



## Oil Cylinder Enlarged Cylinder Excavator Tunnel Arm For Cat Hitachi Komatsu

Our Product Introduction

for more products please visit us on [excavatorlongarm.com](http://excavatorlongarm.com)

### Basic Information

- Place of Origin: China, Guangdong
- Brand Name: Kaiping Zhonghe Machinery Manufacturing Co. Ltd
- Certification: CE, patent, ISO
- Model Number: SDB0019
- Minimum Order Quantity: 1 set / piece
- Price: USD 153.00-USD5499.00
- Packaging Details: bubble or wooden case / others
- Delivery Time: 6-30/working days
- Payment Terms: T/T, L/C or others as you request
- Supply Ability: 4 sets per week

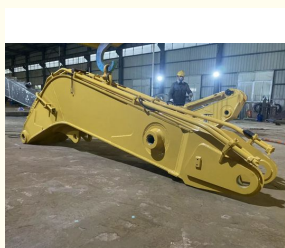


### Product Specification

- Features: Longer Life-span, High Effective, Heavy Duty
- Apply To: 6ton--50 Ton
- Cylinders: Enlarged Cylinders
- After-sales Service: Available, 24 Hour Available
- Warranty: 6 Months For Arm And Boom, Cylinders, 3 Months For Buckets
- Plate Thickness: Thickened
- Material: Shaogang Q355B
- Suitable Working Condition: Digging Tunnels, House Foundation
- Highlight: Cat Excavator Tunnel Arm,  
Hitachi Excavator Tunnel Arm,  
Komatsu Excavator Tunnel Arm



### More Images



## Product Description

### Excavator Shorten Heavy Duty Rock Boom and Arm's Enlarged Cylinder Can Bear Huge Stress

Kaiping Zhonghe Machinery's excavator short heavy-duty rock boom and arm are known for their remarkable versatility and strength. Designed specifically for demanding tasks, Kaiping Zhonghe Machinery's excavator shorten boom and arm excels in applications such as tunneling and house foundation work. Excavator tunnel arm / shorten arm's robust construction allows it to handle a variety of challenging materials, making it an essential tool for construction professionals who require reliability and efficiency in their projects.

One of the standout features of the excavator tunnel arm boom is its enlarged cylinder, which is engineered to withstand significant stress. Customizable excavator tunnel arm's enhancement not only increases the overall lifting capacity but also improves operational performance in tough conditions. The combination of heavy-duty materials and innovative design ensures that this equipment can tackle even the most rigorous excavation tasks, providing operators with the confidence they need to complete their jobs effectively and safely.

Welcome to send your excavator model to Aria for double check: Whatsapp [+86 13822325403](https://wa.me/8613822325403)

Some specs of one set of excavator shorten heavy duty rock boom and arm:

| Excavator Model ( ton) | Plate Thickness (mm) | Weight (kgs)    |
|------------------------|----------------------|-----------------|
| 6-8 ton                | 10mm                 | 590kgs 380kgs   |
| 10-15 ton              | 14mm                 | 1130kgs 900kgs  |
| 20-24 ton              | 16mm                 | 1300kgs 1050kgs |
| 30-36 ton              | 25mm                 | 2900kgs 2600kgs |
| 45-50 ton              | 30mm                 | 3200kgs 3000kgs |









## Product Details



**Point 1**  
Multi-layer welding



**Point 2**  
Double plate reinforcement  
in the stress position



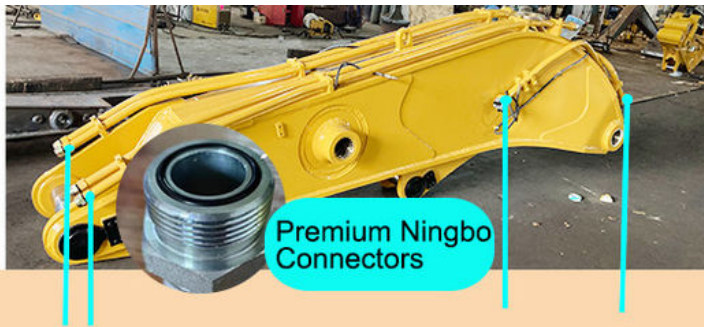
**Point 3**  
Compact design suitable for  
working conditions



**Point 4**  
Precision steel pipe

W / A: 0086 13822325403





Multi-layer welding of pipe connectors to reduce the risk of oil leakage



Three-layer four-pass welding process, stronger welding



Beveling Machine  
Every board will be beveled before being welded which enhances the weld bead

Panel is cut by CNC  
plasma machine with  
less deformation



Large floor-standing  
double-sided boring  
machine  
Higher accuracy

Feedback of shorten heavy duty excavator rock boom and arm from clients:



# Feedback from Clients



from Shonn:  
very good tunnel boom.  
equip my breaker perfect



from Tonny:  
the boom is strong.  
excellent performance



from Mike:  
safe and high-effective  
very nice



from Tommy:  
the boom works very  
good. strong

WIA: +86 13822325403



Established in 2018, Kaiping Zhonghe Machinery is a combination of manufacturing and trading. Our products, including excavator long reach booms, demolition arms, 2-3 sections telescopic arms, tunnel arms, standard/rock buckets, grapples, and rippers, have been selling well in more than 40 countries and areas.

We are located in Guangdong Province, China. A 18000 m<sup>2</sup> 50 welding workers with over 7 years experience, 30 senior designers, and a high-tech R&D team (10+ years on customization, 100+ technical patents), strict production system (6+ years quality control and cost control) and warm-hearted service team. Our annual output of various types of excavator boom arms can reach up to 600 sets.

We strive to uphold our core principles of "Merit Quality, Sincerity Management, and Customer Satisfaction".



Sales Manager

### Manufacturer of Excavator Arm and Boom

Whatsapp: +86 13822325403

Email: [aria@excavatorboomarm.com](mailto:aria@excavatorboomarm.com)  
13822325403@163.com

Web: [www.excavatorlongarm.com](http://www.excavatorlongarm.com)



Welcome to contact for a big discount!

Whatsapp: [+86 13822325403](https://wa.me/8613822325403)

Email: [aria@excavatorboomarm.com](mailto:aria@excavatorboomarm.com)  
13822325403@163.com



Jiangmen Kaiping Zhonghe Machinery Manufacturing Co., Ltd



+86 13822325403



[aria@excavatorboomarm.com](mailto:aria@excavatorboomarm.com)



[excavatorlongarm.com](http://excavatorlongarm.com)

9 Huancui West Road, Cuishanhu New Area, Kaiping City, Guangdong Province, China



