



Ex60 Zx135 Zx200 Pc240 Excavator Tunnel Arm Use Q355B Material

Our Product Introduction

for more products please visit us on excavatorlongarm.com

Basic Information

- Place of Origin: China, Guangdong Province
- Brand Name: Kaiping Zhonghe Machinery Manufacturing Co. Ltd
- Certification: CE, patent, ISO
- Model Number: SDB0018
- Minimum Order Quantity: 1 set / piece
- Price: USD 183.00-USD4999.00
- Packaging Details: bubble or wooden case / others
- Delivery Time: 6-30/works
- Payment Terms: T/T, L/C or others as you request
- Supply Ability: 12 sets per week



Product Specification

- Cylinders: Enlarged Cylinders, Famous Brand's Cylinder
- Plate Thickness: Thickened
- After-sales Service: Available
- Warranty: 6 Months For The Boom And Arm And The Cylinders, 3 Months For The Bucket
- Quality: Premium
- Suitable Working Condition: Digging House Foundation, Tunnel Etc
- Material: Shaogang Q355B, Strengthen Steel
- Apply To: 6 Ton--50ton
- Highlight: **Q355B Excavator Tunnel Arm, zx135 Excavator Tunnel Arm, pc240 Excavator Tunnel Arm**



More Images



Product Description

Shortened Boom and Arm for Heavy-Duty Excavators

Kaiping Zhonghe Machinery offers a specialized shortened boom and arm for heavy-duty excavators, specifically designed for challenging tasks such as digging through tough sand and soil in confined areas like basements and tunnels. Excavator tunnel arm for sale's configuration enhances maneuverability, making it ideal for projects with limited space, while maintaining the power needed for heavy-duty operations.

The excavator shorten heavy duty rock boom and arm features a more compact design compared to standard options, allowing for the use of larger buckets and breakers. Both the boom and arm are reinforced for added strength, and the oil cylinders have been enlarged to boost the excavator's overall power and efficiency. A complete set pf excavator tunnel boom includes a large boom, a small arm, a stick cylinder, a bucket cylinder, six pins, a breaker pipeline set, high-pressure hoses, two valves, and various additional accessories, ensuring that operators have everything they need for optimal performance.

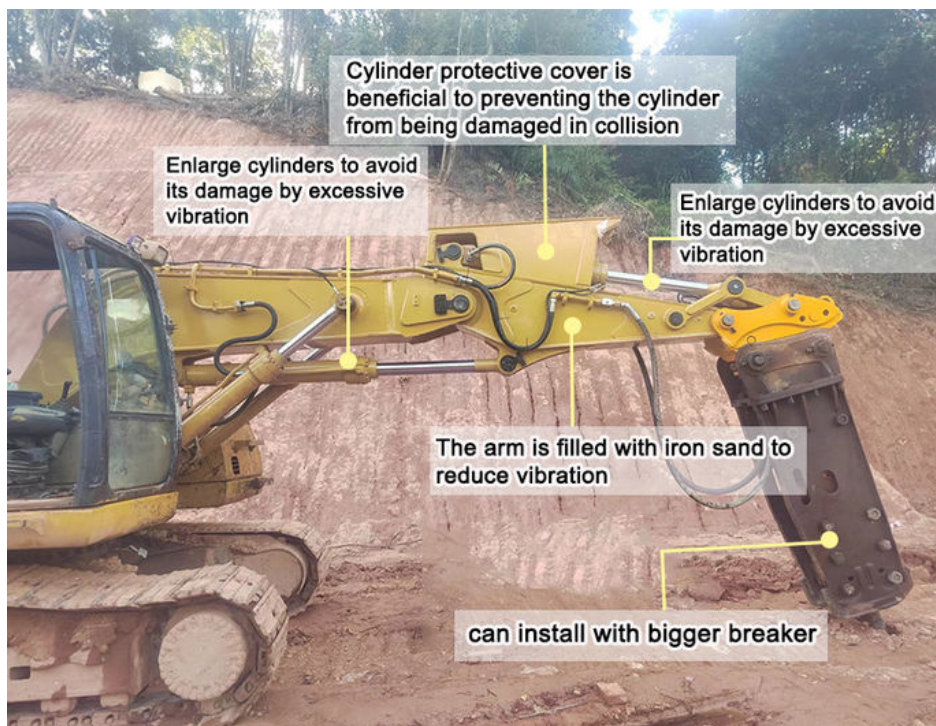
Welcome to send your excavator model to us for double check, model drawing will be sent soon.

Whatsapp: [+86 13822325403](https://wa.me/8613822325403)

Excavator Model (ton)	Plate Thickness (mm)	Weight (kgs)
6-8 ton	10mm	590kgs 380kgs
10-15 ton	14mm	1130kgs 900kgs
20-24 ton	16mm	1300kgs 1050kgs
30-36 ton	25mm	2900kgs 2600kgs
45-50 ton	30mm	3200kgs 3000kgs



Detail introduction of tunnel arm and boom for excavator:



Tunnel boom

- Meets the needs for powerful machines on rock breaker projects in confined tunnels
- A true customised reliable performer, with robust cylinder guard,,capable of break rock more effective, and with significantly smaller footprint.

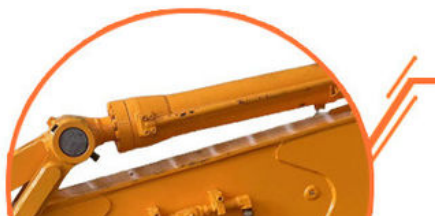


High effectiveness

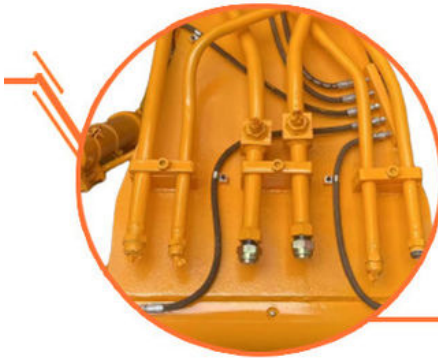
1. On the same machine, tunnel arm can obtain greater lifting capacity than standard arm.
2. Opening angle between boom and arm can reach 180 degrees

Robust structure

1. The upper and lower cover plates are thicker.
2. The arm is filled with iron sand to



- reduce vibration
3. Robust cylinder guard

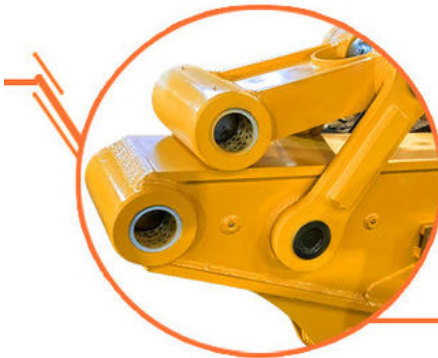
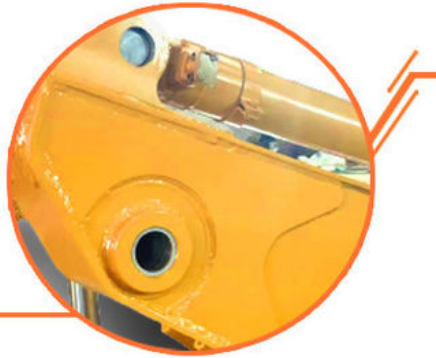


Avoid oil leakage

1. Stop valves prevent oil leakage when replacing breaker by bucket.
2. Multi-layer welding for pipe connectors

Long service life

1. Cylinder protective cover design
2. Q355B material, high-quality accessories, full weld, reinforced stress position, etc.



Pivot end

HD Boom with pivot end reinforcement Single piece design & thicker steel plates



Beveling Machine
Every board will be beveled before being welded which enhances the weld bead

Panel is cut by CNC
plasma machine with
less deformation



Large floor-standing
double-sided boring
machine
Higher accuracy

Feedback from Clients



from Shonn:
very good tunnel boom.
equip my breaker perfect



from Tonny:
the boom is strong.
excellent performance



from Mike:
safe and high-effective
very nice



from Tommy:
the boom works very
good. strong

[More about Factory Show:](#)



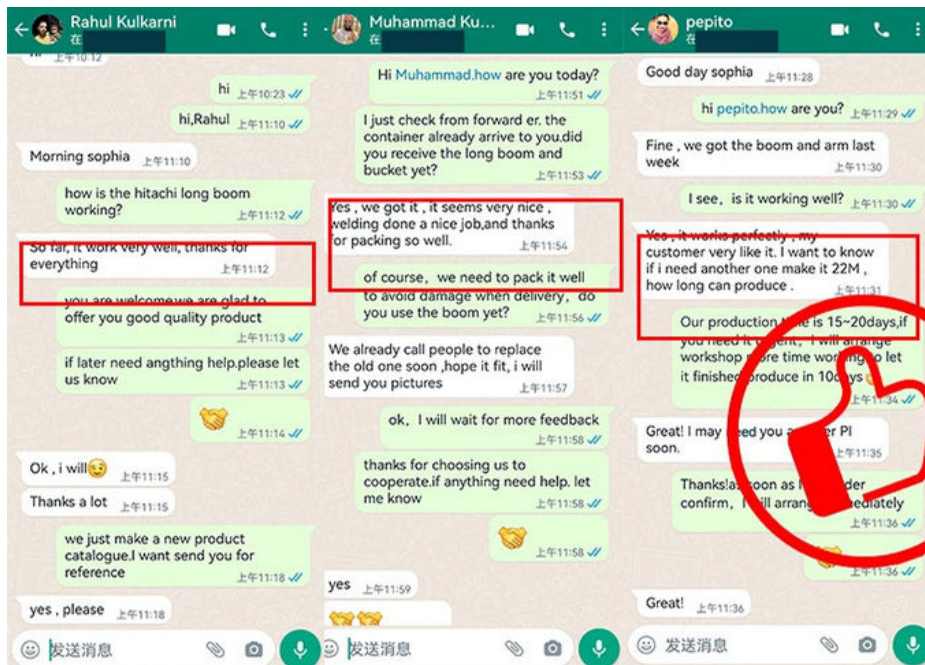
Established in 2018, Kaiping Zhonghe Machinery is a combination of manufacturing and trading. Our products, including excavator long reach booms, demolition arms, 2-3 sections telescopic arms, tunnel arms, standard/rock buckets, grapples, and rippers, have been selling well in more than 40 countries and areas.

We are located in Guangdong Province, China. A 18000 m² 50 welding workers with over 7 years experience, 30 senior designers, and a high-tech R&D team (10+ years on customization, 100+ technical patents), strict production system (6+ years quality control and cost control) and warm-hearted service team. Our annual output of various types of excavator boom arms can reach up to 600 sets.

We strive to uphold our core principles of "Merit Quality, Sincerity Management, and Customer Satisfaction".



- ☒ 24 Hour available
- ☒ Professional
- ☒ Easy Going and Patience
- ☒ Whatsapp: +86 13822325403





Manufacturer of Excavator Arm and Boom

Whatsapp: +86 13822325403

Email: aria@excavatorboomarm.com
13822325403@163.com

Web: www.excavatorlongarm.com






Welcome to contact for a big discount!

Whatsapp: +86 13822325403

Email: aria@excavatorboomarm.com

13822325403@163.com



Jiangmen Kaiping Zhonghe Machinery Manufacturing Co., Ltd



+86 13822325403



aria@excavatorboomarm.com



excavatorlongarm.com

9 Huancui West Road, Cuishanhu New Area, Kaiping City, Guangdong Province, China