



10M Excavator Telescopic Arm Better Welding For Kobelco Hitachi Cat

Our Product Introduction

for more products please visit us on excavatorlongarm.com

Basic Information

- Place of Origin: Kaiping City, Jiangmen City, Guangdong Province, China
- Brand Name: Zhonghe Machinery
- Certification: CE, patent, ISO
- Model Number: TB008
- Minimum Order Quantity: 1 set / piece
- Price: USD 139.00-USD8999.00
- Packaging Details: bubble / wooden cases
- Delivery Time: 7 working days
- Payment Terms: T/T, L/C
- Supply Ability: 8 sets per week

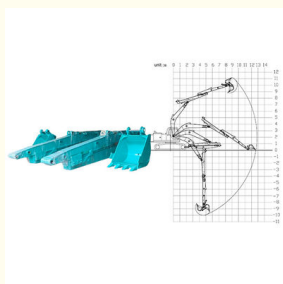


Product Specification

- Digging Depth: 6M 8M 12M
- Steel Material: Q355B
- Cylinders: Included
- Welding: Better Welding
- Test: Full Tests
- Warranty: 6 Months
- Highlight: Kobelco Excavator Telescopic Arm, Hitachi Excavator Telescopic Arm, 10M Cat Excavator Telescopic Arm



More Images



Product Description

The Slider of Excavator Telescopic arm Enhanced Strengthened Telescopic

Excavator telescopic arms are revolutionizing construction sites by providing a safe and highly effective solution for a variety of tasks. Their extended reach allows operators to access difficult-to-reach areas, minimizing the need for manual labor and increasing overall efficiency. This enhanced reach capability translates to faster project completion times and reduced operational costs, making telescopic arms an invaluable asset for modern construction projects.

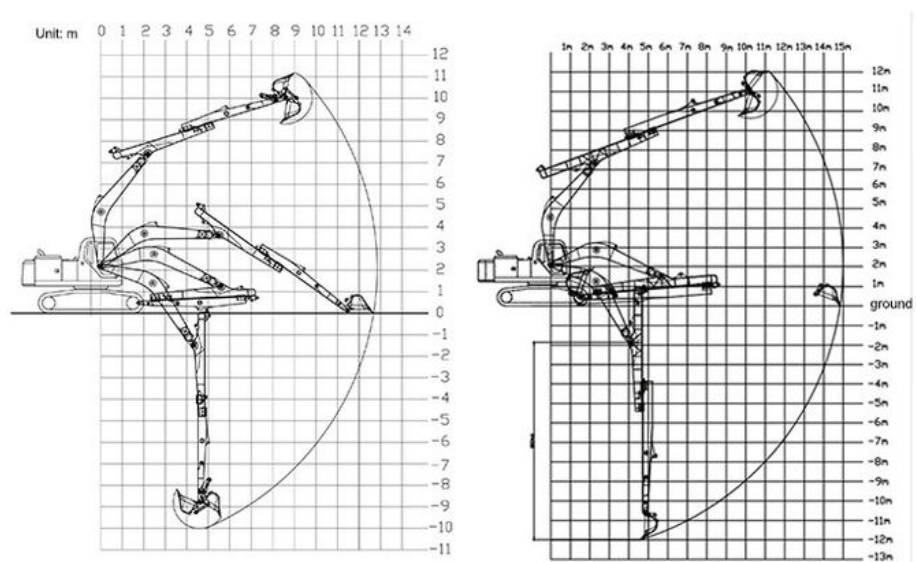
Kaiping Zhonghe Machinery's sliding arms stand out in the market due to their enhanced and strengthened sliders. This critical design improvement ensures superior stability and durability, even under heavy loads and demanding working conditions. By reinforcing the sliders, Kaiping Zhonghe Machinery has created a telescopic arm that offers unparalleled reliability and longevity, providing construction professionals with the confidence to tackle even the most challenging projects.

Excavator Model(ton)	Bucket Capacity(cbm)	Maximum Digging Depth(m)
3-4T	0.1	4
6-8T	0.2	6
10-12T	0.35	8
20-27T	0.5-0.6	10
20-27T	0.45	12
30-36T	1.2	10
30-36T	1	12
30-36T	0.6	12



Cut from one plate
 ✓ stronger
 ✓ avoid deformation

Welded together
 ✗ easy to crack







Sales Manager

Manufacturer of Excavator Arm and Boom

Whatsapp: +86 13822325403

Email: aria@excavatorboomarm.com
13822325403@163.com

Web: www.excavatorlongarm.com



Welcome to contact for a big discount!

Whatsapp: wa.me/+8613822325403

Email: aria@excavatorboomarm.com

13822325403@163.com

Website link: www.excavatorlongarm.com



Jiangmen Kaiping Zhonghe Machinery Manufacturing Co., Ltd



+86 13822325403



aria@excavatorboomarm.com



excavatorlongarm.com

9 Huancui West Road, Cuishanhu New Area, Kaiping City, Guangdong Province, China