

Better Welding Material Excavator Long Arm Shaogang Q355B High Effective

Our Product Introduction

for more products please visit us on excavatorlongarm.com

Basic Information

- Place of Origin: China, Guangdong
- Brand Name: Kaiping Zhonghe Machinery
- Certification: CE, patent, ISO
- Model Number: LRB012
- Minimum Order Quantity: 1 set / piece
- Price: USD 190.00-USD7600.00
- Packaging Details: bubble / wooden cases
- Delivery Time: 7-20/works
- Payment Terms: T/T, L/C
- Supply Ability: 6 sets per week



Product Specification

- Material: Shaogang Q355B, Q690D Or Others As You Request
- Condition: New, Brand New
- Warranty: 6 Months
- Bucket: Available
- Suitable Excavator: 6 Ton - 50ton
- Bucket Cylinder: Included
- Highlight: **Q355B Excavator Long Arm,
Shaogang Excavator Long Arm,
High Effective Excavator Long Arm**



More Images



Product Description

Excavator Long Reach Arm with Stone Grapple for River Applications

Overview of the Long Boom Arm for Sale:

In construction operations, a long reach boom excavator is highly effective for excavation tasks. Its extended arm provides access to larger areas compared to standard boom arms, reducing the frequency of machine repositioning. This adaptable long boom arm is compatible with various excavator brands and excels at excavating materials such as sand, soil, silt, and gravel. Long reach excavators are frequently utilized for river cleaning, dredging, and cargo unloading at docks. Reinforcements in critical stress areas ensure efficient operation while minimizing maintenance downtime. The long arm excavator designed for Komatsu is constructed from Shaogang Q355B steel, recognized for its superior welding characteristics and crack resistance.

Key Features of the Excavator Long Arm:

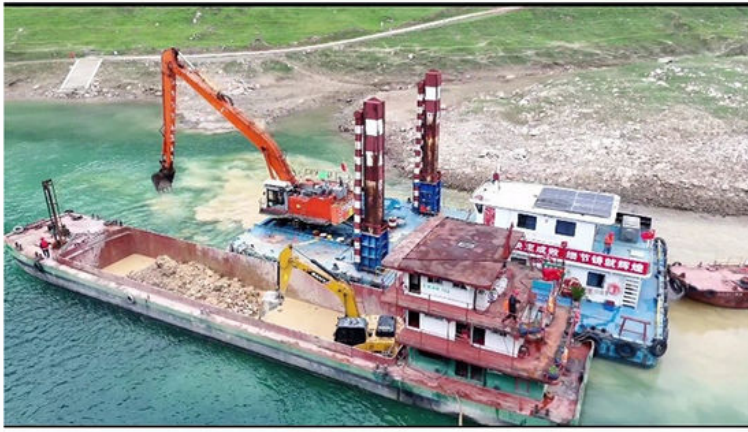
High-Quality Materials: Available in Shaogang Q355B, Q690D, or other specified materials.

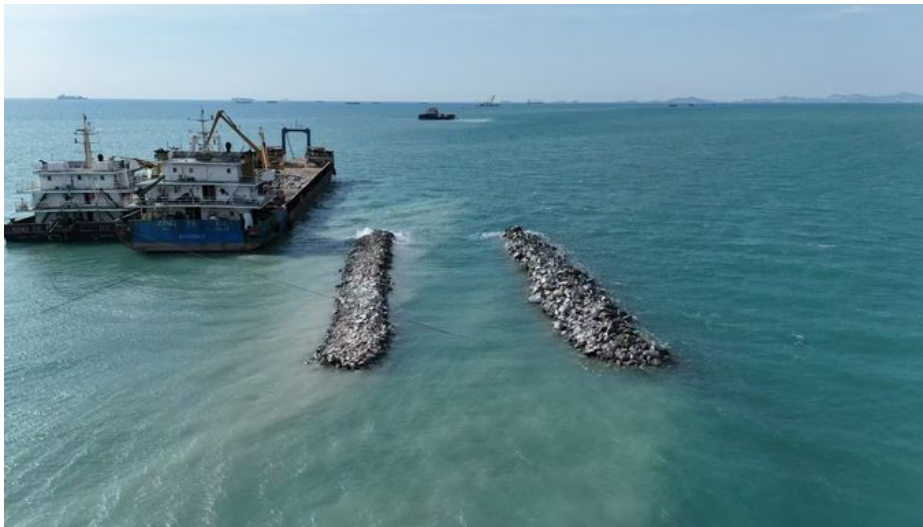
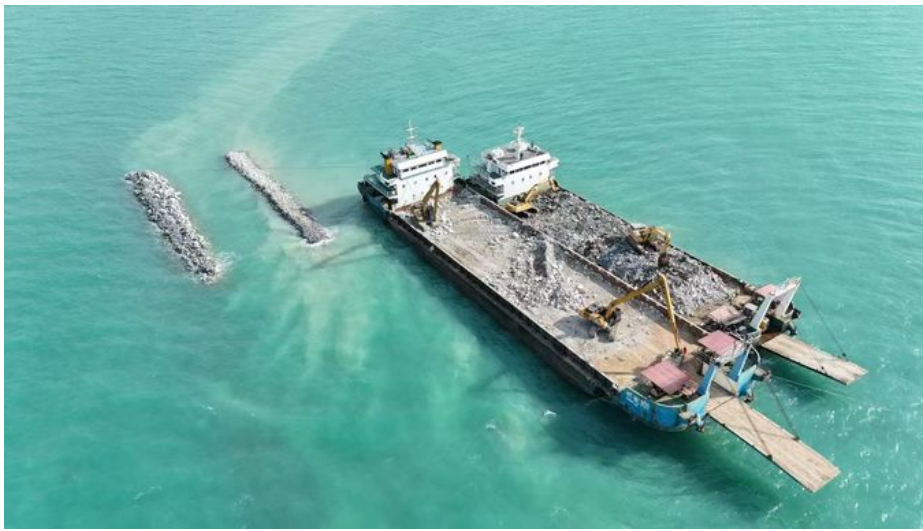
Versatile Applications: Ideal for dredging and excavating sand, soil, silt, and more.

Thoughtful Design: Each long excavator boom is comprehensively designed, considering every detail.

Rigorous Testing: Comprehensive testing is conducted prior to delivery to clients.







Excavator Model(m)	Counterweight (ton)	Bucket capacity (cbm)		Length(m)
		Bucket cylinder	Arm(m)	
30-36T	0	0.6	11	19-20
		20T	9	
37-39T	0	0.6	11	
		20T	9	
40-47T	0	1	11	21-22
		25T	9	
25-28T	3.5T	0.4	12	
		12T	10	
30-33T	2.5T	0.4	12	
		12T	10	
35-39T	1.5T	0.6	12	
		20T	10	
40-47T	0	0.8	12	23-24
		20T	10	
30-35T	3.5T	0.4	13	
		12T	11	
35-39T	2T	0.4	13	
		12T	11	
40-47T	0	0.6	13	
		20T	11	



1. Three layers with four passes welding
2. Two layers three passes



1. Seamless precision steel
2. Adopt high quality Ningbo connectors



The middle sleeve of the boom adopts an integral forming process
Reinforced 45# steel for boom middle sleeve



1. Pin holes are boring after welding
2. The ear seat is built with reinforced vertical bar plates



1. Strengthen the inner part of the box and the boom seat sleeve with inclined tendons
2. Graphite alloy copper sleeve



Steel sleeve

Graphite alloy copper sleeve

W/A: 0086 13822325403





Welcome to contact for a big discount!

Whatsapp: [+8613822325403](https://wa.me/8613822325403)

Email: aria@excavatorboomarm.com
13822325403@163.com



Jiangmen Kaiping Zhonghe Machinery Manufacturing Co., Ltd



+86 13822325403



aria@excavatorboomarm.com



excavatorlongarm.com

9 Huancui West Road, Cuishanhu New Area, Kaiping City, Guangdong Province, China