



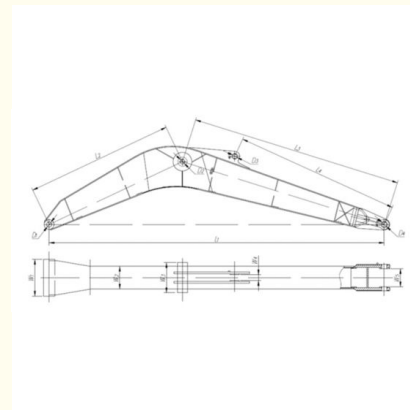
Steel Plate Excavator Long Boom Arm For 3 Ton 50 Ton Excavators

Our Product Introduction

for more products please visit us on excavatorlongarm.com

Basic Information

- Place of Origin: China, Guangdong Province
- Brand Name: Kaiping Zhonghe Machinery Manufacturing Co. Ltd
- Certification: CE, patent, ISO
- Model Number: LRB012
- Minimum Order Quantity: 1 set / piece
- Price: USD 178.00-USD11600.00
- Packaging Details: bubble / wooden cases
- Delivery Time: 7-20/works
- Payment Terms: T/T, L/C
- Supply Ability: 7 sets per week



Product Specification

- Condition: New, Brand New
- Suitable Excavator: 3 Ton - 50ton
- Warranty: 6 Months, 3 Months
- Material: Shaogang Q355B, Q690D
- Bucket: Available
- Bucket Cylinder: Included
- Highlight: 3 ton Excavator Long Boom Arm ,
Steel Plate Excavator Long Boom Arm,
50 ton Excavator Long Boom Arm



More Images



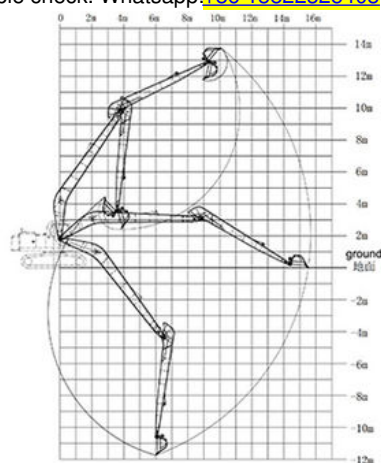
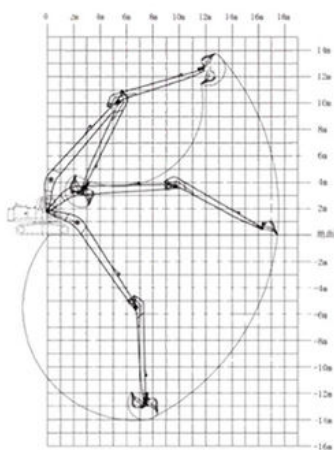
Product Description

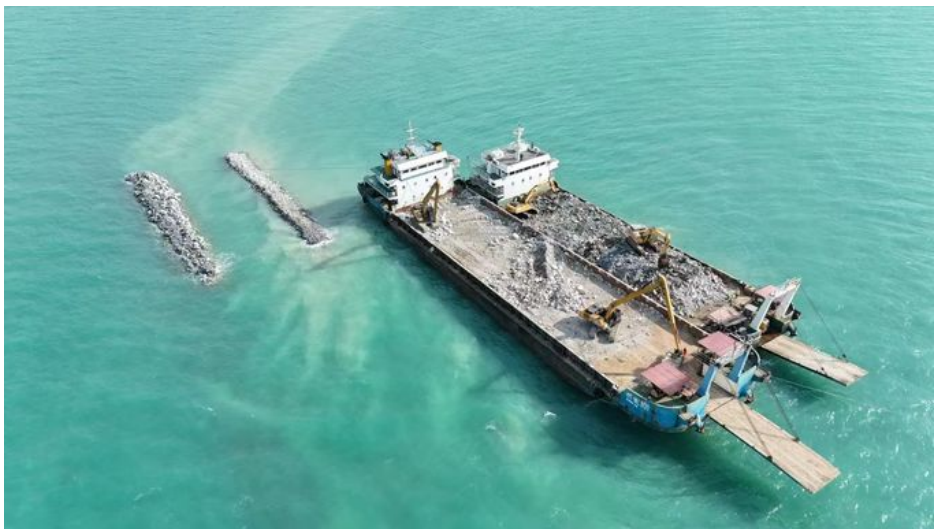
Use Shaogang Q355B Long Reach Boom Excavator for River for Dredging High Strength

Kaiping Zhonghe Machinery's long reach boom excavator is transforming dredging operations through its remarkable adaptability and outstanding efficiency. Engineered to handle various excavation challenges, this state-of-the-art equipment enables operators to access hard-to-reach areas effortlessly, greatly improving productivity. Built with robust materials, the long reach boom guarantees an extended service life, making it a dependable option for contractors aiming to enhance their dredging endeavors. With its blend of high performance and durability, Zhonghe's long reach boom excavator stands as a crucial tool in both the construction and dredging sectors.

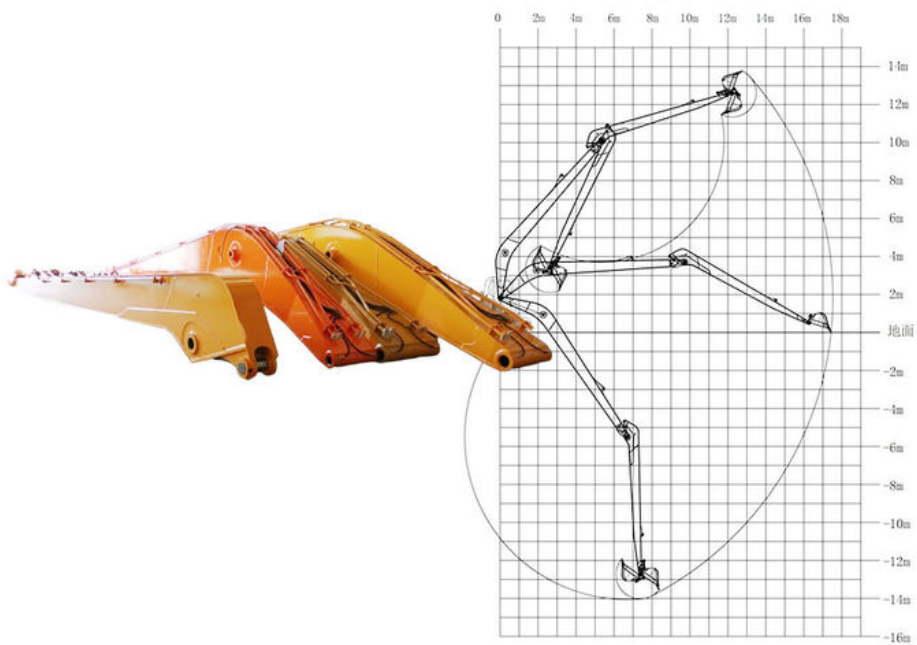
Excavator Model(m)	Counterweight (ton)	Bucket capacity (cbm)		Length(m)
		Bucket cylinder	Arm(m)	
30-36T	0	0.6	11	19-20
		20T	9	
37-39T	0	0.6	11	
		20T	9	
40-47T	0	1	11	21-22
		25T	9	
25-28T	3.5T	0.4	12	
		12T	10	
30-33T	2.5T	0.4	12	
		12T	10	
35-39T	1.5T	0.6	12	
		20T	10	
40-47T	0	0.8	12	
		20T	10	
30-35T	3.5T	0.4	13	23-24
		12T	11	
35-39T	2T	0.4	13	
		12T	11	
40-47T	0	0.6	13	
		20T	11	

Welcome to send your excavator model to us for double check. Whatsapp: [+86 13822325403](https://wa.me/8613822325403)





18m Long Reach Arm





1. Three layers with four passes welding
2. Two layers three passes



1. Seamless precision steel
2. Adopt high quality Ningbo connectors



The middle sleeve of the boom adopts an integral forming process
Reinforced 45# steel for boom middle sleeve



1. Pin holes are boring after welding
2. The ear seat is built with reinforced vertical bar plates



1. Strengthen the inner part of the box and the boom seat sleeve with inclined tendons
2. Graphite alloy copper sleeve



Steel sleeve

Graphite alloy copper sleeve

W/A: 0086 13822325403



Welcome to contact for a big discount!

Whatsapp: [+8613822325403](https://wa.me/8613822325403)

Email: aria@excavatorboomarm.com
13822325403@163.com



Jiangmen Kaiping Zhonghe Machinery Manufacturing Co., Ltd



+86 13822325403



aria@excavatorboomarm.com



excavatorlongarm.com

9 Huancui West Road, Cuishanhu New Area, Kaiping City, Guangdong Province, China