



Dredging Work Excavator Long Arm Use Q355B Material For River

Our Product Introduction

for more products please visit us on excavatorlongarm.com

Basic Information

- Place of Origin: China, Guangdong Province
- Brand Name: Kaiping Zhonghe Machinery
- Certification: CE, patent, ISO
- Model Number: LRB015
- Minimum Order Quantity: 1 set / piece
- Price: USD 175.00-USD10600.00
- Packaging Details: bubble / wooden cases / or others as you request
- Delivery Time: 7-20/works
- Payment Terms: T/T, L/C
- Supply Ability: 8 sets per week

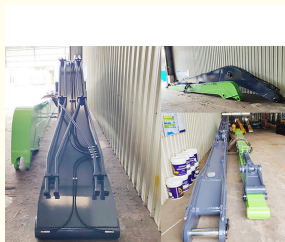


Product Specification

- Bucket Cylinder: Included
- Condition: New, Brand New
- Material: Shaogang Q355B, Q690D
- Bucket: Available 1.2cbm
- Suitable Excavator: 3 Ton - 120ton
- Warranty: 6 Months
- Highlight: River Excavator Long Arm,
Q355B Excavator Long Arm,
Dredging Work Excavator Long Arm



More Images

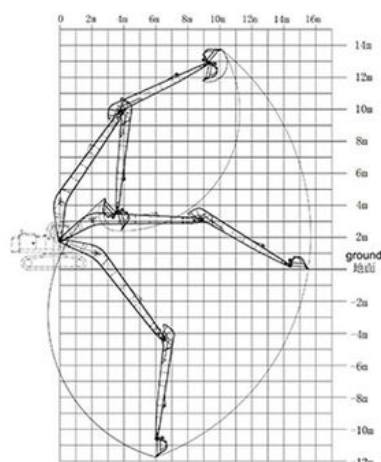
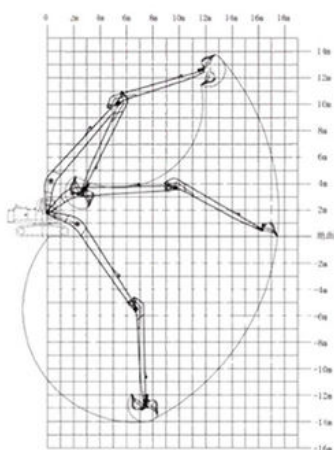
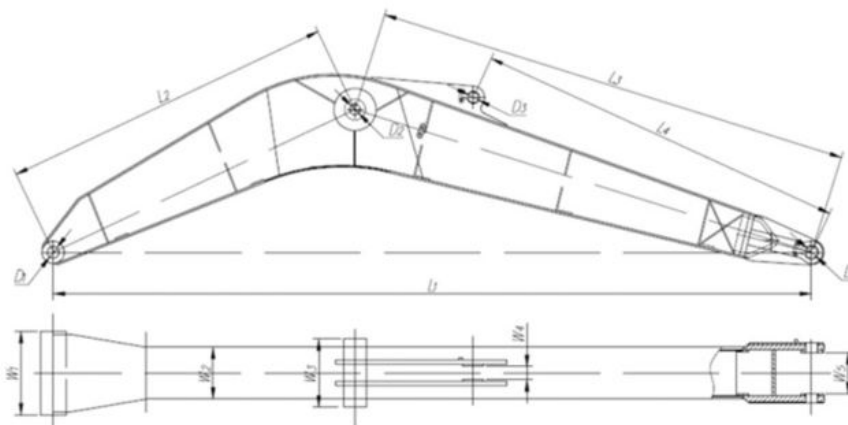


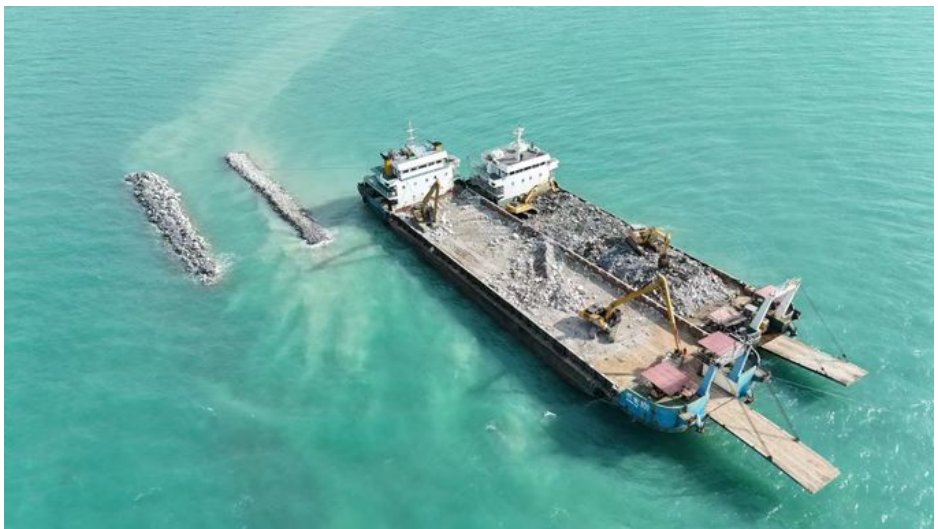
Long Reach Boom Excavator Long Boom Arm for Sale for Hitachi Komatsu Use Q60D

Introduction of long reach boom excavator used for dredging:

Kaiping Zhonghe Machinery's long reach boom excavator is revolutionizing dredging operations with its exceptional versatility and high efficiency. Designed to tackle a wide range of excavation tasks, this innovative equipment allows operators to reach difficult areas with ease, significantly enhancing productivity. Constructed from durable materials, the long reach boom ensures a longer service lifespan, making it a reliable choice for contractors seeking to optimize their dredging projects. With its combination of performance and durability, Zhonghe's long reach boom excavator is an invaluable asset in the construction and dredging industries.

Excavator Model(m)	Counterweight (ton)	Bucket capacity (cbm)		Length(m)
		Bucket cylinder	Arm(m)	
30-36T	0	0.6	11	19-20
		20T	9	
37-39T	0	0.6	11	
		20T	9	
40-47T	0	1	11	21-22
		25T	9	
25-28T	3.5T	0.4	12	
		12T	10	
30-33T	2.5T	0.4	12	
		12T	10	
35-39T	1.5T	0.6	12	
		20T	10	
40-47T	0	0.8	12	23-24
		20T	10	
30-35T	3.5T	0.4	13	
		12T	11	
35-39T	2T	0.4	13	
		12T	11	
40-47T	0	0.6	13	
		20T	11	







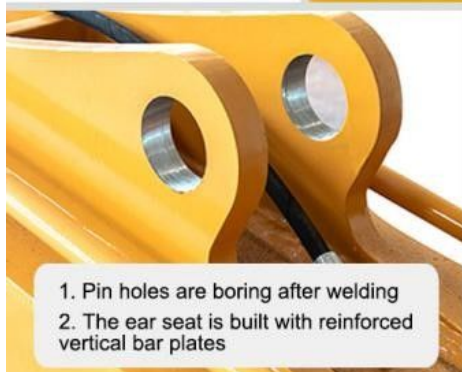
1. Three layers with four passes welding
2. Two layers three passes



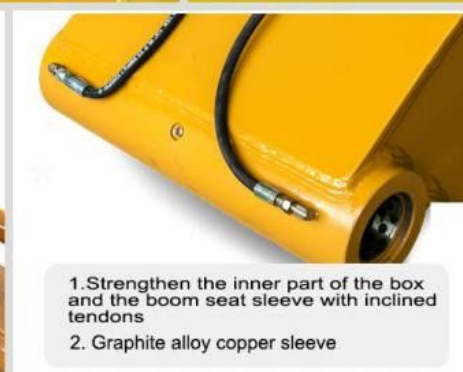
1. Seamless precision steel
2. Adopt high quality Ningbo connectors



The middle sleeve of the boom adopts an integral forming process
Reinforced 45# steel for boom middle sleeve



1. Pin holes are boring after welding
2. The ear seat is built with reinforced vertical bar plates



1. Strengthen the inner part of the box and the boom seat sleeve with inclined tendons
2. Graphite alloy copper sleeve



Steel sleeve

Graphite alloy copper sleeve

W/A: 0086 13822325403





Welcome to contact for a big discount!

Whatsapp: [+8613822325403](https://wa.me/8613822325403)

Email: aria@excavatorboomarm.com
13822325403@163.com



Jiangmen Kaiping Zhonghe Machinery Manufacturing Co., Ltd



+86 13822325403



aria@excavatorboomarm.com



excavatorlongarm.com

9 Huancui West Road, Cuishanhu New Area, Kaiping City, Guangdong Province, China