



Long Reach Boom Excavator For Dredging Work Use Q355B Material

Our Product Introduction

for more products please visit us on excavatorlongarm.com

Basic Information

- Place of Origin: China, Guangdong Province
- Brand Name: Kaiping Zhonghe Machinery
- Certification: CE, patent, ISO
- Model Number: LRB011
- Minimum Order Quantity: 1 set / piece
- Price: USD 197.00-USD9600.00
- Packaging Details: bubble / wooden cases
- Delivery Time: 7-20/works
- Payment Terms: T/T, L/C
- Supply Ability: 6 sets per week

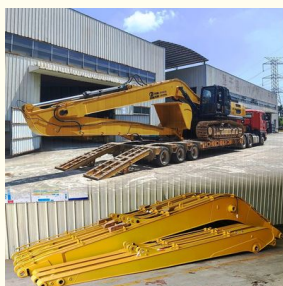


Product Specification

- Suitable Excavator: 6 Ton - 120ton
- Bucket Cylinder: Included
- Condition: New, Brand New
- Quality: Full Guaranteed
- Bucket: Included
- Warranty: 6 Months
- Material: Shaogang Q355B, Q690D Or Others As You Request
- After-sale Service: Available
- Highlight: Long Reach Boom Excavator, Dredging Work Long Reach Boom, Q355B Long Reach Boom



More Images



Product Description

35M Excavator Long Reach Arm for Dredging Work High Effectively Use Q355B Material

Brief introduction of long reach boom excavator:

In construction projects, a long reach boom excavator offers remarkable efficiency for excavation tasks. Excavator long arm's extended arm enables access to larger areas than a standard boom, minimizing the need for frequent repositioning of the machine. This adaptable long boom arm is compatible with various excavator brands and excels in handling materials such as sand, soil, silt, and gravel. Common applications include river cleaning, dredging, and unloading cargo at jetties. Reinforcements in high-stress areas ensure that the long boom excavator operates effectively while reducing maintenance downtime. The model designed for Komatsu is constructed from Shaogang Q355B steel, recognized for its superior welding properties and resistance to cracking.

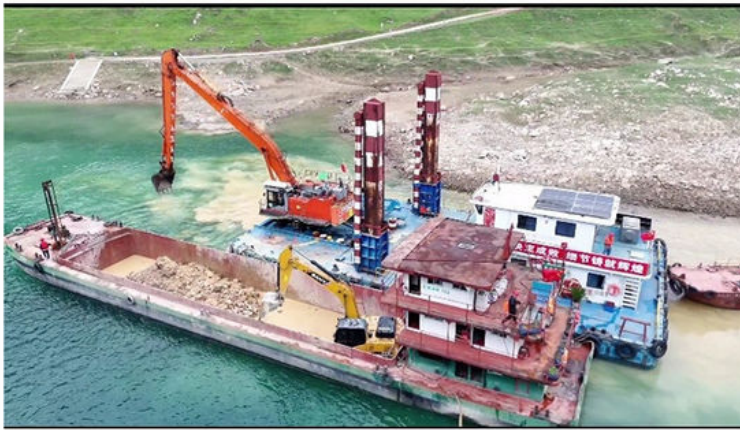
Quick Overview of Excavator Long Arm:

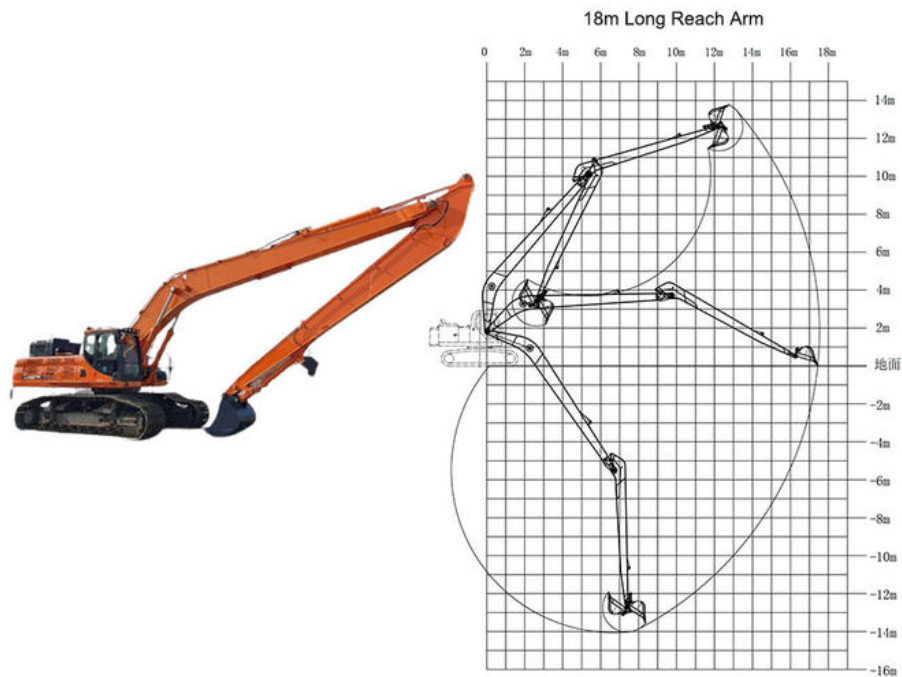
Premium Materials: Available in Shaogang Q355B, Q690D, or other specified options.

Ideal Uses: Perfect for dredging and excavating materials like sand, soil, silt, and more.

Professional Design: Each long excavator boom is comprehensively designed, with every step carefully considered.

Thorough Testing: Extensive testing is conducted before delivery to ensure quality for clients.





Excavator Model(m)	Counterweight (ton)	Bucket capacity (cbm)		Length(m)
		Bucket cylinder	Boom(m) Arm(m)	
30-36T	0	0.6	11	19-20
		20T	9	
37-39T	0	0.6	11	
		20T	9	
40-47T	0	1	11	21-22
		25T	9	
25-28T	3.5T	0.4	12	
		12T	10	
30-33T	2.5T	0.4	12	
		12T	10	
35-39T	1.5T	0.6	12	
		20T	10	
40-47T	0	0.8	12	
		20T	10	
30-35T	3.5T	0.4	13	23-24
		12T	11	
35-39T	2T	0.4	13	
		12T	11	
40-47T	0	0.6	13	
		20T	11	



1. Three layers with four passes welding
2. Two layers three passes



1. Seamless precision steel
2. Adopt high quality Ningbo connectors



The middle sleeve of the boom adopts an integral forming process
Reinforced 45# steel for boom middle sleeve



1. Pin holes are boring after welding
2. The ear seat is built with reinforced vertical bar plates



1. Strengthen the inner part of the box and the boom seat sleeve with inclined tendons
2. Graphite alloy copper sleeve



Steel sleeve

Graphite alloy copper sleeve

W/A: 0086 13822325403





Welcome to contact for a big discount!

Whatsapp: [+8613822325403](https://wa.me/8613822325403)

Email: aria@excavatorboomarm.com
13822325403@163.com



Jiangmen Kaiping Zhonghe Machinery Manufacturing Co., Ltd



+86 13822325403



aria@excavatorboomarm.com



excavatorlongarm.com

9 Huancui West Road, Cuishanhu New Area, Kaiping City, Guangdong Province, China