



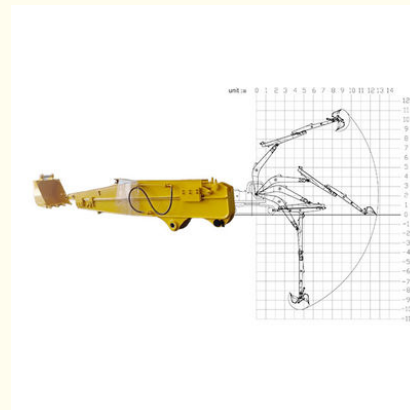
Excavator Sliding Boom Arm For Digging Deeper For Cat Hitachi Komatsu Kato

Our Product Introduction

for more products please visit us on excavatorlongarm.com

Basic Information

- Place of Origin: Guangdong province, China
- Brand Name: Kaiping Zhonghe Machinery
- Certification: CE, patent, ISO
- Model Number: HB0023
- Minimum Order Quantity: 1 set / piece
- Price: USD 137.00-USD4799.00
- Packaging Details: bubble, wooden case
- Delivery Time: 7-35/works
- Payment Terms: T/T, L/C
- Supply Ability: 6 sets per week



Product Specification

- Features: Long Reach, Digging Hard Sand, Easy Transportation
- Material: Shaogang Q355B, Ningbo Connectors
- Bucket Capacity: 0.1 Cbm - 1.2cbm
- Warranty: 6 Months
- Condition: New
- Apply To: 6ton - 50ton
- Suitable Working Conditions: Foundation Pit, Basement, Narrow Places
- Digging Depth: 6m, 8m, 10m, 12m
- Highlight: Cat Excavator Sliding Boom Arm, Hitachi Excavator Sliding Boom Arm, Komatsu Excavator Sliding Boom Arm



More Images



Product Description

Long Reach Arm for Excavator with Standard Bucket Standard Arm

Specifications of Zhonghe Machinery's Long Reach Excavator for Sale:

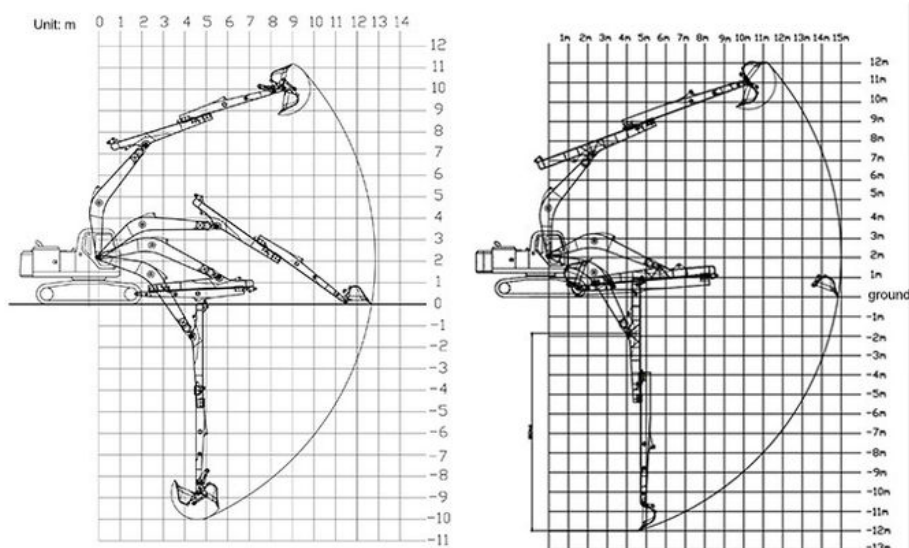
Wide Compatibility: Engineered for excavators weighing between 6 and 50 tons, this arm is suitable for all major brands, including Caterpillar, Hitachi, Komatsu, SANY, and Zoomlion. Welcome to send your excavator model to us for double check.

Key Features of Zhonghe Machinery's sliding boom excavator:

Double-Limit Mechanism: This design minimizes vibration in the long cylinder of the excavator's sliding arm. The minimize vibration can prolong the service life-span of one set of telescopic dipper arm.

Dual Oil Seal System: Enhances the longevity of the telescopic arm while preventing oil leakage from the cylinder. The long cylinder has longer service life-span and not easy leak oil.

Reinforced Slider Construction: Made from a single solid plate, the slider offers superior strength compared to welded versions, resulting in increased reliability and a longer operational life. Kaiping Zhonghe Machinery's telescopic arm is built for exceptional durability.

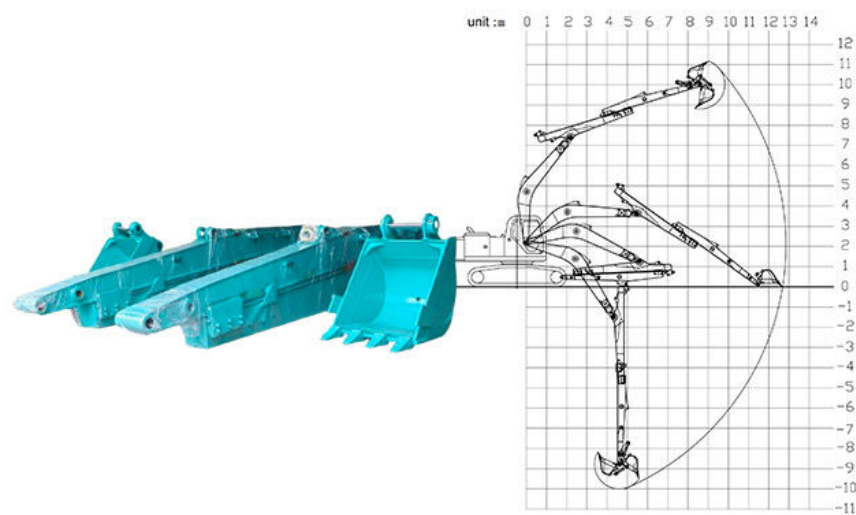


| Excavator model(ton) | bucket capacity (cbm) | Maximum Digging Depth |
|----------------------|-----------------------|-----------------------|
| 3-4 ton | 0.1 cbm | 4m |
| 6-8 ton | 0.2 cbm | 6m |
| 10-12 ton | 0.35cbm | 8m |
| 20-27 ton | 0.5 cbm | 10m |
| 30-36 ton | 0.6 cbm | 12m |

Please send your excavator model to us. Suitable length will be sent according to your excavator model.



More details of our excavator sliding arm / telescopic excavator:





The double limit design of the sliding cylinder prevents cylinder jolting and over-pulling.

Telescopic cylinder double oil seal design extends the service life of the cylinder

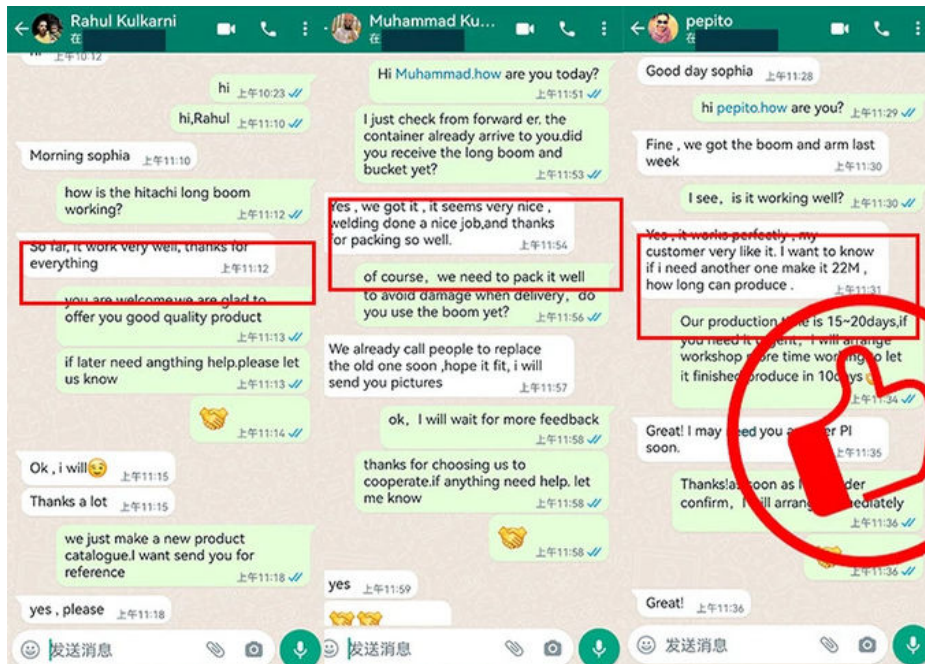


Cover plates are cut from a whole piece but not spliced, to be more firm and not easy to deform.

Built-in wear-resistant plastic slider, Easy to replace and maintain



The tube has leakage holes to reduce water accumulation inside the arm tube, thereby reducing internal corrosion.



Kaiping Zhonghe Machinery is a manufacturer committed to integrity, reliability, and professionalism in every aspect of our operations. With a strong dedication to quality and customer satisfaction, our team of experienced professionals works tirelessly to deliver innovative solutions that meet the highest industry standards. Our honest approach fosters trust with our clients, ensuring transparent communication and a collaborative partnership. By prioritizing excellence and ethical practices, we have established ourselves as a trusted leader in the **manufacturing** sector, consistently exceeding expectations and building long-lasting relationships with our customers.



Established in 2018, Kaiping Zhonghe Machinery is a combination of manufacturing and trading. Our products, including excavator long reach booms, demolition arms, 2-3 sections telescopic arms, tunnel arms, standard/rock buckets, grapples, and rippers, have been selling well in more than 40 countries and areas.

We are located in Guangdong Province, China. A 18000 m² 50 welding workers with over 7 years experience, 30 senior designers, and a high-tech R&D team (10+ years on customization, 100+ technical patents), strict production system (6+ years quality control and cost control) and warm-hearted service team. Our annual output of various types of excavator boom arms can reach up to 600 sets.

We strive to uphold our core principles of "Merit Quality, Sincerity Management, and Customer Satisfaction".

Welcome to contact Aria for a big discount!

Whatsapp: [+86 13822325403](https://wa.me/8613822325403)

Email: aria@excavatorboomarm.com

13822325403@163.com



Jiangmen Kaiping Zhonghe Machinery Manufacturing Co., Ltd



+86 13822325403



aria@excavatorboomarm.com



excavatorlongarm.com

9 Huancui West Road, Cuishanhu New Area, Kaiping City, Guangdong Province, China