



Telescopic Boom Excavator For Digging House Foundation Long Reach Telescopic

Our Product Introduction

for more products please visit us on excavatorlongarm.com

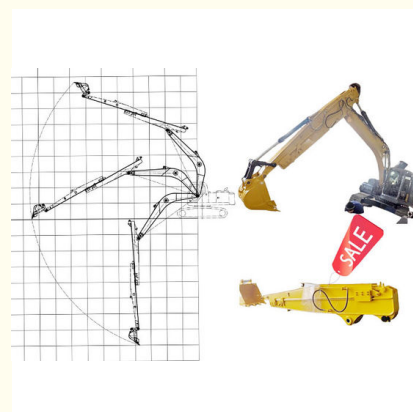
Basic Information

- Place of Origin: Guangdong Province, China
- Brand Name: Kaiping Zhonghe Machinery Manufacturing Co. Ltd
- Certification: CE, patent, ISO
- Model Number: HB007
- Minimum Order Quantity: 1 set / piece
- Price: USD 146.00-USD5499.00
- Packaging Details: bubble, wooden case
- Delivery Time: 5-35/works
- Payment Terms: T/T, L/C
- Supply Ability: 10 sets per week



Product Specification

- Features: Long Reach, High Effective And Longer Life-span
- Warranty: 6 Months For Sliding Arm, 3 Months For Bucket
- Apply To: 20ton - 55ton
- Material: Shaogang Q355B
- Bucket Capacity: 0.1 Cbm - 2cbm
- Condition: New, Brand New, OEM ODM
- Digging Depth: 4m, 8m, 10m, 12m
- Suitable Working Conditions: Foundation Pit, Basement, Narrow Places
- Highlight: House Foundation Telescopic Boom Excavator, Digging House Foundation Telescopic Boom Excavator, Long Reach Telescopic Boom Excavator



More Images



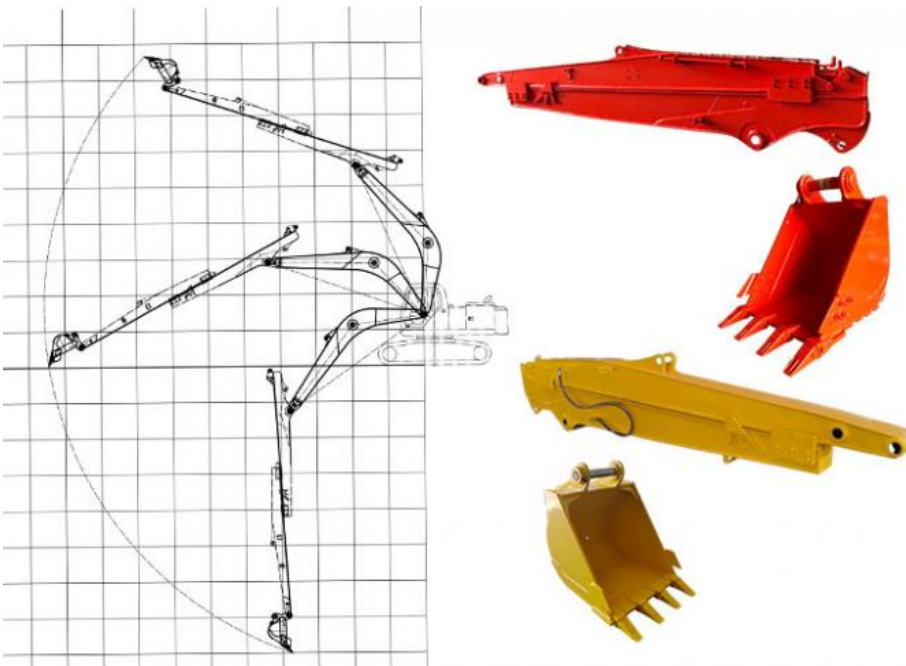
Product Description

Kobelco Excavator Sliding Arm Excavator Telescopic Arm with Bucket Long Reach

The excavator sliding arm is renowned for its exceptional long reach and telescopic capabilities, making it a versatile tool for various excavation tasks. Designed for high efficiency, this innovative arm allows operators to access challenging sites with ease, extending far beyond the limitations of standard excavator arms. Its robust construction and advanced engineering ensure reliable performance, enabling precise digging and lifting in tight spaces or at great depths. Whether used for construction, landscaping, or site preparation, excavator sliding arm enhances productivity and effectiveness in any excavation project.

Key words:

* Telescopic *Long Reach * High Effective *Robust



Excavator model(ton)	bucket capacity (cbm)	Maximum Digging Depth(m)
3-4 ton	0.1 cbm	4m
6-8 ton	0.2 cbm	6m
10-12 ton	0.35cbm	8m
20-27 ton	0.5 cbm	10m
30-36 ton	0.6 cbm	12m



Production Process for a Telescopic Boom Excavator:

Exceptional Precision: Utilizing a large floor-standing double-sided boring machine ensures that machining accuracy is maintained at a minimum of 0.05mm.

Skilled Manufacturing: All workers undergo extensive training to guarantee expertise in their roles.

Comprehensive Quality Control: Each phase of the production process is meticulously monitored to uphold high standards of quality assurance.

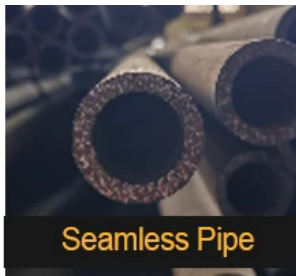


Premium Material which ensure high quality products:

- * High quality steel material: Shaogang Big Brand Steel Material.
- * Connectors: Ningbo Big Brand Connectors
- * Premium Welding Wire: Jinqiao Welding Wires



Certified Steel



Seamless Pipe



40MuCr Pins



Graphite Sleeve

Experienced and Professional Staffs



Any interest, welcome to contact Aria for a big discount!

Whatsapp: [+86 13822325403](https://wa.me/8613822325403)

Email: aria@excavatorboomarm.com
13822325403@163.com



Jiangmen Kaiping Zhonghe Machinery Manufacturing Co., Ltd



+86 13822325403



aria@excavatorlongarm.com



excavatorlongarm.com

9 Huancui West Road, Cuishanhu New Area, Kaiping City, Guangdong Province, China