



Excavator Boom Construction Work Long Reach Digging Silt Sand

Our Product Introduction

for more products please visit us on excavatorlongarm.com

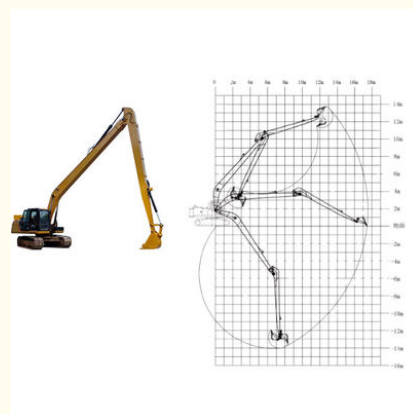
Basic Information

- Place of Origin: China, Guangdong
- Brand Name: Kaiping Zhonghe Machinery
- Certification: CE, patent, ISO
- Model Number: LRB019
- Minimum Order Quantity: 1 set / piece
- Price: USD 190.00-USD7600.00
- Packaging Details: bubble / wooden cases
- Delivery Time: 7-20/works
- Payment Terms: T/T, L/C
- Supply Ability: 6 sets per week



Product Specification

- Condition: New, Brand New
- Suitable Excavator: 6 Ton - 50ton
- Warranty: 6 Months
- Material: Shaogang Q355B, Q690D Or Others As You Request
- Bucket: Available
- Bucket Cylinder: Included
- Highlight: **Silt Sand Excavator Boom, Construction Work Excavator Boom, Long Reach Digging Excavator Boom**



More Images



Product Description

Excavator Long Reach Arm with Stone Grapple for River Work

Brief Overview of excavator long boom arm for sale:

In construction activities, a long reach boom excavator is exceptionally efficient for excavation tasks. Its extended arm allows access to larger areas than a standard boom arm, reducing the need for the operator to move the machine frequently. This versatile long boom arm is compatible with multiple excavator brands and excels in excavating materials like sand, soil, silt, and gravel. Long boom excavators are commonly used for river cleaning, dredging, and unloading cargo at jetties. Reinforcements in high-stress areas ensure the long boom excavator operates effectively while minimizing maintenance downtime. The long arm excavator designed for Komatsu is made from Shaogang Q355B steel, known for its excellent welding properties and resistance to cracking.

Quick Overview of excavator long arm:

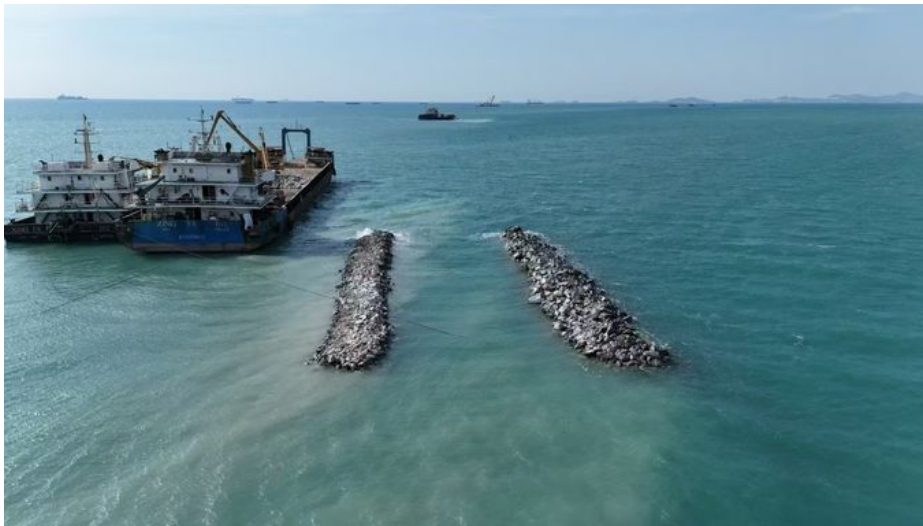
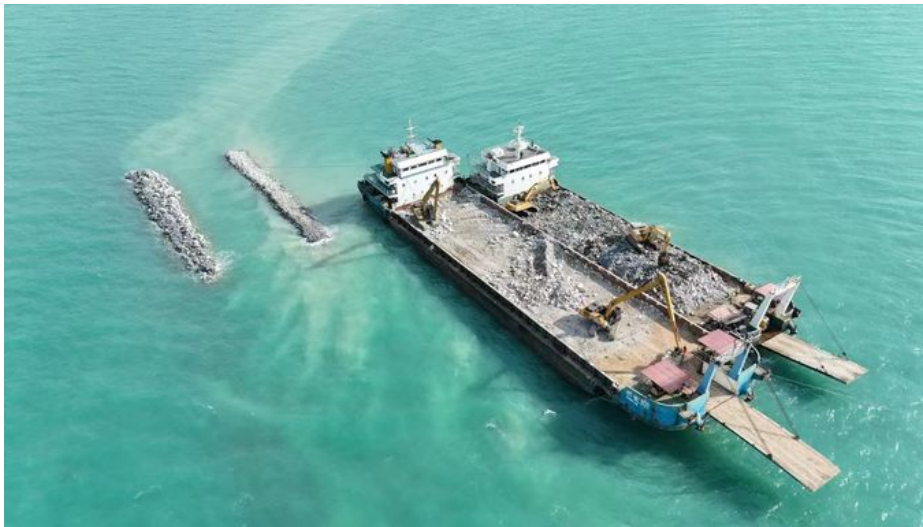
Premium Materials: Available in Shaogang Q355B, Q690D, or other specified options.

Ideal Uses: Suitable for dredging, and excavating sand, soil, silt, and more.

Professional Design: Every set of long excavator boom is design comprehensively. Every steps are full considered.

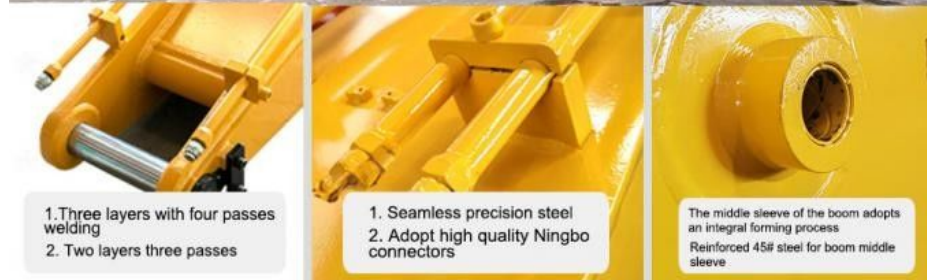
Thorough Testing: Extensive testing is performed before delivery to clients.





Excavator Model(m)	Counterweight (ton)	Bucket capacity (cbm)		Length(m)
		Bucket cylinder	Arm(m)	
30-36T	0	0.6	11	19-20
		20T	9	
37-39T	0	0.6	11	
		20T	9	
40-47T	0	1	11	21-22
		25T	9	
25-28T	3.5T	0.4	12	
		12T	10	
30-33T	2.5T	0.4	12	
		12T	10	
35-39T	1.5T	0.6	12	
		20T	10	
		0.8	12	

40-47T	0	20T	10	23-24
30-35T	3.5T	0.4	13	
		12T	11	
35-39T	2T	0.4	13	
		12T	11	
40-47T	0	0.6	13	
		20T	11	







Welcome to contact for a big discount!

Whatsapp: [+8613822325403](https://wa.me/8613822325403)

Email: aria@excavatorboomarm.com
13822325403@163.com



Jiangmen Kaiping Zhonghe Machinery Manufacturing Co., Ltd



+86 13822325403



aria@excavatorboomarm.com



excavatorlongarm.com

9 Huancui West Road, Cuishanhu New Area, Kaiping City, Guangdong Province, China