



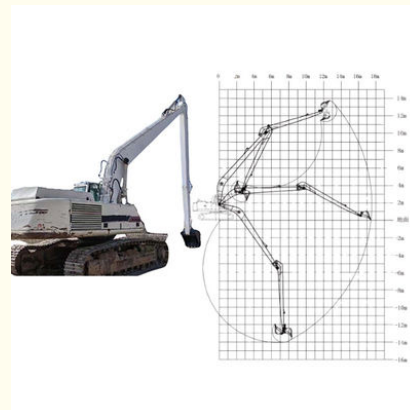
## 20M Long Reach Boom Excavator With Bucket Cylinder For Digging Sand

Our Product Introduction

for more products please visit us on excavatorlongarm.com

### Basic Information

- Place of Origin: China
- Brand Name: Kaiping Zhonghe Machinery
- Certification: CE, patent, ISO
- Model Number: LRB031
- Minimum Order Quantity: 1 set / piece
- Price: USD 890.00-USD7800.00
- Packaging Details: bubble / wooden cases
- Delivery Time: 7-20/works
- Payment Terms: T/T, L/C
- Supply Ability: 5 sets per week

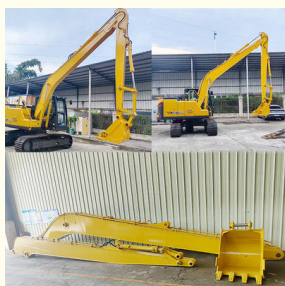


### Product Specification

- Material: Shaogang Q355B, Q690D Or Others As You Request
- Condition: New
- Warranty: 6 Months
- Suitable Excavator: 25 Ton Excavator And Above
- Quality: Premium
- Bucket Cylinder: Available
- Bucket: Available
- After-sales Service: Available
- Highlight: **Bucket Cylinder Long Reach Boom Excavator, Digging Sand Long Reach Boom Excavator, 20M Long Reach Boom Excavator**



### More Images



## Product Description

### 24m Long Reach Boom Excavator with Extended Boom Arm Available for Purchase, Including Bucket Cylinder for River Dredging and Cleaning

**Key Information:**

High-Quality Materials: Constructed with Shaogang Q355B, Q690D, or alternative materials as requested.

Ideal Usage: Suitable for dredging, sand excavation, soil removal, silt handling, and more.

Rigorous Quality Assurance: Comprehensive testing conducted prior to delivery to clients.

**Overview of Kaiping Zhonghe Machinery's Long reach boom excavator:**

In construction applications, a long reach boom excavator plays a crucial role in excavation tasks. Its extended arm allows it to access a wider area compared to standard boom arms, eliminating the need for the operator to reposition the excavator frequently. This excavator long boom is compatible with various brands and is ideal for digging materials such as sand, soil, silt, and gravel. Commonly utilized for river cleaning, dredging, and unloading cargo at jetties, the long boom excavator is designed with reinforced areas to withstand significant stress, promoting effective operation and reducing maintenance downtime. The Komatsu long arm excavator is constructed from Shaogang Q355B, known for its superior welding capabilities and resistance to cracking.



#### Specifications of one set of long reach boom excavator:

Big Boom, small arm, bucket, bucket cylinder, pins, other excavator accessories

Welcome to send your excavator model to us for double check. Whatsapp: [+8613822325403](https://wa.me/8613822325403) Email: [aria@excavatorboomarm.com](mailto:aria@excavatorboomarm.com)

Excavator Model(m)	Counterweight (ton)	Bucket capacity (cbm)		Length(m)
		Bucket cylinder	Arm(m)	
30-36T	0	0.6	11	19-20
		20T	9	
37-39T	0	0.6	11	
		20T	9	
40-47T	0	1	11	21-22
		25T	9	
25-28T	3.5T	0.4	12	
		12T	10	
30-33T	2.5T	0.4	12	21-22
		12T	10	
35-39T	1.5T	0.6	12	
		20T	10	
40-47T	0	0.8	12	23-24
		20T	10	
30-35T	3.5T	0.4	13	
		12T	11	
35-39T	2T	0.4	13	23-24
		12T	11	
40-47T	0	0.6	13	
		20T	11	

#### Outstanding Design Features of the Long Reach Boom Arm:

All plates are beveled prior to welding, which improves the strength of the welds and reduces the risk of cracking. Equipped with Ningbo Connectors for superior performance.

Utilizes high-quality welding wire from Jinqiao for enhanced durability.

Thoughtful arrangement of internal ribs ensures that the long reach boom is robust and has an extended lifespan.





1. Three layers with four passes welding
2. Two layers three passes



1. Seamless precision steel
2. Adopt high quality Ningbo connectors



The middle sleeve of the boom adopts an integral forming process  
Reinforced 45# steel for boom middle sleeve



1. Pin holes are boring after welding
2. The ear seat is built with reinforced vertical bar plates



1. Strengthen the inner part of the box and the boom seat sleeve with inclined tendons
2. Graphite alloy copper sleeve



**Steel sleeve**

**Graphite alloy copper sleeve**

W/A: 0086 13822325403







Welcome to contact for a big discount!

Whatsapp: [+8613822325403](https://wa.me/8613822325403)

Email: [aria@excavatorboomarm.com](mailto:aria@excavatorboomarm.com)

[13822325403@163.com](mailto:13822325403@163.com)



**Jiangmen Kaiping Zhonghe Machinery Manufacturing Co., Ltd**



+86 13822325403



[aria@excavatorboomarm.com](mailto:aria@excavatorboomarm.com)



[excavatorlongarm.com](http://excavatorlongarm.com)

9 Huancui West Road, Cuishanhu New Area, Kaiping City, Guangdong Province, China