



## Excavator Tunnel Arm For Ex60 Zx135 Zx200 Pc240 With Bucket Breaker

Our Product Introduction

for more products please visit us on [excavatorlongarm.com](http://excavatorlongarm.com)

### Basic Information

- Place of Origin: Guangdong Province, China
- Brand Name: Kaiping Zhonghe Machinery
- Certification: CE, patent, ISO
- Model Number: SDB0012
- Minimum Order Quantity: 1 set / piece
- Price: USD 133.00-USD4999.00
- Packaging Details: bubble or wooden case
- Delivery Time: 6-35/works
- Payment Terms: T/T, L/C or others as you request
- Supply Ability: 8 sets per week



### Product Specification

- Apply To: 6ton--50 Ton
- Plate Thickness: Thicken And Strength
- Material: Shaogang Q355B
- Cylinders: Enlarged Cylinders
- Suitable Working Condition: Tunnel Construction Work, Work In Narrow Places
- After-sales Service: Available
- Suitable Excavator: Cat Hitachi Komatsu Kato Sumitomo Etc
- Warranty: 6 Months
- Highlight: **Bucket Breaker Excavator Tunnel Arm, Pc240 Excavator Tunnel Arm, Zx200 Excavator Tunnel Arm**



### More Images



## Product Description

### Excavator tunnel arm shorten heavy duty excavator rock boom and arm

Introduction of excavator shorten arm shorten boom:

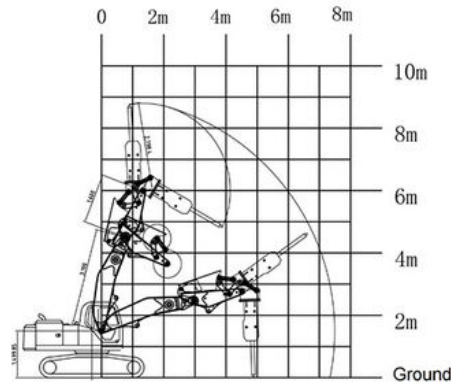
Introducing our high-quality excavator tunnel arm and tunnel boom, specifically engineered for heavy-duty applications. Designed to withstand the rigors of tough environments, these components are crafted from durable materials that ensure exceptional strength and longevity. The tunnel arm and boom feature reinforced structures that minimize the risk of cracking, even under intense pressure and heavy loads. Ideal for operations in confined spaces, they provide enhanced maneuverability while maintaining the power and reliability needed for demanding excavation tasks. Trust our tunnel arm and boom to deliver outstanding performance and durability on every job.

#### Some specs of excavator shorten arm:

Excavator Model ( ton)	Plate Thickness (mm)	Weight (kgs)
6-8 ton	10mm	590kgs 380kgs
10-15 ton	14mm	1130kgs 900kgs
20-24 ton	16mm	1300kgs 1050kgs
30-36 ton	25mm	2900kgs 2600kgs
45-50 ton	30mm	3200kgs 3000kgs

Welcome to send your excavator model to us for double check. Model drawing for your excavator will be sent soon. Whatsapp: [+86 13822325403](https://wa.me/8613822325403) Thanks a lot.

Key word: shorten heavy duty excavator rock boom and arm, excavator shorten heavy duty rock boom and arm, excavator tunnel arm/ shorten arm



Production Process of one set of excavator tunnel arm tunnel boom:



## Tunnel boom

- Meets the needs for powerful machines on rock breaker projects in confined tunnels
- A true customised reliable performer, with robust cylinder guard,,capable of break rock more effective, and with significantly smaller footprint.

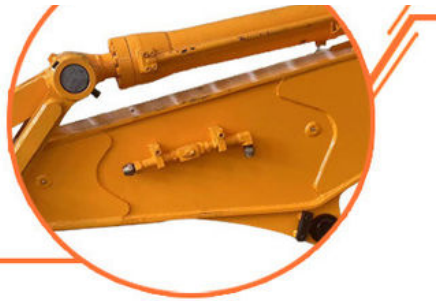


## High effectiveness

1. On the same machine, tunnel arm can obtain greater lifting capacity than standard arm.
2. Opening angle between boom and arm can reach 180 degrees

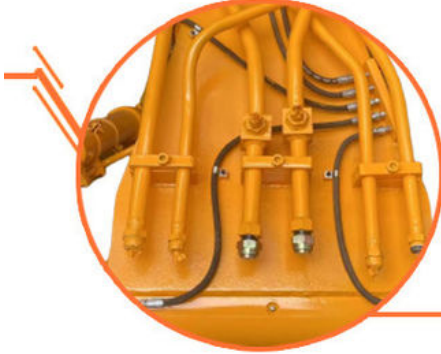
## Robust structure

1. The upper and lower cover plates are thicker.
2. The arm is filled with iron sand to reduce vibration
3. Robust cylinder guard



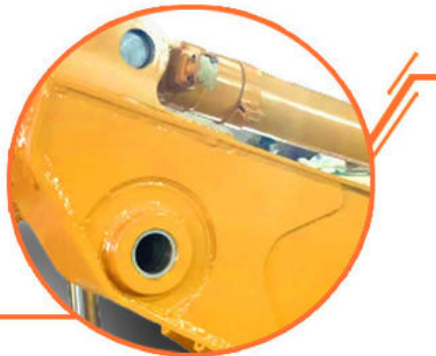
## Avoid oil leakage

1. Stop valves prevent oil leakage when replacing breaker by bucket.
2. Multi-layer welding for pipe connectors



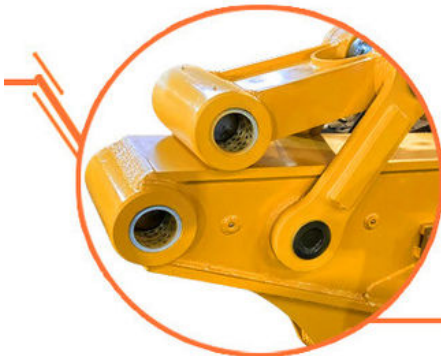
## Long service life

1. Cylinder protective cover design
2. Q355B material, high-quality accessories, full weld, reinforced stress position, etc.



## Pivot end

HD Boom with pivot end reinforcement Single piece design & thicker steel plates





# Feedback from Clients



from Shonn:  
very good tunnel boom.  
equip my breaker perfect



from Tonny:  
the boom is strong.  
excellent performance



from Mike:  
safe and high-effective  
very nice



from Tommy:  
the boom works very  
good. strong



WIA: +86 13822325403



**Beveling Machine**  
Every board will be beveled before being welded which enhances the weld bead

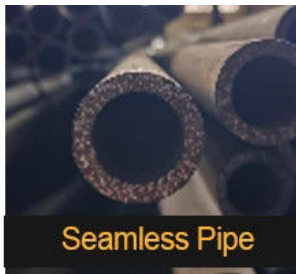
Panel is cut by CNC plasma machine with less deformation



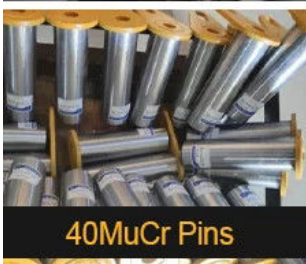
**Large floor-standing double-sided boring machine**  
Higher accuracy



**Certified Steel**



**Seamless Pipe**



**40MuCr Pins**



**Graphite Sleeve**



# Feedback from Clients



from Shonn:  
very good tunnel boom.  
equip my breaker perfect



from Tonny:  
the boom is strong.  
excellent performance



from Mike:  
safe and high-effective  
very nice



from Tommy:  
the boom works very  
good. strong



WIA: +86 13822325403

[More about Factory Show:](#)



Established in 2018, Kaiping Zhonghe Machinery is a combination of manufacturing and trading. Our products, including excavator long reach booms, demolition arms, 2-3 sections telescopic arms, tunnel arms, standard/rock buckets, grapples, and rippers, have been selling well in more than 40 countries and areas.

We are located in Guangdong Province, China. A 18000 m<sup>2</sup> 50 welding workers with over 7 years experience, 30 senior designers, and a high-tech R&D team (10+ years on customization, 100+ technical patents), strict production system (6+ years quality control and cost control) and warm-hearted service team. Our annual output of various types of excavator boom arms can reach up to 600 sets.

We strive to uphold our core principles of "Merit Quality, Sincerity Management, and Customer Satisfaction".

**Welcome to contact for Big Discount.**

**Whatsapp: 0086 13822325403**

**Email: [aria@excavatorboomarm.com](mailto:aria@excavatorboomarm.com)**

**[13822325403@163.com](mailto:13822325403@163.com)**



**Jiangmen Kaiping Zhonghe Machinery Manufacturing Co., Ltd**



+86 13822325403



[aria@excavatorboomarm.com](mailto:aria@excavatorboomarm.com)



[excavatorlongarm.com](http://excavatorlongarm.com)

9 Huancui West Road, Cuishanhu New Area, Kaiping City, Guangdong Province, China