



## Excavator Tunnel Arm For Digging Tunnel At Narrow Places

Our Product Introduction

for more products please visit us on [excavatorlongarm.com](http://excavatorlongarm.com)

### Basic Information

- Place of Origin: China, Guangdong Province
- Brand Name: Kaiping Zhonghe Machinery
- Certification: CE, patent, ISO
- Model Number: SDB0011
- Minimum Order Quantity: 1 set / piece
- Price: USD 153.00-USD4999.00
- Packaging Details: bubble or wooden case
- Delivery Time: 6-30/works
- Payment Terms: T/T, L/C or others as you request
- Supply Ability: 12 sets per week

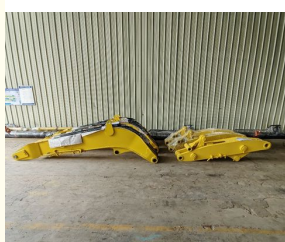


### Product Specification

- Suitable Working Condition: Tunnel Construction Work, Work In Narrow Places
- Cylinders: Enlarged Cylinders
- Warranty: 6 Months
- Plate Thickness: Thicken
- Quality: Premium
- Material: Shaogang Q355B
- Apply To: 6 Ton--50ton
- After-sales Service: Available
- Highlight: **Narrow Places Excavator Tunnel Arm, Digging Tunnel Excavator Tunnel Arm, Tunnel Excavator Tunnel Arm**



### More Images



## Product Description

### Shortened Boom and Arm for Heavy-Duty Excavators

#### Overview of Kaiping Zhonghe Machinery's Excavator tunnel arm for sale

The shortened boom and arm for heavy-duty excavators are designed for tasks like digging through hard sand and soil, particularly in confined spaces such as basements and tunnels.

#### Features of Kaiping Zhonghe Machinery's Excavator tunnel arm oil cylinder:

The excavator tunnel arm is more compact than the standard arm and boom, allowing it to accommodate larger buckets and breakers. Both the boom and arm are reinforced, and the cylinders have been increased in size, enhancing the excavator's overall power.

#### Specifications of one set of excavator tunnel arm for sale

A complete set of the shortened boom and arm includes:

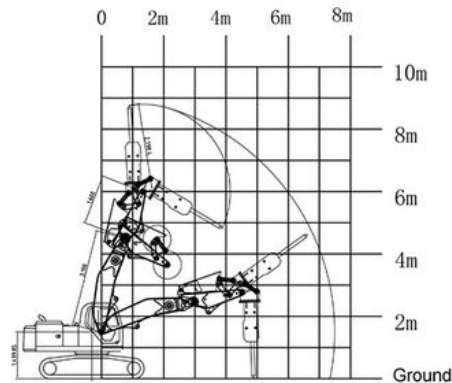
- One large boom
- One small arm
- One stick cylinder
- One bucket cylinder
- Six pins
- A breaker pipeline set
- High-pressure hoses
- Two valves

Additional excavator accessories

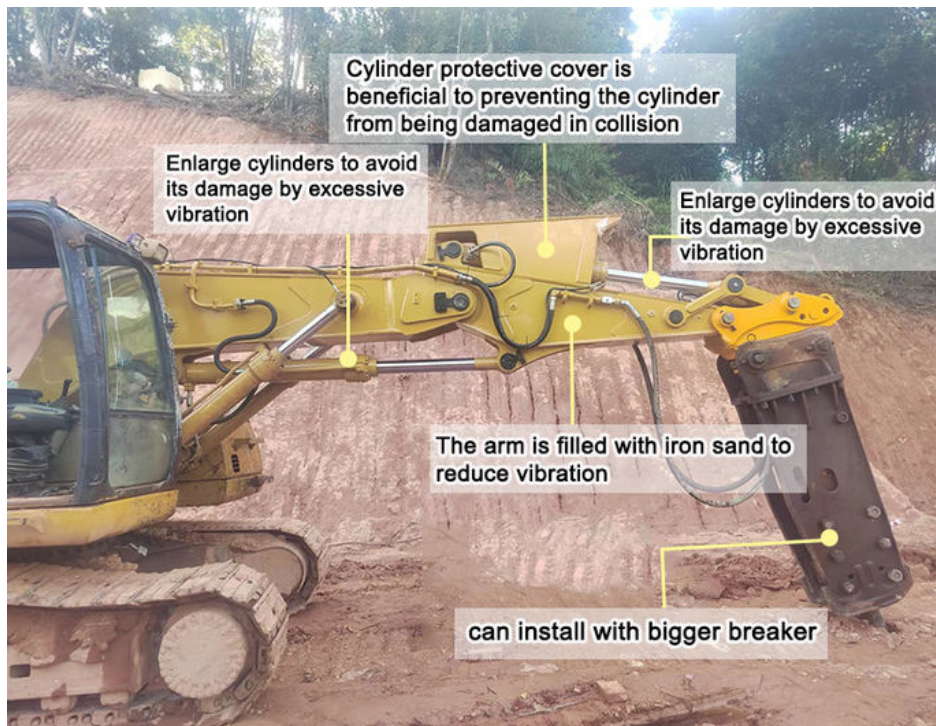
Excavator Model ( ton)	Plate Thickness (mm)	Weight (kgs)
6-8 ton	10mm	590kgs 380kgs
10-15 ton	14mm	1130kgs 900kgs
20-24 ton	16mm	1300kgs 1050kgs
30-36 ton	25mm	2900kgs 2600kgs
45-50 ton	30mm	3200kgs 3000kgs

Welcome to send your excavator model to us for double check, model drawing will be sent.

Whatsapp: [+86 13822325403](https://wa.me/8613822325403)



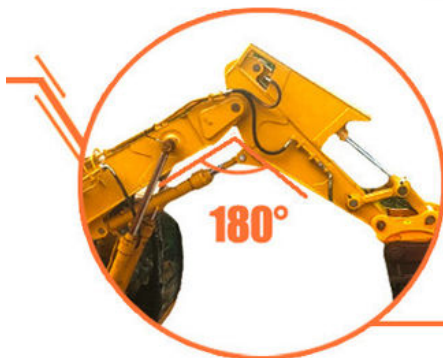




Production Process:

## Tunnel boom

- Meets the needs for powerful machines on rock breaker projects in confined tunnels
- A true customised reliable performer, with robust cylinder guard,,capable of break rock more effective, and with significantly smaller footprint.



## High effectiveness

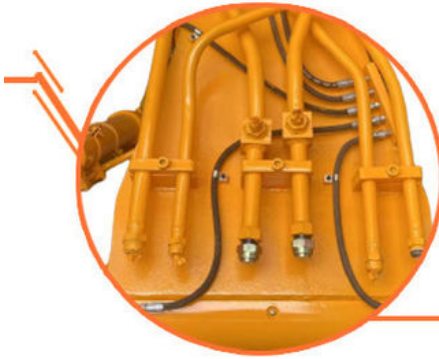
1. On the same machine, tunnel arm can obtain greater lifting capacity than standard arm.
2. Opening angle between boom and arm can reach 180 degrees

## Robust structure

1. The upper and lower cover plates are thicker



- 2. The arm is filled with iron sand to reduce vibration
- 3. Robust cylinder guard

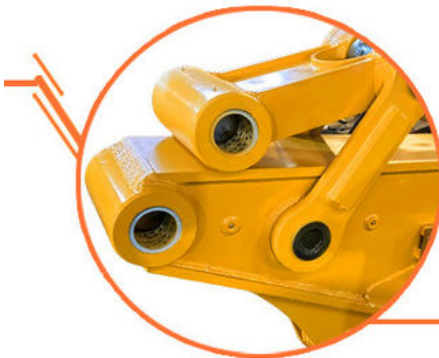


## Avoid oil leakage

1. Stop valves prevent oil leakage when replacing breaker by bucket.
2. Multi-layer welding for pipe connectors

## Long service life

1. Cylinder protective cover design
2. Q355B material, high-quality accessories, full weld, reinforced stress position, etc.



## Pivot end

HD Boom with pivot end reinforcement Single piece design & thicker steel plates



**Beveling Machine**  
Every board will be beveled before being welded which enhances the weld bead



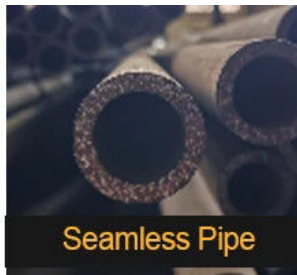
Panel is cut by CNC  
plasma machine with  
less deformation



Large floor-standing  
double-sided boring  
machine  
Higher accuracy



Certified Steel



Seamless Pipe



40MuCr Pins



Graphite Sleeve

# Feedback from Clients



from Shonn:  
very good tunnel boom.  
equip my breaker perfect



from Tonny:  
the boom is strong.  
excellent performance



from Mike:  
safe and high-effective  
very nice



from Tommy:  
the boom works very  
good. strong

[More about Factory Show:](#)





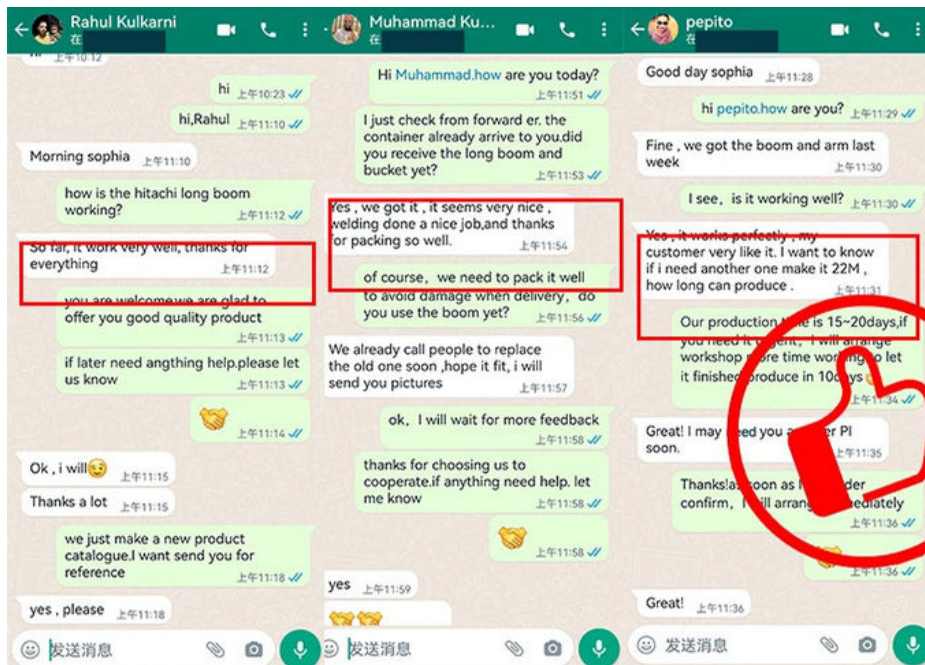
Established in 2018, Kaiping Zhonghe Machinery is a combination of manufacturing and trading. Our products, including excavator long reach booms, demolition arms, 2-3 sections telescopic arms, tunnel arms, standard/rock buckets, grapples, and rippers, have been selling well in more than 40 countries and areas.

We are located in Guangdong Province, China. A 18000 m<sup>2</sup> 50 welding workers with over 7 years experience, 30 senior designers, and a high-tech R&D team (10+ years on customization, 100+ technical patents), strict production system (6+ years quality control and cost control) and warm-hearted service team. Our annual output of various types of excavator boom arms can reach up to 600 sets.

We strive to uphold our core principles of "Merit Quality, Sincerity Management, and Customer Satisfaction".



- ☒ 24 Hour available
- ☒ Professional
- ☒ Easy Going and Patience
- ☒ Whatsapp: +86 13822325403



**Welcome to contact for a big discount!**

Whatsapp: +86 13822325403

Email: aria@excavatorboomarm.com

13822325403@163.com



**Jiangmen Kaiping Zhonghe Machinery Manufacturing Co., Ltd**



+86 13822325403



aria@excavatorboomarm.com



excavatorlongarm.com

9 Huancui West Road, Cuishanhu New Area, Kaiping City, Guangdong Province, China