



Long Reach Arm For Excavator With Standard Bucket For Digging House Foundation

Our Product Introduction

for more products please visit us on excavatorlongarm.com

Basic Information

- Place of Origin: Guangdong province, China
- Brand Name: Kaiping Zhonghe Machinery
- Certification: CE, patent, ISO
- Model Number: HB008
- Minimum Order Quantity: 1 set / piece
- Price: USD 138.00-USD4999.00
- Packaging Details: bubble, wooden case
- Delivery Time: 7-35/works
- Payment Terms: T/T, L/C
- Supply Ability: 6 sets per week



Product Specification

- Features: Long Reach, Digging Hard Sand, Easy Transportation
- Material: Shaogang Q355B
- Digging Depth: 6m, 8m, 10m, 12m
- Warranty: 6 Months
- Condition: New
- Apply To: 6ton - 50ton
- Suitable Working Conditions: Foundation Pit, Basement, Narrow Places
- Bucket Capacity: 0.1 Cbm - 1cbm
- Highlight: Long Reach Arm For Excavator, Standard Bucket Long Reach Arm, Digging House Foundation Long Reach Arm



More Images



Product Description

Long Reach Arm for Excavator with Standard Bucket Standard Arm

Specifications of Zhonghe Machinery's long reach excavator for sale:

Versatile Compatibility: Designed for excavators ranging from 6 to 50 tons, compatible with all brands, including Caterpillar, Hitachi, Komatsu, SANY, and Zoomlion.

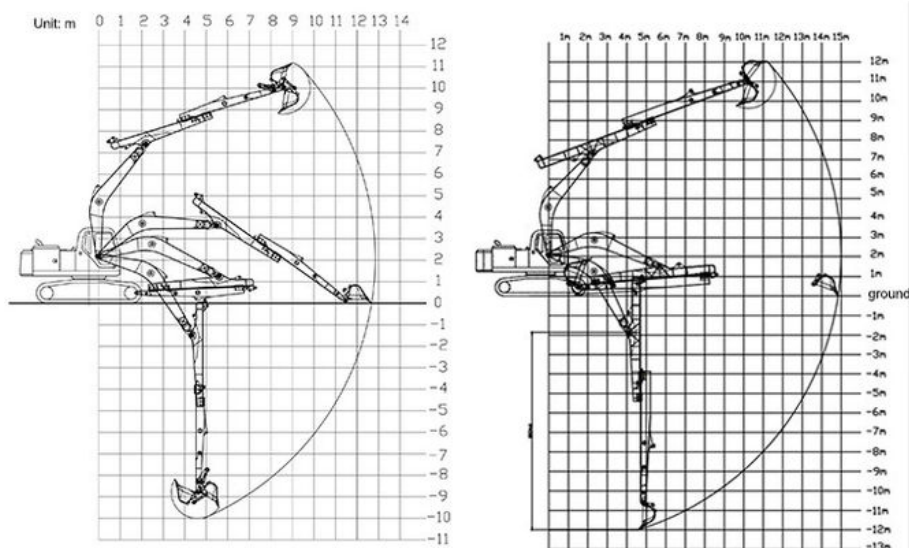
Special Features:

Double-Limit Design: Reduces vibration in the long cylinder of the excavator's sliding arm.

Double Oil Seal Design: Extends the lifespan of the telescopic arm and prevents oil leakage from the cylinder.

Reinforced Slider: The slider is crafted from a single solid plate, making it stronger than welded alternatives.

This design results in a longer lifespan and increased reliability. Kaiping Zhonghe Machinery's telescopic arm ensures enhanced durability.

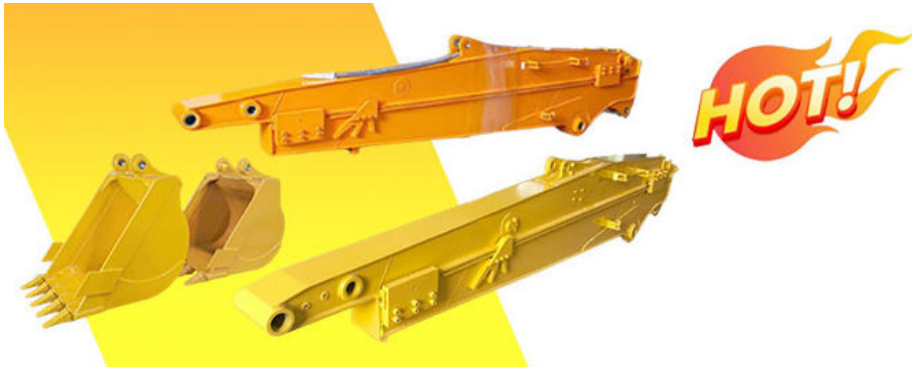


Excavator model(ton)	bucket capacity (cbm)	Maximum Digging Depth
3-4 ton	0.1 cbm	4m
6-8 ton	0.2 cbm	6m
10-12 ton	0.35cbm	8m
20-27 ton	0.5 cbm	10m
30-36 ton	0.6 cbm	12m

Please send your excavator model to us. Suitable length will be sent according to your excavator model.



More details of our excavator sliding arm / telescopic excavator:



The double limit design of the sliding cylinder prevents cylinder jolting and over-pulling.

Telescopic cylinder double oil seal design extends the service



Seal design extends the service life of the cylinder



Cover plates are cut from a whole piece but not spliced, to be more firm and not easy to deform.

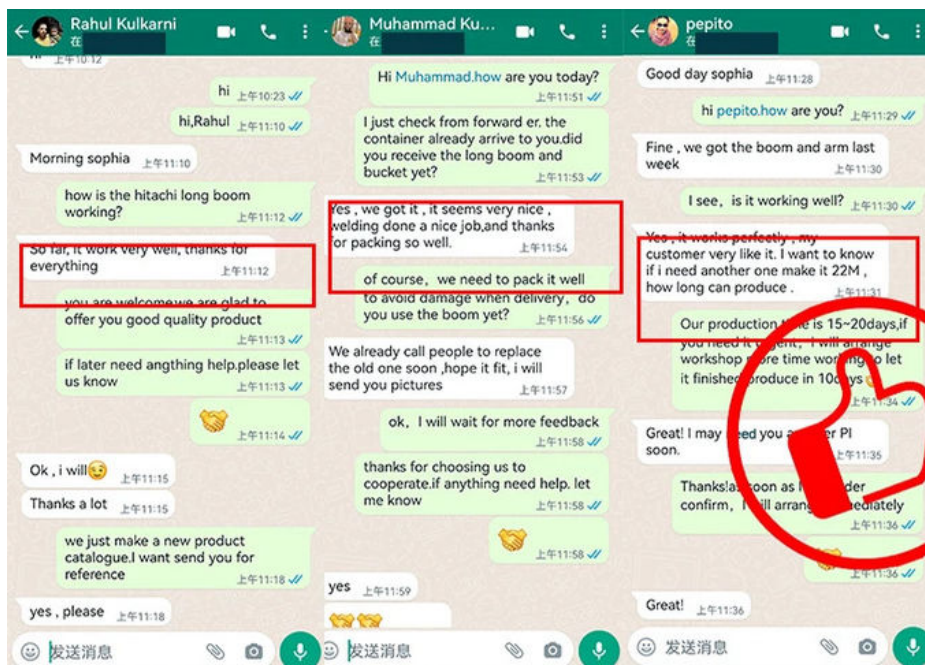


Built-in wear-resistant plastic slider, Easy to replace and maintain



The tube has leakage holes to reduce water accumulation inside the arm tube, thereby reducing internal corrosion.





Established in 2018, Kaiping Zhonghe Machinery is a combination of manufacturing and trading. Our products, including excavator long reach booms, demolition arms, 2-3 sections telescopic arms, tunnel arms, standard/rock buckets, grapples, and rippers, have been selling well in more than 40 countries and areas.

We are located in Guangdong Province, China. A 18000 m² 50 welding workers with over 7 years experience, 30 senior designers, and a high-tech R&D team (10+ years on customization, 100+ technical patents), strict production system (6+ years quality control and cost control) and warm-hearted service team. Our annual output of various types of excavator boom arms can reach up to 600 sets.

We strive to uphold our core principles of "Merit Quality, Sincerity Management, and Customer Satisfaction".

Welcome to contact Aria for a big discount!

Whatsapp: [+86 13822325403](https://wa.me/8613822325403)

Email: aria@excavatorboomarm.com

13822325403@163.com



Jiangmen Kaiping Zhonghe Machinery Manufacturing Co., Ltd



+86 13822325403



aria@excavatorboomarm.com



excavatorlongarm.com

9 Huancui West Road, Cuishanhu New Area, Kaiping City, Guangdong Province, China