

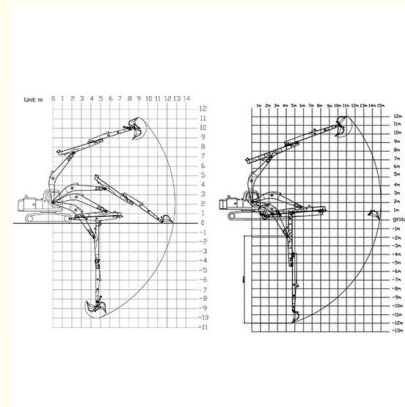


## Excavator Long Arm Excavator Sliding Arm Long Reach 12m 16m For ZX490

### Our Product Introduction

#### Basic Information

- Place of Origin: Guangdong Province, China
- Brand Name: Kaiping Zhonghe Machinery
- Certification: CE, patent, ISO
- Model Number: HB005
- Minimum Order Quantity: 1 set / piece
- Price: USD 148.00-USD5899.00
- Packaging Details: bubble, wooden case
- Delivery Time: 5-35/works
- Payment Terms: T/T, L/C
- Supply Ability: 10 sets per week



#### Product Specification

- Features: Long Reach, High Effective And Longer Life-span
- Bucket Capacity: 0.1 Cbm - 1cbm
- Condition: New, Brand New
- Material: Shaogang Q355B
- Digging Depth: 4m, 8m, 10m, 12m
- Apply To: 20ton
- Warranty: 6 Months For Sliding Arm, 3 Months For Bucket
- Suitable Working Conditions: Foundation Pit, Basement, Narrow Places
- Highlight: 12m Excavator Long Arm,  
ZX490 Excavator Long Arm,  
16m Excavator Long Arm



#### More Images



## Product Description

### Long Boom Excavator For Sale with Standard Bucket Clamshell Bucket

#### Brief introduction of long reach arm for excavator:

Special design of Telescopic excavator with standard bucket: double limit design: prevent the sliding arm from vibration. Inner slider can prevent the middle two plates connect with each other. The working efficiency of excavator telescopic is high.

**One set of telescopic arm include:**sliding arm, bucket, one two-side switch, 2 pins, 2 high-pressure hoses.(Other excavator accessories are also available.)



Excavator model(ton)	bucket capacity (cbm)	Maximum Digging Depth(m)
3-4 ton	0.1 cbm	4m
6-8 ton	0.2 cbm	6m
10-12 ton	0.35cbm	8m
20-27 ton	0.5 cbm	10m
30-36 ton	0.6 cbm	12m

Welcome to send you excavator model to us for double check. Thanks a lot.





#### **Production Process for a Telescopic Boom Excavator:**

**High Precision:** A large floor-standing double-sided boring machine guarantees machining accuracy of at least 0.05mm.

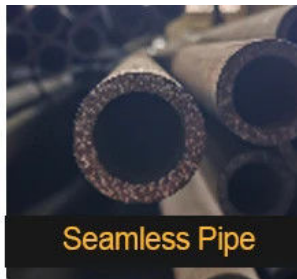
**Expert Production:** All personnel are thoroughly trained.

**Thorough Testing:** Every step is closely monitored for quality assurance.





Certified Steel



Seamless Pipe

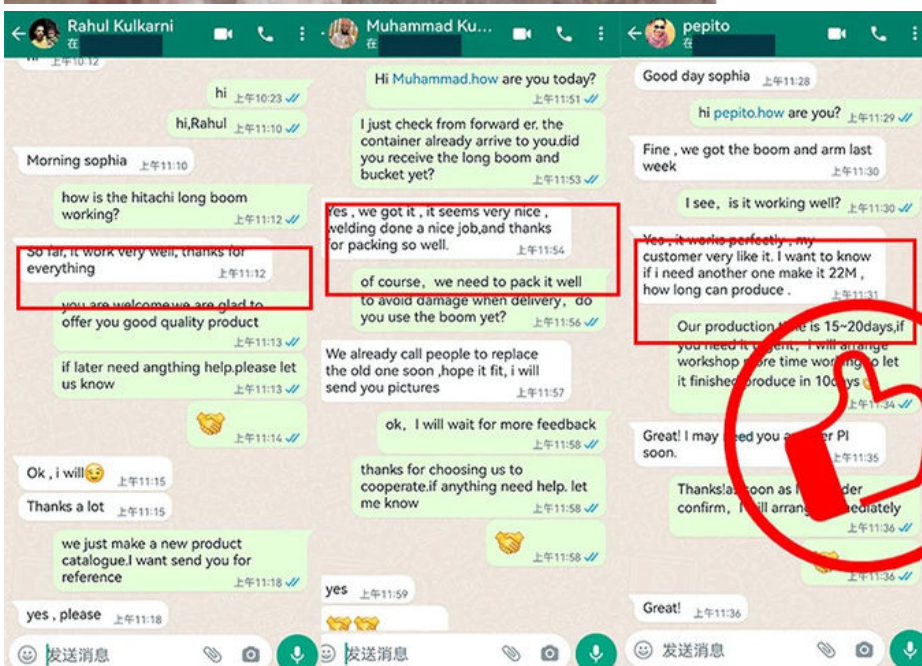


40MuCr Pins



Graphite Sleeve

Enhanced connectors which can bear larger pressure:







**Any interest, welcome to contact Aria for a big discount!**

Whatsapp: [+86 13822325403](https://wa.me/8613822325403)

Email: [aria@excavatorboomarm.com](mailto:aria@excavatorboomarm.com)  
[13822325403@163.com](mailto:13822325403@163.com)



**Jiangmen Kaiping Zhonghe Machinery Manufacturing Co., Ltd**



+86 13822325403



[aria@excavatorboomarm.com](mailto:aria@excavatorboomarm.com)



[excavatorlongarm.com](http://excavatorlongarm.com)

9 Huancui West Road, Cuishanhu New Area, Kaiping City, Guangdong Province, China