



Grapple Telescopic Arm China Excavator Telescopic Boom Factory

Our Product Introduction

for more products please visit us on excavatorlongarm.com

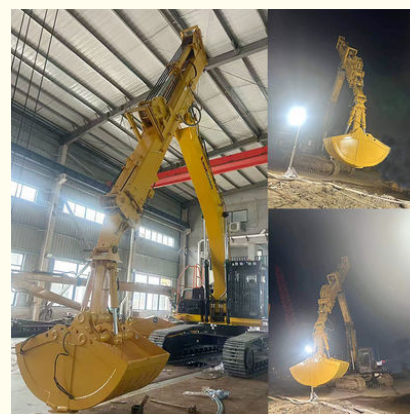
Basic Information

- Place of Origin: Guangdong Province, China
- Brand Name: Kaiping Zhonghe Machinery
- Certification: Patents, ISO, CE
- Model Number: Excavator Telescopic Arm 007
- Minimum Order Quantity: 1 piece / set
- Price: USD 139.00-USD8000.00
- Packaging Details: Bubble / wooden cases
- Delivery Time: 7 days-20 days
- Payment Terms: T/T, L/C, or others as you request
- Supply Ability: 7 sets per week

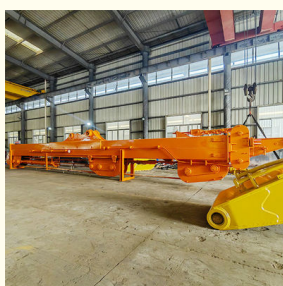


Product Specification

- Bucket Capacity: 1cbm 1.5cbm 2cbm 2.2cbm
- Warranty: 6 Months
- Number Of Sections: 3 Sections
- OEM / ODM: YES
- Welding: Premium
- Maximum Reach: 12m 18m 20m 31m 32m
- Condition: Brand New
- Model: ZH-008
- High Efficiency: YES
- Color: Red, Yellow, Blue White Customized
- Highlight: long reach excavator dipper arm, telescopic dipper arm for digging, excavator dipper arm for foundation



More Images



Product Description

Excavator Dipper Arm Telescopic Arm for Excavator Long Reach with Clamshell Bucket / Grapple

Introduction of One Set of Grapple Telescopic Arm

Kaiping Zhonghe Machinery introduces the high-quality excavator telescopic arm, perfect for digging house foundations, deep pits, caissons. Adjustable excavator telescopic arm is built to help excavators reach deeper and work faster, making it an excellent choice for construction projects. With its strong design and reliability, telescopic arm such as 32m telescopic arm, 25m telescopic arm enhances productivity, ensuring that any digging job is done quickly and effectively. Whether you're working on a home or a larger project, this excavator telescopic arm is the ideal solution for your excavation needs.

Digging depth of telescopic arm for excavator (m)	Clamshell bucket's bucket capacity(cbm)
16m	0.4cbm
18m	0.4cbm
20m	0.6cbm
25m	1.5cbm
30m	1.5cbm 2cbm
32m	2.2cbm 2.5cbm

Welcome to send the excavator model to us for double check.





Details of One Set of Excavator Telescopic Boom Factory



Four pulley design

There are two sliding wheels on the top and two on the bottom, which separate the high-pressure hose and the wire rope to reduce mutual wear. Less wear can extend the service life.



Adopt 30mm main rope

We use thicker wire ropes, which can withstand greater tension, are not easy to break, and withstand greater pressure. The wire ropes are highly wear-resistant and have a long service life.



26mm auxiliary wire rope

Here is the auxiliary wire rope, which is used to make the telescopic arm retractable when it is extended horizontally.



Ningbo connector

It is made of metal and has high compression resistance and expansion capacity. It is easy to load and unload, and can be loaded and unloaded freely.



High Quality----Nylon Sliders

Sliding block, it is nylon material, it can reduce grinding. Our sliding wheel is POM Material, with high mechanical strength and rigidity.



Lubrication concentrate system

Many holes, many holes on the top and at the side, it is easy and convenient for the operator to refill the lubrication oil, they all concentrate on the front of arm.

Kaiping Zhonghe Machinery's telescopic arm for excavators stands out for its exceptional quality and durability, crafted from high-grade materials designed to withstand the rigors of demanding work environments. Telescopic Excavator Arm is engineered with precision, ensuring that it meets the highest industry standards for performance and reliability. The use of premium materials in sales no 1 excavator telescopic arm not only enhances their strength but also contributes to their **lightweight design, improving the overall efficiency of the excavator**. This combination of durability and reduced weight allows for greater maneuverability and extended reach, making our excavator telescopic arm ideal for a variety of applications, from construction to landscaping. Additionally, our manufacturing process incorporates advanced technology and rigorous quality control measures. Each unit undergoes extensive testing to ensure it can withstand heavy loads and harsh conditions, providing peace of mind to operators who rely on our products for their day-to-day operations. At Zhonghe Machinery, we are committed to delivering high-quality solutions that enhance productivity and performance. Our excavator telescopic dipper arm are a testament to our dedication to excellence, ensuring that our clients receive the best equipment for their excavation needs.

Feedback of One Set of China Excavator Telescopic Boom Factory From Clients



Cleaning and dredging



Telescopic arm test



Bridge construction projects



Deep pit work



For Deep foundation pit construction project



For unloading materials



For Large-scale earthworks



Feedback from Clients



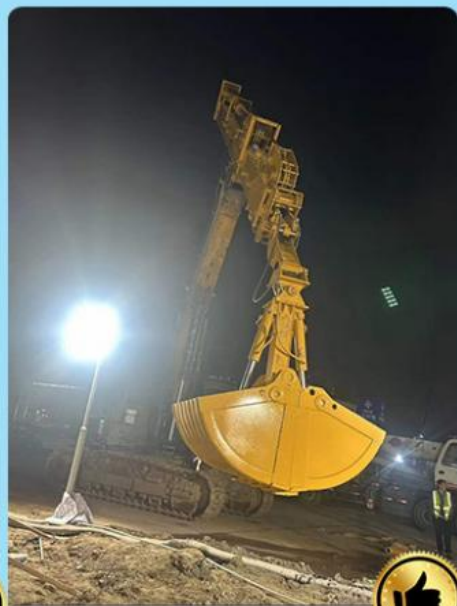
from Jimmy:
cool, the telescopic boom
works effectively. suitable for
grabbing.



from Michael:
suitable for digging caisson.
save energy.



from Tonny:
Very excellent telescopic boom.
on my excavator suitably. perfect



from Tom:
The boom works very good.
safe and balanced operation
very nice service.

[Contact Us!](#)



KAIPING ZHONGHE MACHINERY MANUFACTURING CO. LTD



Aria

Whatsapp: +86 13822325403

Email: aria@excavatorlongarm.com

Web: www.excavatorlongarm.com



Jiangmen Kaiping Zhonghe Machinery Manufacturing Co., Ltd



+86 13822325403



aria@excavatorlongarm.com



excavatorlongarm.com

9 Huancui West Road, Cuishanhu New Area, Kaiping City, Guangdong Province, China