

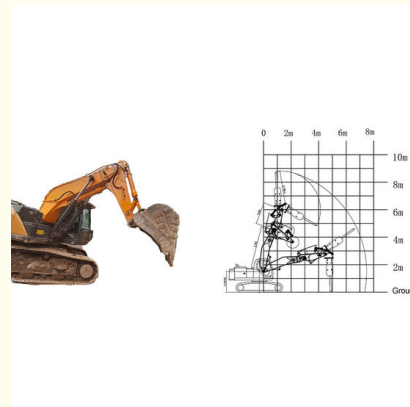
Shaogang Q355B Excavator Tunnel Arm For Narrow Tunnel Excavation Needs

Our Product Introduction

for more products please visit us on excavatorlongarm.com

Basic Information

- Place of Origin: Guangdong Province, China
- Brand Name: Kaiping Zhonghe Machinery
- Certification: CE, patent, ISO
- Model Number: SDB0019
- Minimum Order Quantity: 1 set / piece
- Price: USD 133.00-USD5999.00
- Packaging Details: bubble or wooden case
- Delivery Time: 6-35/works
- Payment Terms: T/T, L/C or others as you request
- Supply Ability: 6 sets per week



Product Specification

- Warranty: 6 Months
- Suitable Working Condition: Tunnel Construction Work, Work In Narrow Places
- Suitable Excavator: Cat Hitachi Komatsu Kato Sumitomo Etc
- Apply To: 6ton--50 Ton
- Material: Shaogang Q355B
- Cylinders: Enlarged Cylinders
- Plate Thickness: Thicken
- After-sales Service: Available
- Highlight: **Q355B Excavator Tunnel Arm,
Shaogang Excavator Tunnel Arm,
Narrow Tunnel Excavation Excavator Arm**



More Images



Product Description

Compact Excavator Arm for Tunnel Work:

This compact excavator arm is specifically designed for tunnel excavation and operations in confined spaces.

Enhanced Excavator Arm with Enlarged Bucket/Breaker:

Featuring upgraded cylinders, this tunnel arm is tailored for tough excavation tasks such as breaking and digging in tunnels. When dealing with challenging materials like hard sand and dense soil, it's crucial to have robust plates and cylinders.

Excavator tunnel arm for sale has been reinforced with thicker plates and larger cylinders, making it durable and resistant to cracking.

For 30-36 ton excavators with a short reach arm, the plate thickness can reach up to 25mm. Tunnel arm excavator is sufficiently strong to handle tough sand, hard soil, and rocky conditions.

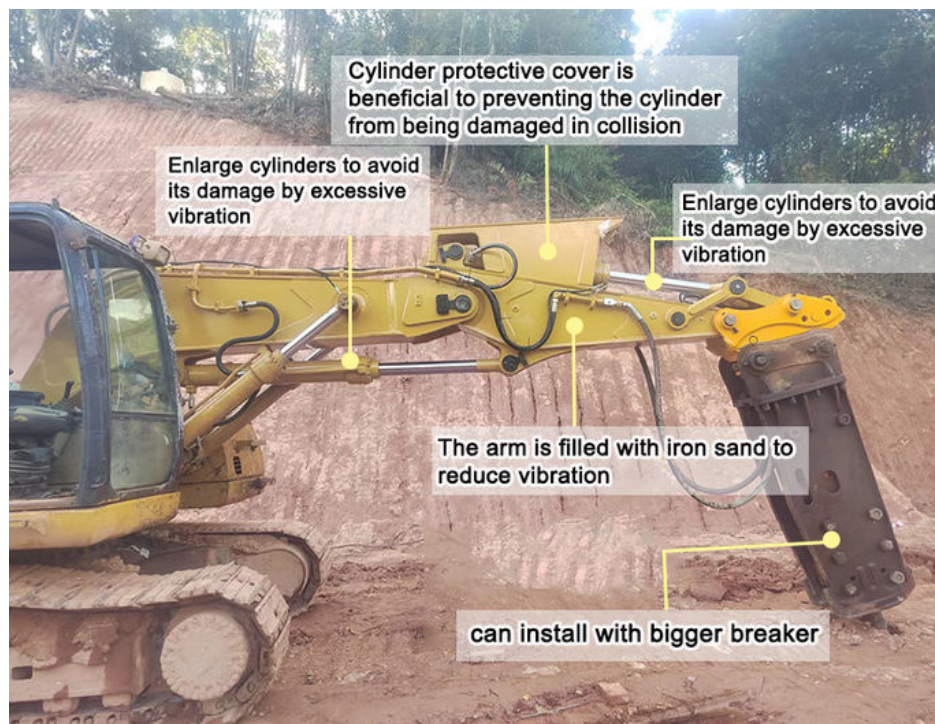
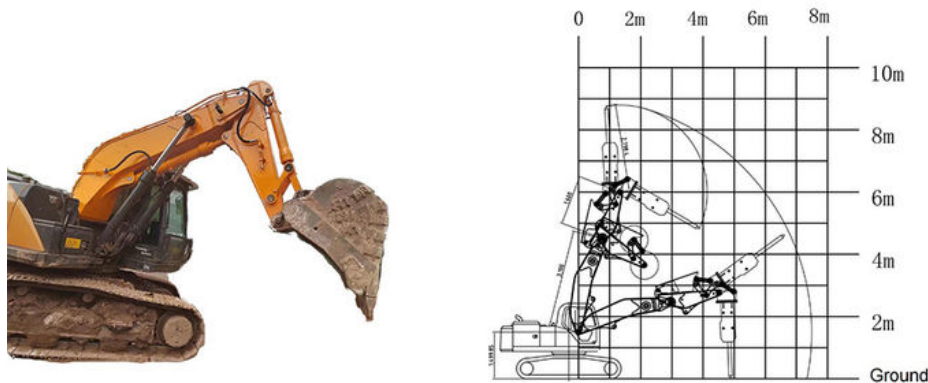
Included in excavator tunnel arm kit are:

One large boom, one small arm, one stick cylinder, one bucket cylinder, six pins, a breaker pipeline assembly, high-pressure hoses, two valves, and various other essential accessories for the excavator.

Excavator Model (ton)	Plate Thickness (mm)	Weight (kgs)
6-8 ton	10mm	590kgs 380kgs
10-15 ton	14mm	1130kgs 900kgs
20-24 ton	16mm	1300kgs 1050kgs
30-36 ton	25mm	2900kgs 2600kgs
45-50 ton	30mm	3200kgs 3000kgs

Welcome to send your excavator model to us for double check. Thanks a lot.

Key word: excavator short arm, excavator tunnel boom, excavator short boom, excavator boom and arm, digger boom arm, short reach boom, short reach arm, short boom arm, tunnel arm for excavator, digger tunnel arm, excavator short boom arm, digger attachment, excavator attachments, construction equipment boom, excavator shorten arm, tunnel boom arm, digger boom arm, tunneling excavator boom, excavator boom attachment

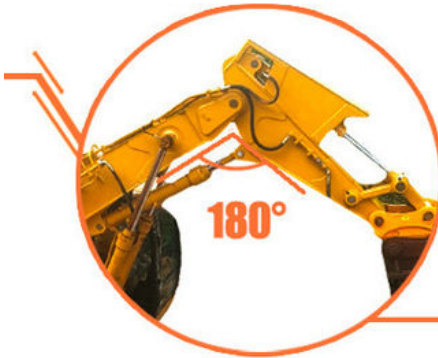


Production Process of one set of excavator tunnel arm tunnel boom:

Tunnel boom

Tunnel Boom

- Meets the needs for powerful machines on rock breaker projects in confined tunnels
- A true customised reliable performer, with robust cylinder guard,,capable of break rock more effective, and with significantly smaller footprint.

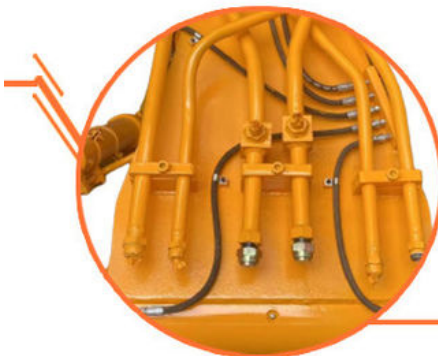
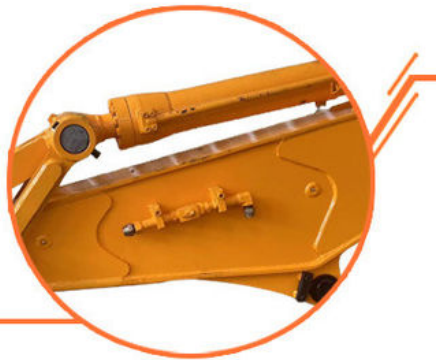


High effectiveness

1. On the same machine, tunnel arm can obtain greater lifting capacity than standard arm.
2. Opening angle between boom and arm can reach 180 degrees

Robust structure

1. The upper and lower cover plates are thicker.
2. The arm is filled with iron sand to reduce vibration
3. Robust cylinder guard



Avoid oil leakage

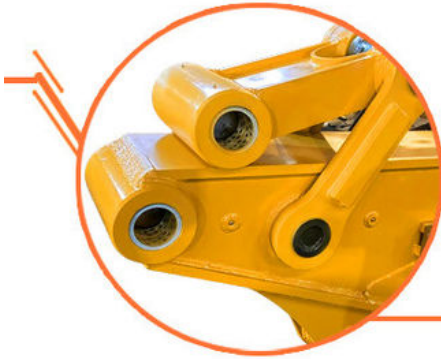
1. Stop valves prevent oil leakage when replacing breaker by bucket.
2. Multi-layer welding for pipe connectors

Long service life

1. Cylinder protective cover design



2. Q355B material, high-quality accessories, full weld, reinforced stress position, etc.



Pivot end

HD Boom with pivot end reinforcement Single piece design & thicker steel plates



Beveling Machine

Every board will be beveled before being welded which enhances the weld bead

Panel is cut by CNC plasma machine with less deformation

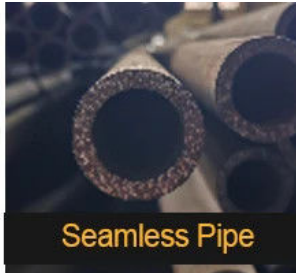




Large floor-standing
double-sided boring
machine
Higher accuracy



Certified Steel



Seamless Pipe



40MuCr Pins



Graphite Sleeve

Feedback from Clients



from Shonn:
very good tunnel boom.
equip my breaker perfect



from Tonny:
the boom is strong.
excellent performance



from Mike:
safe and high-effective
very nice



from Tommy:
the boom works very
good. strong

[More about Factory Show:](#)



Established in 2018, Kaiping Zhonghe Machinery is a combination of manufacturing and trading. Our products, including excavator long reach booms, demolition arms, 2-3 sections telescopic arms, tunnel arms, standard/rock buckets, grapples, and rippers, have been selling well in more than 40 countries and areas.

We are located in Guangdong Province, China. A 18000 m² 50 welding workers with over 7 years experience, 30 senior designers, and a high-tech R&D team (10+ years on customization, 100+ technical patents), strict production system (6+ years quality control and cost control) and warm-hearted service team. Our annual output of various types of excavator boom arms can reach up to 600 sets.

We strive to uphold our core principles of "Merit Quality, Sincerity Management, and Customer Satisfaction".

Welcome to contact for Big Discount.

Whatsapp: 0086 13822325403

Email: aria@excavatorboomarm.com

13822325403@163.com



Jiangmen Kaiping Zhonghe Machinery Manufacturing Co., Ltd



+86 13822325403



aria@excavatorboomarm.com



excavatorlongarm.com

9 Huancui West Road, Cuishanhu New Area, Kaiping City, Guangdong Province, China