



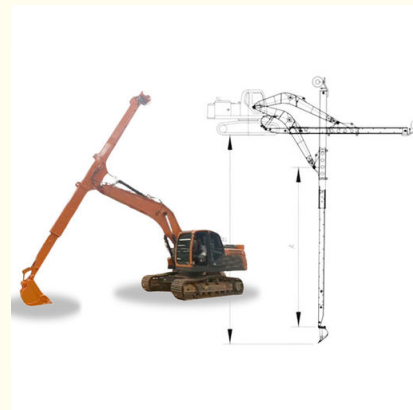
Excavator Telescopic Arm Telescopic Boom With Standard Bucket For Digging

Our Product Introduction

for more products please visit us on excavatorlongarm.com

Basic Information

- Place of Origin: China Guangdong
- Brand Name: Zhonghe Machinery
- Certification: CE, patent, ISO
- Model Number: SSB019
- Minimum Order Quantity: 1 set / piece
- Price: USD 179 -USD 5699
- Packaging Details: bubble, wooden cases or others as you request
- Delivery Time: 7-30 working days
- Payment Terms: T/T, L/C
- Supply Ability: 8 sets per week

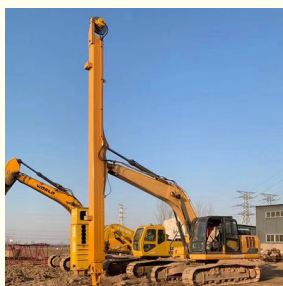


Product Specification

- Situation: New
- After-sales Service: Available
- Digging Depth: 6m-16m
- Warranty: 6 Months
- Apply To: 6 Ton - 36 Ton Excavator
- Quality: Premium
- Excavator Accessories: Bucket And Other Accessories
- Material: Q690D / HG785 / Q355B
- Highlight: digging telescopic arm telescopic boom, Excavator telescopic arm telescopic boom, Standard Bucket Excavator Telescopic Arm



More Images



Product Description

Q690D / HG785 Excavator telescopic arm with standard arm clamshell bucket grapple

Zhonghe Machinery's two-section telescopic arm's advantages:

- * narrow places, the excavator telescopic arm is with smaller slewing radius which enable it to reach narrow places
- * long reach: the digging depth of one set of excavator telescopic arm can reach 14m, 16m which is deeper than standard arm standard boom
- * cost effective: no need to change the big boom, only change the small arm. If the excavator is with breaker pipeline, than two-section telescopic arm is suitable on the excavator. The price is competitive. Welcome to send your excavator model to us for double check.

Overview of one set of excavator telescopic arm:

Enhanced Durability and Weight Reduction: Q690D / HG785

Excavation Depth Capabilities: Reach of 14M, 15M, and 16M

Extended Longevity: High-stress areas are fortified for increased durability

Reduced Maintenance: The exposed bucket cylinder on the telescopic boom excavator can be swapped out without the need to dismantle the arm.

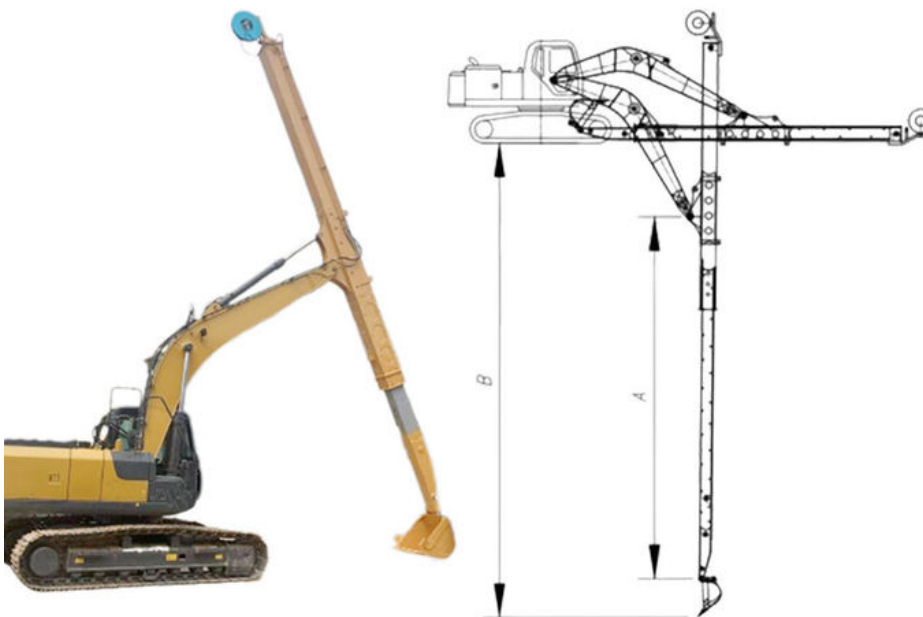




Specification of one set of excavator telescopic arm / excavator long reach arm:

Suitable Excavator Model	Maximum Digging Depth
6T	6m
20-36T	14m
24-36T	15m
25-36T	16m

Please send your excavator model directly to us, suitable recommend will be available.



The detail of Zhonghe Machinery's Excavator Telescopic Boom Telescopic Arm:

Ours



Multi-layer reinforcement
of stress-bearing parts

Others



without reinformant

Ours



The reel adopts enlarged
spring piece

Others



common type

VS

Feedback from Clients



from Jonson:
the telescopic boom is suitable for
digging caisson. excellent
performance.



from Ryon:
deeper digging depth. work
effectively. nice service



WIA: +86 13822325403



from Ton:
Very excellent telescopic boom.
on my excavator suitably. very
good job



from Cris:
safe and balanced. premium
excavator boom. perfect

Easy Transportation



Welcome to contact Aria for discounts.

Whatsapp: [0086 13822325403](https://wa.me/008613822325403)

Email: aria@excavatorboomarm.com

[13822325403@163.com](https://www.13822325403@163.com)



Jiangmen Kaiping Zhonghe Machinery Manufacturing Co., Ltd



+86 13822325403



aria@excavatorboomarm.com



excavatorlongarm.com

9 Huancui West Road, Cuishanhu New Area, Kaiping City, Guangdong Province, China