



20m 21m Cat Hitachi Excavator Long Reach Boom Yellow Red

Our Product Introduction

for more products please visit us on excavatorlongarm.com

Basic Information

- Place of Origin: Guangdong province, China
- Brand Name: Kaiping Zhonghe Machinery
- Certification: CE, patent, ISO
- Model Number: LRB013
- Minimum Order Quantity: 1 set / piece
- Price: USD 123.00-USD7800.00
- Packaging Details: bubble / wooden cases
- Delivery Time: 7-30/works
- Payment Terms: T/T, L/C
- Supply Ability: 5 sets per week



Product Specification

- Condition: New
- Bucket: Available
- Bucket Cylinder: Available
- Length: 20m 21m
- Material: Shaogang Q355B, Q690D Or Others As You Request
- Warranty: 6 Months
- Suitable Excavator: 30 Ton Excavator And Above
- Highlight: 20m excavator long reach boom,
21m excavator long reach boom,
Cat excavator long reach boom



More Images



Product Description

20m 21m Excavator long reach arm with standard bucket / grapple

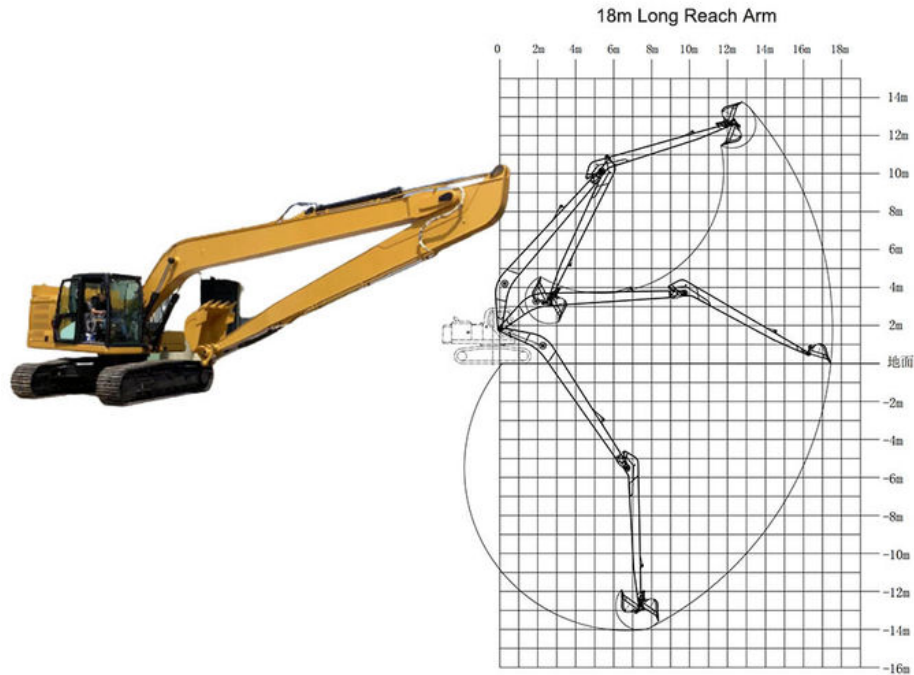
click here to have our product catalog: [2024 Zhonghe Machinery--Product Catalog.pdf](#)

Quick Details of Zhonghe Machinery's excavator long reach arm:

Excavator long reach arm is a very versatility tool which is common seen in construction work. For 20m, 21m long reach arm which is very suitable for 30 ton or above excavators. Kindly send your excavator model to us for double check.

Spes of Kaiping Zhonghe Machinery's long reach arm for excavators:

- * Versatility: the front part of excavator long reach arm can be a standard bucket / stone grapple / clamshell bucket etc.
- * High effective: 20m 21m which can reach larger than standard arm standard boom, the operation area is larger which can helps a lot at construction work. The operator no need to change the spot of excavator often.



Brief instruction of excavator long reach arm:

In construction projects, a long reach boom excavator is essential for efficient digging. Its extended arm allows it to access larger areas compared to a standard boom arm, eliminating the need for the operator to reposition the excavator. Long boom arms are compatible with various brands of excavators and are ideal for excavating materials such as sand, soil, silt, and gravel. Additionally, these excavators are commonly employed for tasks like river cleanup, dredging, and unloading goods at jetties. Areas subjected to significant stress are reinforced, enhancing the operational efficiency of the long boom excavator and reducing maintenance time. One set of the long arm excavator for Komatsu is constructed from Shaogang Q355B steel, which offers superior welding capabilities and resists cracking.



Specifications:

Big Boom:13m, small arm: 11m, bucket, bucket cylinder, pins, other excavator accessories

Excavator Model(m)	Counterweight (ton)	Bucket capacity (cbm)		Length(m)
		Bucket cylinder	Arm(m)	
30-36T	0	0.6	11	19-20
		20T	9	
37-39T	0	0.6	11	
		20T	9	
40-47T	0	1	11	21-22
		25T	9	
25-28T	3.5T	0.4	12	
		12T	10	
30-33T	2.5T	0.4	12	23-24
		12T	10	
35-39T	1.5T	0.6	12	
		20T	10	
40-47T	0	0.8	12	
		20T	10	
30-35T	3.5T	0.4	13	
		12T	11	
35-39T	2T	0.4	13	
		12T	11	
40-47T	0	0.6	13	
		20T	11	

Excellent design of long reach boom arm:

- * Using Ningbo Connectors --better connectors
- * Every plates are beveled before welding which enhances the welding strong, not easy cracking
- * Using better welding wire--Jinqiao Welding wire
- * Rational internal ribs arrangement--ensure the long reach boom is strong enough and longer life-span



1. Three layers with four passes welding
2. Two layers three passes



1. Seamless precision steel
2. Adopt high quality Ningbo connectors



- The middle sleeve of the boom adopts an integral forming process
- Reinforced 45# steel for boom middle sleeve



1. Pin holes are boring after welding
2. The ear seat is built with reinforced vertical bar plates



1. Strengthen the inner part of the box and the boom seat sleeve with inclined tendons
2. Graphite alloy copper sleeve



Steel sleeve

Graphite alloy copper sleeve

W/A: 0086 13822325403



Professional Production Process of excavator long reach arm:

High-Tech Research and Development Team

We utilize advanced drawing software to maximize the working range while ensuring safe operation.

Experienced Personnel

Our team comprises over 60 skilled staff members, including 30 welding experts with more than 5 years of experience.

Customization Options

- (1) Compatible with all excavator brands
- (2) Personalization available for color, length, and material
- (3) Additional pipelines can be incorporated to accommodate specific applications.





[Welcome to contact for a big discount.](#)



Jiangmen Kaiping Zhonghe Machinery Manufacturing Co., Ltd



+86 13822325403



aria@excavatorboomarm.com



excavatorlongarm.com

9 Huancui West Road, Cuishanhu New Area, Kaiping City, Guangdong Province, China