



## Telescopic Arm With Clamshell Bucket For 50ton Excavator 32m Yellow Red

Our Product Introduction

for more products please visit us on excavatorlongarm.com

### Basic Information

- Place of Origin: China
- Brand Name: Kaiping Zhonghe Machinery Manufacturing Co. Ltd
- Certification: Patents, ISO
- Model Number: SSB009
- Minimum Order Quantity: 1 piece / set
- Price: USD 113.00-USD18000.00
- Packaging Details: Bubble / wooden cases
- Delivery Time: 7 days-20 days
- Payment Terms: T/T, L/C, or others as you request
- Supply Ability: 8 sets per week



### Product Specification

- Model: SSB005
- Suitable Excavator: 20ton-50ton Excavator
- Bucket Capacity: 0.6m3, 1.5m3, 2.2m3
- Type: Excavator Attachment
- Welding: Premium
- Number Of Sections: 3 Sections
- Maximum Reach: 12m 18m 20m 25m 31m 32m
- Warranty: 6 Months
- Highlight: 32m Telescopic Arm,  
Clamshell Bucket Telescopic Arm,  
50ton Telescopic Arm



### More Images



## Product Description

### Excavator Long Reach Telescopic Boom for excavator 20m 25m for cat hitachi komatsu

#### **The introduction of Telescopic Arm telescopic boom:**

The Excavator Long Reach Boom and Telescopic Arm are designed to withstand significant stress while operating at high efficiency. The pulleys and bearings of the telescopic arm available for sale have been enlarged, featuring greater width and larger diameter for improved performance.

Introducing our premium set of excavator telescopic arms, engineered for superior performance and durability in challenging construction environments. Crafted from high-quality materials, these telescopic arms are designed to enhance an excavator's reach and digging capabilities, allowing operators to tackle deeper and more complex tasks with ease. Each arm features advanced pulleys and bearings, meticulously designed to provide smooth operation and withstand heavy loads. With a focus on precision and reliability, this set of telescopic arms is the ideal choice for professionals seeking to elevate their excavation projects to new heights. Experience unmatched efficiency and strength with our top-of-the-line excavator telescopic arm set.



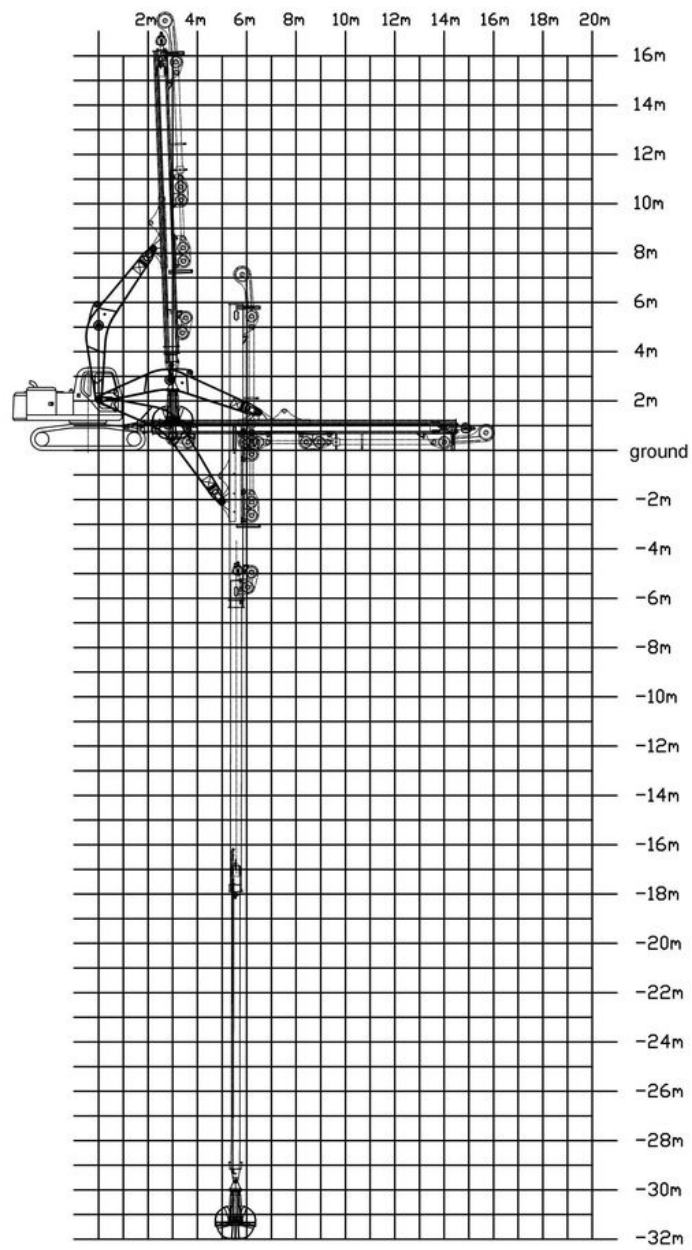


Some specs of Telescopic Boom Long Reach Boom Long Arm are as follow:

digging depth of telescopic dipper arm(m)	clamshell bucket's bucket capacity(cbm)
16m	0.4cbm
18m	0.4cbm
20m	0.6cbm
25m	1.5cbm
30m	1.5cbm 2cbm
32m	2.2cbm 2.5cbm

Welcome to send your excavator model to us for introducing the suitable length of excavator clamshell telescopic boom.





Some pictures of excavator dipper arm:







Professional and Experienced production process of excavator telescopic boom sliding arm:



Experienced Staffs:





**Design Department**

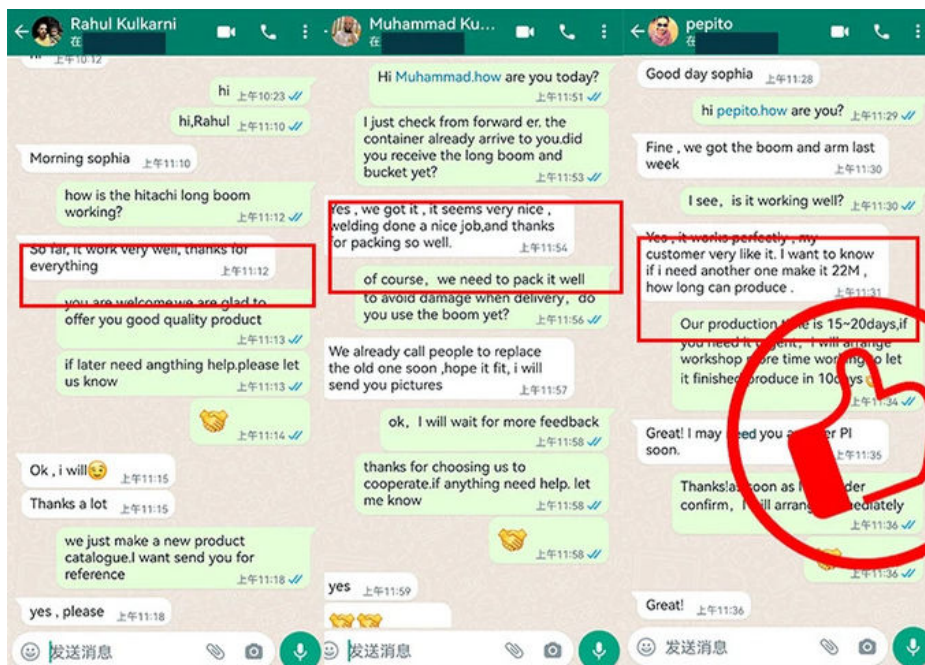


**Production Department**



**Sales Department**





Established in 2018, Kaiping Zhonghe Machinery is a combination of manufacturing and trading. Our products, including excavator long reach booms, demolition arms, 2-3 sections telescopic arms, tunnel arms, standard/rock buckets, grapples, and rippers, have been selling well in more than 40 countries and areas.

We are located in Guangdong Province, China. A 18000 m<sup>2</sup> 50 welding workers with over 7 years experience, 30 senior designers, and a high-tech R&D team (10+ years on customization, 100+ technical patents), strict production system (6+ years quality control and cost control) and warm-hearted service team. Our annual output of various types of excavator boom arms can reach up to 600 sets.

We strive to uphold our core principles of "Merit Quality, Sincerity Management, and Customer Satisfaction".

**Any interest, welcome to contact Aria~**



Jiangmen Kaiping Zhonghe Machinery Manufacturing Co., Ltd





+86 13822325403



aria@excavatorboomarm.com



excavatorlongarm.com

9 Huancui West Road, Cuishanhu New Area, Kaiping City, Guangdong Province, China