



Telescopic Boom Wheel Excavator BS900E Material Lighter And Stronger

Our Product Introduction

for more products please visit us on excavatorlongarm.com

Basic Information

- Place of Origin: China
- Brand Name: Kaiping Zhonghe Machinery
- Certification: Patents, ISO
- Model Number: SSB005
- Minimum Order Quantity: 1 piece / set
- Price: USD 159.00-USD18000.00
- Packaging Details: Bubble / wooden cases
- Delivery Time: 7 days-20 days
- Payment Terms: T/T, L/C, or others as you request
- Supply Ability: 7 sets per week



Product Specification

- Condition: Brand New
- Bucket Capacity: 2.2cbm
- Number Of Sections: 3 Sections
- Type: Excavator Attachment
- Model: SSB005
- Welding: Premium
- Maximum Reach: 12m 18m 20m 31m 32m
- Warranty: 6 Months
- Highlight: Stronger Telescopic boom wheel excavator,
Lighter Telescopic boom wheel excavator,
BS900E Telescopic boom wheel excavator



More Images



Product Description

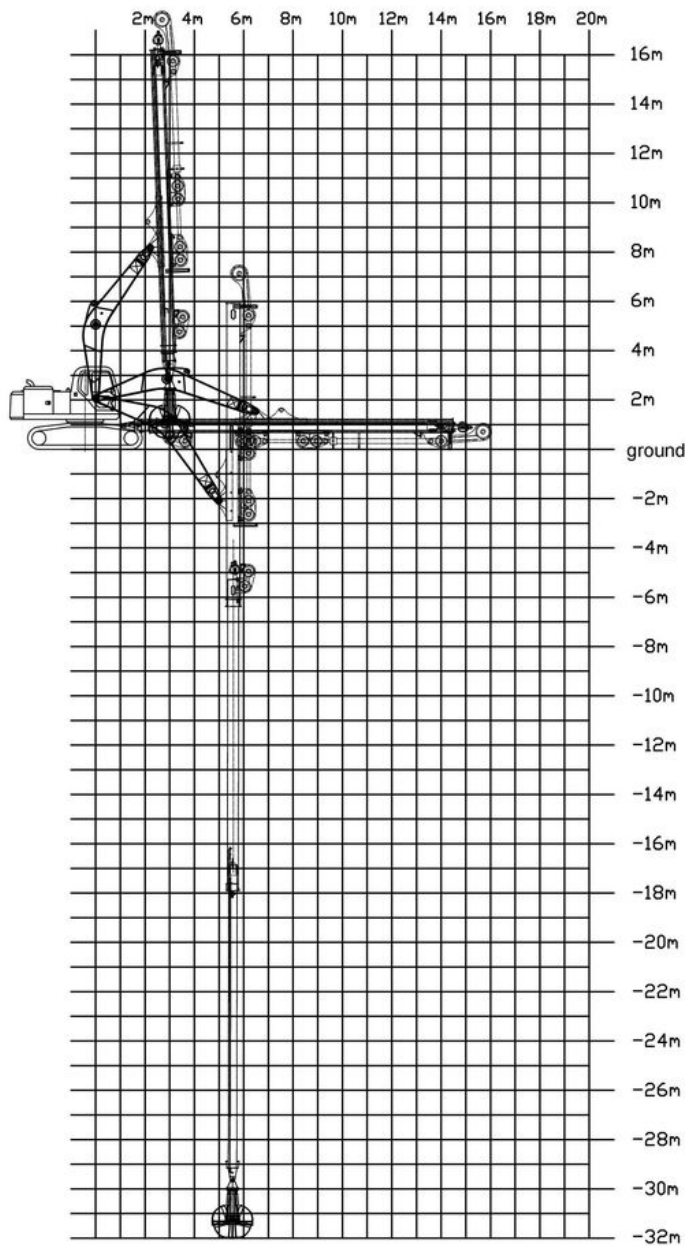
Excavator teledipper BS900E Lighter Stronger Excavator Clamshell Bucket Orange Peel Grapple

The introduction of Excavator Telescopic Boom Telescopic Arm:

Excavator Long Reach Boom And Telescopic Arm can bear huge stress and work high effectively. Telescopic arm for sale's pulley and bearings are enlarged which has larger width larger diameter.

digging depth of telescopic dipper arm(m)	clamshell bucket's bucket capacity(cbm)
16m	0.4cbm
18m	0.4cbm
20m	0.6cbm
25m	1.5cbm
30m	1.5cbm 2cbm
32m	2.2cbm 2.5cbm

Welcome to send your excavator model to us for introducing the suitable length of excavator clamshell telescopic boom.



Some pictures of excavator dipper arm:

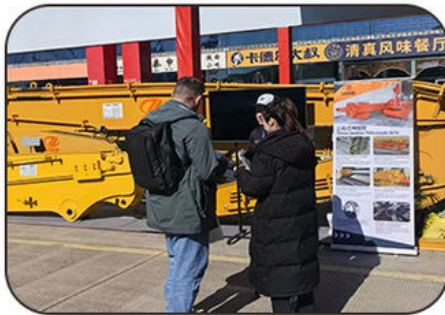




Professional and Experienced production process of excavator clamshell telescopic arm:



Experienced Staffs:





Any interest, welcome to contact Aria~



Jiangmen Kaiping Zhonghe Machinery Manufacturing Co., Ltd



+86 13822325403



aria@excavatorboomarm.com



excavatorlongarm.com

9 Huancui West Road, Cuishanhu New Area, Kaiping City, Guangdong Province, China