

Telescopic Arm For Excavator Digging Deeper Material BS900E Lighter Stronger

Our Product Introduction

for more products please visit us on excavatorlongarm.com

Basic Information

- Place of Origin: Guangdong Province, China
- Brand Name: Kaiping Zhonghe Machinery
- Certification: Patents, ISO, CE
- Model Number: SSB011
- Minimum Order Quantity: 1 piece / set
- Price: USD 200.00-USD8000.00
- Packaging Details: Bubble / wooden cases
- Delivery Time: 21 days
- Payment Terms: T/T, L/C, or others as you request
- Supply Ability: 5 sets per week



Product Specification

- Maximum Reach: 12m 18m 20m 31m 32m
- Welding: Premium
- Condition: Brand New
- Type: Digging Deeper
- Material: BS900E, Lighter And Stronger
- Bucket Capacity: 2m3, 2.2m3
- Warranty: 6 Months
- Number Of Sections: 3 Sections
- Highlight: Telescopic Arm For Excavator, BS900E Telescopic Dipper Arm, Strong Telescopic Dipper Arm



More Images



Product Description

Excavator Teledipper Excavator Telescopic Boom Telescopic Arm for digging deeper

Introduction of telescopic arm for sale:

Excavator clamshell telescopic boom is a versatility tool which is suitable for various working condition. Excavator dipper arm reach

18m 20m 30m 32m digging depth. Excavator clamshell telescopic arm is wire rope type and hydraulic cylinder. Telescopic arm with clamshell bucket is high effective and with longer life-span. Excavator boom dipper arm with orange peel grapple, the capacity reach 1m³, 1.2m³, 1.5m³, 1.8m³, 2m³. Its suitable for digging gravel, stone, etc.



Some specs of one set hyundai sliding dipper arm :

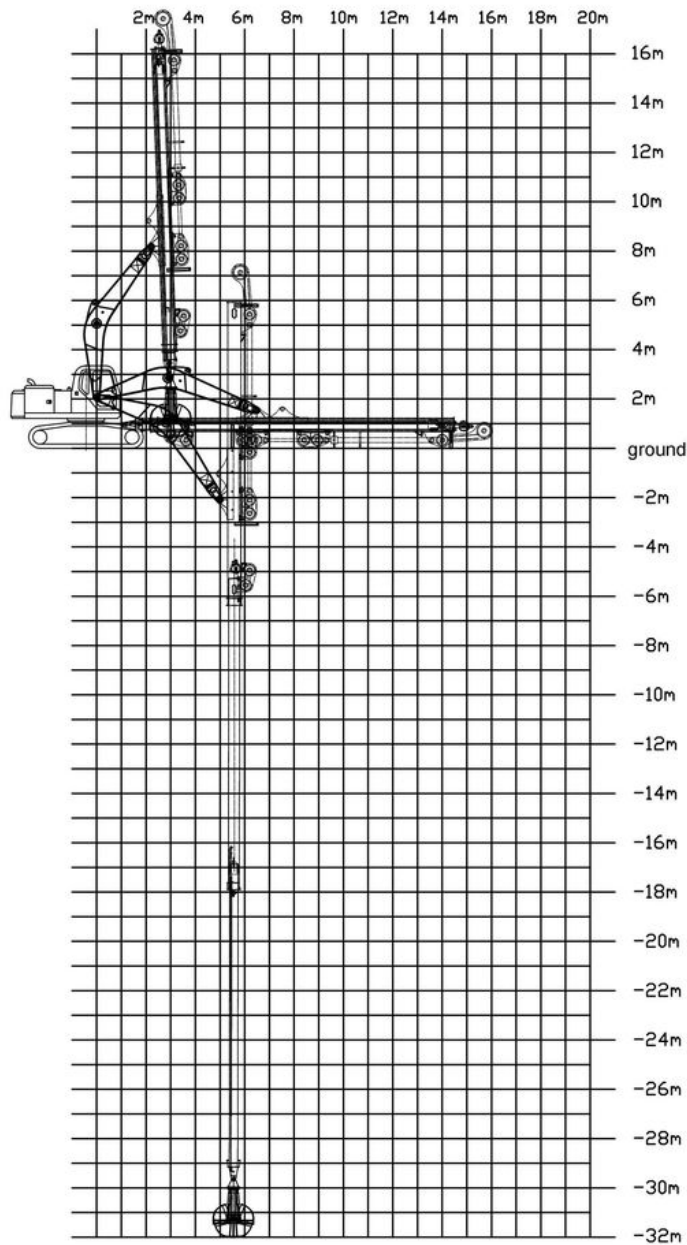
Length of excavator long reach telescopic boom(m)	orange peel grapple's bucket capacity(cbm)
16m	0.4cbm
18m	0.4cbm

20m	0.6cbm
25m	1.5cbm
30m	1.5cbm 2cbm
32m	2.2cbm 2.5cbm

Welcome to send your excavator model to us. Suitable length of telescopic boom for excavator will be recommended according to the excavator model.







Production Process of one set of telescopic boom for excavator:

Premium material of excavator clamshell telescopic boom: lighter and stronger BS900E.

* Welding of telescopic arm telescopic boom arm: the welding is premium. Every welding bead will be tested fully before sending to clients. Jingqiao welding wire and

* Premium production process. The telescopic boom excavator will be put on the large floor-standing double-sided boring machine.

The installation sizes will be suitable and install on the excavator suitably.

Professional and Experienced :



Full Tests---Every Procedure is under strict supervision 每道工序都是在严格监督下进行



Assembly inspection 安装检测



Weld flaw detection

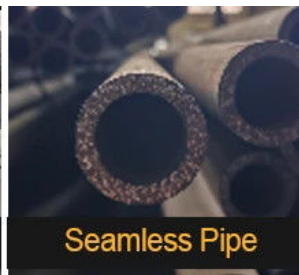
Make sure premium welding and not easy cracking

焊道探伤检测--确保优质的焊道和不容易开裂

Regular Testing 常规检测



Certified Steel



Seamless Pipe

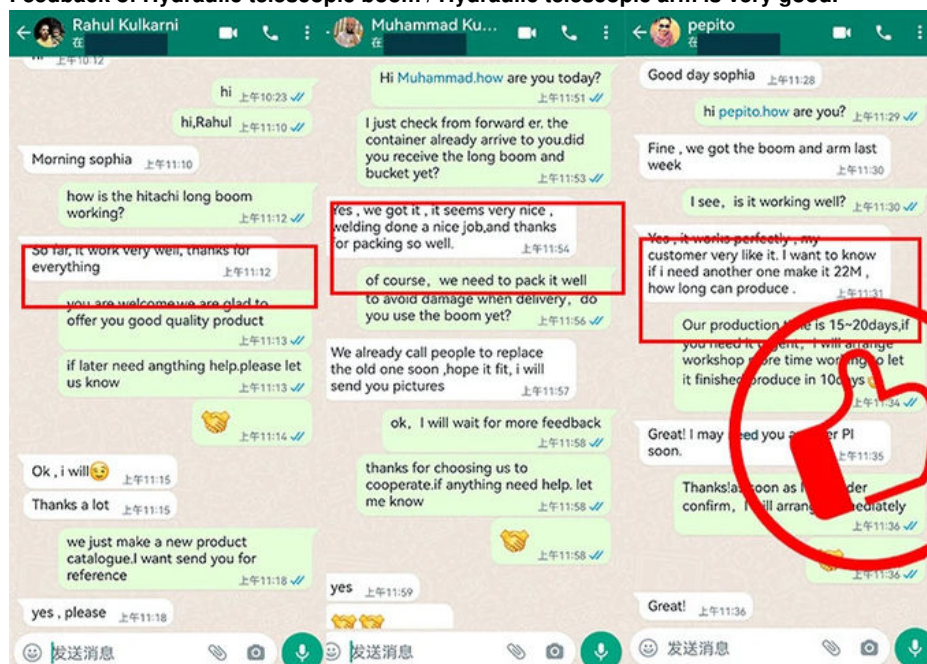


40MuCr Pins



Graphite Sleeve

Feedback of Hydraulic telescopic boom / Hydraulic telescopic arm is very good.





Established in 2018, Kaiping Zhonghe Machinery is a combination of manufacturing and trading. Our products, including excavator long reach booms, demolition arms, 2-3 sections telescopic arms, tunnel arms, standard/rock buckets, grapples, and rippers, have been selling well in more than 40 countries and areas.

We are located in Guangdong Province, China. A 18000 m² 50 welding workers with over 7 years experience, 30 senior designers, and a high-tech R&D team (10+ years on customization, 100+ technical patents), strict production system (6+ years quality control and cost control) and warm-hearted service team. Our annual output of various types of excavator boom arms can reach up to 600 sets.

We strive to uphold our core principles of "Merit Quality, Sincerity Management, and Customer Satisfaction".

Any interest, welcome to contact~



Jiangmen Kaiping Zhonghe Machinery Manufacturing Co., Ltd



+86 13822325403



aria@excavatorboomarm.com



excavatorlongarm.com

9 Huancui West Road, Cuishanhu New Area, Kaiping City, Guangdong Province, China