



## Two Section Telescopic Boom For Excavator / Excavator Extendable Boom Arm

Our Product Introduction

for more products please visit us on excavatorlongarm.com

### Basic Information

- Place of Origin: China
- Brand Name: ZH
- Certification: CE
- Model Number: JCB001
- Minimum Order Quantity: 1 SET
- Price: \$6000/set
- Packaging Details: Stretch film packaging
- Delivery Time: 20-30 working day
- Payment Terms: T/T
- Supply Ability: 600

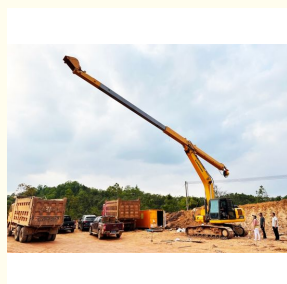


### Product Specification

- Condition: New, 100% new, New Telescopic Arm
- Warranty: 6 Months
- After-sales Service Provided: Online Support, Video Technical Support
- Bucket Capacity: 0.9m<sup>3</sup>, 0.4-0.5CBM, 0.2-6m<sup>3</sup>
- Machine Weight: 6-36T
- Color: Customer's Request
- Application: Crawler Excavator
- Material: Q355+LG700
- Type: Two-section Telescopic Arm
- Brand: Zhonghe
- Highlight: **Two Section Telescopic Boom, Excavator Extendable Boom Arm, Extendable Boom Arm**



### More Images



## two-section telescopic boom for excavator excavator extendable boom arm



### What is an excavator telescopic arm

A telescopic excavator arm includes a fixed section, a sliding mechanism, a steel cable, and a telescopic cylinder. By adjusting the sliding components, the reach and excavation depth can be tailored to specific needs. Often paired with a bucket, it is ideal for deep excavation applications such as soil, sand, and coal removal.

The two-section boom is made from LG700 for maximum durability, with Q355B used for structural balance. Unique features:

High-powered 22-ton bucket cylinder

Reinforced reel with larger spring plates

Multi-layer support at bearing points

LG700 steel box construction for improved strength

Reinforced pivot end for enhanced excavation performance



Any details, pls  
contact Ada!!!

My Whatsapp/Tel:  
+86 15322105263

### Zhonghe Machinery Two-section Telescopic Arm

1. The telescopic cylinder adopts double oil seals, and the built-in slider reduces the vibration of the cylinder, avoids sagging due to gravity, improves the service life of the cylinder and reduces failures.
2. Bucket cylinder hose design avoids oil leakage caused by hose vibration, and the hose can be replaced without dismantling the arm, improving its service life.
3. Four-layer steel wire high pressure hose, more durable.
4. The exposed bucket cylinder can be replaced without disassembling arm, which is convenient for maintenance.

## Two-section telescopic arm



1. Made of BS700 or Q690D material, offering a lighter weight and lower load on the main machine.
2. External maintenance access for the boom allows for telescopic cylinder replacement without disassembling the arm.
3. Optimized front design for carrying larger buckets and generating greater digging force.
4. Dual internal piping design prevents oil leakage from vibration, simplifies pipe replacement, and enables all components to be replaced without removing the boom.



### What are the advantages of our telescopic arm?

**Durable & Lightweight Build** – Designed with **high-strength steel**, reducing weight without compromising toughness.

**Increased Digging Range** – Our design allows for an **extra 20 cm depth** over standard models.

**Stable Hydraulic Cylinder** – The **double-slider structure** reduces shaking, extending component longevity.

**Reinforced Hose Design** – A **double-layer casing** minimizes vibrations and potential damage.

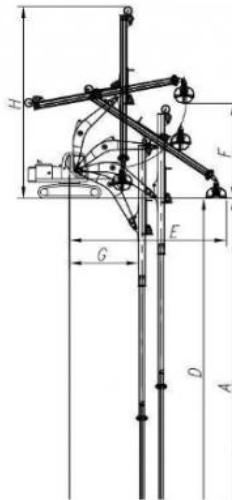
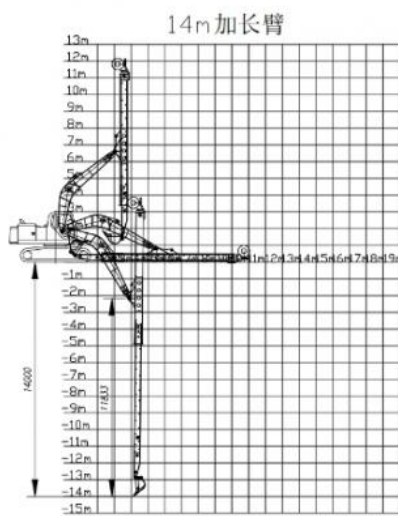
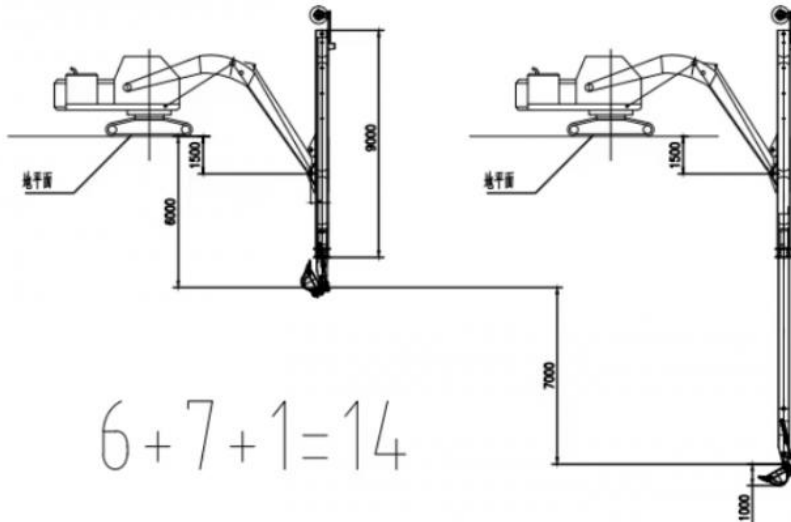
**Simplified Component Replacement** – With an **external bucket cylinder**, repairs are fast and efficient.

### Two Section Telescopic Arm Configuration

1. **A set of telescopic arm**
2. **Eight high-pressure hoses**
3. **Nine pins**
4. **A standard bucket**
5. **A two-way foot switch**
6. **A bucket cylinder**

## 7. A set Linkage

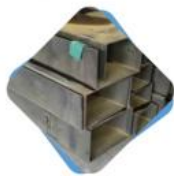
### General Arrangement Drawing



| 25M-伸缩臂 |             |
|---------|-------------|
| A.      | 最大垂直挖掘深度    |
| B.      | 最大垂直深度挖掘半径  |
| C.      | 最大垂直挖掘工作半径  |
| D.      | 最大垂直挖掘深度    |
| E.      | 最大垂直挖掘工作半径  |
| F.      | 最大卸土高度      |
| G.      | 最小回转半径      |
| H.      | 最小回转半径是整机高度 |

| Excavator (ton) | Max Depth (mm) | Effective Length (mm) | Bucket Capacity (cbm) | Cylinder (ton) | Cylinder (ton) |
|-----------------|----------------|-----------------------|-----------------------|----------------|----------------|
| 12-15           | 10000          | 8170                  | 0.2                   | 6              | 0              |
| 20-25           | 12000          | 8700                  | 0.4                   | 20             | 0              |
| 20-25           | 14000          | 10680                 | 0.4                   | 20             | 2 ton          |
| 30-35           | 16000          | 12080                 | 0.6-0.8               | 22             | 1 ton          |

### Advantages of telescopic arm



01

Using LG700/785 material, the overall plate strength is stronger and the arm is lighter, reducing the load of the excavator.



02

The unique design of the internally designed long cylinder makes the vibration of the cylinder a thing of the past. We add a slider inside the cylinder to prevent the cylinder from shaking when it expands and contracts. This not only reduces the failure rate of the cylinder, but also reduces the vibration of the pipeline.



03

For telescopic iron pipes, we adopt a double-layer iron pipe design to reduce pipeline oil leakage caused by pipeline vibration and reduce the failure rate.



04

The bucket cylinder is placed outside the arm, and the cylinder and connecting rod assembly are replaced as a whole. Our maintenance is more convenient, and the bucket retraction angle for excavation is better.



**Application of Two-section Telescopic Arm**

**Foundation & Deep Pit Excavation** – Designed for jobs requiring extended reach.

**Demolition of Large Structures** – Provides controlled removal of tall buildings.

**Operations in Narrow Spaces** – Well-suited for confined construction sites.

**Dredging & Land Reclamation** – Plays a key role in waterway restoration projects.

**Handling Construction Waste** – Efficiently moves sand, rocks, and waste materials.

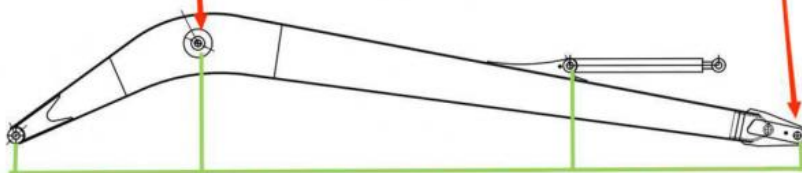
**Forestry & Farming Applications** – Assists in tree removal and large-scale farm transport.

**High precision machine of Zhonghe Machinery Manufacturers**

## Double-sided boring lathe



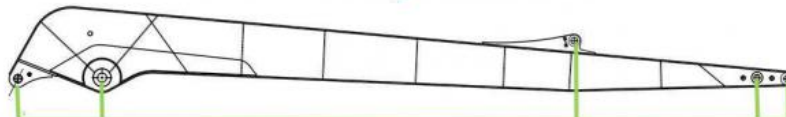
After the excavator boom and arm are assembled, the pins on the boom are drilled to ensure that the pins on the boom are parallel to each other and the cross section of the pin hole is perpendicular to the pin. The double-sided boring machine of the boom makes the hole position more accurate and the quality higher.



Make sure the cross section of the pin hole is perpendicular to the shaft.



Make sure the axis is parallel to the axis



Make sure the cross section of the pin hole is perpendicular to the shaft



Make sure the axis is parallel to the axis

### Large, floor-mounted double-sided boring and milling lathe:

**Increased Precision and Consistency:** The double-sided boring and milling lathe enhances operational accuracy and consistency.

**Post-Welding Process:** After welding, the machine bores through the hole, ensuring the parallelism and verticality of the

shaft.

**Main Responsibility:** This machine is primarily used for post-welding boring of large and small arms and buckets to ensure accuracy.

**Simultaneous Boring:** The double-sided boring lathe performs boring on both sides at the same time, guaranteeing even accuracy.

### About Zhonghe Machinery Company Profile:

Kaiping Zhonghe Machinery Co., Ltd., founded in 2018, is an industry leader in custom excavator boom arms and attachments. Located in Kaiping, Guangdong, our 21,000m<sup>3</sup> steel-structured workshop is fully equipped with high-precision machinery and a skilled team of 100+ professionals, including 50 welders with over seven years of experience and 30 senior designers. Our innovative R&D team, boasting 10+ years of expertise and 100+ patents, drives our product development. With rigorous quality and cost controls, we manufacture up to 800 boom arms per year, ensuring excellent performance and durability.



### CE certification & Utility model patent certificates



Our products have been sold to more than 60 countries, and our transportation methods include sea transportation, land transportation, and air transportation. Our packaging is wooden box packaging or stretch film packaging. The goods will be packed before shipment and then loaded into the container to ensure the safety of the goods.

### Packaging & Shipping



## FAQ(Some frequently asked questions):

### Q: Are you a manufacturer?

A: Zhonghe machinery offered a wide range of attachment parts for excavators and dozers. Such as long reach arm, demolition arm, telescopic arm, standard bucket, rock bucket, cleaning bucket, tilting bucket, etc. We know that the perfect combination of high-quality cast steel products and a moderate price is the key to the success.

### Q: Is the length of the telescopic arm the total length or the digging depth?

A: The length of a two-stage telescopic arm refers to the digging depth. For example, a 14-meter telescopic arm means that the maximum digging depth is 14 meters, so it is called a 14-meter telescopic arm. The actual arm length is not only 14 meters.

### Q: What material is the telescopic arm made of?

A: The arm tube of the telescopic arm is made of a690 or HG785 material, and the material of other parts is a355B material.

### Q: What are your terms of payment?

A: We prefer T/T (50/50) through Ali Credit Insurance as a trial order.

### Q: Are you always delivered on time?

A: We can't promise about the sea freight but what we can do is shorten our lead time while keeping the same quality level. So there will not be any problem even if the sea freight is delayed for a couple of days.

Any information, pls contact Ada!

this is my contact way directly

Ada W/A: +86 15322105263

Mail: abby@excavatorboomarm.com



**Jiangmen Kaiping Zhonghe Machinery Manufacturing Co., Ltd**

+86 13822325403

aria@excavatorlongarm.com

excavatorlongarm.com

9 Huancui West Road, Cuishanhu New Area, Kaiping City, Guangdong Province, China