



Versatile Powerful Two Section Extension Boom Double Stage Telescopic Arm

Our Product Introduction

for more products please visit us on excavatorlongarm.com

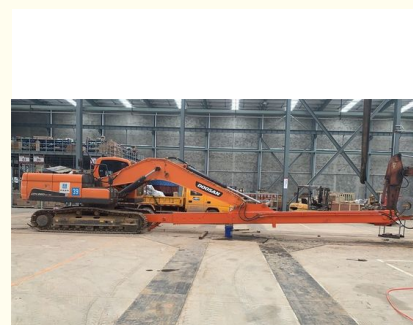
Basic Information

- Place of Origin: China
- Brand Name: ZH
- Certification: CE
- Model Number: JCB001
- Minimum Order Quantity: 1 SET
- Price: \$6300/set
- Packaging Details: Stretch film packaging
- Delivery Time: 20-30 working day
- Payment Terms: T/T
- Supply Ability: 600



Product Specification

- Condition: New, 100% new, New Telescopic Arm
- Warranty: 6 Months
- After-sales Service Provided: Online Support, Video Technical Support
- Bucket Capacity: 0.9m³, 0.4-0.5CBM, 0.2-6m³
- Machine Weight: 6-36T
- Color: Customer's Request
- Application: Crawler Excavator
- Material: Q355+LG700
- Type: Two-section Telescopic Arm
- Brand: Zhonghe
- Highlight: **Powerful Telescopic Arm,
Two section Telescopic Arm,
Versatile Telescopic Arm**



More Images



Product Description

Versatile & Powerful Two-section extension boom Double-stage telescopic arm



Any information, pls contact Sophia!

this is my contact way directly

Sophia W/A: +86 18127591702

Mail: sophia@excavatorboomarm.com

What is an excavator telescopic arm

A telescopic arm for excavators consists of a stationary frame, a sliding mechanism, a wire rope, and a telescopic hydraulic cylinder. The excavation depth and operational radius can be adjusted by modifying the number of sliding sections. It is often equipped with a bucket for digging deep pits and handling materials like soil, sand, and coal.

The two-stage telescopic boom utilizes LG700 steel, while Q355B is used for other structural components to ensure durability and reduced weight. Features include:

- 22-ton heavy-duty bucket cylinder
- Enlarged reel with reinforced spring plates
- Multi-layered reinforcement at the bearing points
- LG700 high-strength steel box structure
- A strengthened pivot end for improved resistance to excavation forces



Any details, pls
contact Ada!!!

My Whatsapp/Tel:
+86 15322105263



Zhonghe Machinery Two-section Telescopic Arm

1. The telescopic cylinder adopts double oil seals, and the built-in slider reduces the vibration of the cylinder, avoids sagging due to gravity, improves the service life of the cylinder and reduces failures.
2. Bucket cylinder hose design avoids oil leakage caused by hose vibration, and the hose can be replaced without dismantling the arm, improving its service life.
3. Four-layer steel wire high pressure hose, more durable.
4. The exposed bucket cylinder can be replaced without disassembling arm, which is convenient for maintenance.

Two-section telescopic arm



1. Made of BS700 or Q690D material, offering a lighter weight and lower load on the main machine.
2. External maintenance access for the boom allows for telescopic cylinder replacement without disassembling the arm.
3. Optimized front design for carrying larger buckets and generating greater digging force.
4. Dual internal piping design prevents oil leakage from vibration, simplifies pipe replacement, and enables all components to be replaced without removing the boom.



What are the advantages of our telescopic arm?

High-Strength, Low-Weight Build – We use reinforced steel to improve durability while reducing excavator stress.

Enhanced Depth Capability – Our arm reaches **about 20 cm deeper** than other brands of similar length.

Advanced Cylinder Support – The **double-slider mechanism** ensures better stability, reducing vibrations and prolonging cylinder life.

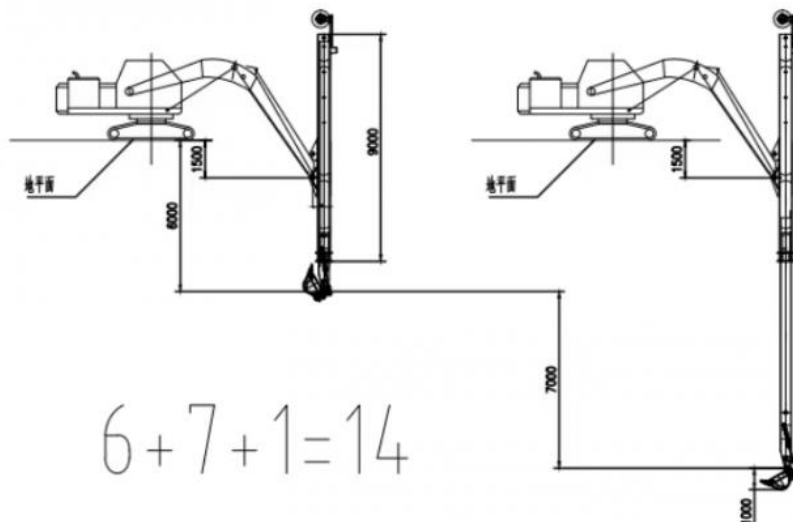
Upgraded Hose System – A **protective dual-layer casing** prevents excessive movement, making hose replacements simpler.

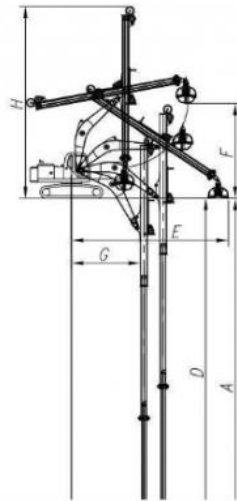
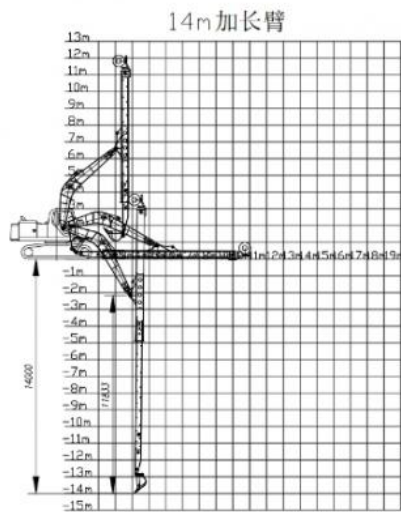
Effortless Servicing – The **external bucket cylinder** placement ensures hassle-free maintenance and part replacement.

Two Section Telescopic Arm Configuration

1. A set of telescopic arm
2. Eight high-pressure hoses
3. Nine pins
4. A standard bucket
5. A two-way foot switch
6. A bucket cylinder
7. A set Linkage

General Arrangement Drawing

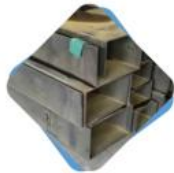




| 25M-伸缩臂 | |
|---------|-------------|
| A. | 最大垂直挖掘深度 |
| B. | 最大垂直深度挖掘半径 |
| C. | 最大垂直挖掘工作半径 |
| D. | 最大垂直挖掘深度 |
| E. | 最大垂直挖掘工作半径 |
| F. | 最大卸土高度 |
| G. | 最小回转半径 |
| H. | 最小回转半径是整机高度 |

| Excavator (ton) | Max Depth (mm) | Effective Length (mm) | Bucket Capacity (cbm) | Cylinder (ton) | Cylinder (ton) |
|-----------------|----------------|-----------------------|-----------------------|----------------|----------------|
| 12-15 | 10000 | 8170 | 0.2 | 6 | 0 |
| 20-25 | 12000 | 8700 | 0.4 | 20 | 0 |
| 20-25 | 14000 | 10680 | 0.4 | 20 | 2 ton |
| 30-35 | 16000 | 12080 | 0.6-0.8 | 22 | 1 ton |

Advantages of telescopic arm



01

Using LG700/785 material, the overall plate strength is stronger and the arm is lighter, reducing the load of the excavator.



02

The unique design of the internally designed long cylinder makes the vibration of the cylinder a thing of the past. We add a slider inside the cylinder to prevent the cylinder from shaking when it expands and contracts. This not only reduces the failure rate of the cylinder, but also reduces the vibration of the pipeline.



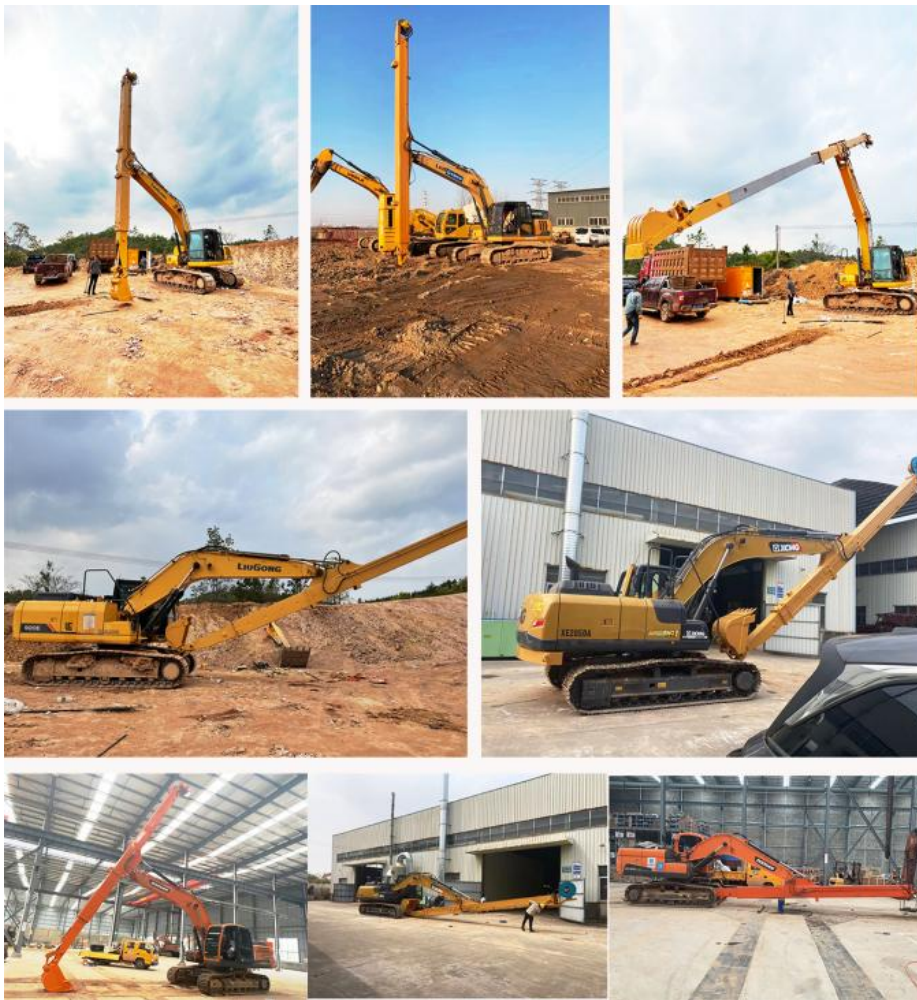
03

For telescopic iron pipes, we adopt a double-layer iron pipe design to reduce pipeline oil leakage caused by pipeline vibration and reduce the failure rate.



04

The bucket cylinder is placed outside the arm, and the cylinder and connecting rod assembly are replaced as a whole. Our maintenance is more convenient, and the bucket retraction angle for excavation is better.



Application of Two-section Telescopic Arm

Excavating at Greater Depths – Enables deep trenching and foundation digging beyond standard booms.

Demolition at Heights – Ideal for safely dismantling high-rise structures.

Operations in Restricted Areas – Useful for sites with maneuverability constraints, such as under bridges.

Dredging & Sediment Removal – Extends reach for clearing waterways and improving drainage.

Handling Heavy Loads – Transfers bulk materials like coal, gravel, and construction debris.

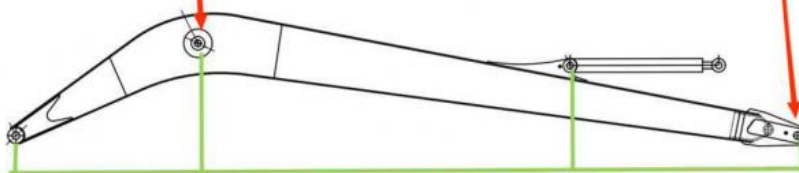
Timber & Agricultural Use – Supports forestry applications and large-scale farm operations.

High precision machine of Zhonghe Machinery Manufacturers

Double-sided boring lathe



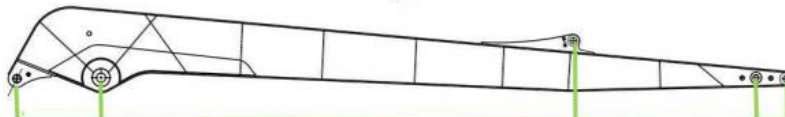
After the excavator boom and arm are assembled, the pins on the boom are drilled to ensure that the pins on the boom are parallel to each other and the cross section of the pin hole is perpendicular to the pin. The double-sided boring machine of the boom makes the hole position more accurate and the quality higher.



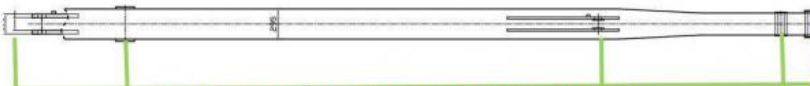
Make sure the cross section of the pin hole is perpendicular to the shaft.



Make sure the axis is parallel to the axis



Make sure the cross section of the pin hole is perpendicular to the shaft



Make sure the axis is parallel to the axis

Large, floor-mounted double-sided boring and milling lathe:

Increased Precision and Consistency: The double-sided boring and milling lathe enhances operational accuracy and consistency.

Post-Welding Process: After welding, the machine bores through the hole, ensuring the parallelism and verticality of the

shaft.

Main Responsibility: This machine is primarily used for post-welding boring of large and small arms and buckets to ensure accuracy.

Simultaneous Boring: The double-sided boring lathe performs boring on both sides at the same time, guaranteeing even accuracy.

About Zhonghe Machinery Company Profile:

Kaiping Zhonghe Machinery Co., Ltd., established in 2018, is an innovative manufacturer and trading enterprise specializing in custom excavator boom arms and attachments. Located in Cuishanhu New District, Kaiping City, Jiangmen, Guangdong, we operate a **21,000m³ steel-structured workshop** equipped with high-precision machinery. Our team consists of **100+ skilled technicians**, including **50 expert welders** with over seven years of experience, **30 senior designers**, and a **dedicated R&D team** with **10+ years of expertise** and **100+ technical patents**. With a strict **quality and cost control system**, we produce up to **800 excavator boom arms annually**, delivering reliable products and excellent service.



CE certification & Utility model patent certificates



Our products have been sold to more than 60 countries, and our transportation methods include sea transportation, land transportation, and air transportation. Our packaging is wooden box packaging or stretch film packaging. The goods will be packed before shipment and then loaded into the container to ensure the safety of the goods.

Packaging & Shipping



FAQ(Some frequently asked questions):

Q: Are you a manufacturer?

A: Zhonghe machinery offered a wide range of attachment parts for excavators and dozers. Such as long reach arm, demolition arm, telescopic arm, standard bucket, rock bucket, cleaning bucket, tilting bucket, etc. We know that the perfect combination of high-quality cast steel products and a moderate price is the key to the success.

Q: Is the length of the telescopic arm the total length or the digging depth?

A: The length of a two-stage telescopic arm refers to the digging depth. For example, a 14-meter telescopic arm means that the maximum digging depth is 14 meters, so it is called a 14-meter telescopic arm. The actual arm length is not only 14 meters.

Q: What material is the telescopic arm made of?

A: The arm tube of the telescopic arm is made of a690 or HG785 material, and the material of other parts is a355B material.

Q: What are your terms of payment?

A: We prefer T/T (50/50) through Ali Credit Insurance as a trial order.

Q: Are you always delivered on time?

A: We can't promise about the sea freight but what we can do is shorten our lead time while keeping the same quality level. So there will not be any problem even if the sea freight is delayed for a couple of days.

Any information, pls contact Sophia!

this is my contact way directly

Sophia W/A: +86 18127591702

Mail: sophia@excavatorboomarm.com



Jiangmen Kaiping Zhonghe Machinery Manufacturing Co., Ltd



+86 13822325403



aria@excavatorboomarm.com



excavatorlongarm.com

9 Huancui West Road, Cuishanhu New Area, Kaiping City, Guangdong Province, China