



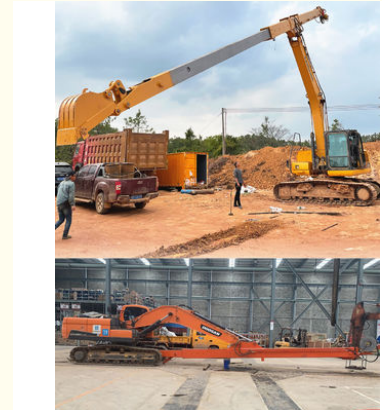
## Heavy Duty Two Section Telescopic Arm Excavator Telescopic Boom For Construction

Our Product Introduction

for more products please visit us on excavatorlongarm.com

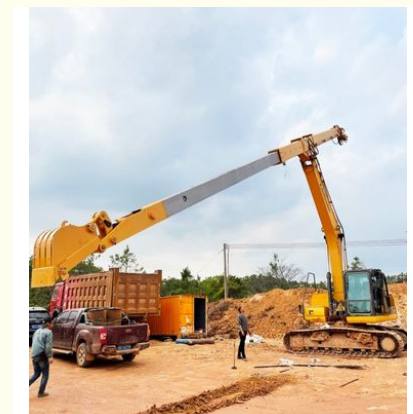
### Basic Information

- Place of Origin: China
- Brand Name: ZH
- Certification: CE
- Model Number: JCB001
- Minimum Order Quantity: 1 SET
- Price: \$6285/set
- Packaging Details: Stretch film packaging
- Delivery Time: 20-30 working day
- Payment Terms: T/T
- Supply Ability: 600

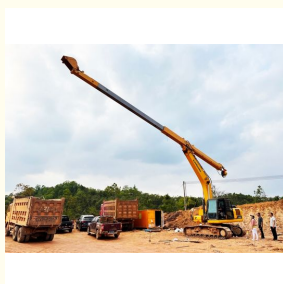


### Product Specification

- Condition: New, 100% new, New Telescopic Arm
- Warranty: 6 Months
- After-sales Service Provided: Online Support, Video Technical Support
- Bucket Capacity: 0.9m<sup>3</sup>, 0.4-0.5CBM, 0.2-6m<sup>3</sup>
- Machine Weight: 6-36T
- Color: Customer's Request
- Application: Crawler Excavator
- Material: Q355+LG700
- Type: Two-section Telescopic Arm
- Brand: Zhonghe
- Highlight: Heavy Duty Excavator Telescopic Arm, Construction Excavator Telescopic Arm, Two Section Excavator Telescopic Arm



### More Images



## Product Description

### Heavy-duty Two-section Telescopic arm Excavator Telescopic Boom for construction

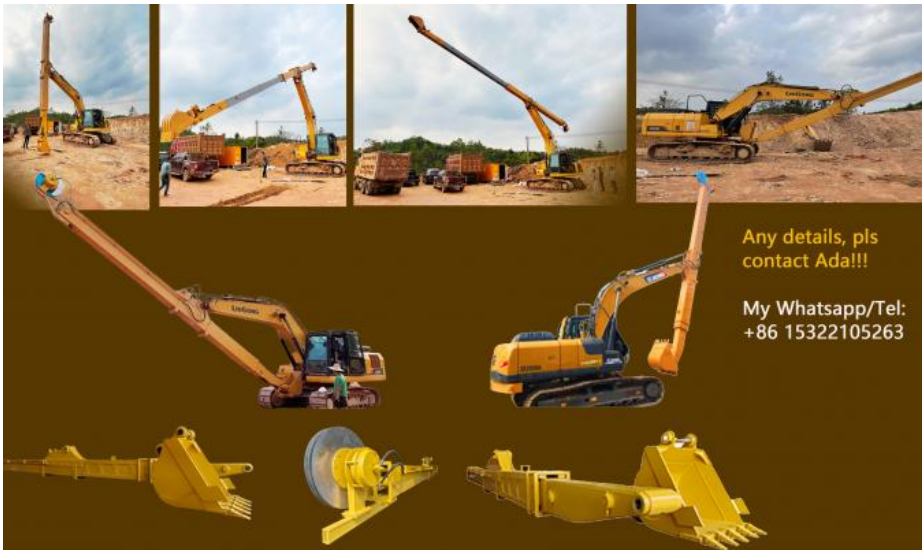


#### What is an excavator telescopic arm

This product mainly consists of a **fixed body**, **sliding body**, **steel wire rope** and a **telescopic cylinder**. By changing the number of sliding bodies, an ideal working radius and vertical excavation range can be achieved. Generally used in combination with a bucket, it can complete deep pit excavation tasks, such as **grabbing soil, sand or coal**.

The two-section telescopic boom is made of **LG700**, and other parts are made of **Q355B**, which is **lighter and more durable**. We use **6mm thickness**.

\* 22-ton strong bucket cylinder \* The reel adopts enlarged spring piece \* Bearing part with multi-layer reinforced \* The box is made of LG700 high strength material \* The pivot end is reinforced with multiple layers to withstand greater excavation forces.



#### Zhonghe Machinery Two-section Telescopic Arm

1. The telescopic cylinder adopts double oil seals, and the built-in slider reduces the vibration of the cylinder, avoids sagging due to gravity, improves the service life of the cylinder and reduces failures.
2. Bucket cylinder hose design avoids oil leakage caused by hose vibration, and the hose can be replaced without dismantling the arm, improving its service life.
3. Four-layer steel wire high pressure hose, more durable.
4. The exposed bucket cylinder can be replaced without disassembling arm, which is convenient for maintenance.





## Two-section telescopic arm

1. Made of BS700 or Q690D material, offering a lighter weight and lower load on the main machine.
2. External maintenance access for the boom allows for telescopic cylinder replacement without disassembling the arm.
3. Optimized front design for carrying larger buckets and generating greater digging force.
4. Dual internal piping design prevents oil leakage from vibration, simplifies pipe replacement, and enables all components to be replaced without removing the boom.



## What are the advantages of our telescopic arm?

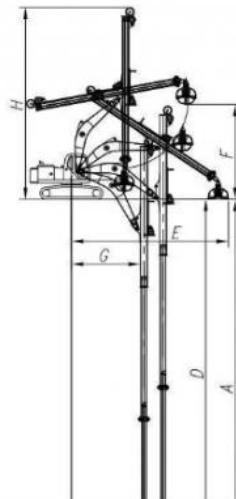
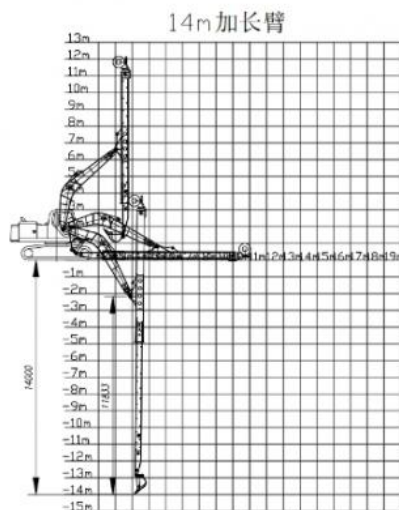
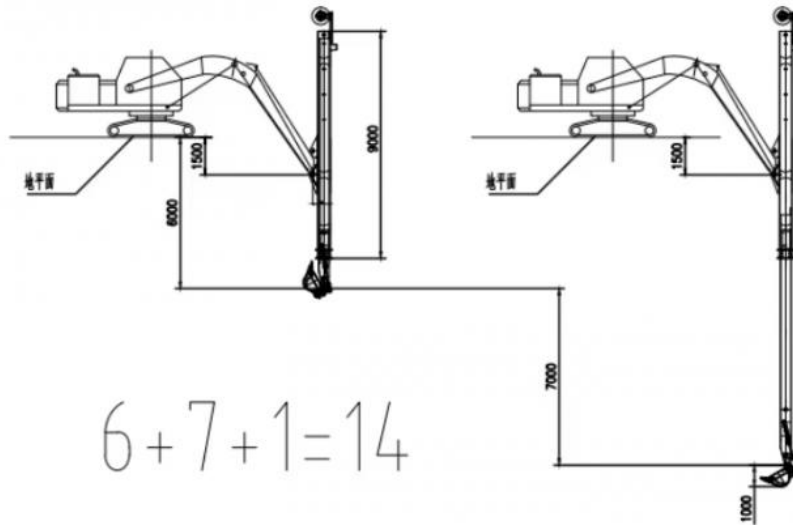
1. We use high-strength plates, which are light and durable, and have low excavator load.
2. For arms of the same length, our arm's digging depth is about 20 cm deeper than that of other manufacturers.
3. The double slider design of the telescopic cylinder reduces the vibration of the cylinder and provides support for the cylinder, reducing the failure rate of the cylinder.
4. The hose of the bucket cylinder adopts a double-layer casing design, making pipeline vibration a thing of the past, and it is easy to replace the hose.
5. The bucket cylinder is exposed outside the barrel, which is convenient for replacement and maintenance of the bucket cylinder.

## Two Section Telescopic Arm Configuration

1. A set of telescopic arm
2. Eight high-pressure hoses

3. Nine pins
4. A standard bucket
5. A two-way foot switch
6. A bucket cylinder
7. A set Linkage

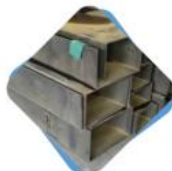
## General Arrangement Drawing



25M-伸縮臂	
A.	最大垂直挖掘深度
B.	最大垂直深度挖掘半径
C.	最大垂直挖掘工作半径
D.	最大垂直挖掘深度
E.	最大垂直挖掘工作半径
F.	最大卸土高度
G.	最小回转半径
H.	最小回转半径是整机高度

Excavator (ton)	Max Depth (mm)	Effective Length (mm)	Bucket Capacity (cbm)	Cylinder (ton)	Cylinder (ton)
12-15	10000	8170	0.2	6	0
20-25	12000	8700	0.4	20	0
20-25	14000	10680	0.4	20	2 ton
30-35	16000	12080	0.6-0.8	22	1 ton

## Advantages of telescopic arm



01

Using LG700/785 material, the overall plate strength is stronger and the arm is lighter, reducing the load of the excavator.



02

The unique design of the internally designed long cylinder makes the vibration of the cylinder a thing of the past. We add a slider inside the cylinder to prevent the cylinder from shaking when it expands and contracts. This not only reduces the failure rate of the cylinder, but also reduces the vibration of the pipeline.



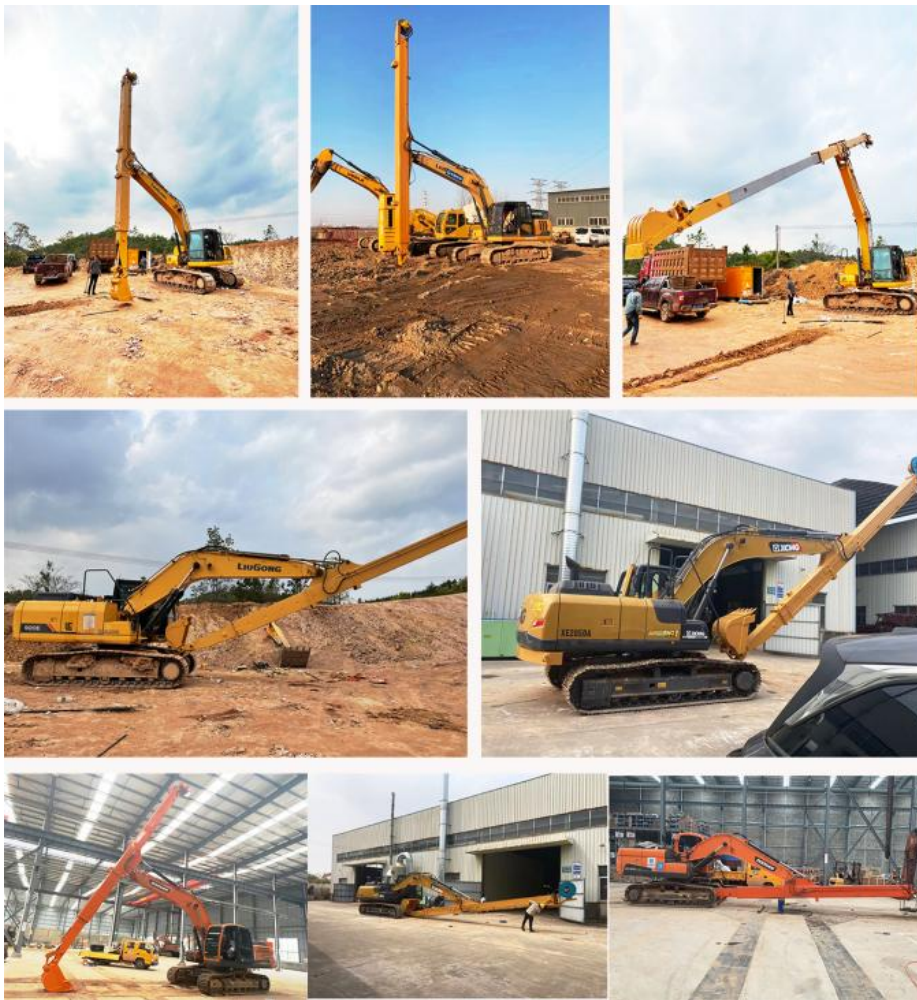
03

For telescopic iron pipes, we adopt a double-layer iron pipe design to reduce pipeline oil leakage caused by pipeline vibration and reduce the failure rate.



04

The bucket cylinder is placed outside the arm, and the cylinder and connecting rod assembly are replaced as a whole. Our maintenance is more convenient, and the bucket retraction angle for excavation is better.



### **Application of Two-section Telescopic Arm**

1. Deep Excavation: Ideal for digging deeper than standard arms can reach, such as in trenching, foundation work, and mining.
2. High-Reach Demolition: Useful in demolition projects where controlled dismantling of taller structures is necessary.
3. Confined Spaces: Helpful in areas with limited space for maneuvering, such as urban construction or work under bridges.
4. River and Canal Dredging: Extends the reach for dredging operations in rivers, canals, or ports, improving efficiency and safety.
5. Material Handling: Used in handling bulk materials like sand, gravel, or waste in transfer stations and recycling facilities.
6. Forestry and Agriculture: Sometimes applied in forestry for handling logs or in agriculture for tasks requiring a longer reach over uneven terrain.

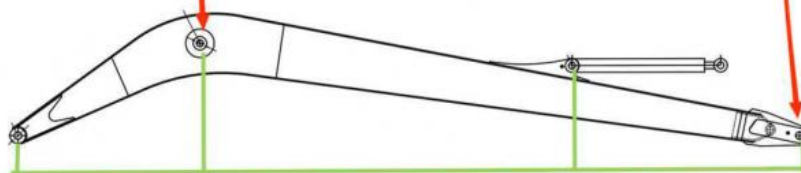
### **High precision machine of Zhonghe Machinery Manufacturers**



## Double-sided boring lathe



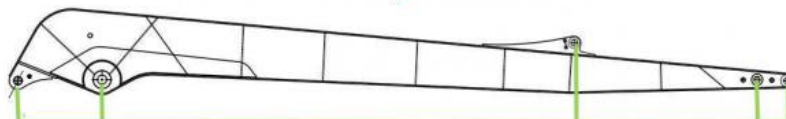
After the excavator boom and arm are assembled, the pins on the boom are drilled to ensure that the pins on the boom are parallel to each other and the cross section of the pin hole is perpendicular to the pin. The double-sided boring machine of the boom makes the hole position more accurate and the quality higher.



Make sure the cross section of the pin hole is perpendicular to the shaft.



Make sure the axis is parallel to the axis



Make sure the cross section of the pin hole is perpendicular to the shaft



Make sure the axis is parallel to the axis

### Large, floor-mounted double-sided boring and milling lathe:

**Increased Precision and Consistency:** The double-sided boring and milling lathe enhances operational accuracy and consistency.

**Post-Welding Process:** After welding, the machine bores through the hole, ensuring the parallelism and verticality of the

shaft.

**Main Responsibility:** This machine is primarily used for post-welding boring of large and small arms and buckets to ensure accuracy.

**Simultaneous Boring:** The double-sided boring lathe performs boring on both sides at the same time, guaranteeing even accuracy.

### About Zhonghe Machinery Company Profile:

Kaiping Zhonghe Machinery Co.,Ltd. established in 2018, it is a combination of manufacturing and trading, specializing in customizing different kinds of excavator boom arms and attachments. We are located in cuishanhu New District. Kaiping cityJiangmen City. Guangdong Province, China. We boast a 21000m3 steel structure workshop with a large number of high precision processing equipment and a strong and cohesive team of over 100 experienced technical staff. 50 welding workers with over 7 years experience. 30 senior designers, and a high-tech R&D team(10+ years on customization.100+technical patents), strict production system(6+ years quality control and cost control) and warm-hearted service team. Our annual output of various types of excavator boom arms can reach up to 800 sets.



### CE certification & Utility model patent certificates



Our products have been sold to more than 60 countries, and our transportation methods include sea transportation, land transportation, and air transportation. Our packaging is wooden box packaging or stretch film packaging. The goods will be packed before shipment and then loaded into the container to ensure the safety of the goods.

### Packaging & Shipping





## FAQ(Some frequently asked questions):

### Q: Are you a manufacturer?

A: Zhonghe machinery offered a wide range of attachment parts for excavators and dozers. Such as long reach arm, demolition arm, telescopic arm, standard bucket, rock bucket, cleaning bucket, tilting bucket, etc. We know that the perfect combination of high-quality cast steel products and a moderate price is the key to the success.

### Q: Is the length of the telescopic arm the total length or the digging depth?

A: The length of a two-stage telescopic arm refers to the digging depth. For example, a 14-meter telescopic arm means that the maximum digging depth is 14 meters, so it is called a 14-meter telescopic arm. The actual arm length is not only 14 meters.

### Q: What material is the telescopic arm made of?

A: The arm tube of the telescopic arm is made of a690 or HG785 material, and the material of other parts is a355B material.

### Q: What are your terms of payment?

A: We prefer T/T (50/50) through Ali Credit Insurance as a trial order.

### Q: Are you always delivered on time?

A: We can't promise about the sea freight but what we can do is shorten our lead time while keeping the same quality level. So there will not be any problem even if the sea freight is delayed for a couple of days.

Any information, pls contact Sophia!

this is my contact way directly

Sophia W/A: +86 18127591702

Mail: [sophia@excavatorboomarm.com](mailto:sophia@excavatorboomarm.com)



**Jiangmen Kaiping Zhonghe Machinery Manufacturing Co., Ltd**



+86 13822325403



[aria@excavatorboomarm.com](mailto:aria@excavatorboomarm.com)



[excavatorlongarm.com](http://excavatorlongarm.com)

9 Huancui West Road, Cuishanhu New Area, Kaiping City, Guangdong Province, China