



Heavy Duty Telescopic Boom Excavator With Orange Peel Grapple

Our Product Introduction

for more products please visit us on excavatorlongarm.com

Basic Information

- Place of Origin: China, Guangdong
- Brand Name: Kaiping Zhonghe Machinery
- Certification: Patents, ISO
- Model Number: TB0015
- Minimum Order Quantity: 1 piece / set
- Price: USD 188.00-USD10100.00
- Packaging Details: Bubble / wooden cases
- Delivery Time: 7 days-20 days
- Payment Terms: T/T, L/C, or others as you request
- Supply Ability: 4 sets per week

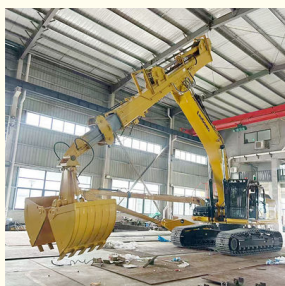


Product Specification

- Bucket Capacity: 0.6m³
- Tube Material: Premium BS900E
- Maximum Reach: 12m 14m 16m 20m 21m 22m 30m 32m
- Model: SSB078
- Warranty: 6 Months
- Counterweight: No Need To Add Counterweight
- Number Of Sections: 3 Sections
- Condition: Brand New
- Highlight: Heavy Duty Telescopic Boom Excavator,
Telescopic boom excavator,
Heavy Duty Telescopic arm Excavator



More Images



Telescopic Boom Excavator Telescopic Boom with clamshell bucket for digging deeper

Introduction of excavator telescopic arm:

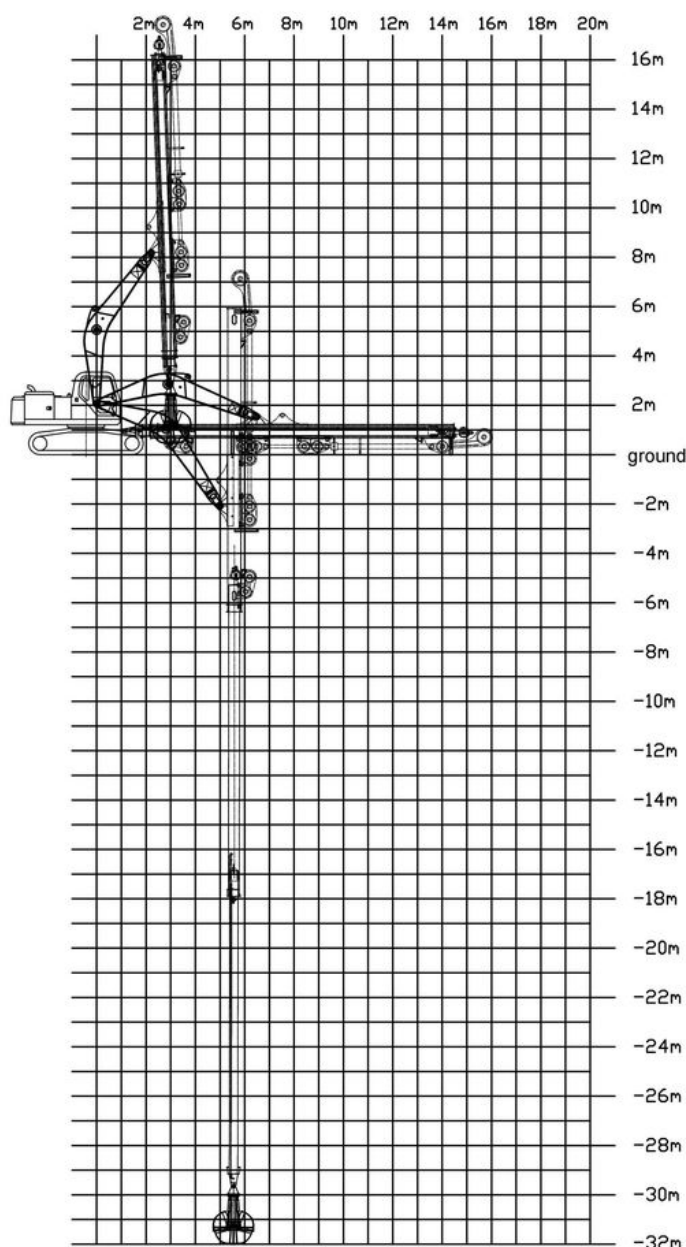
* Telescopic boom excavator with clamshell bucket is suitable for digging deeper. The digging depth can reach 18m 20m 30m 32m

Its suitable for digging house foundation.

* Excavator Telescopic Boom can carry a clamshell bucket which can grab silt, sand, soil. The clamshell bucket can be with-teeth or

without-teeth type. The front attachment can also be a orange peel grapple which can carry gravel.

* Excavator telescopic arm works high effectively(the material of tube is BS900E and we also provide customization service). BS900E material is lighter and stronger which is suitable on the telescopic arm.



Some specs of one set of telescopic excavator boom:

Length of telescopic dipper arm(m)	clamshell bucket's bucket capacity(cbm)
12m	0.6cbm
14m	0.4cbm
16m	0.4cbm
18m	0.4cbm
20m	0.6cbm
25m	1.5cbm
30m	1.5cbm 2cbm
32m	2.2cbm 2.5cbm
Kindly send your excavator model to us for checking the suitable length.	



Feedback of 18m three-section telescopic arm for Cat 320

Clients mentioned that the arm works very good.

High effective and save energy

Production Process of one set of telescopic arm excavator

- * High precision: the telescopic arm for excavator is processed on the Large floor-standing double-sided boring machine
- * The CNC cutting machine can lessen the deformation of the steel



Full Tests---Every Procedure is under strict supervision 每道工序都是在严格监督下进行



Assembly inspection 安装检测



Weld flaw detection

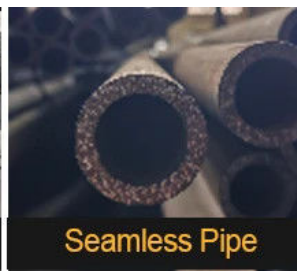
Make sure premium welding and not easy cracking

焊道探伤检测--确保优质的焊道和不容易开裂

Regular Testing 常规检测



Certified Steel



Seamless Pipe



40MuCr Pins



Graphite Sleeve



Established in 2018, Kaiping Zhonghe Machinery is a combination of manufacturing and trading. Our products, including excavator long reach booms, demolition arms, 2-3 sections telescopic arms, tunnel arms, standard/rock buckets, grapples, and rippers, have been selling well in more than 40 countries and areas.

We are located in Guangdong Province, China. A 18000 m² 50 welding workers with over 7 years experience, 30 senior designers, and a high-tech R&D team (10+ years on customization, 100+ technical patents), strict production system (6+ years quality control and cost control) and warm-hearted service team. Our annual output of various types of excavator boom arms can reach up to 600 sets.

We strive to uphold our core principles of "Merit Quality, Sincerity Management, and Customer Satisfaction".

Welcome to contact Aria for a big discount~~



Jiangmen Kaiping Zhonghe Machinery Manufacturing Co., Ltd



+86 13822325403



aria@excavatorboomarm.com



excavatorlongarm.com

9 Huancui West Road, Cuishanhu New Area, Kaiping City, Guangdong Province, China