



## Telescopic Boom Excavator Clamshell Bucket Mini Excavator For 20 Ton Excavator

Our Product Introduction

for more products please visit us on excavatorlongarm.com

### Basic Information

- Place of Origin: China, Guangdong
- Brand Name: Kaiping Zhonghe Machinery
- Certification: Patents, ISO
- Model Number: TB0016
- Minimum Order Quantity: 1 piece / set
- Price: USD 199.00-USD8000.00
- Packaging Details: Bubble / wooden cases
- Delivery Time: 7 days-20 days
- Payment Terms: T/T, L/C, or others as you request
- Supply Ability: 4 sets per week

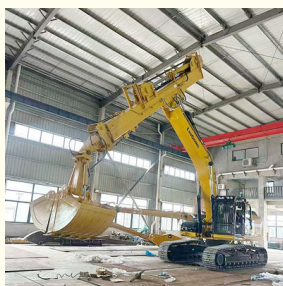
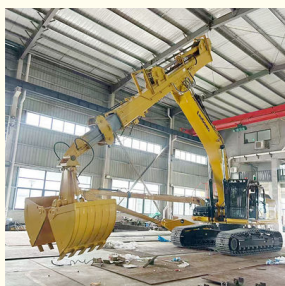


### Product Specification

- Bucket Capacity: 0.6m<sup>3</sup>
- Warranty: 6 Months
- Tube Material: Premium BS900E
- Counterweight: No Need To Add Counterweight
- Maximum Reach: 12m 14m 16m
- Model: SSB078
- Number Of Sections: 3 Sections
- Condition: Brand New
- Highlight: mini excavator clamshell bucket,  
Telescopic boom excavator clamshell bucket,  
20ton excavator clamshell bucket



### More Images



## Product Description

### Telescopic excavator boom telescopic boom excavator with clamshell bucket / standard bucket for Cat Hitachi Komatsu

#### Introducing the telescopic arm for excavators:

The telescopic arm is constructed from wire rods, tube steel, cylinders, and various other attachments designed for excavators.

This versatile arm is primarily utilized in construction applications, excelling in digging depths of 12m, 14m, 16m, 18m, or greater.

The excavator's telescopic arm can be equipped with a clamshell bucket or an orange peel grapple for enhanced functionality.



#### The features of the excavator telescopic arm set are as follows:

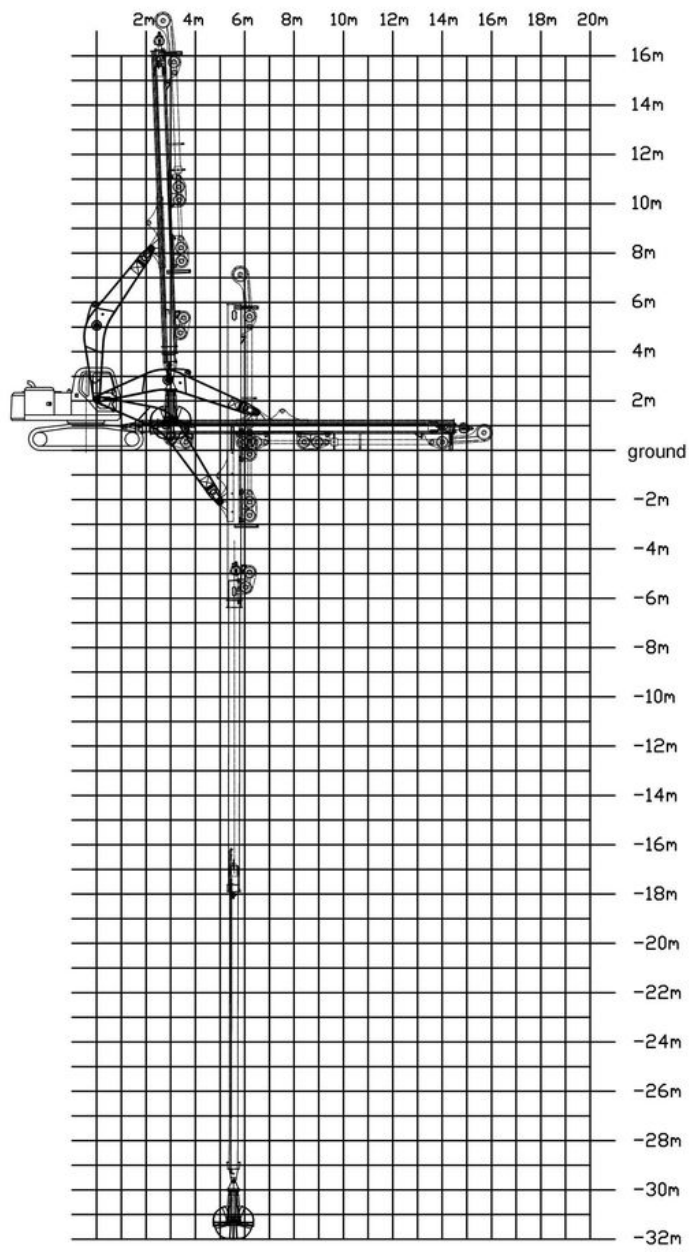
The working efficiency of the telescopic arm has been significantly improved by incorporating large pulleys and bearings, enabling it to withstand substantial stress.

Constructed from BS900E tube material, the excavator telescopic arm is both stronger and lighter. This advanced material not only reduces weight but also enhances strength, making it an excellent choice for construction applications. Its exceptional strength-to-weight ratio boosts operational efficiency, ensuring increased agility and effectiveness on-site.

The wire rods used in the telescopic arm consist of multi-strand wire ropes, designed to endure immense stress while being resistant to rupture.

#### Some specs of one set of telescopic excavator boom:

Length of telescopic dipper arm(m)	clamshell bucket's bucket capacity(cbm)
12m	0.6cbm
14m	0.4cbm
16m	0.4cbm
18m	0.4cbm
20m	0.6cbm
25m	1.5cbm
30m	1.5cbm 2cbm
32m	2.2cbm 2.5cbm
Kindly send your excavator model to us for checking the suitable length.	





**Production Process of one set of clamshell bucket mini excavator**

\* Comprehensive \* Professional \*Experienced

Large floor-standing double-sided boring machine---more precision

Beveling before welding which make sure that the welding is strong enough and with greater welding depth.



Full Tests---Every Procedure is under strict supervision 每道工序都是在严格监督下进行



Assembly inspection 安装检测



**Weld flaw detection**

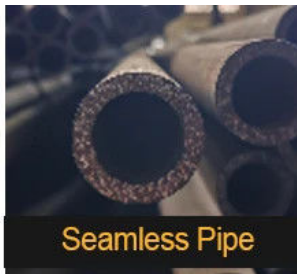
Make sure premium welding and not easy cracking

焊道探伤检测--确保优质的焊道和不容易开裂

Regular Testing 常规检测



Certified Steel



Seamless Pipe



40MuCr Pins



Graphite Sleeve



Established in 2018, Kaiping Zhonghe Machinery is a combination of manufacturing and trading. Our products, including excavator long reach booms, demolition arms, 2-3 sections telescopic arms, tunnel arms, standard/rock buckets, grapples, and rippers, have been selling well in more than 40 countries and areas.

We are located in Guangdong Province, China. A 18000 m<sup>2</sup> 50 welding workers with over 7 years experience, 30 senior designers, and a high-tech R&D team (10+ years on customization, 100+ technical patents), strict production system (6+ years quality control and cost control) and warm-hearted service team. Our annual output of various types of excavator boom arms can reach up to 600 sets.

We strive to uphold our core principles of "Merit Quality, Sincerity Management, and Customer Satisfaction".

**Welcome to contact Aria for a big discount~~**



**Jiangmen Kaiping Zhonghe Machinery Manufacturing Co., Ltd**



+86 13822325403



[aria@excavatorboomarm.com](mailto:aria@excavatorboomarm.com)



[excavatorlongarm.com](http://excavatorlongarm.com)

9 Huancui West Road, Cuishanhu New Area, Kaiping City, Guangdong Province, China