



## Telescopic Arm Excavator For Digging Caisson In Construction Work For 20 Ton

Our Product Introduction

for more products please visit us on [excavatorlongarm.com](http://excavatorlongarm.com)

### Basic Information

- Place of Origin: China, Guangdong
- Brand Name: Kaiping Zhonghe Machinery
- Certification: Patents, ISO
- Model Number: TB0020
- Minimum Order Quantity: 1 piece / set
- Price: USD 200.00-USD10000.00
- Packaging Details: Bubble / wooden cases
- Delivery Time: 7 days-20 days
- Payment Terms: T/T, L/C, or others as you request
- Supply Ability: 4 sets per week



### Product Specification

- Condition: Brand New
- Bucket Capacity: 0.4m<sup>3</sup>
- Number Of Sections: 3 Sections
- Warranty: 6 Months
- Tube Material: Premium BS900E
- Model: SSB089
- Maximum Reach: 16m 18m
- Type: Excavator Attachment
- Highlight: Excavator Telescopic Arm,  
Construction Work Telescopic Arm,  
20 ton Telescopic Arm



### More Images



## Product Description

### Telescopic Arm for Excavator for 20ton excavator 16m 18m digging depth

#### Introduction of telescopic arm for excavator / excavator telescopic arm:

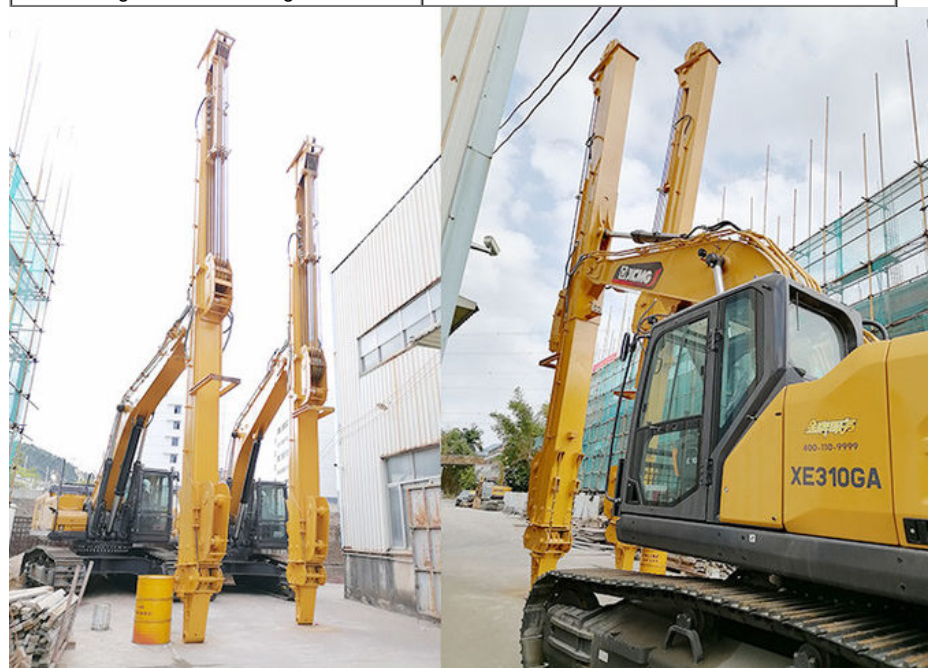
- \* Telescopic arm excavator is made of wire rods, tube steel, cylinder and other excavator attachments.
- \* Telescopic arm excavator is commonly used in construction work which specializes in digging 16m 18m or more.
- \* Excavator telescopic arm with clamshell bucket / orange peel grapple

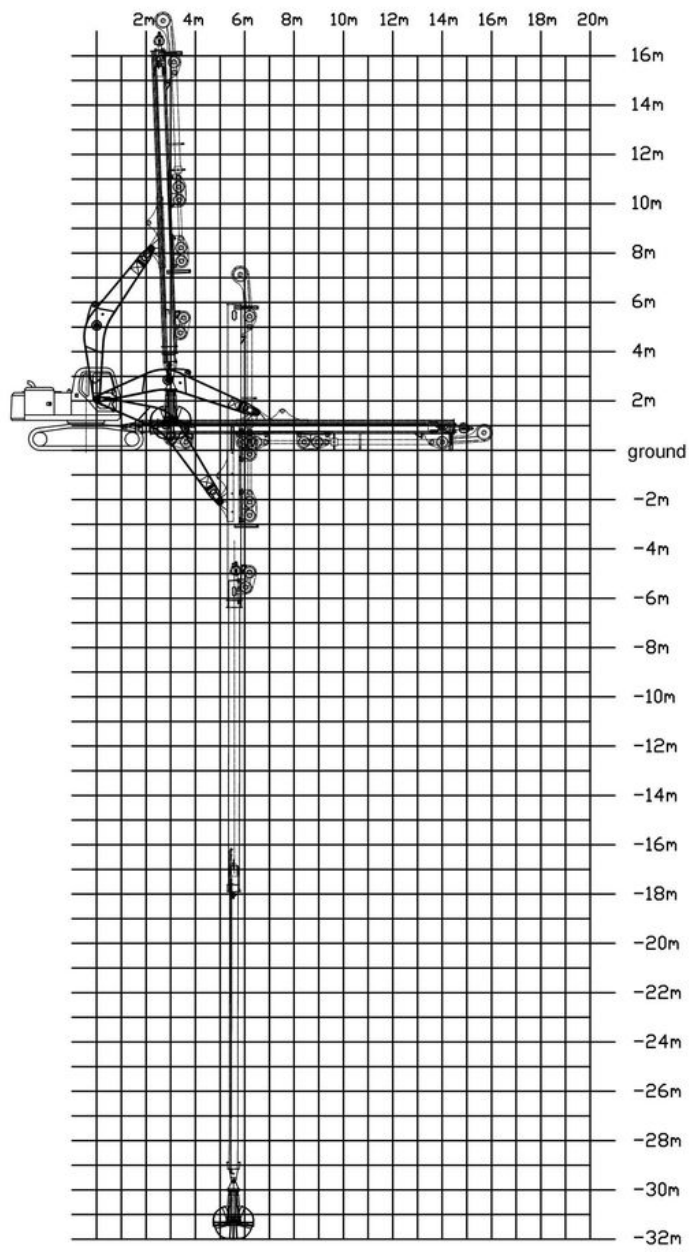
#### Features of one set of excavator-telescopic-arm are as follow:

- \* Excavator section telescopic arm's working effectiveness is enhanced: we use large pulley and bearing so the excavator telescopic arm can bear huge stress.
- \* The tube material of excavator telescopic arm is BS900E which is stronger and lighter. BS900E this advanced material is not only lighter but also stronger, providing an ideal solution for construction work. Its superior strength-to-weight ratio enhances operational efficiency, allowing for greater agility and effectiveness on the job site.
- \* Wire rods of excavator telescopic arm is multi-strand wires ropes which can bear huge stress and not easy rupture.

#### Some specs of one set telescopic arm excavator:

Length of telescopic dipper arm(m)	clamshell bucket's bucket capacity(cbm)
16m	0.4cbm
18m	0.4cbm
20m	0.6cbm
25m	1.5cbm
30m	1.5cbm 2cbm
32m	2.2cbm 2.5cbm
Kindly send your excavator model to us for checking the suitable length.	







**Production Process of one set of excavator telescopic arm:**

\* Professional \*Experienced \* Comprehensive

Large floor-standing double-sided boring machine---more precision



Full Tests---Every Procedure is under strict supervision 每道工序都是在严格监督下进行



Assembly inspection 安装检测



**Weld flaw detection**

Make sure premium welding and not easy cracking

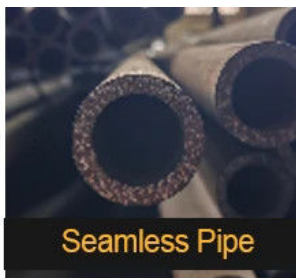
焊道探伤检测--确保优质的焊道和不容易开裂



Regular Testing 常规检测



Certified Steel



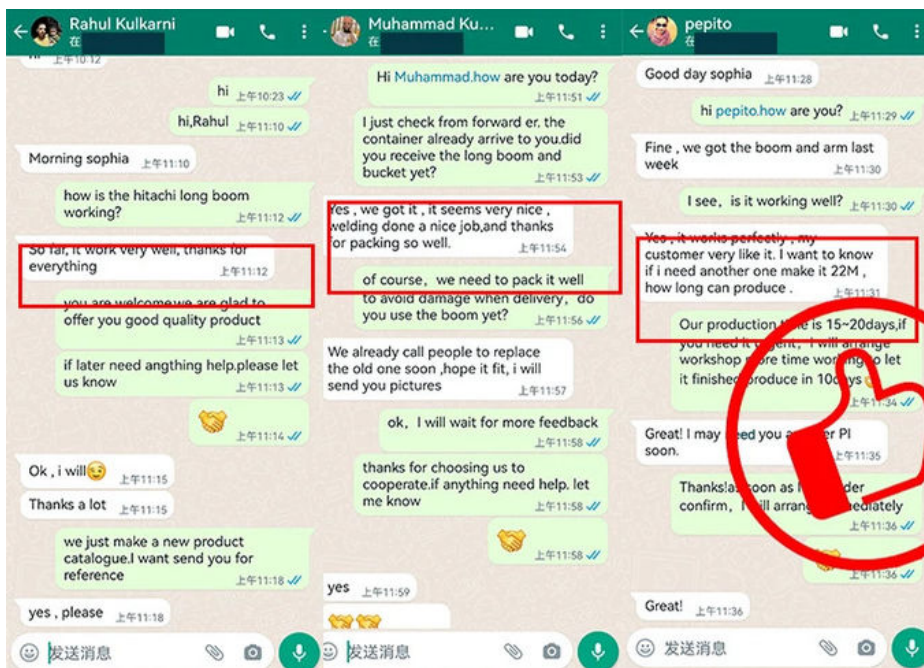
Seamless Pipe



40MuCr Pins



Graphite Sleeve



**Welcome to contact Aria for a big discount~~**



**Jiangmen Kaiping Zhonghe Machinery Manufacturing Co., Ltd**



+86 13822325403



aria@excavatorboomarm.com



excavatorlongarm.com

9 Huancui West Road, Cuishanhu New Area, Kaiping City, Guangdong Province, China