



Telescopic Boom Excavator With Grab Clamshell Bucket For Cat Hitachi Komatsu

Our Product Introduction

for more products please visit us on excavatorlongarm.com

Basic Information

- Place of Origin: Guangdong Province, China
- Brand Name: Kaiping Zhonghe Machinery
- Certification: Patents, ISO
- Model Number: SSB015
- Minimum Order Quantity: 1 piece / set
- Price: USD 199.00-USD28000.00
- Packaging Details: Bubble / wooden cases
- Delivery Time: 7 days-20 days
- Payment Terms: T/T, L/C, or others as you request
- Supply Ability: 4 sets per week

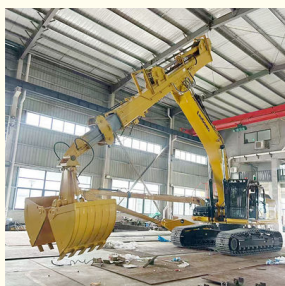


Product Specification

- Welding: Premium
- Maximum Reach: 12m 18m 20m 31m 32m
- Warranty: 6 Months
- Bucket Capacity: 2.2cbm
- Condition: Brand New
- Number Of Sections: 3 Sections
- Type: Excavator Attachment
- Material: BS900E, Lighter And Stronger
- Highlight: Komatsu Telescopic Boom Excavator, cat hitachi komatsu Excavator, Grab Clamshell Bucket Excavator



More Images



Product Description

Excavator telescopic dipper arm dipper long arm for digging vertically

Introducing the telescopic dipper arm for excavators:

The hydraulic excavator arm is one of our best-selling products, renowned for its extended reach. A complete excavator telescopic dipper arm consists of key components such as wire ropes, steel materials, and cylinder. One of the essential factors to consider is its lifting capacity. 16m telescopic boom excavator can be carry a 0.4cbm clamshell bucket. 18m telescopic excavator with 0.4cbm clamshell bucket. 20m excavator telescopic for 26ton-28ton excavator with 0.6cbm clamshell bucket.

Some specs of one set telescopic excavator with clamshell bucket:

Length of telescopic dipper arm(m)	clamshell bucket's bucket capacity(cbm)
16m	0.4cbm
18m	0.4cbm
20m	0.6cbm
25m	1.5cbm
30m	1.5cbm 2cbm
32m	2.2cbm 2.5cbm







Production Process of one set of excavator telescopic:

High-quality material: We use high-quality steel material BS900E.

* Welding: the welding is premium. Every welding bead will be tested fully before sending to clients.

* Premium production process. The telescopic boom excavator will be put on the large floor-standing double-sided boring machine.

The installation sizes will be suitable and install on the excavator suitably.

Professional and Experienced process:



Full Tests---Every Procedure is under strict supervision 每道工序都是在严格监督下进行



Assembly inspection 安装检测



Weld flaw detection

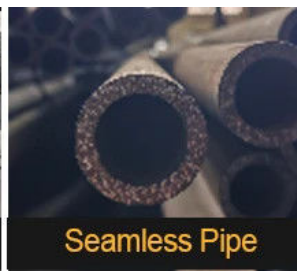
Make sure premium welding and not easy cracking

焊道探伤检测--确保优质的焊道和不容易开裂

Regular Testing 常规检测



Certified Steel



Seamless Pipe

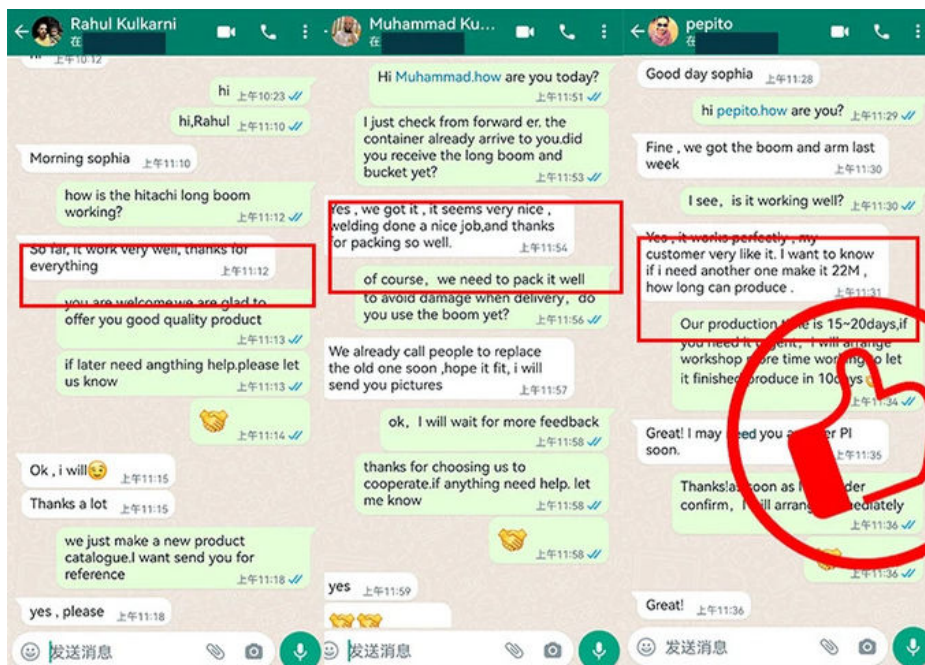


40MuCr Pins



Graphite Sleeve

Feedback of Hydraulic telescopic boom / Hydraulic telescopic arm is very good.



Established in 2018, Kaiping Zhonghe Machinery is a combination of manufacturing and trading. Our products, including excavator long reach booms, demolition arms, 2-3 sections telescopic arms, tunnel arms, standard/rock buckets, grapples, and rippers, have been selling well in more than 40 countries and areas.

We are located in Guangdong Province, China. A 18000 m² 50 welding workers with over 7 years experience, 30 senior designers, and a high-tech R&D team (10+ years on customization, 100+ technical patents), strict production system (6+ years quality control and cost control) and warm-hearted service team. Our annual output of various types of excavator boom arms can reach up to 600 sets.

We strive to uphold our core principles of "Merit Quality, Sincerity Management, and Customer Satisfaction".

Any interest, welcome to contact~



Jiangmen Kaiping Zhonghe Machinery Manufacturing Co., Ltd



+86 13822325403



aria@excavatorboomarm.com



excavatorlongarm.com

9 Huancui West Road, Cuishanhu New Area, Kaiping City, Guangdong Province, China