



Telescopic Excavator With Clamshell Bucket Telescopic Boom For Cat Hitachi Komatsu

Our Product Introduction

for more products please visit us on excavatorlongarm.com

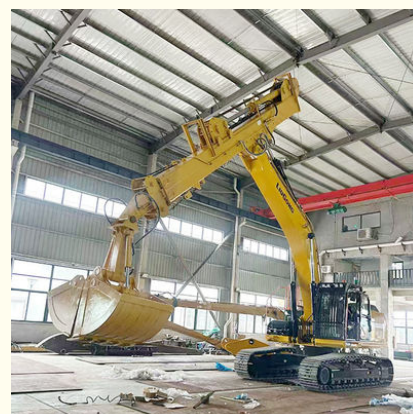
Basic Information

- Place of Origin: China
- Brand Name: Zhonghe Machinery
- Certification: Patents
- Model Number: SSB010
- Minimum Order Quantity: 1 piece / set
- Price: USD 199.00-USD7999.00
- Packaging Details: Bubble / wooden cases
- Delivery Time: 7 days-20 days
- Payment Terms: T/T, L/C, or others as you request
- Supply Ability: 7 sets per week



Product Specification

- Maximum Reach: 16m 18m 20m
- Bucket Capacity: 0.4cbm, 0.6cbm, 1.5cbm, 2.2cbm, 2.5cbm
- Welding: Premium
- Condition: New
- Model: SSB089
- Warranty: 6 Months
- Number Of Sections: 3 Sections
- Type: Excavator Attachment
- Highlight: cat Telescopic Boom Excavator,
clamshell Bucket Telescopic Excavator,
hitachi komatsu Telescopic Boom Excavator



More Images



Product Description

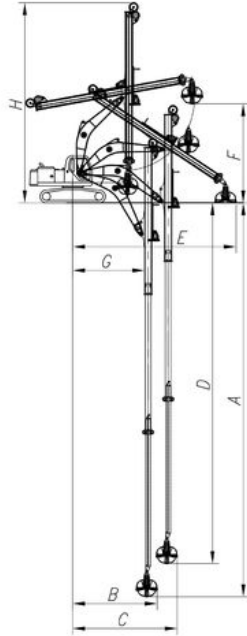
16m 18m telescopic excavator for 20 ton excavator with clamshell bucket

Introduction of telescopic excavator:

The telescopic boom of an excavator is commonly utilized in construction activities to retrieve materials such as soil, sand, and silt from deep beneath the surface. It efficiently handles vertical grabs of sand, silt, soil, gravel, and similar substances. The telescopic boom is fitted with a clamshell bucket or hydraulic grapple, with its dimensions varying according to the length of the excavator's telescopic arm.

Specs of one set of 16m 18m telescopic boom for excavator is as follow:

* maximum digging depth reach 16m 18m * 0.4cbm clamshell bucket



16M- Telescopic Boom	
A. Maximum vertical digging depth	16000mm
B. Maximum vertical depth digging radius	7095mm
C. Maximum vertical excavation working radius	8801mm
D. Maximum vertical digging depth	13340mm
E. Maximum vertical excavation working radius	13586mm
F. Maximum unloading height	8044mm
G. Minimum turning radius	6150mm
H. The minimum turning radius is the height of the whole machine	8087mm







Production Process of telescopic excavator:

- * Excavator long arm is processed on the large floor-standing double-sided boring machine which is high precision make sure that the telescopic dipper arm can be suitably installed on the excavators.
- * Excavator telescopic is full tested before sending to clients



Any interest, welcome to contact~



Jiangmen Kaiping Zhonghe Machinery Manufacturing Co., Ltd



+86 13822325403



aria@excavatorboomarm.com



excavatorlongarm.com

9 Huancui West Road, Cuishanhu New Area, Kaiping City, Guangdong Province, China