



Excavator Piling Arm Pile Higher High Effective For 20 Ton Excavator

Our Product Introduction

for more products please visit us on excavatorlongarm.com

Basic Information

- Place of Origin: China
- Brand Name: Zhonghe Machinery
- Certification: CE, patent, ISO
- Model Number: DZB0012
- Minimum Order Quantity: 1 set / piece
- Price: USD 159 - USD 2599
- Packaging Details: bubble / wooden cases
- Delivery Time: 15 - 21 / working days
- Payment Terms: T/T, L/C
- Supply Ability: 7 sets per week



Product Specification

- Features: Longer Life-span & High Effective
- Length: 11m-24m
- Pile: Steel Sheet Pile, Cement Pile
- Material: Premium Shaogang Q355B
- Apply To: 20 Ton - 85 Ton Excavator
- Warranty: 6 Moths
- Highlight: **High Effective Excavator Piling Arm, High Effective Piling Arm, 20 ton excavator piling arm**



More Images



Product Description

Excavator Pile Driving Arm for 20ton 30ton 40ton 50ton 65ton excavators

Some introduction of excavator piling arm:

Excavator arms and booms is commonly used in construction work for various working conditions like piling the steel sheet pile, photovoltaic pile, casing, U piles. Excavator pile driver attachment can be installed with a drill rod or a hammer. Because of the hard working condition, the excavator pile driving arm should be strength enough.

Some factors should be considered when producing one set of high-quality excavator pile arm and pile boom:

1. The piling height: piling height will effect the height of piles. If the piling height is high, then excavator arm and boom can pile more different height.
2. The box design: High strength box design is necessary for one set of premium excavator pile arm pile boom. We adopt horizontal and vertical plates design which can strengthen the excavator long reach boom.
3. High quality welding bead: The plates are beveled deeply before welding which can enhance the welding quality



Steel sheet pile



Photovoltaic pile



Casing



U pile





Some specification of one set of excavator pile arm pile boom:

Suitable Excavator Model (ton)	Total Length (m)
20-24T	11-12m
25-28 T	12.5-13m
30-38 T	13.5m
36-39 T	15m
40-47 T	13-14.2m
40-50T	15-15.8m
45-52T	16.5-16.8m
47-52T	18-19m
65-85T	24m

More details of Excavator pile driving arm:



The back bushing of the arm is wrapped by the whole board to avoid falling off



Adopt 90 degree connectors to avoid hose bending and increase its service life



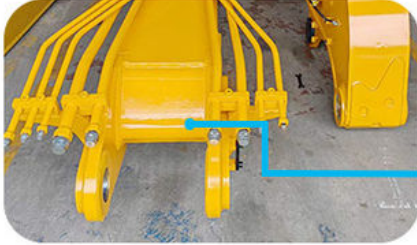
The angle of big boom and small arm can reach 160 degree--pile higher



The boom seat sleeve adopts all in one molding process



The upper and lower cover are thickened---longer service life-span



Four layers five passes welding
Strong welding not easy cracking



The box has built-in transverse and vertical reinforcement ribs to improve its tensile strength



Multi-layer reinforced plate at the stress place, more firm



The rubber sleeves are equipped on the pipelines--lessen vibration protect pipelines



Centralized lubrication system
--easy for later maintenance

Some introduction of Kaiping Zhonghe Machinery:

1. Experienced & Professional
2. Strict Production Procedure
3. Precision Machines which ensure the quality of excavator pile driving arm





Established in 2018, Kaiping Zhonghe Machinery is a combination of manufacturing and trading. Our products, including excavator long reach booms, demolition arms, 2-3 sections telescopic arms, tunnel arms, standard/rock buckets, grapples, and rippers, have been selling well in more than 40 countries and areas.

We are located in Guangdong Province, China. A 18000 m² 50 welding workers with over 7 years experience, 30 senior designers, and a high-tech R&D team (10+ years on customization, 100+ technical patents), strict production system (6+ years quality control and cost control) and warm-hearted service team. Our annual output of various types of excavator boom arms can reach up to 600 sets.

We strive to uphold our core principles of "Merit Quality, Sincerity Management, and Customer Satisfaction".

Welcome Perks Await.

Whatsapp: [+86 13822325403](https://wa.me/8613822325403)

Email: aria@excavatorboomarm.com
13822325403@163.com

Key word: construction bigmachine heavymachine MechanicalGrab HydraulicRotateGrab OrangePeelGrab BucketClamp DemolitionShear Ripper Rake CompactionWheel HydraulicPlateCompactor PileHammer HydraulicBreak QuickHitch GPBucket RockBucket TiltBucket SkeletonBucket CleanBucket MudBucket DitchBucket TrenchBucket ClamshellBucket slidingboom slidingarm arm boom slide demolition demolitionboom demolitionarm longboom longarm boom arm pile pilearm pileboom bucket mechanicalgrapple mechanicalgrab



Jiangmen Kaiping Zhonghe Machinery Manufacturing Co., Ltd



+86 13822325403



aria@excavatorboomarm.com



excavatorlongarm.com

9 Huancui West Road, Cuishanhu New Area, Kaiping City, Guangdong Province, China