



32m Excavator Telescopic Boom For 40 Ton 50 Ton Excavator

Our Product Introduction

for more products please visit us on excavatorlongarm.com

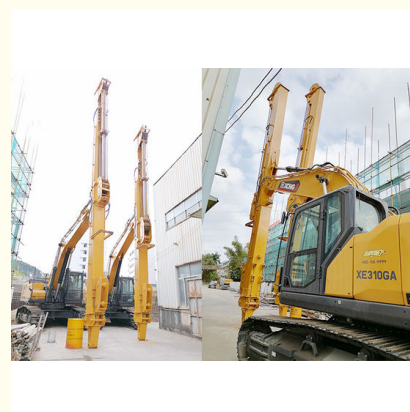
Basic Information

- Place of Origin: China
- Brand Name: Zhonghe Machinery
- Certification: Patents
- Model Number: SSB010
- Minimum Order Quantity: 1 piece / set
- Price: USD 599.00-USD30000.00
- Packaging Details: Bubble / wooden cases
- Delivery Time: 7 days-20 days
- Payment Terms: T/T, L/C, or others as you request
- Supply Ability: 21 sets per week



Product Specification

- Condition: Brand New
- Welding: Premium
- Type: Excavator Attachment
- Bucket Capacity: 2.2cbm
- Number Of Sections: 3 Sections
- Model: SSB089
- Warranty: 6 Months
- Maximum Reach: 31m 32m
- Highlight: 40 ton telescopic boom, 50 ton telescopic boom, 32m telescopic boom



More Images



Product Description

31m 32m clamshell telescopic arm for 40ton - 50ton excavator

Introduction of clamshell telescopic arm:

Clamshell telescopic arm is used for digging or grabbing sand, soil, silt, gravel from the basement vertically. The front attachment of excavator extendable boom can be a grab, clamshell bucket, standard bucket.





Specs of one set of 31m 32m telescopic dipper arm is as follow:
* maximum digging depth reach 31m 32m * 2.2cbm clamshell bucket







Production Process of extendable boom arm:

*** Professional *Precision *Comprehensive**

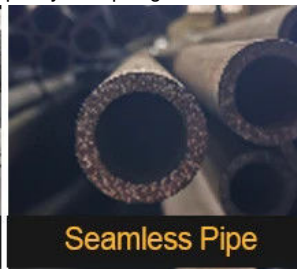
More than 60 experienced welding handyman---smooth and high-quality welding

Professional technicians who test the long reach telescopic boom regularly from welding, connectors, sleeves, pipelines, pulley etc.

The clamshell telescopic arm's quality is super guaranteed.



Certified Steel



Seamless Pipe



40MuCr Pins



Graphite Sleeve



Full and comprehensive tests are conducted during the whole production process:

Full Tests---Every Procedure is under strict supervision 每道工序都是在严格监督下进行



Assembly inspection 安装检测



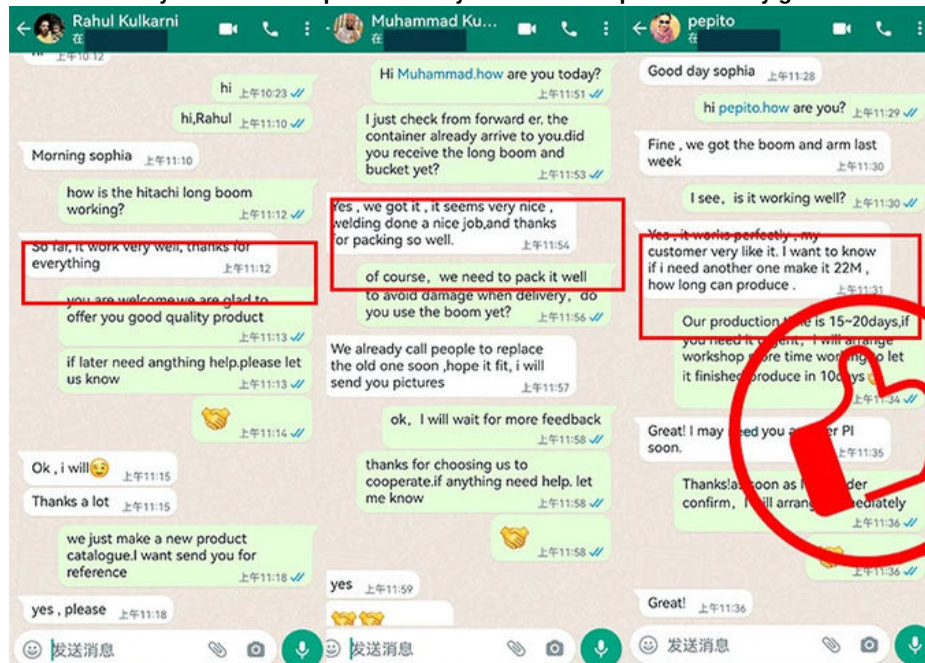
Weld flaw detection

Make sure premium welding and not easy cracking

焊道探伤检测--确保优质的焊道和不容易开裂

Regular Testing 常规检测

Feedback of Hydraulic telescopic boom / Hydraulic telescopic arm is very good.





Established in 2018, Kaiping Zhonghe Machinery is a combination of manufacturing and trading. Our products, including excavator long reach booms, demolition arms, 2-3 sections telescopic arms, tunnel arms, standard/rock buckets, grapples, and rippers, have been selling well in more than 40 countries and areas.

We are located in Guangdong Province, China. A 18000 m² 50 welding workers with over 7 years experience, 30 senior designers, and a high-tech R&D team (10+ years on customization, 100+ technical patents), strict production system (6+ years quality control and cost control) and warm-hearted service team. Our annual output of various types of excavator boom arms can reach up to 600 sets.

We strive to uphold our core principles of "Merit Quality, Sincerity Management, and Customer Satisfaction".

Any interest, welcome to contact~



Jiangmen Kaiping Zhonghe Machinery Manufacturing Co., Ltd



+86 13822325403



aria@excavatorboomarm.com



excavatorlongarm.com

9 Huancui West Road, Cuishanhu New Area, Kaiping City, Guangdong Province, China