



## 16m Excavator Telescopic Arm For 20 Ton Excavator

Our Product Introduction

for more products please visit us on excavatorlongarm.com

### Basic Information

- Place of Origin: China
- Brand Name: Zhonghe Machinery
- Certification: Patents
- Model Number: SSB010
- Minimum Order Quantity: 1 piece / set
- Price: USD 199.00-USD3999.00
- Packaging Details: Bubble / wooden cases
- Delivery Time: 7 days-20 days
- Payment Terms: T/T, L/C, or others as you request
- Supply Ability: 21 sets per week



### Product Specification

- Maximum Reach: 16m 18m
- Welding: Premium
- Bucket Capacity: 0.4cbm, 0.6cbm, 1.5cbm, 2.2cbm, 2.5cbm
- Condition: New
- Number Of Sections: 3 Sections
- Model: SSB089
- Warranty: 6 Months
- Type: Excavator Attachment
- Highlight: 16m Excavator Telescopic Arm, 20 ton Excavator Telescopic Arm



### More Images



## Product Description

### 16m telescopic extraction arm for 20 ton excavator with clamshell bucket

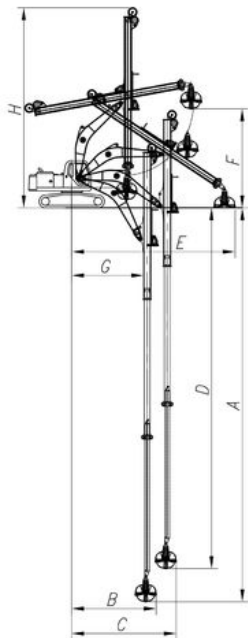
#### Introduction of excavator long arm:

Excavator telescopic arm is frequently used in construction work to grab soil, sand, silt from the basement. Vertical grab sand, silt,

Telescopic dipper arm is equipped with a clamshell bucket / hydraulic grapple which size depends on the length of telescopic arm excavator.

#### Specs of one set of 16m telescopic dipper arm is as follow:

\* maximum digging depth reach 16m \* 0.4cbm clamshell bucket



16M- Telescopic Boom	
A. Maximum vertical digging depth	16000mm
B. Maximum vertical depth digging radius	7095mm
C. Maximum vertical excavation working radius	8801mm
D. Maximum vertical digging depth	13340mm
E. Maximum vertical excavation working radius	13586mm
F. Maximum unloading height	8044mm
G. Minimum turning radius	6150mm
H. The minimum turning radius is the height of the whole machine	8087mm









#### **Production Process of telescopic arm for excavator:**

\*High Precision \*Full test

Long reach boom for excavator is processed by Large floor-standing double-sided boring machine. The process ensure machining precision of no less than 0.05mm.



Before sending to clients, telescopic dipper arm for excavator will be tested full.

#### **Welding bead test-- ensure premium welding and not easy crack**

After welding, flaw detection on each weld will be conducted. Testing welding bed is one of our must-do processes to ensure that the weld meets the standards, detect whether there are false welds, and whether there are pores, so as to ensure the firmness of the weld. Every step of our production is strictly standardized.



**Any interest, welcome to contact~**



**Jiangmen Kaiping Zhonghe Machinery Manufacturing Co., Ltd**



+86 13822325403



aria@excavatorboomarm.com



excavatorlongarm.com

9 Huancui West Road, Cuishanhu New Area, Kaiping City, Guangdong Province, China