



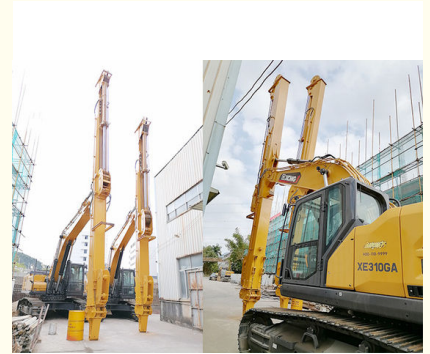
18m Telescopic Arm Excavator For 25ton Excavator

Our Product Introduction

for more products please visit us on excavatorlongarm.com

Basic Information

- Place of Origin: China
- Brand Name: Zhonghe Machinery
- Certification: Patents
- Model Number: SSB089
- Minimum Order Quantity: 1 piece / set
- Price: USD 100.00-USD7990.00
- Packaging Details: Bubble / wooden cases
- Delivery Time: 7 days-20 days
- Payment Terms: T/T, L/C, or others as you request
- Supply Ability: 15 sets per week



Product Specification

- Welding: Strong
- Number Of Sections: 3 Sections
- Type: Excavator Attachment
- Bucket Capacity: 0.4cbm, 0.6cbm, 1.5cbm, 2.2cbm, 2.5cbm
- Maximum Reach: 25m 30m 32m
- Model: SSB089
- Warranty: 6 Months
- Condition: New
- Highlight: 18m telescopic arm for excavator,
25 ton excavator telescopic arm,
telescopic arm excavator 25 ton



More Images



Product Description



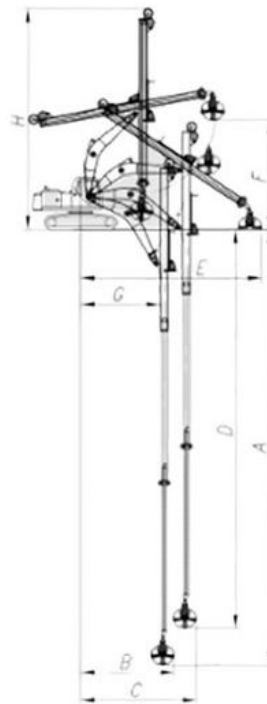
Our Product Introduction

for more products please visit us on excavatorlongarm.com



Suitable Excavator Attachments:

clamshell bucket / standard buckets / grabs / orange peel grabs / other grabs



Features:

Features:

Premium Material: The excavation equipment is made of BS900E, a lighter and stronger material that is less likely to crack and has a longer life-span.

Deeper Digging Depth: The digging depth of this equipment is impressive, reaching up to 25m, 30m, 32m, 34m, making it suitable for various excavation purposes.

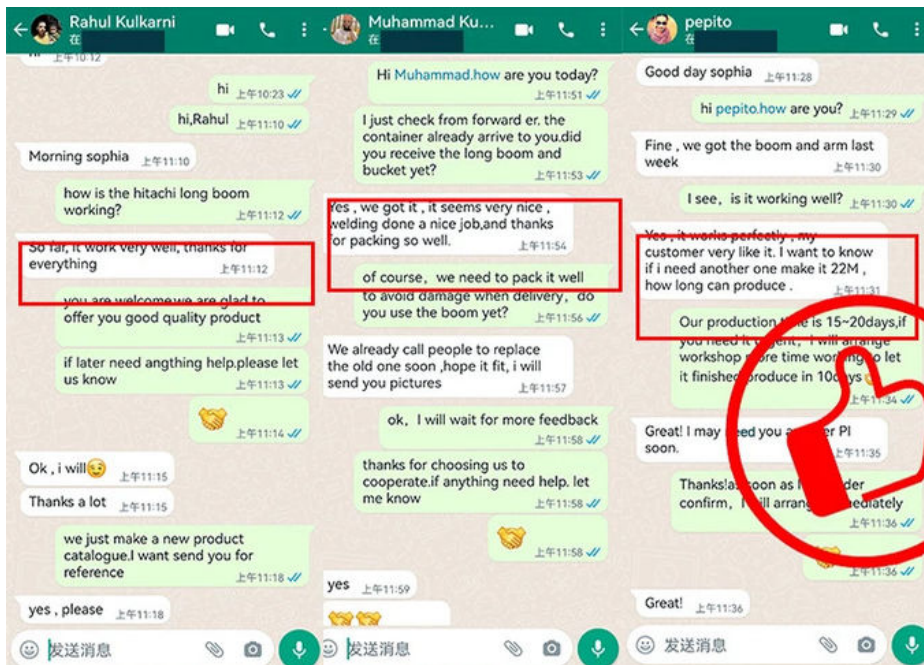
Suitable for Various Brands of Excavator: This excavation equipment can be used with a variety of different brands of excavators.

Versatile Grabs Available: This equipment can be equipped with a range of grabs, including clamshell bucket, standard bucket, Orang Peel Grab, and other grabs.

Pulley: The pulley is made of MC steel with the same hardness as steel, but is light and wear-resistant. The wheel diameter is enlarged to withstand greater loads.

Bearings: The bearings are high-speed heavy-load bearings, and the bearings use larger diameters to withstand greater loads.

Wire Rope: The equipment uses multi-strand wire rope, enabling it to bear greater tension and impact force.



Packing and Shipping:

The Telescopic Dipper Arm product will be packaged and shipped with the utmost care to ensure it arrives safely and ready for use. The product will be securely packaged in bubble or wooden cases. Delivery times will vary depending on the destination, but we will do our best to ensure that the product arrives as quickly as possible.

[Welcome to contact for a big discount](#)



Jiangmen Kaiping Zhonghe Machinery Manufacturing Co., Ltd



+86 13822325403



aria@excavatorboomarm.com



excavatorlongarm.com

9 Huancui West Road, Cuishanhu New Area, Kaiping City, Guangdong Province, China