



Crawler Excavator Rock Breaker Arm For Heavy Excavation And Increased Productivity

Our Product Introduction

for more products please visit us on excavatorlongarm.com

Basic Information

- Place of Origin: China
- Brand Name: ZH
- Certification: CE
- Model Number: JCB001
- Minimum Order Quantity: 1 SET
- Price: \$24000/set
- Packaging Details: Stretch film packaging
- Delivery Time: 20-30 working day
- Payment Terms: T/T
- Supply Ability: 600

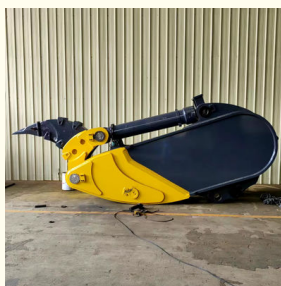
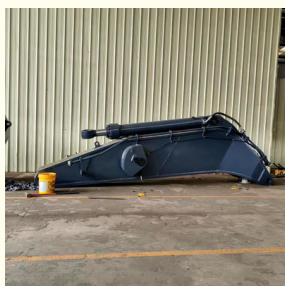


Product Specification

- Condition: New, 100% new, New Long Reach Boom & Arm
- Warranty: 6 Months
- After-sales Service Provided: Online Support, Video Technical Support
- Bucket Capacity: 0.9m³, 0.4-0.5CBM, 0.2-6m³
- Machine Weight: 45-120T
- Color: Customer's Request
- Application: Crawler Excavator
- Material: Q355
- Type: Excavator Rock Arm/ Ripper Arm
- Brand: Zhonghe
- Highlight: Crawler Excavator Rock Breaker Arm, Heavy Excavation Rock Breaker Arm, Increased Productivity Rock Breaker Arm



More Images



Excavator Rock Breaker Arm for Heavy Excavation and Increased Productivity





Excavator Rock Ripper Boom

1. The overall plate thickening treatment, the internal filling of high-density adamantine, the overall weight is heavier, the ratio is reasonable, can produce more digging force.
2. The enlarged arm cylinder and bucket cylinder can carry greater digging force without malfunctioning.
3. Rock arm and the ripper adopt gradual design, which concentrates all the digging force on the tip of the ripper teeth, and the crushing effect is better.
4. The entire boom arm is post-weld bored, achieving precision comparable to original arms, ensuring superior overall quality.

Any details, pls contact Ada.
Whatsapp/Tel: +86 15322105263
E-mail: abby@excavatorboomarm.com

What is an excavator rock ripper boom/rock boom?

A **rock ripper boom** for excavators is a purpose-built attachment that transforms an excavator into a powerful tool for breaking through hard rock and other tough materials. The boom is equipped with a reinforced arm and a ripper attachment that allows for deep penetration into solid rock formations. These booms are particularly useful for heavy-duty excavation jobs, such as digging through rock layers in quarries or large-scale demolition operations.

Excavator Rock Boom Seperate-arm Ripper & Rock Boom Mono-arm Ripper

Rock boom seperate-arm ripper



Rock boom mono-arm ripper



ZHONGHE

Contact Ada---WA/Tel :0086 15322105263

Rock Boom Seperate-arm Ripper VS Rock Boom Mono-arm Ripper

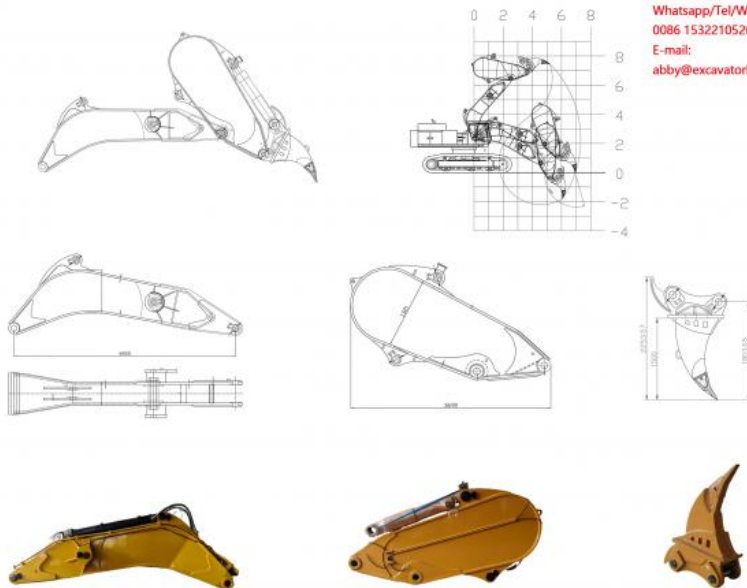
	Rock Boom Seperate-arm Ripper	Rock Boom Mono-arm Ripper
In weight	A 50-ton excavator weighs 21-22 tons	A 50-ton excavator weighs 17.5-19 tons
In appearance	The boom cylinder is no different from the standard boom cylinder, with single oil inlet and single oil return.	The arm and the ripper are integrated into one design, a one-piece style.

In stick cylinder	The boom cylinder is no different from the standard boom cylinder, with single oil inlet and single oil return.	The arm cylinder has double oil inlet and double oil return (it integrates the oil inlet and oil return of the bucket cylinder into the arm cylinder).
--------------------------	---	--

General Arrangement Drawing



Excavator Rock Boom Product Components



Whatsapp/Tel/Wechat:
0086 15322105263

E-mail:
abby@excavatorboomarm.com

Rock Boom and hydraulic line

Customized production of the boom that fits the main engine of the excavator, with hydraulic pipes road, you only need to prepare a main engine and boom cylinder.

Rock Arm

It is cut and welded from a whole piece of high manganese alloy steel the structure is compact and complete, and the actual shape is adjusted according to the model of the host

Rock Ripper

Customized production of the boom that fits the main engine of the excavator, with hydraulic pipes road, you only need to prepare a main engine and boom cylinder.



Product Description

WA: +86 15322105263

E-mail: abby@excavatorboomarm.com



Bucket cylinder is inverted

It effectively avoids damage to the piston rod caused by possible collisions during excavation, reduces use risks and saves maintenance costs.

Powerful Cylinders

Made of special designed sealing structure, strong power with long durability. stick cylinder has a piston rod of 140mm. It has large flow, high strength and stronger power.



High quality

The metal hydraulic pipeline adopts pickling and phosphating process to avoid impurities and rust, and protect the main pump from damage. The hydraulic hose is a Continental brand with high reliability.



Cylinder through-pin design

The process requirements are higher, the concentricity is higher, the wear is reduced, the life is longer and more durable.



Strong digging force.

The digging force is stronger, the operation is easier and the efficiency is higher. Single-sided pipeline design: The pipeline is visible during operation, effectively avoiding the risk of collision, reducing the risk of use, and saving maintenance costs.



Wear-resistant ripper teeth

The ripper has a protective device to prevent stones from hitting the cylinder, and its plate is very thick with strong reinforcement plates. We use Diamond brand D11 ripper teeth, the tooth seat is more wear-resistant and not easy to break.



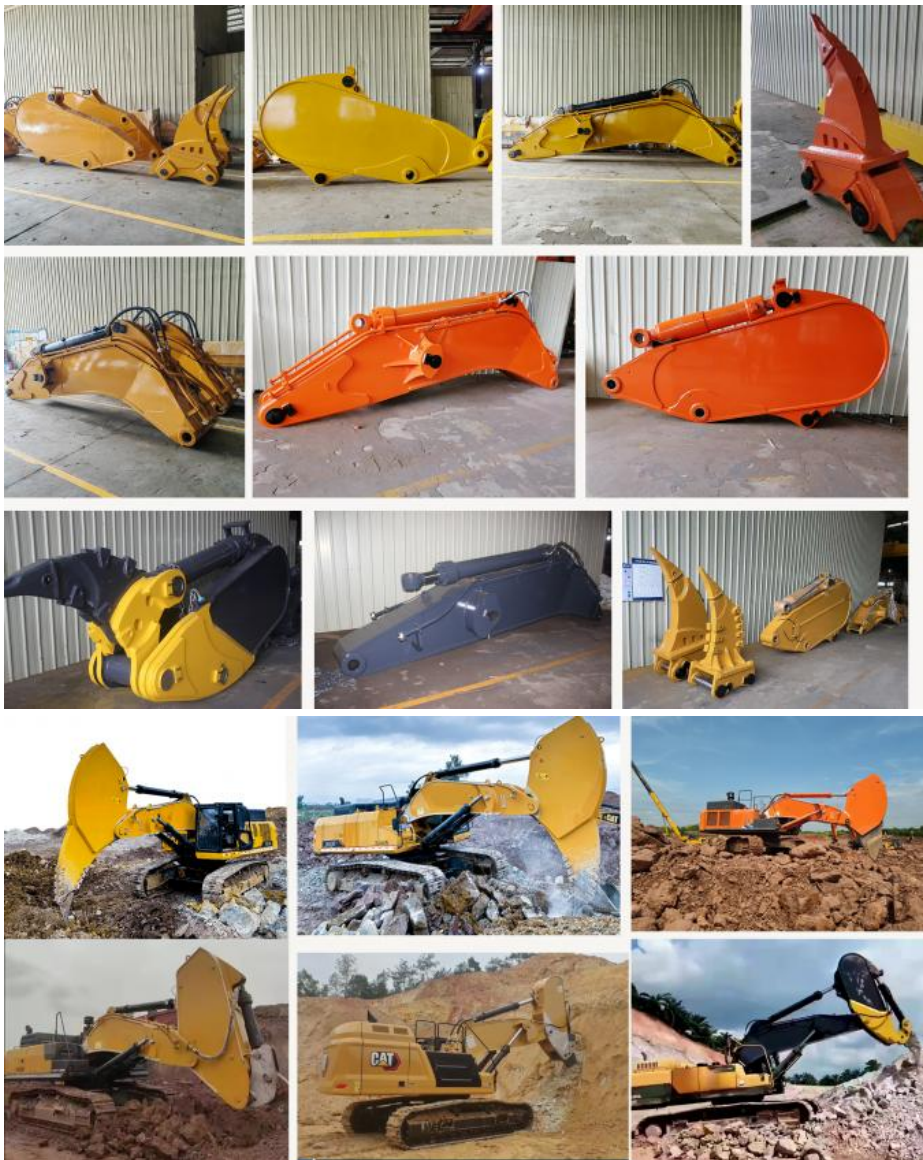
Suitable Working Conditions for Excavator Rock Arms:

Heavy Earthworks and Excavation Projects

For **heavy earthworks**, such as the construction of large infrastructure projects (dams, bridges, highways), excavator rock arms are essential for moving large amounts of solid rock and breaking through tough ground. The rock arm allows the excavator to efficiently break and remove solid rock, providing speed and accuracy in projects that require large-scale excavation.

Key features for heavy earthworks: High power to move large volumes of earth, durable design to handle tough, dense materials.

Common use cases: Excavating for large infrastructure projects, such as building bridges, dams, or highways through rocky terrain.

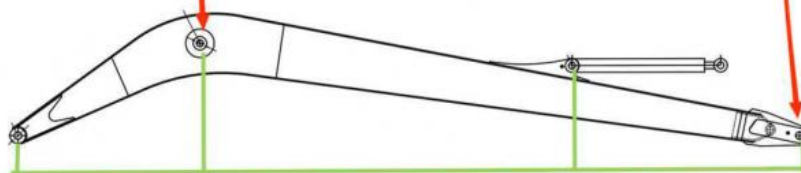


High precision machine of Zhonghe Machinery Manufacturers

Double-sided boring lathe



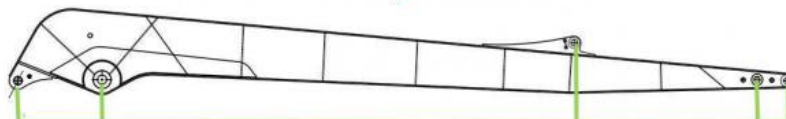
After the excavator boom and arm are assembled, the pins on the boom are drilled to ensure that the pins on the boom are parallel to each other and the cross section of the pin hole is perpendicular to the pin. The double-sided boring machine of the boom makes the hole position more accurate and the quality higher.



Make sure the cross section of the pin hole is perpendicular to the shaft.



Make sure the axis is parallel to the axis



Make sure the cross section of the pin hole is perpendicular to the shaft



Make sure the axis is parallel to the axis

Large, floor-standing double-sided boring and milling machine:

Enhancing Precision and Uniformity: The double-sided boring and milling machine improves the overall accuracy and consistency of the operations.

Post-Welding Boring: After welding, the machine bores through the hole to ensure the parallel and vertical alignment of the

shaft.

Key Role: It is mainly used for post-welding boring of both large and small arms and buckets, ensuring precision.

Dual-Side Boring: The double-sided boring machine allows for boring on both sides simultaneously, ensuring precise accuracy.

About Zhonghe Machinery Company Profile:

Kaiping Zhonghe Machinery Co.,Ltd. established in 2018, it is a combination of manufacturing and trading, specializing in customizing different kinds of excavator boom arms and attachments. We are located in cuishanhu New District. Kaiping cityJiangmen City. Guangdong Province, China. We boast a 21000m3 steel structure workshop with a large number of high precision processing equipment and a strong and cohesive team of over 100 experienced technical staff. 50 welding workers with over 7 years experience. 30 senior designers, and a high-tech R&D team(10+ years on customization.100+technical patents), strict production system(6+ years quality control and cost control) and warm-hearted service team. Our annual output of various types of excavator boom arms can reach up to 800 sets.



CE certification & Utility model patent certificates



Our products have been sold to more than 60 countries, and our transportation methods include sea transportation, land transportation, and air transportation. Our packaging is wooden box packaging or stretch film packaging. The goods will be packed before shipment and then loaded into the container to ensure the safety of the goods.

Packaging & Shipping



FAQ(Some frequently asked questions):

Q:What are the configurations of the rock arm?

A:1. Split rock arm configuration: one set of large and small arms, one arm cylinder, one bucket cylinder, one ripper, four high-pressure hoses, and seven pins.
 2. Integrated rock arm configuration: one set of large and small arms, four pins, four high-pressure hoses, and one arm cylinder

Q:How long does it usually take to produce a rock arm?

A:After the customer pays a 30% deposit, it usually takes 20-35 days to complete. We can deliver on time.

Q: Are you a factory?

Yes, we are a factory, we are in Kaiping City, Guangdong Province. We have a large factory with complete production equipment. There is also a large double-sided floor boring machine, which can produce rock arms and ensure that the rock arms are bored accurately with almost no error. Customers are welcome to visit our factory at any time

Q: What are your terms of payment?

A: We prefer T/T (50/50) through Ali Credit Insurance as a trial order.

Q: Are you always delivered on time?

A: We can't promise about the sea freight but what we can do is shorten our lead time while keeping the same quality level. So there will not be any problem even if the sea freight is delayed for a couple of days.

Any information, pls contact

Whatsapp: +86 18127591702

Wechat/Tel: 0086 18127591702

E-mail: sophia@excavatorboomarm.com



Jiangmen Kaiping Zhonghe Machinery Manufacturing Co., Ltd



+86 13822325403



aria@excavatorboomarm.com



excavatorlongarm.com

9 Huancui West Road, Cuishanhu New Area, Kaiping City, Guangdong Province, China