



Heavy Duty Excavator Eagle Beak Arm For Shale Excavation And Rock Breaking Efficiency

Our Product Introduction

for more products please visit us on excavatorlongarm.com

Basic Information

- Place of Origin: China
- Brand Name: ZH
- Certification: CE
- Model Number: JCB001
- Minimum Order Quantity: 1 SET
- Price: \$24000/set
- Packaging Details: Stretch film packaging
- Delivery Time: 20-30 working day
- Payment Terms: T/T
- Supply Ability: 600



Product Specification

- Condition: New, 100% new, New Long Reach Boom & Arm
- Warranty: 6 Months
- After-sales Service Provided: Online Support, Video Technical Support
- Bucket Capacity: 0.9m³, 0.4-0.5CBM, 0.2-6m³
- Machine Weight: 45-120T
- Color: Customer's Request
- Application: Crawler Excavator
- Material: Q355
- Type: Excavator Rock Arm/ Ripper Arm
- Brand: Zhonghe
- Highlight: Heavy Duty Excavator Rock Arm, Shale Excavation Excavator Rock Arm, Rock Breaking Efficiency Excavator Rock Arm



More Images



Excavator Eagle Beak Arm for Shale Excavation and Rock Breaking Efficiency



Excavator Rock Ripper Boom

1. The overall plate thickening treatment, the internal filling of high-density adamantine, the overall weight is heavier, the ratio is reasonable, can produce more digging force.
2. The enlarged arm cylinder and bucket cylinder can carry greater digging force without malfunctioning.
3. Rock arm and the ripper adopt gradual design, which concentrates all the digging force on the tip of the ripper teeth, and the crushing effect is better.
4. The entire boom arm is post-weld bored, achieving precision comparable to original arms, ensuring superior overall quality.

Any details, pls contact Ada.
Whatsapp/Tel: +86 15322105263
E-mail: abby@excavatorboomarm.com



What is an excavator rock ripper boom/rock boom?

An **excavator rock ripper boom** is a heavy duty tool that attaches to the excavator's arm, providing enhanced capabilities for rock excavation. The boom features a robust design and a ripper or breaker head, allowing the excavator to perform tasks that involve breaking and excavating solid rocks. This attachment is commonly used in industries like construction, demolition, and mining, where traditional equipment may struggle to handle tough terrain.

Excavator Rock Boom Seperate-arm Ripper & Rock Boom Mono-arm Ripper

Rock boom separte-arm ripper



Rock boom mono-arm ripper





Contact Ada---WA/Tel :0086 15322105263

Rock Boom Seperate-arm Ripper VS Rock Boom Mono-arm Ripper

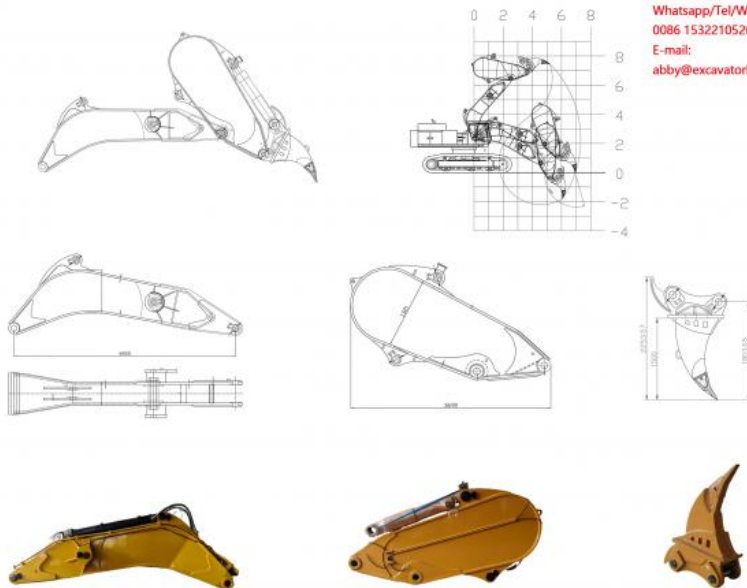
	Rock Boom Seperate-arm Ripper	Rock Boom Mono-arm Ripper
In weight	A 50-ton excavator weighs 21-22 tons	A 50-ton excavator weighs 17.5-19 tons
In appearance	The boom cylinder is no different from the standard boom cylinder, with single oil inlet and single oil return.	The arm and the ripper are integrated into one design, a one-piece style.

In stick cylinder	The boom cylinder is no different from the standard boom cylinder, with single oil inlet and single oil return.	The arm cylinder has double oil inlet and double oil return (it integrates the oil inlet and oil return of the bucket cylinder into the arm cylinder).
--------------------------	---	--

General Arrangement Drawing



Excavator Rock Boom Product Components



Whatsapp/Tel/Wechat:
0086 15322105263

E-mail:
abby@excavatorboomarm.com

Rock Boom and hydraulic line

Customized production of the boom that fits the main engine of the excavator, with hydraulic pipes road, you only need to prepare a main engine and boom cylinder.

Rock Arm

It is cut and welded from a whole piece of high manganese alloy steel the structure is compact and complete, and the actual shape is adjusted according to the model of the host

Rock Ripper

Customized production of the boom that fits the main engine of the excavator, with hydraulic pipes road, you only need to prepare a main engine and boom cylinder.



Product Description

WA: +86 15322105263

E-mail: abby@excavatorboomarm.com



Bucket cylinder is inverted

It effectively avoids damage to the piston rod caused by possible collisions during excavation, reduces use risks and saves maintenance costs.

Powerful Cylinders

Made of special designed sealing structure, strong power with long durability. stick cylinder has a piston rod of 140mm. It has large flow, high strength and stronger power.



High quality

The metal hydraulic pipeline adopts pickling and phosphating process to avoid impurities and rust, and protect the main pump from damage. The hydraulic hose is a Continental brand with high reliability.



Cylinder through-pin design

The process requirements are higher, the concentricity is higher, the wear is reduced, the life is longer and more durable.



Strong digging force.

The digging force is stronger, the operation is easier and the efficiency is higher. Single-sided pipeline design: The pipeline is visible during operation, effectively avoiding the risk of collision, reducing the risk of use, and saving maintenance costs.



Wear-resistant ripper teeth

The ripper has a protective device to prevent stones from hitting the cylinder, and its plate is very thick with strong reinforcement plates. We use Diamond brand D11 ripper teeth, the tooth seat is more wear-resistant and not easy to break.



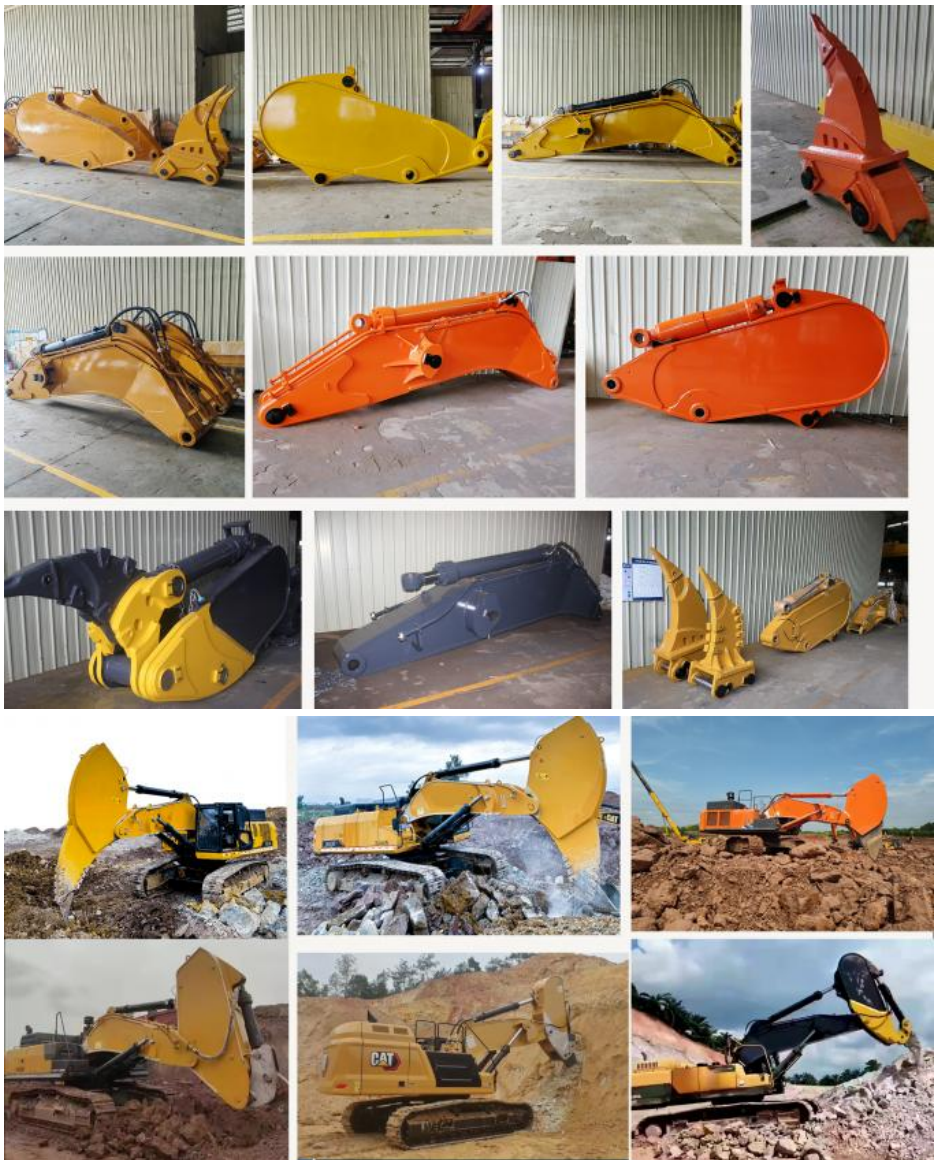
Suitable Working Conditions for Excavator Rock Arms:

Extreme Weather Conditions

Excavator rock arms are designed to operate in **extreme weather conditions**, including **freezing temperatures** or **high heat environments**. In these situations, the equipment must perform under stress, where the ground may be either frozen solid or subject to extreme heat that makes rock harder and more difficult to break. These arms are built to handle the temperature variations without compromising efficiency or durability.

Key features for extreme weather: Corrosion-resistant materials, heat-resistant hydraulic systems, and high-performance seals to protect from freezing or overheating.

Common use cases: Excavating frozen ground in colder climates, working in desert mining operations or other areas with high temperature variation.

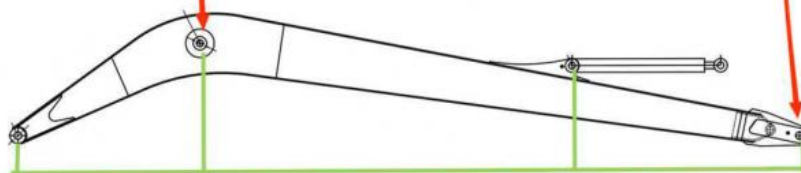


High precision machine of Zhonghe Machinery Manufacturers

Double-sided boring lathe



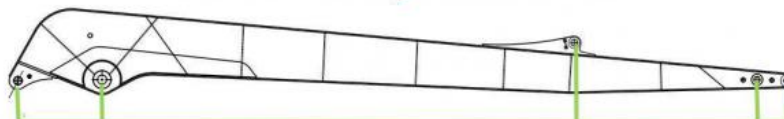
After the excavator boom and arm are assembled, the pins on the boom are drilled to ensure that the pins on the boom are parallel to each other and the cross section of the pin hole is perpendicular to the pin. The double-sided boring machine of the boom makes the hole position more accurate and the quality higher.



Make sure the cross section of the pin hole is perpendicular to the shaft.



Make sure the axis is parallel to the axis



Make sure the cross section of the pin hole is perpendicular to the shaft



Make sure the axis is parallel to the axis

Large floor-standing double-sided boring and milling machine:

Enhancing Precision and Consistency: The double-sided boring and milling machine improves the precision and uniformity of the process.

Post-Welding Bore Processing: After the welding process, the machine bores through the full hole, ensuring shaft

parallelism and vertical alignment.

Main Function: It is primarily used for boring arms and buckets of various sizes after welding, ensuring arm precision.

Dual-Side Boring Process: The double-sided lathe bores on both sides simultaneously, maintaining consistent accuracy on both ends.

About Zhonghe Machinery Company Profile:

Kaiping Zhonghe Machinery Co.,Ltd. established in 2018, it is a combination of manufacturing and trading, specializing in customizing different kinds of excavator boom arms and attachments. We are located in cuishanhu New District. Kaiping cityJiangmen City. Guangdong Province, China. We boast a 21000m3 steel structure workshop with a large number of high precision processing equipment and a strong and cohesive team of over 100 experienced technical staff. 50 welding workers with over 7 years experience. 30 senior designers, and a high-tech R&D team(10+ years on customization.100+technical patents), strict production system(6+ years quality control and cost control) and warm-hearted service team. Our annual output of various types of excavator boom arms can reach up to 800 sets.



CE certification & Utility model patent certificates



Our products have been sold to more than 60 countries, and our transportation methods include sea transportation, land transportation, and air transportation. Our packaging is wooden box packaging or stretch film packaging. The goods will be packed before shipment and then loaded into the container to ensure the safety of the goods.

Packaging & Shipping



FAQ(Some frequently asked questions):

Q:What are the configurations of the rock arm?

A:1. Split rock arm configuration: one set of large and small arms, one arm cylinder, one bucket cylinder, one ripper, four high-pressure hoses, and seven pins.
 2. Integrated rock arm configuration: one set of large and small arms, four pins, four high-pressure hoses, and one arm cylinder

Q:How long does it usually take to produce a rock arm?

A:After the customer pays a 30% deposit, it usually takes 20-35 days to complete. We can deliver on time.

Q: Are you a factory?

Yes, we are a factory, we are in Kaiping City, Guangdong Province. We have a large factory with complete production equipment. There is also a large double-sided floor boring machine, which can produce rock arms and ensure that the rock arms are bored accurately with almost no error. Customers are welcome to visit our factory at any time

Q: What are your terms of payment?

A: We prefer T/T (50/50) through Ali Credit Insurance as a trial order.

Q: Are you always delivered on time?

A: We can't promise about the sea freight but what we can do is shorten our lead time while keeping the same quality level. So there will not be any problem even if the sea freight is delayed for a couple of days.

Any information, pls contact Sophia!

this is my contact way directly

Sophia W/A: +86 18127591702

Mail: sophia@excavatorboomarm.com



Jiangmen Kaiping Zhonghe Machinery Manufacturing Co., Ltd



+86 13822325403



aria@excavatorboomarm.com



excavatorlongarm.com

9 Huancui West Road, Cuishanhu New Area, Kaiping City, Guangdong Province, China