



Pile Higher Excavator Pile Driver Attachment For CAT HITACHI KOMATSU

Our Product Introduction

for more products please visit us on excavatorlongarm.com

Basic Information

- Place of Origin: China
- Brand Name: Zhonghe Machinery
- Certification: CE, patent, ISO
- Model Number: DZB017
- Minimum Order Quantity: 1 set / piece
- Price: USD 199-USD 5999
- Packaging Details: bubble
- Delivery Time: 8-35/works
- Payment Terms: T/T, L/C
- Supply Ability: 7 sets per week



Product Specification

- Features: Longer Life-span & High Effective
- Pile: Steel Sheet Pile, Cement Pile
- Material: Premium Shaogang Q355B
- Warranty: 6 Moths
- Customization: Customization Service Available
- Length: 11m-24m
- Apply To: 20 Ton - 85 Ton Excavator
- Highlight: **CAT Excavator Pile Driver Attachment,
HITACHI Excavator Pile Driver Attachment,
KOMATSU Excavator Pile Driver Attachment**



More Images



Product Description

High effective Pile boom arm excavator pile driver arm for cat hitachi komatsu

Pile driving boom is a versatility tool in construction work. For example, for avoiding collapse, piling piles into the soil can prevent the collapsing.

Which perspective you can consider when you purchase one set of excavator piling arm?

* piling angle between big boom and small arm. The pile angle of piling boom and arm can affect the piling height.

Even the pile arm and pile boom looks the same, because our pile driving long reach boom's pile angle can reach about 160 degree, so our piling boom arm can pile higher and can pile different piles' length.

More details welcome to contact.



Steel sheet pile



Photovoltaic pile



Casing



U pile

Specifications of one set of piling boom and arm:

Excavator Model (ton)	Total Length (m)
20-24T	11-12m
25-28 T	12.5-13m

30-38 T	13.5m
36-39 T	15m
40-47 T	13-14.2m
40-50T	15-15.8m
45-52T	16.5-16.8m
47-52T	18-19m
65-85T	24m

24H service is available. Welcome to contact.

Some examples of pile driving boom:



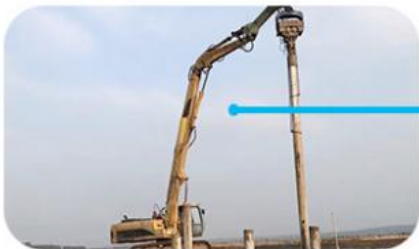
Some details of Excavator Pile Arm Excavator Pile Boom:



The back bushing of the arm is wrapped by the whole board to avoid falling off



Adopt 90 degree connectors to avoid hose bending and increase its service life



The angle of big boom and small arm can reach 160 degree--pile higher



The boom seat sleeve adopts all in one molding process



The upper and lower cover are thickened---longer service life-span



Four layers five passes welding
Strong welding not easy cracking



The box has built-in transverse and vertical reinforcement ribs to improve its tensile strength



Multi-layer reinforced plate at the stress place, more firm



The rubber sleeves are equipped on the pipelines--lessen vibration protect pipelines



Centralized lubrication system
--easy for later maintenance

Producing Details:

* We are arm with a professional and experienced team, 24h available for answering your questions.





Established in 2018, Kaiping Zhonghe Machinery is a combination of manufacturing and trading. Our products, including excavator long reach booms, demolition arms, 2-3 sections telescopic arms, tunnel arms, standard/rock buckets, grapples, and rippers, have been selling well in more than 40 countries and areas.

We are located in Guangdong Province, China. A 18000 m² 50 welding workers with over 7 years experience, 30 senior designers, and a high-tech R&D team (10+ years on customization, 100+ technical patents), strict production system (6+ years quality control and cost control) and warm-hearted service team. Our annual output of various types of excavator boom arms can reach up to 600 sets.

We strive to uphold our core principles of "Merit Quality, Sincerity Management, and Customer Satisfaction".



Welcome Perks Await.

Whatsapp: [+86 13822325403](https://wa.me/8613822325403)

Email: aria@excavatorboomarm.com
13822325403@163.com

Key word: construction bigmachine heavymachine MechanicalGrab HydraulicRotateGrab OrangePeelGrab BucketClamp DemolitionShear Ripper Rake CompactionWheel HydraulicPlateCompactor PileHammer HydraulicBreak QuickHitch GPBucket RockBucket TiltBucket SkeletonBucket CleanBucket MudBucket DitchBucket TrenchBucket ClamshellBucket slidingboom slidingarm arm boom slide demolition demolitionboom demolitionarm longboom longarm boom arm pile pilearm pileboom bucket mechanicalgrapple mechanicalgrab



Jiangmen Kaiping Zhonghe Machinery Manufacturing Co., Ltd



+86 13822325403



aria@excavatorlongarm.com



excavatorlongarm.com

9 Huancui West Road, Cuishanhu New Area, Kaiping City, Guangdong Province, China