

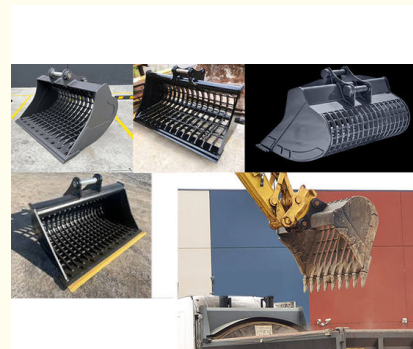


1 Ton 0.5cbm Construction Work Excavator Skeleton Bucket For Cat Hitachi Komatsu

Our Product Introduction

Basic Information

- Place of Origin: China, Guangdong
- Brand Name: Kaiping Zhonghe Machinery
- Certification: CE, patent, ISO
- Model Number: D0089
- Minimum Order Quantity: 1 set / piece
- Price: USD 199.00-USD899.00
- Packaging Details: bubble / wooden cases/other package
- Delivery Time: 5-25/works
- Payment Terms: T/T, L/C
- Supply Ability: 30 sets per week



Product Specification

- Situation: New
- Application: Screening Sand Rock
- Bucket Teeth: Customized According To Requirement
- Material: Shaogang Q355B
- Warranty: 3 Months
- Apply To: 1 Ton - 65 Ton Excavator
- Highlight: **1 Ton Excavator Skeleton Bucket, 0.5cbm Excavator Skeleton Bucket, Komatsu Mini Excavator Skeleton Bucket**



More Images



for more products please visit us on excavatorlongarm.com

Product Description

0.5cbm skeleton bucket excavator skeleton bucket for cat hitachi komatsu for construction work

Skeleton bucket introduction:

Excavator skeleton bucket is common used in separating the big and small materials.

In some construction work, skeleton rock bucket is needed which front part is with teeth.

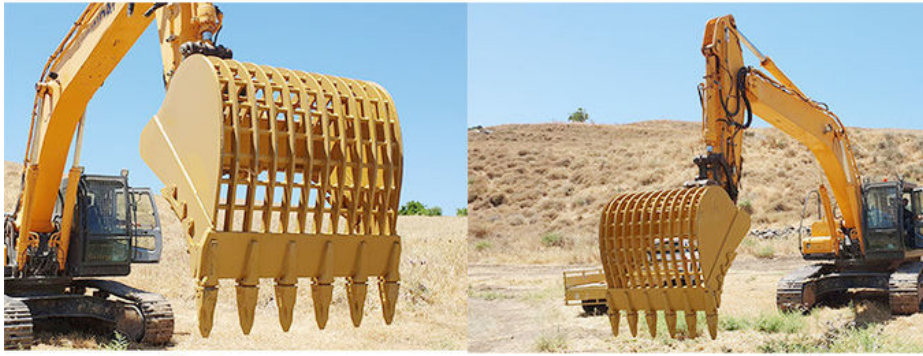
Excavator skeleton bucket for sale, we focus on the material use, the whole design, the weldings, and also the after-sales service.

Some specification of one sieve bucket:

bucket capacity (cbm)	excavator model (ton)
0.2	3-5T
0.25	5T
0.3	6T
0.35	7-8T
0.4	8-10T
0.45	11-12T
0.5	11-12T
0.6	12-15T
0.8	18-20T
1	20-22T
1.1	20-22T
1.2	22-24T
1.4	25-30T
1.5	30-35T
1.6	30-35T
1.8	36-40T

welcome to send your excavator model to us. Suitable bucket capacity available.





Beveling Machine
Every board will be
beveled before being
welded which enhances
the weld bead



Large floor-standing
double-sided boring
machine
Higher accuracy

Panel is cut by CNC
plasma machine with
less deformation





Established in 2018, Kaiping Zhonghe Machinery is a combination of manufacturing and trading. Our products, including excavator long reach booms, demolition arms, 2-3 sections telescopic arms, tunnel arms, standard/rock buckets, grapples, and rippers, have been selling well in more than 40 countries and areas.

We are located in Guangdong Province, China. A 18000 m² 50 welding workers with over 7 years experience, 30 senior designers, and a high-tech R&D team (10+ years on customization, 100+ technical patents), strict production system (6+ years quality control and cost control) and warm-hearted service team. Our annual output of various types of excavator boom arms can reach up to 600 sets.

We strive to uphold our core principles of "Merit Quality, Sincerity Management, and Customer Satisfaction".

Zhonghe Machinery Fairs



2023

Changsha International
Construction Equipment
Exhibition

2024

The 4th Guangxi Second-
hand Construction
Machinery Industry
Summit



[Welcome to contact for a big discount.](#)



Jiangmen Kaiping Zhonghe Machinery Manufacturing Co., Ltd



+86 13822325403



aria@excavatorboomarm.com



excavatorlongarm.com

9 Huancui West Road, Cuishanhu New Area, Kaiping City, Guangdong Province, China