



## Longer Life Span Mechanical Stone Grapple For CAT HITACHI KOMATSU SANY

Our Product Introduction

for more products please visit us on excavatorlongarm.com

### Basic Information

- Place of Origin: China, Guangdong
- Brand Name: Zhonghe Machinery
- Certification: CE, patent, ISO
- Model Number: JXZ003
- Minimum Order Quantity: 1 set / piece
- Price: USD 99.00-USD6900.00
- Packaging Details: bubble / wooden cases
- Delivery Time: 6-35/works
- Payment Terms: T/T, L/C
- Supply Ability: 15 sets per week

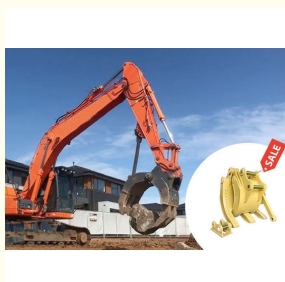


### Product Specification

- Color: Customized
- Quality: Premium Quality Wear Resistant
- Condition: New
- Apply To: 1 Ton - 65 Ton Excavator
- Application: Mechanical Grapple Grabbing Wood Log Stone
- Material: Q355B, NM400 Material
- Highlight: CAT Mechanical Stone Grapple,  
HITACHI Mechanical Stone Grapple,  
SANY Mechanical Stone Grapple



### More Images



## Product Description

Longer life-span High effective Mechanical stone grapple Mechanical Grapple mechanical excavator grapple for excavator grab mechanical grab for excavator

Brief introduction of mechanical grapple:

Mechanical grapple is common used in grabbing wood, stone, log etc. The main material of mechanical stone grapple is Shaogang Q355B which has better welding performance and not easy cracking. The welding of mechanical grapple is high guaranteed.

Several

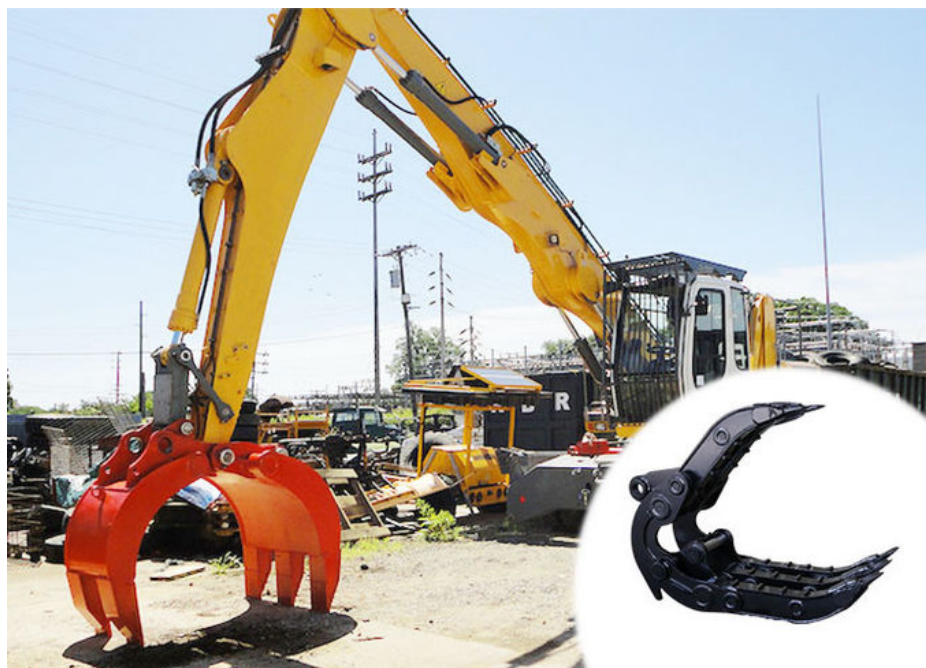
advantages of mechanical excavator grapple:

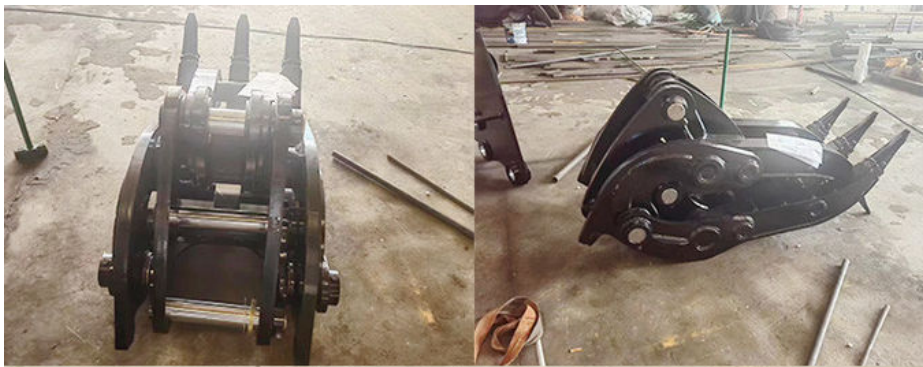
\* Longer life-span: the steel material is Q355B and the welding wires is Jinqiao Welding Wires, every plate is full beveled before welding which can enhance the welding performance.

\* High effective, versatility and practical.

\* customization service is always available, welcome to send your excavator model to us for double check

Excavator Model (ton)	Weight (kgs) / Opening (mm)
3-5T	300/1250
6-8T	500/1450
10-16T	550/1700
17-20T	950/1900
21-24T	950/2050
25-30T	1100/2200
31-35T	1300/2300
36-40T	1550/2400
41-45T	1700/2500





## Mechanical Grab



W / A: 0086 13822325403





## Mechanical Grab



W / A: 0086 13822325403

Production Advantages of Mechanical excavator grapple:

- \* ensure high-quality welding
- \* high accuracy
- \* high effective



**Beveling Machine**  
Every board will be beveled before being welded which enhances the weld bead



Large floor-standing  
double-sided boring  
machine  
Higher accuracy

Panel is cut by CNC  
plasma machine with  
less deformation



**Welcome to contact for a big discount!**



**Jiangmen Kaiping Zhonghe Machinery Manufacturing Co., Ltd**



+86 13822325403



aria@excavatorboomarm.com



excavatorlongarm.com

9 Huancui West Road, Cuishanhu New Area, Kaiping City, Guangdong Province, China