



CAT HITACHI KOBELCO Telescopic Arm Excavator 3 Ton - 55 Ton

Our Product Introduction

for more products please visit us on excavatorlongarm.com

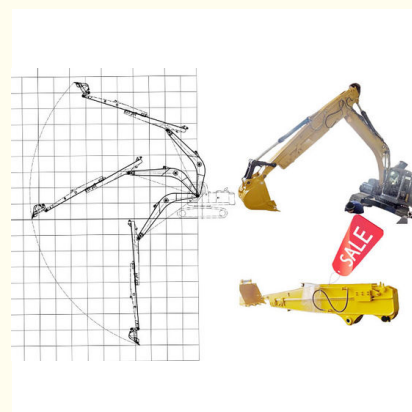
Basic Information

- Place of Origin: Guangdong China
- Brand Name: Zhonghe Machinery
- Certification: CE, patent, ISO
- Model Number: HB001
- Minimum Order Quantity: 1 set / piece
- Price: USD 200.00-USD8000.00
- Packaging Details: bubble, wooden case
- Delivery Time: 5-35/works
- Payment Terms: T/T, L/C
- Supply Ability: 8 sets per week



Product Specification

- Digging Depth: 4m, 8m, 10m, 12m
- Apply To: 3 Ton - 55 Ton
- Bucket Capacity: 0.1 Cbm - 1cbm
- Warranty: 6 Months
- Condition: New
- Material: Shaogang Q355B
- Highlight: CAT HITACHI KOBELCO Telescopic Arm Excavator, 55 Ton Telescopic Arm Excavator, 3 Ton Telescopic Arm Excavator



More Images



Product Description

Hitachi telescopic boom telescopic excavator long arm excavator telescopic for cat hitachi kobelco

10m telescopic boom telescopic excavator long arm excavator telescopic excavator arm excavator boom excavator sliding boom arm

Brief introduction of telescopic boom for excavators:

Premium material: Shaogang Q355B, better Q355B material than others, or others as you request

High effective: Two main plates of excavator sliding boom arm are cut from a whole plate. Double oil seal design prolong the service life of excavator telescopic arm.



Description of one set of telescopic dipper arm excavator boom arm:

Telescopic arm is operated by extending and retracting the telescopic cylinder. The cylinder is designed with double oil seal---longer life-span. The plates are full beveling before welding which has better performance.

Apply to: Digging foundation pit, narrow places.

Specifications:

| Excavator model(ton) | bucket capacity (cbm) | Maximum Digging Depth(m) |
|----------------------|-----------------------|--------------------------|
| 3-4 ton | 0.1 cbm | 4m |
| 6-8 ton | 0.2 cbm | 6m |
| 10-12 ton | 0.35cbm | 8m |

| | | |
|-----------|---------|-----|
| 20-27 ton | 0.5 cbm | 10m |
| 30-36 ton | 0.6 cbm | 12m |



Established in 2018, Kaiping Zhonghe Machinery is a combination of manufacturing and trading. Our products, including excavator long reach booms, demolition arms, 2-3 sections telescopic arms, tunnel arms, standard/rock buckets, grapples, and rippers, have been selling well in more than 40 countries and areas.

We are located in Guangdong Province, China. A 18000 m² 50 welding workers with over 7 years experience, 30 senior designers, and a high-tech R&D team (10+ years on customization, 100+ technical patents), strict production system (6+ years quality control and cost control) and warm-hearted service team. Our annual output of various types of excavator boom arms can reach up to 600 sets.

We strive to uphold our core principles of "Merit Quality, Sincerity Management, and Customer Satisfaction".



clamshell bucket



V type bucket



cleaning bucket



rock bucket



tilting bucket



standard bucket



Sliding arm

Telescopic arm

Telescopic arm

WhatsApp: 0086 13822325403



Long Reach Boom

Short Arm

Short Arm



Pile Arm

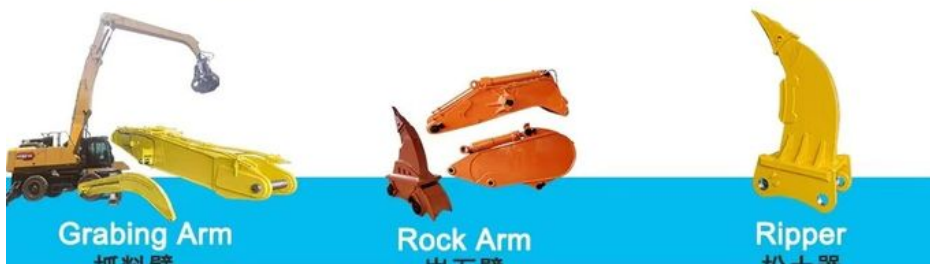
打桩臂

Demolition Arm

拆楼臂

Demolition Arm

拆楼臂



Grabbing Arm

抓料臂

Rock Arm

岩石臂

Ripper

松土器



Jiangmen Kaiping Zhonghe Machinery Manufacturing Co., Ltd



+86 13822325403



aria@excavatorboomarm.com



excavatorlongarm.com

9 Huancui West Road, Cuishanhu New Area, Kaiping City, Guangdong Province, China