

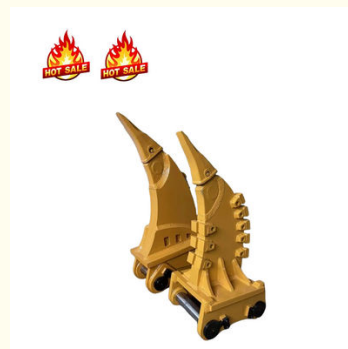
## Q355 Steel Heavy Equipment Excavator Root Ripper For Soil Ripping Solutions

Our Product Introduction

for more products please visit us on excavatorlongarm.com

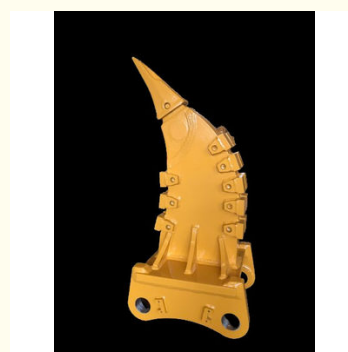
### Basic Information

- Place of Origin: China
- Brand Name: ZH
- Certification: CE
- Model Number: JCB001
- Minimum Order Quantity: 1 SET
- Price: \$5142/set
- Packaging Details: Stretch film packaging
- Delivery Time: 20-30 working day
- Payment Terms: T/T
- Supply Ability: 600



### Product Specification

- Condition: New, 100% new, New Excavator Ripper & Attachments
- Warranty: 6 Months
- After-sales Service Provided: Online Support, Video Technical Support
- Ripper Width: 240-800mm
- Machine Weight: 1.7-55T
- Color: Customer's Request
- Application: Crawler Excavator
- Material: Q355B
- Type: Excavator Attachments
- Ripper Length: 320-1000mm
- Highlight: Q355 Steel Excavator Root Ripper, Heavy Equipment Excavator Root Ripper, Excavator Root Ripper For Soil Ripping



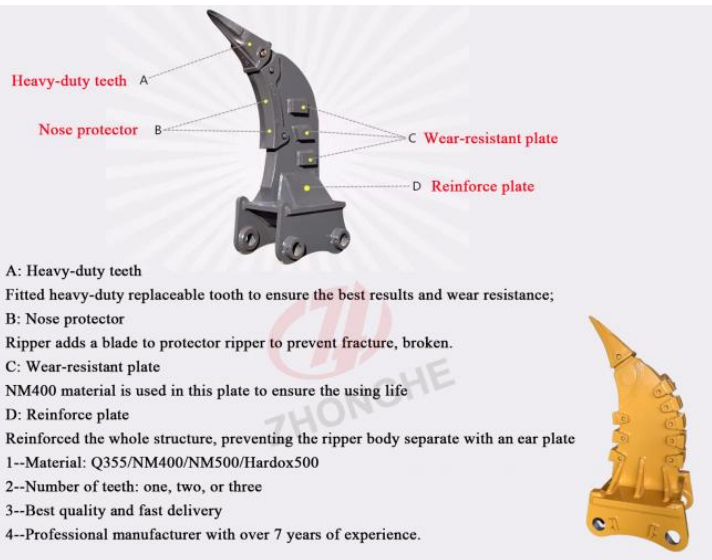
### More Images



### Product Description

China excavator ripper manufacturer Excavator ripper for sale in Europe  
Excavator soil ripping solutions

Our Product



### Excavator Rock Ripper Key Features:

An excavator rock ripper is a specialized attachment designed to be fitted onto an excavator to break up hard ground, rock, or other tough materials.

**High-Strength Materials:** Made from durable alloys to withstand harsh working conditions.

**Pointed Tooth Design:** Specially shaped for improved penetration into tough rock layers.

**Integrated Hydraulic System:** Designed to leverage the excavator's hydraulics for enhanced power.

**Low Vibration Technology:** Reduces operator fatigue and improves precision during use.

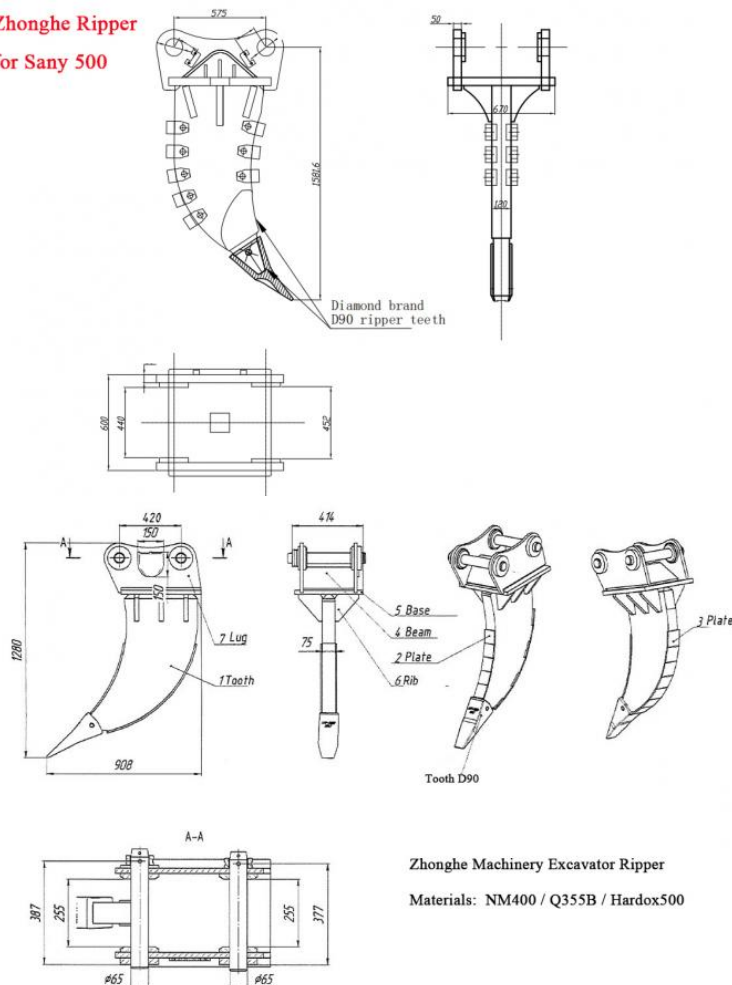
**Flexible Functionality:** Suitable for a variety of industries, including construction and demolition.

**Effortless Attachment:** Features a user-friendly design for quick mounting on excavators.

**Optimized Center of Gravity:** Engineered for better balance and stability during operation.

### Some reference data of excvator rock ripper:


**Zhonghe Ripper  
for Sany 500**




Model (ton)	Weight (kgs)	Thickness (mm)
3-5	260	50
6-10	380	60
11-16	450	80
17-20	510	100
21-24	600	100
25-30	700	100
31-35	820	100

36-40	870	100
41-45	920	100
46-50	970	100


## Product details of excavator rock ripper






**Zhonghe Machinery Factory**  
**Heavy Duty Rock Ripper**

Excavator rock ripper has two types, one is single-toothed type, another is multi-toothed type. It has concentrated digging power with easy bucket teeth replacement. What's more, the design ensures that the main body is effectively protected and has longer life-span. Rock ripper has super power in digging hard earth, weathering rock and gravel. Breaking large stones into crushed stones can facilitate the loading and unloading of bucket.




**Heavy-duty Teeth**

Each ripper has an easily interchangeable leading ripper tooth. Equipped with heavy-duty replaceable teeth to ensure optimal results and wear resistance.




**Heavy Duty Reinforce Plate**

Reinforced the whole structure, prevent the ripper body separate with ear plate. It can enhance product life.



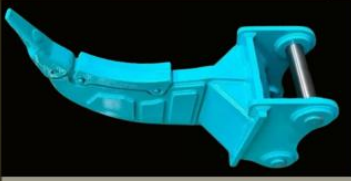
**Nose Protector**

Zhonghe ripper add a blade to protector ripper to prevent fracture, broken. We added a strong reinforcement plate, the plate thickness is very thick and more wear-resistant.




**Excellent material**

Using Q355 and NM400 manganese plate steel materials, high-strength, corrosion resistance. The ripper has high wear resistance, high working efficiency and extended service life.



**High quality pins**

The pin shaft is made of 42CrMo alloy steel; built-in oil passage, high strength and good toughness.



**Support ODM and OEM.**

The appearance and color of our tillers can be customized. Just tell us your product requirements and we will provide specific drawings. Single-tooth, two-tooth, and three-tooth tillers can be produced.

Applicable objects: Loosening operations in harder soil layers, frozen soil layers, soft rocks, weathered rocks and other geological conditions

### Notable features of the excavator rock ripper:

Made from Q355 manganese plate steel, providing high strength and excellent corrosion resistance. The pin shaft consists of 42CrMo alloy steel, characterized by its remarkable toughness and strength. Uses standard cast bucket teeth, designed at optimal angles for loosening soil effectively. These teeth can be easily replaced as they are available as wearing parts and are fixed with bayonet pins for hassle-free replacement. The main body's front end includes a standard cast guard plate, ensuring protection for the ripper's mainboard during challenging operations. The fixing method is user-friendly for quick replacement. On either side of the mainboard, irregular guard plates are welded for added protection, providing durability. At Zhonghe Machinery, our goal is to achieve excellence in meeting our customers' needs.

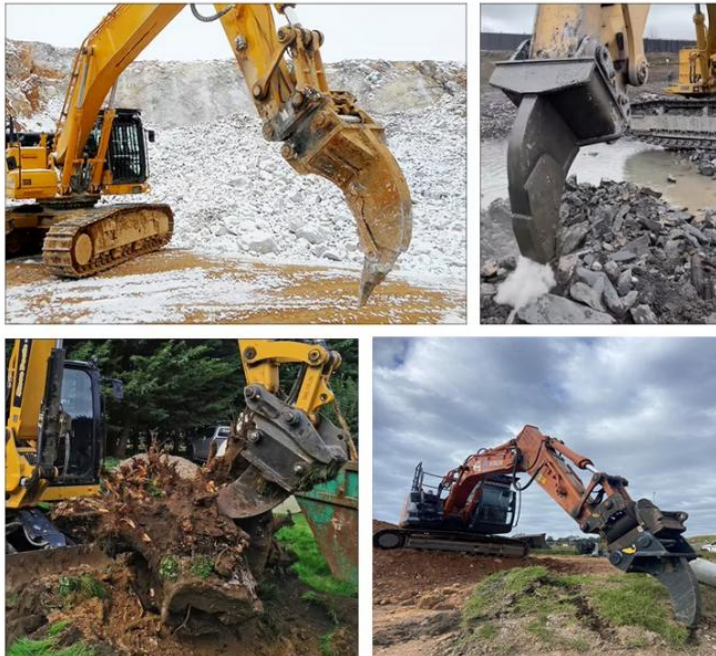
## Working Scene of Excavator Rock Ripper



Special for the mantle rock, clay, sandy stratum and weathered layer.

Ripper is used for digging hard soil, frozen soil, soft rock, weathered rock and cracked rock.

Ripper also can remove the root of the trees and other barriers.



### Applications of an excavator rock ripper:

**Mining:** Vital for breaking hard rock in various mining environments.

**Construction Sites:** Employed for preparing sites that involve tough soil conditions.

**Trenching for Utilities:** Ideal for digging trenches for pipelines and electrical cables.

**Roadway Excavation:** Assists in removing obstacles and preparing roads for construction.

**Building Demolition:** Used in the demolition of structures with rock-solid foundations.

**Land Preparation:** Aids in preparing land for agricultural or development purposes.

**Rock Extraction:** Essential in quarry operations for the efficient extraction of rock.

Our (mechanical beveling)



Other factories (manual bevel)



VS

### What is the purpose of a long arm plate bevel?

The purpose of a long arm plate bevel is to facilitate the welding process, ensuring a stronger and more reliable weld that extends through the full thickness of the material. Here are the key reasons for using a bevel on a long arm plate:

**Improved Weld Penetration:** As you mentioned, welding machines typically have a depth of fusion that is less than the

thickness of the plate. A bevel allows the welding arc to reach further into the material, achieving better penetration and ensuring that the weld fills the entire joint.

**Preventing Weld Cracking:** Without a bevel, the weld may not penetrate fully, leaving a weak spot in the weld that could lead to cracking under stress. A proper bevel ensures that the weld is continuous and free of defects that could cause future failures.

**Reducing Welding Time:** A beveled edge can reduce the amount of material that needs to be melted, which can decrease the time required to complete the weld.

**Enhancing Weld Quality:** The bevel provides a consistent edge for the welder to work with, which can lead to a more uniform and aesthetically pleasing weld.

**Mechanical vs. Manual Beveling:** Mechanically cutting bevels is generally more precise than manual methods. This precision is critical for ensuring the quality of the weld. A mechanically cut bevel provides a cleaner, more uniform edge that can be more easily and consistently welded.

Factories that use mechanical beveling over manual beveling often produce products with higher quality and consistency. The mechanical process reduces human error and provides a more reliable bevel that is critical for structural integrity, especially in heavy-duty equipment like excavator long arm plates.

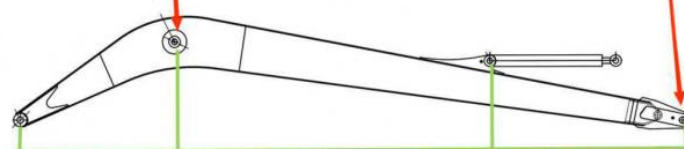
**We make bevels mechanically, while other factories make bevels manually (as shown in the picture)**

## High precision machine of Zhonghe Machinery Manufacturers

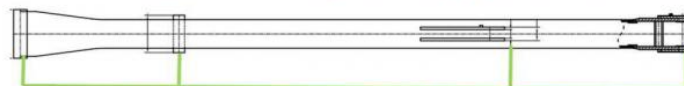
### Double-sided boring lathe



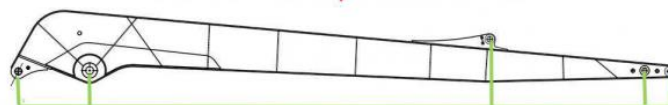
After the excavator boom and arm are assembled, the pins on the boom are drilled to ensure that the pins on the boom are parallel to each other and the cross section of the pin hole is perpendicular to the pin. The double-sided boring machine of the boom makes the hole position more accurate and the quality higher.



Make sure the cross section of the pin hole is perpendicular to the shaft.



Make sure the axis is parallel to the axis



Make sure the cross section of the pin hole is perpendicular to the shaft



Make sure the axis is parallel to the axis

## Large Floor-Standing Double-Sided Boring and Milling Lathe:

**Improved Accuracy and Consistency:** The double-sided boring and milling lathe enhances the precision and uniformity of operations, ensuring consistent results.

**Post-Welding Processing:** After the welding process, the machine performs overall boring, ensuring the parallelism and perpendicularity of shaft holes.

**Primary Applications:** Primarily used for post-weld boring of the boom, small arm, and bucket, ensuring the accuracy and proper alignment of the boom.

**Simultaneous Boring on Both Sides:** The lathe performs boring on both sides at the same time, guaranteeing identical precision and consistency on both sides.

## About Zhonghe Machinery Company Profile:

Kaiping Zhonghe Machinery Co., Ltd., established in 2018, is dedicated to customizing excavator booms and accessories. Our manufacturing facility in Jiangmen City features a 21,000 m<sup>3</sup> steel structure workshop with cutting-edge processing technology. Our skilled workforce includes over 100 technicians, 50 welders with significant experience, and 30 senior designers. With an innovative R&D team holding over 100 patents, we uphold rigorous quality controls, capable of producing approximately 800 units each year.



## CE certification & Utility model patent certificates



Our products have been exported to over 60 countries, utilizing various transportation methods such as sea, land, and air freight. For packaging, we use either wooden crates or stretch film to secure the products. Before shipment, the goods are carefully packaged and then loaded into containers to ensure their safety during transit.

## Packaging & Shipping



### FAQ(Some frequently asked questions):

**Q: Are you a manufacturer?**

**A:** Zhonghe machinery offered a wide range of attachment parts for excavators and dozers. Such as long reach arm, demolition arm, telescopic arm, standard bucket, rock bucket, cleaning bucket, tilting bucket, etc. We know that the perfect combination of high-quality cast steel products and a moderate price is the key to the success.

**Q: What material is the excavator rock ripper made of?**

**A:** Made of Q355 manganese plate steel, it is high in strength and corrosion-resistant; We also can use NM400 materials. The pin shaft is made of 42CrMo alloy steel, which is high in strength and toughness.

**Q: Why choose Zhonghe over other companies?**

**A:** We offer a highly skilled production and design team that delivers high-quality, customized solutions tailored to each customer's needs. Our commitment to precision and customer service has earned us a strong reputation in China, with annual sales consistently ranking among the top in the industry.

**Q: What are your terms of payment?**

**A:** We prefer **T/T (50/50)** payment terms, and for trial orders, we recommend using **Ali Credit Insurance** for added security.

Any information, pls contact Ada!!!!

Whatsapp: +86 15322105263

Wechat/Tel: 0086 15322105263

E-mail: [abby@excavatorboomarm.com](mailto:abby@excavatorboomarm.com)



**Jiangmen Kaiping Zhonghe Machinery Manufacturing Co., Ltd**



+86 13822325403



[aria@excavatorboomarm.com](mailto:aria@excavatorboomarm.com)



[excavatorlongarm.com](http://excavatorlongarm.com)

9 Huancui West Road, Cuishanhu New Area, Kaiping City, Guangdong Province, China