



Q355B Excavator Extension Arm Telescopic Boom Hydraulic Sliding Arm For Deep Wells

Our Product Introduction

for more products please visit us on excavatorlongarm.com

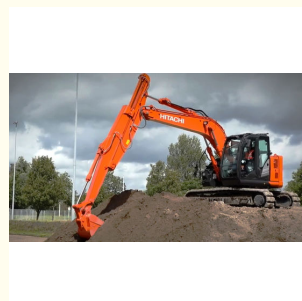
Basic Information

- Place of Origin: China
- Brand Name: Zhonghe Machinery
- Certification: CE, patent, ISO
- Model Number: CLB0024
- Minimum Order Quantity: 1 set / piece
- Price: USD \$3571/sets
- Packaging Details: bubble / wooden cases
- Delivery Time: 20-30/works
- Payment Terms: T/T, L/C
- Supply Ability: 800 sets



Product Specification

- Product Name: Sliding Arm
- Suitable: 3-36Ton
- Usage: Excavator Work
- Material: Q355B
- Color: Customer Required
- Condition: New
- Certification: CE
- MOQ: 1 Set
- Length: 4-12M
- Applicable Industries: Construction Works, Energy & Mining
- Showroom Location: Indonesia
- Highlight: Q355B Excavator Extension Arm, Hydraulic Telescopic Boom For Deep Wells, Hydraulic Sliding Arm For Excavator



More Images



Product Description

Excavator Extension Arm Excavator Telescopic Boom Excavator Reach Boom Hydraulic Sliding Arm for Excavator Applications



Our Product Introduction

Telescopic Boom/Sliding Arm Overview

The **sliding arm** is designed for excavating deep wells, foundation pits, tunnels, sewage pipelines, and various municipal projects.

Founded in **2018**, our company boasts over **6 years** of industry expertise. Our production line engineers possess more than **10 years** of experience in designing and customizing **long arms** for diverse excavator brands.

This product is compatible with all **excavator models**, and we offer **OEM services** as well. Our **advanced manufacturing process** ensures that our technology aligns with global standards.

We possess the installation specifications for most excavators and can customize this **long arm** specifically for your machine. Prior to welding, a large milling machine is utilized to **mill** the edges of the steel plate (taper processing), allowing the welding to penetrate deeper into the steel, enhancing structural integrity. **Reinforcement plates** are added internally for added strength.

If required, we can include **additional pipes** to support specific applications.

You can utilize your original **arm cylinder** with our long boom to minimize costs; however, if you require a new cylinder, we can provide one for you.

Certain components can be reinforced with **thicker plates** or an additional plate for **heavy-duty applications**.

We employ **shielded gas welding**, using a mixture of **80% argon** and **20% carbon dioxide** as the shielding gas, which is considered the gold standard.



Advantages Excavator Telescopic Boom Long Boom



Built-in antiwear plastic slider for easy replacement and maintenance

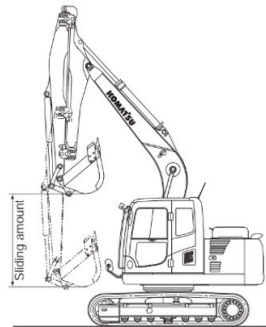
Plate thickness: 20mm

The double oil seal design for the telescopic cylinder prolongs its service life

Double limit design to reduce cylinder pulling and cylinder shaking

The whole plate is cut, not spliced, so as to be more firm and not easy to deform

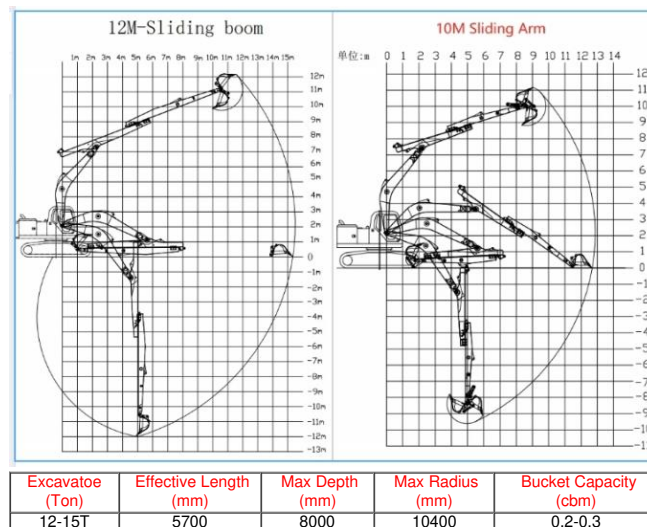
Steel sliders are welded between the skateboards to avoid direct contact wear



EXCAVATORS WITH A TELESCOPIC ARM (UPPER ARM SLIDING TYPE)

1. Thanks to the **hydraulic sliding system** in this model, the arm contracts and expands ('telescopes') speedily, **providing high working efficiency**.
2. Sliding mechanisms using rollers on the slide surfaces makes adjustment easy and prevents vertical and horizontal vibrations of the arm, **which in turn minimises the wear which shortens arm life**.
3. With the arm extended, the excavator can dig to the same depth as machines three (3) classes higher, so this becomes a useful attachment for restricted job sites where a **wide working range is needed**.
4. In addition, **slope-finishing work can also be done with ease**.

Some size references



20-25T	9150	10000	13000	0.4-0.7
20-25T	11000	12000	15200	0.4-0.7
30-35T	11000	12000	15800	0.6-0.9
40-45T	12100	16000	19200	0.8-1.3

Product Details of Telescopic Arm

Excavator Sliding Arm 8-12M



Advantages of Sliding Arm

Advantage 1:

Built-in wear-resistant plastic slider for easy replacement and maintenance.



Advantage 2:

Double limit design reduces cylinder pull and cylinder vibration

Advantage 3:

Plate thickness 20mm.

Cut as a whole rather than spliced, it is stronger and less likely to deform.



Advantage 4:

Telescopic cylinder double oil seal design extends the service life of the cylinder.

Advantage 5:

Steel plate sliders are designed between the sliders to avoid direct contact and wear of the sliders.



More details, pls contact Ada 

Whatsapp/Tel/ Wechat: 0086 15322105263

E-mail: abby@excavatorboomarm.com

What is the purpose of beveling the long arm/tunnel arm plate?

Most welding machines commonly used in the industry have a penetration depth of only 3mm. Since the thickness of our long arm plate is at least 8mm, without beveling, the welder would not be able to fully penetrate through the entire joint. This would result in weak welds, leading to issues such as weld cracking in the future.

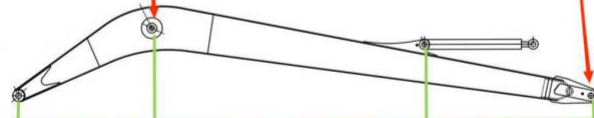
We employ mechanical beveling, whereas other factories rely on manual beveling (as shown in the figure).

High precision machine of Zhonghe Machinery Manufacturers

Double-sided boring lathe



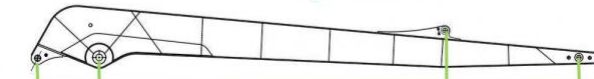
After the excavator boom and arm are assembled, the pins on the boom are drilled to ensure that the pins on the boom are parallel to each other and the cross section of the pin hole is perpendicular to the pin. The double-sided boring machine of the boom makes the hole position more accurate and the quality higher.



Make sure the cross section of the pin hole is perpendicular to the shaft.



Make sure the axis is parallel to the axis



Make sure the cross section of the pin hole is perpendicular to the shaft



Make sure the axis is parallel to the axis

Large Floor-Standing Double-Sided Boring and Milling Lathe:

Improved Accuracy and Consistency: The double-sided boring and milling lathe enhances the precision and uniformity of operations, ensuring consistent results.

Post-Welding Processing: After the welding process, the machine performs overall boring, ensuring the parallelism and perpendicularity of shaft holes.

Primary Applications: Primarily used for post-weld boring of the boom, small arm, and bucket, ensuring the accuracy and proper alignment of the boom.

Simultaneous Boring on Both Sides: The lathe performs boring on both sides at the same time, guaranteeing identical precision and consistency on both sides.

About Zhonghe Machinery Company Profile:



Kaiping Zhonghe Machinery Manufacturing Co., Ltd.

Established in 2018, Kaiping Zhonghe Machinery Co., Ltd. specializes in producing customized excavator booms and accessories. Our facility in Kaiping City encompasses a 21,000 m³ steel workshop with state-of-the-art equipment. Our workforce includes over 100 experienced technicians, 50 welders, and 30 senior designers. With a high-tech R&D team holding over 100 patents, we ensure top-notch quality control, capable of producing approximately 800 sets each year.

CE certification & Utility model patent certificates



Our products have been exported to over 60 countries, utilizing various transportation methods such as sea, land, and air freight. For packaging, we use either wooden crates or stretch film to secure the products. Before shipment, the goods are carefully packaged and then loaded into containers to ensure their safety during transit.

Packaging & Shipping



FAQ(Some frequently asked questions):

Q1: Are you a manufacturer?

A1: Yes, Zhonghe Machinery specializes in a wide range of excavator attachments, including long reach arms, demolition arms, and various bucket types. We believe that combining high-quality cast steel products with a moderate price is crucial for success.

Q2: How long is the sliding arm for a conventional 20-ton excavator machine?

A2: The 9-meter sliding arm in our price list can dig to over 8 meters, or nearly 9 meters, without pressing down, as our customers refer to it.

Q3: What length does the 10-meter sliding arm in our product price list refer to?

A3: The 10-meter measurement indicates the maximum digging depth of more than 10 meters, not the actual length of the arm.

Q4: What are the advantages of our sliding arm?

A4: First, the double limit design reduces oil cylinder vibration. Second, we use a wear-resistant block design, enhancing longevity and simplifying maintenance. Third, it is versatile, utilizing more original accessories to reduce costs. Finally, our cylinders have double-layer oil seals to minimize failure rates.

Any information, pls contact

Whatsapp: +86 18127591702
Wechat/Tel: 0086 18127591702
E-mail: sophia@excavatorboomarm.com



Jiangmen Kaiping Zhonghe Machinery Manufacturing Co., Ltd



+86 13822325403



aria@excavatorboomarm.com



excavatorlongarm.com

9 Huancui West Road, Cuishanhu New Area, Kaiping City, Guangdong Province, China