



## 0.25-4.5cbm Heavy Duty Rock Bucket For Komatsu Excavators Heavy Equipment

Our Product Introduction

for more products please visit us on [excavatorlongarm.com](http://excavatorlongarm.com)

### Basic Information

- Place of Origin: China
- Brand Name: Zhonghe Machinery
- Certification: CE, patent, ISO
- Model Number: CLB0024
- Minimum Order Quantity: 1 set / piece
- Price: USD \$500-12800/sets
- Packaging Details: bubble / wooden cases
- Delivery Time: 20-30/works
- Payment Terms: T/T, L/C
- Supply Ability: 800 sets



### Product Specification

- Material: Q355B, Q690D, Or Others As You Request
- Apply To: 6-100ton Excavator
- Warranty: 6 Months
- Condition: New
- Color: As Customer Requires
- Application: Excavator
- Weight: 320-5600KGS
- Certification: ISO9001, ISO CE
- Oem: Available
- After-sales Service Provided: Online Support, Video Technical Support
- Technique: Advanced Techniques
- Oem/odm: Acceptable
- Capacity: 0.25-4.5 Cbm
- Highlight: **4.5cbm Heavy Duty Rock Bucket,**



### More Images



## Product Description

## Heavy-Duty Rock Bucket for Komatsu Excavators - Durable Excavation Solutions Heavy Duty Excavator Bucket

## I. Features of Excavator Rock Bucket

**High-Performance Design:** Constructed from heavy-duty materials for outstanding performance in tough conditions.  
**Aggressive Tooth Configuration:** Equipped with aggressive teeth for effective rock penetration and material handling.  
**Various Size Options:** Available in a range of sizes to fit different excavator types and tasks.  
**Increased Material Handling Capacity:** Optimized design allows for larger loads, enhancing productivity.  
**Long-Lasting Durability:** Built with wear-resistant features to ensure longevity in challenging environments.  
**Streamlined Maintenance:** Engineered for easy maintenance and part replacement.

## II. Details of Excavator Rock Bucket



## Zhonghe Machinery Heavy Duty Rock Bucket



Improve your productivity with our Heavy Duty Rock Buckets (also known as Digging Buckets or Heavy Duty Buckets). Our Rock Buckets are unique in their extensive wear protection, high penetration teeth, fully integrated head mounts and dual radius design to ensure high strength capabilities and maximum attachment life. The new and improved design of our Rock Buckets is overall stronger and safer than other buckets on the market.

More details, pls contact Ada.

Whatsapp/Tel/Wechat: 0086 15322105263

E-mail: abby@excavatorboomarm.com



### High Penetration Rock Teeth

Allows easy penetration & even wear over time. This helps to maintain optimal performance in tough conditions, for more consistent on-site productivity.



### Reinforced Wear Protection

Protection in high-contact areas, including reinforced side plate and side cutter with added sidewall chocks, floor strips and gussets; This protects the bucket from ongoing wear and unnecessary maintenance.



### Fully integrated Head Bracket

Head bracket integrated into torsional bar with reinforced gussets to enhance structural integrity and long-term performance. This prevents deformation from torsional stress.



### Double-layer wear-resistant plate

The bottom plate is made of wear-resistant material, and double-layer wear-resistant plate is added to extend the service life. NM360, Hardox500, Q355B and other materials are optional.



### Dual Radius Design

Reducing drag and maximising breakout to increase digging efficiency and maximising bucket lifespan.



### Superior Bulk Dynamics & Improved Geometry

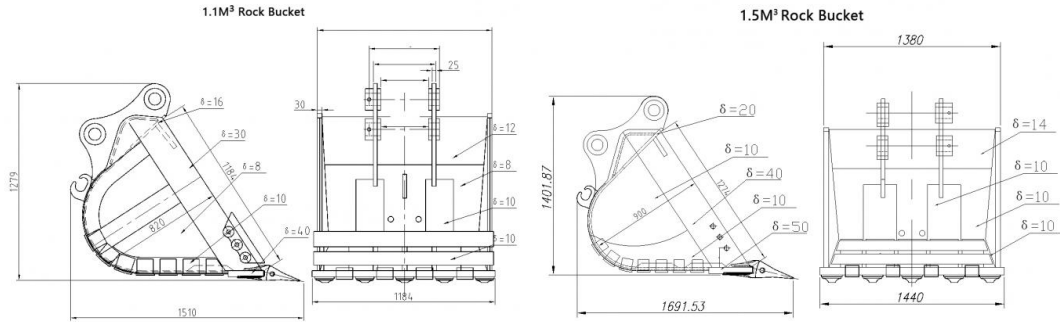
Increased loading capacity and reduced drag for optimised production efficiency to save time and reduce job timelines.

## Advantages of Excavator Rock Bucket

1. Sidewall with anti-collision block guard, reduce weariness
2. Adopt DIAMOND bucket teeth and teeth base
3. Anti-wear teeth base blocks
4. Materials: NM360, Hardox500, Q355B optional
5. Add wear resistance blocks
6. Double-layer wear-resistant plate to reinforce
7. The overall opening is narrow, designed according to the original design of Cat bucket, which improves the excavation force and is suitable for stonework.



## Excavator Heavy Duty Bucket Parameter Reference



Bucket capacity (M3)	excavator model (Ton)	weight (KG)
0.8m3	18-20T	860kg
1.2	20-22T	1200kg
1.3	22-25T	1300kg
1.4-1.7	30-35T	1850kg
1.8	35-38T	2000kg
2-2.5m3	40-45T	2500kg
2.6-2.7	45-50T	3000kg
3-3.3.8	50-90T	6000kg
4-4.5	70-90T	854800kg

If you need other sizes or more details, please feel free to contact us!!!

Whatsapp: [+86 15322105263](https://wa.me/8615322105263)

Wechat/Tel: 0086 15322105263

E-mail: [abby@excvatorboomarm.com](mailto:abby@excvatorboomarm.com)

### III. Describing the working conditions suitable for an excavator rock bucket



## Zhonghe Machinery Heavy Duty Rock Bucket



**Quarry Extraction:** Best suited for quarry extraction, where tough rock is prevalent.

**Mining Operations:** Effective for mining operations requiring robust rock handling.

**Demolition Work:** Ideal for demolition work involving rock and concrete removal.

**Construction Excavation:** Suitable for construction sites needing heavy excavation capabilities.

**Rugged Environments:** Perfect for rugged environments where traditional buckets struggle.

**Land Clearing Projects:** Useful for land clearing that involves rocky soil and debris.

**Road Development:** Designed for road development tasks involving rock excavation.

**Rock Handling:** Excellent for rock handling and removal tasks.

□

### What is the purpose of beveling the long boom arm plate?

Most welding machines commonly used in the industry have a penetration depth of only 3mm. Since the thickness of our long arm plate is at least 8mm, without beveling, the welder would not be able to fully penetrate through the entire joint. This would result in weak welds, leading to issues such as weld cracking in the future.

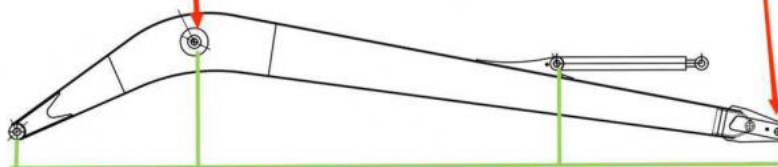
We employ mechanical beveling, whereas other factories rely on manual beveling (as shown in the figure).

### High precision machine of Zhonghe Machinery Manufacturers

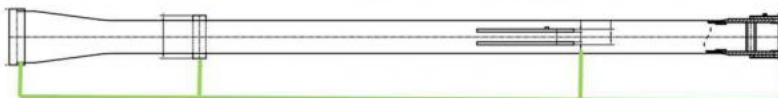
## Double-sided boring lathe



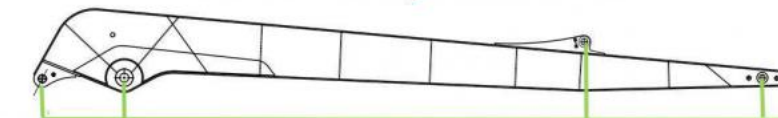
After the excavator boom and arm are assembled, the pins on the boom are drilled to ensure that the pins on the boom are parallel to each other and the cross section of the pin hole is perpendicular to the pin. The double-sided boring machine of the boom makes the hole position more accurate and the quality higher.



Make sure the cross section of the pin hole is perpendicular to the shaft.



Make sure the axis is parallel to the axis



Make sure the cross section of the pin hole is perpendicular to the shaft



Make sure the axis is parallel to the axis

### Large Floor-Standing Double-Sided Boring and Milling Lathe:

**Improved Accuracy and Consistency:** The double-sided boring and milling lathe enhances the precision and uniformity of operations, ensuring consistent results.

**Post-Welding Processing:** After the welding process, the machine performs overall boring, ensuring the parallelism and perpendicularity of shaft holes.

**Primary Applications:** Primarily used for post-weld boring of the boom, small arm, and bucket, ensuring the accuracy and



proper alignment of the boom.

**Simultaneous Boring on Both Sides:** The lathe performs boring on both sides at the same time, guaranteeing identical precision and consistency on both sides.

## About Zhonghe Machinery Company Profile:



### Kaiping Zhonghe Machinery Manufacturing Co., Ltd.

Kaiping Zhonghe Machinery Co., Ltd., established in 2018, specializes in customized excavator booms and attachments. Located in Jiangmen City, Guangdong, our workshop covers 21,000 m<sup>3</sup> and houses advanced processing machinery. Our team of over 100 experienced technicians, 50 welders, and 30 senior designers work cohesively. With an innovative R&D department holding over 100 patents, we maintain strict production standards, producing around 800 units every year.

## CE certification & Utility model patent certificates



Our products have been exported to over 60 countries, utilizing various transportation methods such as sea, land, and air freight. For packaging, we use either wooden crates or stretch film to secure the products. Before shipment, the goods are carefully packaged and then loaded into containers to ensure their safety during transit.

## Packaging & Shipping



### FAQ(Some frequently asked questions):

**Q: Are you a manufacturer?**

A: We are a manufacturer/supplier of excavator arms and attachments. We have a super large factory. The factory area is several times that of our competitors. It is the largest excavator attachment factory in Guangdong Province. It has complete production equipment and its products have been exported to more than 60 countries around the world.

**Q: Why choose Zhonghe over any other companies?**

A: We have a professional production team and design team to provide each customer with high-quality and personalized customer service to ensure correctness, so we have good reputation in China, and our annual sales are among the best in our country.

**Q: What can I get from you?**

- A: 1. The product is made of Q355B steel, a superior and sturdy material on the market, and the steel is cut with a 45-degree slope and then gas welded, making it more sturdy and 30% longer lifetime than normal materials.
2. All accessories are included, no additional purchases are required. Professional online video guides installation to make installation worry-free.
3. Lifetime free online customer service consultation if you have any questions.

**Q: How do I start to order?**

A: Firstly, talk to our sales about your machine model, working conditions, special needs and deadline. Then our sales will give you proposals FYR. You will receive a quotation ASAP after confirming the proposal.

**Q: What are your terms of payment?**

A: We prefer T/T (50/50) through Ali Credit Insurance as a trial order.

**Q: Are you always delivered on time?**

A: We can't promise about the sea freight but what we can do is shorten our lead time while keeping the same quality level. So there will not be any problem even if the sea freight is delayed for a couple of days.

Any information, pls contact Ada!!!!

Whatsapp: [+86 15322105263](https://wa.me/8615322105263)

Wechat/Tel: 0086 15322105263

E-mail: [abby@excavatorboomarm.com](mailto:abby@excavatorboomarm.com)



**Jiangmen Kaiping Zhonghe Machinery Manufacturing Co., Ltd**



+86 13822325403



[aria@excavatorboomarm.com](mailto:aria@excavatorboomarm.com)



[excavatorlongarm.com](http://excavatorlongarm.com)

9 Huancui West Road, Cuishanhu New Area, Kaiping City, Guangdong Province, China