



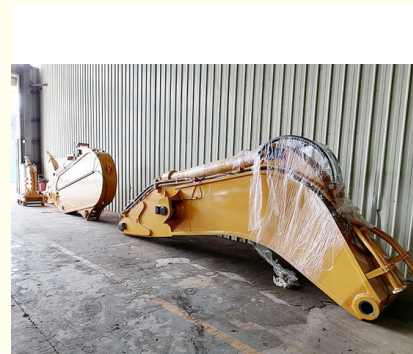
45ton-55ton Excavator Rock Arm For For Cat Hitachi Komatsu Construction Work

Our Product Introduction

for more products please visit us on excavatorlongarm.com

Basic Information

- Place of Origin: China Guangdong
- Brand Name: Zhonghe Machinery
- Certification: CE, patent, ISO
- Model Number: YSB001
- Minimum Order Quantity: 1 set / piece
- Price: USD 99-USD7000
- Packaging Details: bubble
- Delivery Time: 7-35/works
- Payment Terms: T/T, L/C
- Supply Ability: 7 sets per week



Product Specification

- Apply To: 45ton - 55 Ton Excavator
- Cylinders: Enlarge Cylinders
- Condition: New
- Material: Premium Q355B
- Warranty: 6 Months
- Working Condition: Breaking Rocks
- Highlight: 45ton Excavator Rock Arm,
55ton Excavator Rock Arm,
Construction Work Excavator Rock Arm



More Images



Product Description

45ton Excavator Rock Arm for various excavator for cat hitachi komatsu

click here to have our catalog: [2024 Zhonghe Machinery--Product Catalog.pdf](#)

Brief instruction of one set of excavator rock arm / excavator rock boom:

Excavator rock boom --a high strength machine in mining / construction work. Excavator rock arm is common used in breaking / damaging ripping hard rock / hard soil / or others. The comprehensive design of excavator rock arm is stronger enough than standard arm standard boom. It's much heavier than standard ones. The cylinder of it is enlarged which has super strength. The front attachment of excavator rock arm rock boom is a ripper / others. The teeth of the ripper we adopt is stronger one. It can ripper hard sand / soil / rock. The whole design is more suitable for digging.



Front attachments: ripper / or others

Specifications:

Suitable Excavator model(ton)	45-55 ton
big boom	9700 kgs
small arm	7600kgs
stick cylinder	140
bucket cylinder	150
ripper	2030 kgs

One set of excavator rock arm rock boom include: one big boom, one small arm, one stick cylinder, one bucket cylinder, one ripper, pins, D11 bucket teeth, bucket adapters.

Products' details:



Production Advantages



01 >>

Panel is cut by



CNC plasma
machine with
less deformation



《02

Tolerance within
5-10um, ensure
the accuracy of
hole



03》

GMAW-Gas
Metal Arc
Welding



《04

Environmentally
friendly verified
spraying room.
Professional and
beautiful paint
finish





Design Department



Production Department



Sales Department

[Welcome to contact for a big discount.](#)



Jiangmen Kaiping Zhonghe Machinery Manufacturing Co., Ltd



+86 13822325403



aria@excavatorboomarm.com



excavatorlongarm.com

9 Huancui West Road, Cuishanhu New Area, Kaiping City, Guangdong Province, China