



Custom Excavator Attachments Extendable Boom Arm Lightweight Design

Our Product Introduction

for more products please visit us on excavatorlongarm.com

Basic Information

- Place of Origin: China
- Brand Name: Zhonghe Machinery
- Certification: CE, patent, ISO
- Model Number: CLB0024
- Minimum Order Quantity: 1 set / piece
- Price: USD \$10000-\$34285/sets
- Packaging Details: bubble / wooden cases
- Delivery Time: 20-30/works
- Payment Terms: T/T, L/C
- Supply Ability: 800 sets

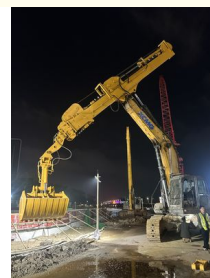


Product Specification

- Material: Q355B, Q690D, Or Others As You Request
- Apply To: 20-50ton Excavator
- Warranty: 6 Months
- Product Name: Excavator Telescopic Boom
- Condition: New
- Color: As Customer Requires
- Application: Excavator
- Weight: 2700-9000KGS
- Certification: ISO9001, ISO CE
- Oem: Available
- After-sales Service Provided: Online Support, Video Technical Support
- Technique: Advanced Techniques
- Oem/odm: Acceptable
- Capacity: 0.6-2.5 Cbm



More Images



Product Description

Custom Telescopic Excavator Attachments Excavator Extendable Arm Supplier Wholesale Telescopic Boom for Excavators

Product Description-----Excavator Telescopic Boom

What is an excavator telescopic arm?

A telescopic arm for excavators is an extendable boom that enhances the machine's versatility. It consists of segments that can extend outward, providing greater operational flexibility for tasks in tight spaces or deep excavations.

What are your advantages?

Advantages of telescopic arms:

1. The telescopic boom consists of three sections made from durable BS900E and Q355B, ensuring a lightweight design.
2. We utilize a robust 6mm thickness for improved longevity. With nylon sliders and steel pulleys, all hoses are centrally lubricated for optimal performance.
3. The external pulley for the bucket cylinder makes hose repairs and replacements more accessible.
4. This design prevents friction by keeping the hose separate from the main cable, reducing maintenance issues.
5. The double-rope feature guarantees that the arm will not extend if the primary cable fails, enhancing overall safety.

Some common size references

Excavator (ton)	Max Depth (mm)	Effective Length (mm)	Bucket Capacity (cbm)
6-10	10000	7600	0.2-0.3
11-15	14000	10500	0.4-0.6
20-30	16000	12500	0.8-1.5
30-35	20000	15500	1.3-1.66
30-35	25000	20500	1-1.4
40-45	25000	20500	1.8-2.5
40-45	30000	25100	1.4-2

Three Section Telescopic Arm Configuration

1. A set of telescopic arm
2. Two high-pressure hoses
3. Two pins
4. One clamshell bucket
5. One two-way foot switch

Some installation instructions for telescopic arms

Our designs allow for interchangeable use of **digging buckets and grab buckets**.

The first one is **clamshell bucket**, usually use for Subway deep digging project.

The second one is the **grab bucket**, compare to the clamshell bucket, the grab bucket have power, can grab the stone.

The last is the **standard bucket**, use for telescopic boom the bucket need do the special design.

Product Detail Display

Telescopic Boom Arm Engineering Case



Cleaning and dredging



Telescopic arm test



Bridge construction projects



Deep pit work



For Deep foundation pit construction project



For unloading materials



For Large-scale earthworks



The telescopic arm of the excavator is suitable for the following working conditions:

Construction in Confined Spaces: The telescopic arm is ideal for construction activities in tight spaces, enhancing maneuverability.

Underground Work: Its extendable design is suitable for underground tasks such as sewer and utility installations.

High-Rise Demolition: The arm's reach is beneficial for dismantling high structures where standard booms may fall short.

Rural and Urban Landscaping: It is versatile for landscaping in both urban and rural settings, accommodating various project sizes.

Foundation Excavation: The adjustable reach is crucial for deep foundation work, ensuring efficient digging.

Complex Terrain: It can adapt to challenging terrains, making it suitable for uneven ground conditions found in mining or quarrying.

Bridge and Overpass Maintenance: The arm allows workers to access difficult areas for maintenance tasks without needing scaffolding.

Heavy Material Handling: Its robust design is perfect for moving heavy materials in tight locations, optimizing workflow.

□

What is the purpose of beveling the long boom arm plate?

Most welding machines commonly used in the industry have a penetration depth of only 3mm. Since the thickness of our long arm plate is at least 8mm, without beveling, the welder would not be able to fully penetrate through the entire joint. This would result in weak welds, leading to issues such as weld cracking in the future.

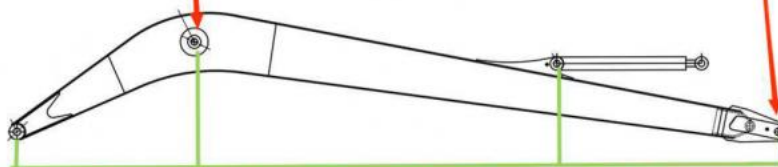
We employ mechanical beveling, whereas other factories rely on manual beveling (as shown in the figure).

High precision machine of Zhonghe Machinery Manufacturers

Double-sided boring lathe



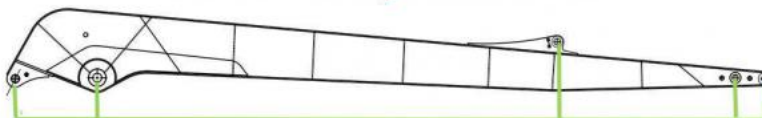
After the excavator boom and arm are assembled, the pins on the boom are drilled to ensure that the pins on the boom are parallel to each other and the cross section of the pin hole is perpendicular to the pin. The double-sided boring machine of the boom makes the hole position more accurate and the quality higher.



Make sure the cross section of the pin hole is perpendicular to the shaft.



Make sure the axis is parallel to the axis



Make sure the cross section of the pin hole is perpendicular to the shaft



Make sure the axis is parallel to the axis

Large Floor-Standing Double-Sided Boring and Milling Lathe:

Improved Accuracy and Consistency: The double-sided boring and milling lathe enhances the precision and uniformity of operations, ensuring consistent results.

Post-Welding Processing: After the welding process, the machine performs overall boring, ensuring the parallelism and perpendicularity of shaft holes.

Primary Applications: Primarily used for post-weld boring of the boom, small arm, and bucket, ensuring the accuracy and

proper alignment of the boom.

Simultaneous Boring on Both Sides: The lathe performs boring on both sides at the same time, guaranteeing identical precision and consistency on both sides.

About Zhonghe Machinery Company Profile:



Kaiping Zhonghe Machinery Manufacturing Co., Ltd.

1. **Foundation Year:** Kaiping Zhonghe Machinery Co., Ltd. was founded in 2018.
2. **Business Operations:** We specialize in manufacturing and trading customized excavator booms and accessories.
3. **Location:** Our facility is in Cuishan Lake New District, Kaiping City, Jiangmen, Guangdong Province, China.
4. **Workshop Details:** We have a 21,000 m³ steel structure workshop dedicated to our production activities.
5. **Equipment Quality:** Our workshop features high-precision processing machinery for optimal performance.
6. **Workforce Composition:** We employ over 100 technicians, including:
50 skilled welders with over 7 years of experience.
30 senior designers.
7. **Innovation Focus:** Our R&D team has over 10 years of experience and has secured more than 100 technical patents.
8. **Quality Assurance:** We implement a rigorous production system, developed over 6 years, focused on quality and cost control.
9. **Production Output:** Our capacity allows us to produce up to 800 sets of various excavator booms each year.
10. **Client Commitment:** We prioritize quality and customer satisfaction, encouraging partnerships with clients domestically and internationally.

CE certification & Utility model patent certificates



Our products have been exported to over 60 countries, utilizing various transportation methods such as sea, land, and air freight. For packaging, we use either wooden crates or stretch film to secure the products. Before shipment, the goods are carefully packaged and then loaded into containers to ensure their safety during transit.

Packaging & Shipping



FAQ(Some frequently asked questions):

Q: Are you a manufacturer?

A: We are a manufacturer/supplier of excavator arms and attachments. We have a super large factory. The factory area is several times that of our competitors. It is the largest excavator attachment factory in Guangdong Province. It has complete production equipment and its products have been exported to more than 60 countries around the world.

Q: Why does the telescopic arm have the difference between a shell bucket and a grab bucket?

A: Generally, shell buckets are easy to use for silt and sand, and can dig a large volume with higher efficiency. However, in general sand and stone work, shell buckets have no digging force and are limited by the opening, so the efficiency of shell buckets will be reduced. Grab buckets are more suitable for this kind of work. However, due to the overall weight of the grab bucket, the volume of the grab bucket is generally smaller than that of the shell bucket, but in work with more stones, the advantages of grab buckets are more obvious.

Q: Is it better to use a single cylinder or a double cylinder for the shell bucket equipped with a telescopic arm?

A: We always use the double cylinder design and never use the single cylinder design. It has the advantages of low failure rate, convenient maintenance, and less oil leakage. What are the disadvantages of the double cylinder? The first is that the shell bucket with a double cylinder is heavier, and the synchronization of grabbing is worse. The overall weight of a single cylinder is lower, and the synchronization is better, the grabbing efficiency is higher, but the failure rate is higher.

Q: What is the material of the telescopic arm?

A: The arm tube is made of BS900E, and other parts are made of Q3558, which is lighter and more durable. We use a thickness of 6mm.

Any information, pls contact Sophia!

this is my contact way directly

Sophia W/A: +86 18127591702

Mail: sophia@excavatorboomarm.com



Jiangmen Kaiping Zhonghe Machinery Manufacturing Co., Ltd



+86 13822325403



aria@excavatorboomarm.com



excavatorlongarm.com

9 Huancui West Road, Cuishanhu New Area, Kaiping City, Guangdong Province, China