



Long Reach Telescopic Boom For Excavator , Construction Sites Metal Telescopic Arm

Our Product Introduction

for more products please visit us on excavatorlongarm.com

Basic Information

- Place of Origin: China
- Brand Name: Zhonghe Machinery
- Certification: CE, patent, ISO
- Model Number: CLB0024
- Minimum Order Quantity: 1 set / piece
- Price: USD \$10000-\$34285/sets
- Packaging Details: bubble / wooden cases
- Delivery Time: 20-30/works
- Payment Terms: T/T, L/C
- Supply Ability: 800 sets



Product Specification

- Material: Q355B, Q690D, Or Others As You Request
- Apply To: 20-50ton Excavator
- Warranty: 6 Months
- Product Name: Excavator Telescopic Boom
- Condition: New
- Color: As Customer Requires
- Application: Excavator
- Weight: 2700-9000KGS
- Certification: ISO9001,ISO CE
- Oem: Available
- After-sales Service Provided: Online Support,Video Technical Support
- Technique: Advanced Techniques
- Oem/odm: Acceptable
- Capacity: 0.6-2.5 Cbm



More Images



Product Description

Excavator Telescopic Boom Long Reach Telescopic Excavator Best Practices for Using Telescopic Excavator Arms

Product Description-----Excavator Telescopic Boom

What is an excavator telescopic arm?

This product mainly consists of a fixed body, sliding body, steel wire rope and a telescopic cylinder. By changing the number of sliding bodies, an ideal working radius and vertical excavation range can be achieved. Generally used in combination with a bucket, it can complete deep pit excavation tasks, such as grabbing soil, sand or coal.

What are your advantages?

Advantages of telescopic arms:

1. The three-section telescopic boom is made of BS900E, and Q355B, which is lighter and more durable.
2. We use 6mm thickness.
3. The slider is made of nylon and the pulley is made of steel. All hoses are centrally lubricated.
4. The external hose pulley of the bucket cylinder is more convenient for hose replacement and repair.
5. The external hose pulley separates the hose from the main rope. Avoid friction between the main rope and the hose, reduce failures.
6. The double rope design ensures the safety of the telescopic arm. Even if the main rope is broken, the arm will not stretch.

Our Product Introduction

Some common size references

Excavator (ton)	Max Depth (mm)	Effective Length (mm)	Bucket Capacity (cbm)
6-10	10000	7600	0.2-0.3
11-15	14000	10500	0.4-0.6
20-30	16000	12500	0.8-1.5
30-35	20000	15500	1.3-1.66
30-35	25000	20500	1-1.4
40-45	25000	20500	1.8-2.5
40-45	30000	25100	1.4-2

Three Section Telescopic Arm Configuration

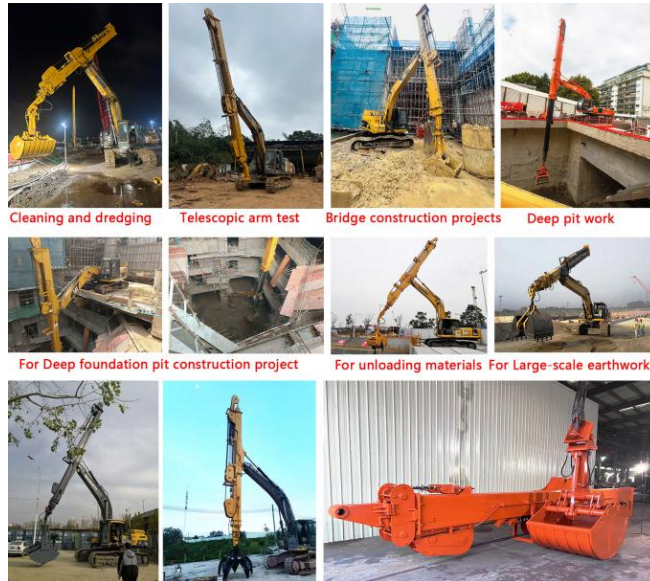
1. A set of telescopic arm
2. Two high-pressure hoses
3. Two pins
4. One clamshell bucket
5. One two-way foot switch

Some installation instructions for telescopic arms

Our designs allow for interchangeable use of **digging buckets and grab buckets**.
 The first one is **clamshell bucket**, usually use for Subway deep digging project.
 The second one is the **grab bucket**, compare to the clamshell bucket, the grab bucket have power, can grab the stone.
 The last is the **standard bucket**, use for telescopic boom the bucket need do the special design.

Product Detail Display

Telescopic Boom Arm Engineering Case



The telescopic arm of the excavator is suitable for the following working conditions:

Narrow space operation: In urban construction or underground projects, the telescopic arm can operate in a limited space efficiently.

Deep foundation pit construction: The telescopic arm can provide a greater working depth and is suitable for construction environments such as foundation pits and basements.

Heavy weapons: Suitable for weapons that require high power and can be equipped with heavier breakers.

Complexity: In the case of no foundation or complexity, the telescopic arm can be flexibly extended and extended to improve the stability of the operation.

Multi-angle excavation: Suitable for scenarios that require multi-angle excavation, such as pipeline installation or tunnel excavation.

Large-scale earthwork: In earthwork construction, it can quickly adapt to different excavation depth and width requirements.

Water conservancy projects: In river dredging or reservoir construction, the telescopic arm can adapt to variable water levels and operating conditions.

What is the purpose of beveling the long boom arm plate?

Most welding machines commonly used in the industry have a penetration depth of only 3mm. Since the thickness of our long arm plate is at least 8mm, without beveling, the welder would not be able to fully penetrate through the entire joint. This would result in weak welds, leading to issues such as weld cracking in the future.

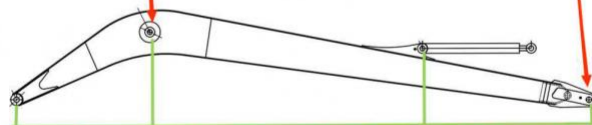
We employ mechanical beveling, whereas other factories rely on manual beveling (as shown in the figure).

High precision machine of Zhonghe Machinery Manufacturers

Double-sided boring lathe



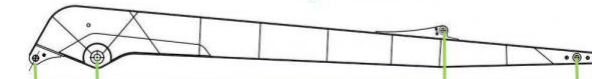
After the excavator boom and arm are assembled, the pins on the boom are drilled to ensure that the pins on the boom are parallel to each other and the cross section of the pin hole is perpendicular to the pin. The double-sided boring machine of the boom makes the hole position more accurate and the quality higher.



Make sure the cross section of the pin hole is perpendicular to the shaft.



Make sure the axis is parallel to the axis



Make sure the cross section of the pin hole is perpendicular to the shaft



Make sure the axis is parallel to the axis

Large Floor-Standing Double-Sided Boring and Milling Lathe:

Improved Accuracy and Consistency: The double-sided boring and milling lathe enhances the precision and uniformity of operations, ensuring consistent results.

Post-Welding Processing: After the welding process, the machine performs overall boring, ensuring the parallelism and perpendicularity of shaft holes.

Primary Applications: Primarily used for post-weld boring of the boom, small arm, and bucket, ensuring the accuracy and proper alignment of the boom.

Simultaneous Boring on Both Sides: The lathe performs boring on both sides at the same time, guaranteeing identical precision and consistency on both sides.

About Zhonghe Machinery Company Profile:



Kaiping Zhonghe Machinery Manufacturing Co., Ltd.

- Company Launch:** Kaiping Zhonghe Machinery Co., Ltd. was established in 2018.
- Business Focus:** We specialize in the manufacturing and trading of customized excavator booms and attachments.
- Facility Location:** Our operations are based in Cuishan Lake New District, Kaiping City, Jiangmen, Guangdong Province, China.
- Workshop Area:** We operate a 21,000 m³ steel structure workshop dedicated to production.
- Equipment Quality:** Our facility is equipped with high-precision processing equipment.
- Workforce Details:** Our skilled team includes over 100 technicians, featuring: 50 welders with extensive experience (7+ years). 30 senior designers.
- R&D Focus:** Our R&D team boasts over 10 years of customization expertise and more than 100 technical patents.
- Production Standards:** We adhere to a strict production system emphasizing quality and cost control, developed over 6 years.
- Annual Output:** We produce up to 800 sets of various types of excavator booms each year.
- Client Relations:** We value quality and customer satisfaction, inviting collaboration with clients worldwide.

CE certification & Utility model patent certificates



Our products have been exported to over 60 countries, utilizing various transportation methods such as sea, land, and air freight. For packaging, we use either wooden crates or stretch film to secure the products. Before shipment, the goods are carefully packaged and then loaded into containers to ensure their safety during transit.

Packaging & Shipping



FAQ(Some frequently asked questions):

Q: Are you a manufacturer?

A: We are a manufacturer/supplier of excavator arms and attachments. We have a super large factory. The factory area is several times that of our competitors. It is the largest excavator attachment factory in Guangdong Province. It has complete production equipment and its products have been exported to more than 60 countries around the world.

Q: Why does the telescopic arm have the difference between a shell bucket and a grab bucket?

A: Generally, shell buckets are easy to use for silt and sand, and can dig a large volume with higher efficiency. However, in general sand and stone work, shell buckets have no digging force and are limited by the opening, so the efficiency of shell buckets will be reduced. Grab buckets are more suitable for this kind of work. However, due to the overall weight of the grab bucket, the volume of the grab bucket is generally smaller than that of the shell bucket, but in work with more stones, the

advantages of grab buckets are more obvious.

Q:Is it better to use a single cylinder or a double cylinder for the shell bucket equipped with a telescopic arm?

A:We always use the double cylinder design and never use the single cylinder design. It has the advantages of low failure rate, convenient maintenance, and less oil leakage. What are the disadvantages of the double cylinder? The first is that the shell bucket with a double cylinder is heavier, and the synchronization of grabbing is worse. The overall weight of a single cylinder is lower, and the synchronization is better, the grabbing efficiency is higher, but the failure rate is higher.

Q:What is the material of the telescopic arm?

A: The arm tube is made of BS900E, and other parts are made of Q3558, which is lighter and more durable. We use a thickness of 6mm.

Any information, pls contact Sophia!
this is my contact way directly
Sophia W/A: +86 18127591702
Mail: sophia@excavatorboomarm.com



Jiangmen Kaiping Zhonghe Machinery Manufacturing Co., Ltd



+86 13822325403



aria@excavatorboomarm.com



excavatorlongarm.com

9 Huancui West Road, Cuishanhu New Area, Kaiping City, Guangdong Province, China