



Customized Color Excavator Pile Driving Boom Arm With Hammer Auger Attachment

Our Product Introduction

for more products please visit us on excavatorlongarm.com

Basic Information

- Place of Origin: China
- Brand Name: Zhonghe Machinery
- Certification: CE, patent, ISO
- Model Number: DZB004
- Minimum Order Quantity: 1 set / piece
- Price: USD 199.00-USD4190.00
- Packaging Details: bubble / wooden cases
- Delivery Time: 5-25/works
- Payment Terms: T/T, L/C or others as you request
- Supply Ability: 5 sets per week

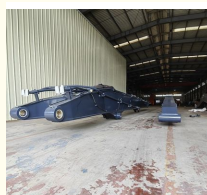


Product Specification

- Condition: New
- Length: 11m-12m
- Warranty: 6 Months
- Color: Customized
- Suitable Excavator: 20 Ton - 24 Ton Excavator
- Key Word: Excavator Pile Arm Pile Boom
- Highlights: Pile Higher And High Effective
- Material: Shaogang Q355B / Other As You Request
- Highlight: Customized Color Excavator Pile Driving Boom, Excavator Boom Arm for Pile Driving



More Images



Product Description

Versatility Excavator Pile Arm Pile Boom with Pile Hammer for Piling Driver Longer life-span

click here to have our PDF catalog: [2024 Zhonghe Machinery--Product Catalog.pdf](#)

One set of excavator pile arm:

Enhanced Piling Capability

A larger piling angle allows the excavator's pile-driving arm to achieve greater heights. With the angle between the boom and arm reaching approximately 160°, this design enables the excavator to position piles higher than conventional models. This results in the ability to install taller piles effectively.

Extended Durability of the Excavator Pile Arm

The innovative design of the pile arm and boom enhances longevity. The structure features built-in transverse and vertical reinforcement ribs, significantly boosting the tensile strength of the pile arm.

Reduced Risk of Cracking

The arm is fortified with multi-layer reinforcing rib plates at critical stress points, ensuring a robust and integrated molding. Furthermore, the pipelines within the excavator's pile arm are crafted with high precision and seamless construction, contributing to its overall integrity.

Emphasis on Safety and Efficiency

Safety and operational efficiency are paramount. The back bushing of the arm is encased in a solid plate to prevent any risk of detachment, ensuring reliable performance during pile driving operations.

Our Product Introduction

Key word: Excavator pile arm, excavator pile boom, excavator pile driver, mini pile driving arm, etc.



Save Engery & High effective

- pile higher
- built-in transverse and vertical reinforcement ribs
- Integrated molding
- Multi-layer reinforcing rib plate at the stress place

welcome to contact Aria:
Whatsapp/wechat/tel: +86 13822325403

Specifications of one set of pile arm pile boom:

| Excavator Model (ton) | Total Length (m) |
|-----------------------|------------------|
| 20-24T | 11-12m |
| 25-28 T | 12.5-13m |
| 30-38 T | 13.5m |
| 36-39 T | 15m |
| 40-47 T | 13-14.2m |
| 40-50T | 15-15.8m |
| 45-52T | 16.5-16.8m |
| 47-52T | 18-19m |
| 65-85T | 24m |

one set of excavator pile driving arm include: one big boom, three valves, high-pressure hoses, and other accessories.

Welcome to send your excavator model to us. Suitable length will be recommend according to your excavator model.



Production Advantages of the excavator pile arm:



Overall Quality

- * Q355B Material
- * Centralized lubrication system



Boom Base

- * Graphite alloy copper sleeve
- * The boom seat sleeve adopts all in one molding process

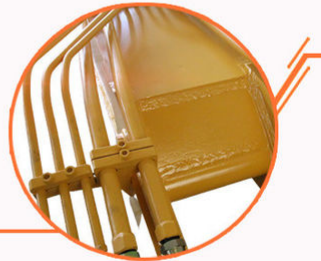


Precision Pipe

- * Seamless precision steel pipe
- * Hydraulic pipelines section design, convenient for later maintenance

Welding process

- * Four layers five passes welding
- * High-quality Ningbo connectors



160°

Open Angle

- * The angle between boom and arm can reach 160°
- * Comparing with the same length pile driving arm, ours can pile higher.

Production details:



01 >>

Panel is cut by
CNC plasma
machine with
less deformation



<< 02

Tolerance within
5-10um, ensure
the accuracy of
hole



03 >>

GMAW-Gas
Metal Arc
Welding

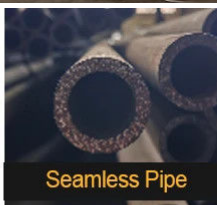


<< 04

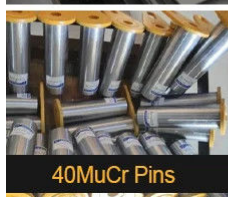
Environmentally
friendly verified
spraying room.
Professional and
beautiful paint
finish



Certified Steel



Seamless Pipe



40MuCr Pins



Graphite Sleeve

Certifications:



Certifications



Welcome to contact Aria directly!
whatsapp:+86 13822325403



[Welcome to contact for a big discount.](#)



Jiangmen Kaiping Zhonghe Machinery Manufacturing Co., Ltd



+86 13822325403



aria@excavatorboomarm.com



excavatorlongarm.com

9 Huancui West Road, Cuishanhu New Area, Kaiping City, Guangdong Province, China