



Versatile Tunnel Excavator Attachment Adjustable Short Boom Arm For Various Soils

Our Product Introduction

for more products please visit us on excavatorlongarm.com

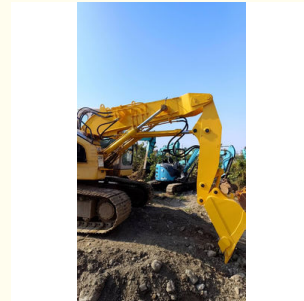
Basic Information

- Place of Origin: China
- Brand Name: Zhonghe Machinery
- Certification: CE, patent, ISO
- Model Number: CLB0024
- Minimum Order Quantity: 1 set / piece
- Price: USD \$3457/sets
- Packaging Details: bubble / wooden cases
- Delivery Time: 20-30/works
- Payment Terms: T/T, L/C
- Supply Ability: 800 sets

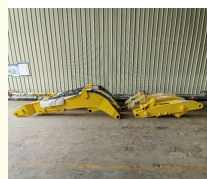


Product Specification

- Material: Q355B, Q690D, Or Others As You Request
- Apply To: 6-50ton Excavator
- Warranty: 6 Months
- Working Condition: Tunnel Work
- Condition: New
- Color: As Customer Requires
- Application: Excavator
- Type: High Reach Demolition Boom
- Certification: ISO9001, ISO CE
- Oem: Available
- After-sales Service Provided: Online Support, Video Technical Support
- Technique: Advanced Techniques
- Oem/odm: Acceptable
- Highlight: Excavator Attachment Short Boom Arm, Adjustable Excavator Short Boom



More Images



Product Description

Versatile Tunnel Excavator Attachment for Various Soils Adjustable Short Boom Arm for Enhanced Maneuverability

I. Advantages of Excavator Tunnel Arm/Short Arm

Benefits of Using Excavator Tunnel Arm/Short Arm:

Compact Design: Ideal for use in areas with limited maneuvering space.

Improved Productivity: Enhances the speed and efficiency of excavation tasks.

High Versatility: Suitable for a range of applications including mining and construction.

Lower Environmental Impact: Designed to minimize soil disruption during operation.

Strong Build Quality: Constructed to endure harsh working conditions and heavy loads.

Easy Operation: User-friendly controls for operators of all skill levels.

Multi-Functional: Can be used with various attachments for diverse tasks.

Time-Saving: Streamlines the excavation process, reducing project timelines.

Lightweight Structure: Facilitates easier transportation and setup.

Safety Enhancements: Incorporates features that improve operator safety in confined spaces.

Advantages of Zhonghe Machinery

1. Professional product design team, rich experience, strong design pertinence.
2. Automated processing equipment. Automatic cutting, double-sided floor-standing large boring machine, etc.
3. Industry standard welding process, carbon dioxide shielded welding, good weld crack resistance.

4. Strict and meticulous quality inspection, ultrasonic flaw detection

excavator(ton)	total length (mm)	boom (mm)	arm (mm)	max height (mm)	max depth (mm)
20-25T	1300	3200	1900	4500	8500
30-36T	4200	4200	1900	5000	10500
40-45T	4500	4500	1900	5000	11000

Working scene of tunnel arm

□

□

Special design----meet customer needs !!!

Why Modify the Tunnel Arm?

1. Adjusting the tunnel arm's operating range ensures it can navigate various working conditions without the risk of hitting tunnel beams or basement structures.
2. Post-modification, larger breakers can be employed. For instance, a modified PC120 can support a 135 breaker, while a PC200 can handle a 165 breaker, which necessitates an increased confluence in double pumps, thereby doubling the impact power.
3. The ability of the tunnel boom to support a bucket increases with shorter boom length, allowing for greater force and the use of larger buckets due to reduced torque.
4. Utilizing a stop valve during bucket use prevents hydraulic fluid from leaking when switching from a breaker.
5. To minimize the chance of oil leaks, the pipe joints are constructed with multi-layer welding.
6. The design of the cylinder guard offers protection against potential collisions, safeguarding the cylinder.
7. We provide competitive factory pricing with customization options, including ODM and OEM services.

□

|| Excavator Tunnel Arms Suitable For Application

□

□

What is the purpose of beveling the long arm/tunnel arm plate?

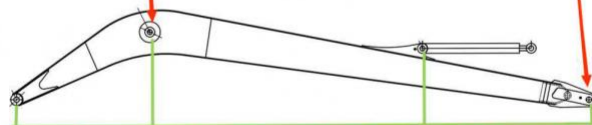
Most welding machines commonly used in the industry have a penetration depth of only 3mm. Since the thickness of our long arm plate is at least 8mm, without beveling, the welder would not be able to fully penetrate through the entire joint. This would result in weak welds, leading to issues such as weld cracking in the future. We employ mechanical beveling, whereas other factories rely on manual beveling (as shown in the figure).

High precision machine of Zhonghe Machinery Manufacturers

Double-sided boring lathe



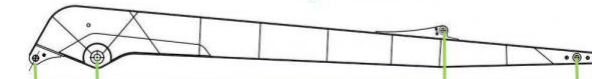
After the excavator boom and arm are assembled, the pins on the boom are drilled to ensure that the pins on the boom are parallel to each other and the cross section of the pin hole is perpendicular to the pin. The double-sided boring machine of the boom makes the hole position more accurate and the quality higher.



Make sure the cross section of the pin hole is perpendicular to the shaft.



Make sure the axis is parallel to the axis



Make sure the cross section of the pin hole is perpendicular to the shaft



Make sure the axis is parallel to the axis

Large Floor-Standing Double-Sided Boring and Milling Lathe:

Improved Accuracy and Consistency: The double-sided boring and milling lathe enhances the precision and uniformity of operations, ensuring consistent results.

Post-Welding Processing: After the welding process, the machine performs overall boring, ensuring the parallelism and perpendicularity of shaft holes.

Primary Applications: Primarily used for post-weld boring of the boom, small arm, and bucket, ensuring the accuracy and proper alignment of the boom.

Simultaneous Boring on Both Sides: The lathe performs boring on both sides at the same time, guaranteeing identical precision and consistency on both sides.

About Zhonghe Machinery Company Profile:

Kaiping Zhonghe Machinery Manufacturing Co., Ltd.

Foundation: Kaiping Zhonghe Machinery Co., Ltd. was established in 2018.

Business Focus: We are a manufacturer and trader specializing in custom excavator booms and attachments.

Location: Our facility is located in Cuishan Lake New District, Kaiping City, Jiangmen, Guangdong Province, China.

Workshop Size: We operate a spacious workshop covering 21,000 m², built with a steel structure.

Equipment: Our workshop is equipped with high-precision processing machinery.

Team Composition: We have a dedicated team of over 100 technicians, including: 50 welding professionals with over 7 years of experience.

30 senior designers.

R&D Capability: Our high-tech R&D team has more than 10 years of experience and holds over 100 technical patents.

Production System: We follow a strict production system focused on quality control and cost management, developed over 6 years.

Annual Output: We are capable of producing up to 800 sets of various excavator booms each year.

Customer Commitment: We prioritize customer satisfaction and welcome collaboration with clients worldwide.

CE certification & Utility model patent certificates



Our products have been exported to over 60 countries, utilizing various transportation methods such as sea, land, and air freight. For packaging, we use either wooden crates or stretch film to secure the products. Before shipment, the goods are carefully packaged and then loaded into containers to ensure their safety during transit.

Packaging & Shipping



FAQ(Some frequently asked questions):

Q1: Are you a manufacturer?

A1: Zhonghe Machinery provides a wide variety of attachments for excavators. Such as long arms, demolition arms, telescopic arms, standard buckets, rock buckets, cleaning buckets, tilt buckets, etc. We know that the perfect combination of high-quality cast steel products and moderate prices is the key to success.

Q2: Why is it called a tunnel arm?

A2: Tunnel arms generally refer to working devices that operate in narrow spaces. Most of them operate in tunnels, so they are called tunnel arms. Each country has a different name, but in China we call it a tunnel arm.

Q3: What are the configurations of the tunnel arm?

A3: Depending on the height of the tunnel, the configuration that requires or does not require the boom cylinder can be designed, but the necessary configurations are: one boom cylinder, one bucket cylinder, 8 pins, 6 high-pressure hoses, one set of connecting rod assemblies, one set of crushing pipes, and 2 stop valves. The general operating height of the tunnel arm is 4-6 meters.

Q4: What are the requirements for the tunnel arm?

A4: A. It is recommended that the tunnel arm be equipped with a straight hammer. The basement height is limited. During operation, the triangular hammer part is higher than the arm plane, which will scrape the top and make the operation inconvenient. The straight hammer will not have this problem. B. The tunnel arm design does not take into account the transportation height. Generally, the transportation of large-scale mechanical tunnel arms requires the breaker to be removed before transportation. Filling materials in the forearm of the tunneling arm increases the weight of the tunneling arm, presses down the breaker, reduces the rebound force of the breaker, and increases the crushing force.

Any information, pls contact Sophia!

this is my contact way directly

Sophia W/A: +86 18127591702

Mail: sophia@excavatorboomarm.com



Jiangmen Kaiping Zhonghe Machinery Manufacturing Co., Ltd

+86 13822325403

aria@excavatorboomarm.com

excavatorlongarm.com

9 Huancai West Road, Cuishanhu New Area, Kaiping City, Guangdong Province, China