



## Custom Long Reach Hydraulic Boom Arm For High Reach Demolition Excavator

Our Product Introduction

for more products please visit us on excavatorlongarm.com

### Basic Information

- Place of Origin: China
- Brand Name: Zhonghe Machinery
- Certification: CE, patent, ISO
- Model Number: CLB0024
- Minimum Order Quantity: 1 set / piece
- Price: USD6000/sets
- Packaging Details: bubble / wooden cases
- Delivery Time: 20-30/works
- Payment Terms: T/T, L/C
- Supply Ability: 800 sets

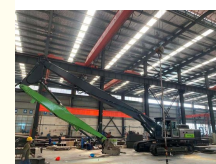


### Product Specification

- Material: Q355B, Q690D, Or Others As You Request
- Length: 17m, 20m, 25m, 30m
- Apply To: 25 Ton - 67 Ton Excavator
- Warranty: 6 Months
- Working Condition: Demolite Buildings
- Condition: New
- Color: As Customer Requires
- Application: Mining / Construction,mining,building Demolition And Sepcial Engineering,rock,for Excavators
- Type: High Reach Demolition Boom
- Certification: ISO9001,ISO CE
- Oem: Available
- After-sales Service Provided: Online Support,Video Technical Support
- Technique: Advanced Techniques



### More Images



### Product Description

**Versatile Demolition Arm for Excavators Long Reach Hydraulic Boom for Excavators Excavator Boom for Controlled Demolion**

Our Product Introduction

Excavator Demolition Boom Arm  
More details, contact Ada:  
Whatsapp: +86 15322105263  
Wechat/Tel: 0086 15322105263



## Product Description-----Excavator Demolition Boom

### High reach demolition boom/front

#### High-Reach Demolition Arm/Front

##### Function:

This tool is chiefly used for the dismantling of high-rise constructions, providing a safer and more efficient alternative to conventional demolition methods.

##### Characteristics:

Featuring a three-part design, this boom is optimized for high-rise demolition, ensuring enhanced safety and flexibility compared to older techniques.

Modular joints enable quick assembly and disassembly, making it transport-friendly and allowing for conversion into a long-reach boom.

Option for camera installation is available.

Materials such as Q355B and Q690D can be employed.

An **excavator demolition arm** is a specialized attachment developed to extend the operational scope of excavators, particularly when demolishing taller structures like high-rise buildings. These arms facilitate the safe demolition of structures such as bridges, buildings, and other large constructions. Its main features are:

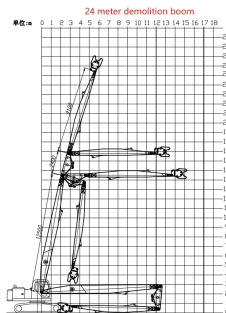
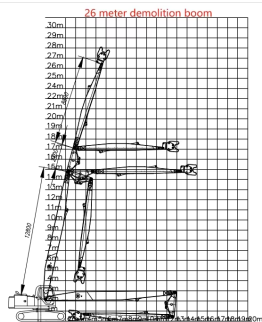
**Extended Height Reach:** The arm enables the excavator to access higher elevations, often up to 30 meters or more, perfect for demolishing tall structures.

**Reinforced Build:** Designed to handle the additional stress and force involved in demolition, especially when combined with hydraulic tools such as shears or crushers.

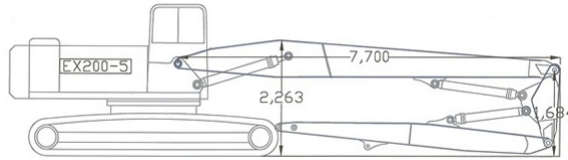
**Custom Options:** Demolition arms can be customized based on specific project needs, including length adjustments and attachment compatibility.

**Safety-Oriented Design:** Ensures operator safety with features like tilting cabs and enhanced visibility for precise and safe demolition operations.

## Some common size references



Excavator (ton)	Total Length (mm)	Transport Height(mm)	Max Lift Height (mm)	Limit weight of hydraulic shear(kg)	Cylinder (Ton)	Counterweight (ton)
25 Ton	16000	3160	14900	2000	20 Ton	4T
30 Ton	18000	3300	17000	2000	20 Ton	4.5T
35 Ton	20000	3300	19000	2000	20 Ton	4.5T
40 Ton	22000	3400	21050	2000	20 Ton	5T
40 Ton	24000	3400	23100	2000	20 Ton	5T



#### Excavator demolition arm supports customization, the following is general data reference.

We offer a three-segment demolition arm capable of extending from 16 to 35 meters, making it ideal for excavators with a capacity of 25 to 70 tons.

**Material Quality:** Crafted from Q355B and Q690D, reinforced with sturdy plates to ensure longevity.

**Color Flexibility:** Custom painting options are available based on customer demands.

**Versatile Applications:** Well-suited for high-rise building demolition, urban site deconstruction, heavy load handling, restoration of old buildings, and interior demolition activities.



#### A complete set of demolition arm includes the following configurations:

- 8 pins
- 24 high-pressure hoses
- 1 set of connecting rod assembly
- 10 stop valves
- 1 bucket cylinder
- 5 butter hoses
- Several gaskets, installation tools, etc.

Customers need to prepare 1 or 2 spare valve blocks and 2 foot valves, of course, our factory can also provide them.

We can supply any additional cylinders or counterweights you may need, along with clear installation instructions for both the demolition arms and counterweights. Customizable long arms are also available to meet your specific requirements.

Designed primarily for demolishing high-rise buildings, our arms are made from high-strength steel plates, compatible with crushers, and equipped with water spray pipes to help control dust.

You have the option to choose from materials like Q345B, Q690D, and Weldox based on your application needs.

If you visit China, we would be thrilled to welcome you to our factory and provide assistance!

#### Zhonghe Machinery Factory Advantages of Three-section Demolition Boom



#### What are the key benefits of our three-stage demolition arm?

It can be entirely lowered, and accessories can rotate without needing disassembly. In transport, it rotates without colliding with the track plate, a feature lacking in many competitors' designs.

The demolition arm's opening angle reaches almost 180 degrees, facilitating higher demolition heights. The bucket cylinder pin is designed at 90 degrees for increased reliability during demanding operations.

We use premium materials for pipes and joints, with strict adherence to processing standards, including pre-welding grooves and trial assemblies for precise fit. The closer spacing of internal ribs enhances rigidity and toughness, adding weight that improves overall product quality.

## Details Advantage



## Product Advantages

### Process:

Every part of the demolition arm, from the pin sleeve to the steel plate, is carefully selected from reliable suppliers, and professional processing equipment plays an important role in each stage. CNC flame cutting machine is used to cut the steel into a good shape, beveling machine is used to bevel the plate edge for better welding, and bending machine is used to bend some steel plates. All our technical workers have rich work experience.

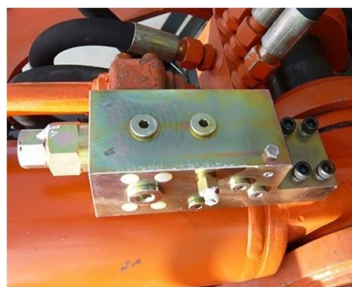
### Applications:

1. Demolition of high-rise buildings and structures.
2. Typically connected to hydraulic breakers, multiprocessors or hydraulic shears.

### Features:

- \* Heavy-duty construction.
- \* Designs are extensively simulated to ensure design integrity and detect potential stress and fatigue points
- \* Attachment auxiliary hydraulic lines.
- \* Hydraulic cylinders and safety check valves are supplied as a set
- \* Modular joints on the main boom for easy transportation.
- \* All surfaces are shot blasted.
- \* Marine epoxy paint is used as a primer.

As people pay more and more attention to the safety of the working environment and industry regulations become more and more stringent, aerial work arms are quickly becoming the preferred attachment for demolishing old buildings, replacing the traditional, accident-prone excavator to perform high-risk tasks on the upper floors. The aerial work arm has changed the entire concept of demolishing buildings, not only improving the overall safety standards, but also expanding the working radius and range of the end attachments, while standard machines are insufficient in this regard, and the aerial demolition arm is becoming more and more important.



### Safety Check Valves:

We can offer safety check valves if requested by our customers. These valves can be integrated into hydraulic cylinders as an additional layer of safety.

In the case of a hydraulic system failure, the safety valve will effectively lock the load in place. It's vital that the safety valve remains intact at all times. Our technology is reliable and well-established, ensuring that the installation process does not impact the normal functioning of the excavator.

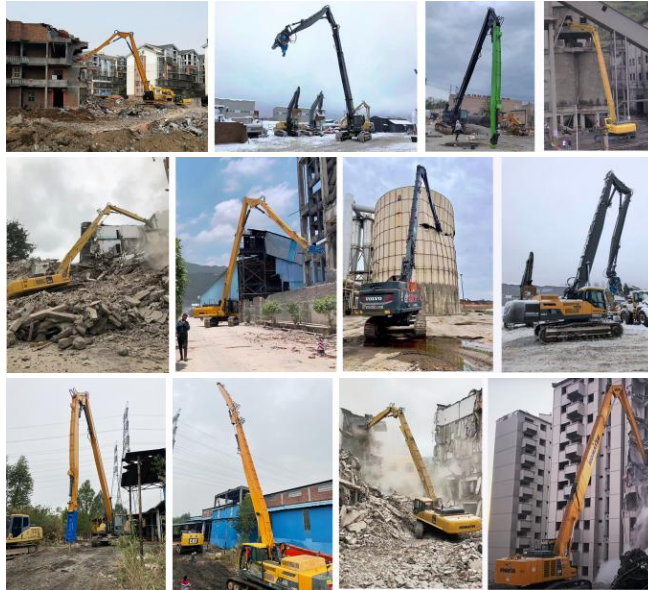




### High Reach Demolition Arm

- \* Seamless precision steel pipe
- \* Q690D for boom's upper and lower cover
- \* Adopt 90mm pin to avoid pin breakage
- \* The pipeline is hidden to avoid being smashed
- \* Hydraulic pipelines section design, convenient for later maintenance

## Excavator Demolition Boom Arm Engineering Case



Excavator demolition arms operate effectively under various conditions, such as high-altitude demolitions, confined urban spaces, and during the dismantling of heavy industrial facilities. Their versatility allows them to tackle both broad and intricate demolition tasks efficiently.

## Some Demolition Attachments With Demolition Boom

## Some Demolition Attachment with Demolition Boom



All demolition attachments and demolition  
boom arms are made in Zhonghe Machinery !!!

**Related building demolition attachments for excavator demolition arms**

Hydraulic pulverizer  
Multi crusher/Multi shear  
Double cylinder shear  
Rock hammer/breaker hammer

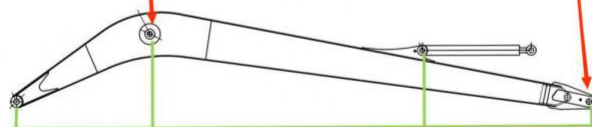
---

**High precision machine of Zhonghe Machinery Manufacturers**

## Double-sided boring lathe



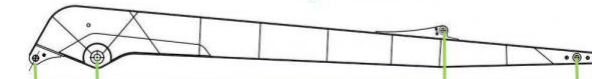
After the excavator boom and arm are assembled, the pins on the boom are drilled to ensure that the pins on the boom are parallel to each other and the cross section of the pin hole is perpendicular to the pin. The double-sided boring machine of the boom makes the hole position more accurate and the quality higher.



Make sure the cross section of the pin hole is perpendicular to the shaft.



Make sure the axis is parallel to the axis



Make sure the cross section of the pin hole is perpendicular to the shaft



Make sure the axis is parallel to the axis

### Large Floor-Standing Double-Sided Boring and Milling Lathe:

**Improved Accuracy and Consistency:** The double-sided boring and milling lathe enhances the precision and uniformity of operations, ensuring consistent results.

**Post-Welding Processing:** After the welding process, the machine performs overall boring, ensuring the parallelism and perpendicularity of shaft holes.

**Primary Applications:** Primarily used for post-weld boring of the boom, small arm, and bucket, ensuring the accuracy and proper alignment of the boom.

**Simultaneous Boring on Both Sides:** The lathe performs boring on both sides at the same time, guaranteeing identical precision and consistency on both sides.

### About Zhonghe Machinery Company Profile:



## Kaiping Zhonghe Machinery Manufacturing Co., Ltd.

Kaiping Zhonghe Machinery Manufacturing Co., Ltd. was established in 2018. It is an enterprise integrating production and trade. It specializes in customizing different types of excavator booms arms and attachments, such as excavator long arms, demolition arms, sliding arms, 2-3 section telescopic arms, tunnel arms, standard/rock buckets, grabs, ripper, etc., which are sold well in more than 60 countries and regions.

The following are our advantages:

1. Covers an area of about 18000 square meters
2. Staff size 120 people.
3. Technical equipment (2 sets of plasma, CNC cutting machines, 3 milling machines, a set of precision floor boring machines, One set of chamfering and beveling machines, two large lathes/drilling machines, a large shot blasting workshop, a stress relief workshop, a large plate rolling machine, and a high -purity mixed gas supply station, etc.)
4. Our company offers customers a comprehensive production line of custom-designed, custom-made, and delivered products.
5. Prompt lead time: 7-25 days
6. Annual production amount 600 sets of excavator booms We adhere to "Merit Quality, Sincerity Management and Customer Satisfaction", honestly greet customers from home and abroad to negotiate and cooperate with us.

### CE certification & Utility model patent certificates



Our products have been exported to over 60 countries, utilizing various transportation methods such as sea, land, and air freight. For packaging, we use either wooden crates or stretch film to secure the products. Before shipment, the goods are carefully packaged and then loaded into containers to ensure their safety during transit.

### Packaging & Shipping



### FAQ(Some frequently asked questions):

#### Q: Are you a manufacturer?

A: Zhonghe machinery offered a wide range of attachment parts for excavators and dozers. Such as long reach arm, demolition arm, telescopic arm, standard bucket, rock bucket, cleaning bucket, tilting bucket, etc. We know that the perfect combination of high-quality cast steel products and a moderate price is the key to the success.

#### Q: What material is the excavator demolition boom made of?

A: Shaogang Q355B, Shaogang's material has the advantages of good toughness, high welding performance, and not easy to crack. Q355B has good welding performance and can be processed at room temperature. The standard arm material of the host manufacturer is also Q355B, which is easier to purchase on the market and the subsequent maintenance cost is also simple. If the customer's working conditions are bad, we will also use Q690 material, the long arm will be made lighter and more efficient

#### Q: Why choose Zhonghe over other companies?

A: We offer a highly skilled production and design team that delivers high-quality, customized solutions tailored to each customer's needs. Our commitment to precision and customer service has earned us a strong reputation in China, with annual sales consistently ranking among the top in the industry.

#### Q: What are your terms of payment?

A: We prefer T/T (50/50) payment terms, and for trial orders, we recommend using **Ali Credit Insurance** for added security.

Any information, pls contact Ada!!!!

Whatsapp: +86 15322105263

Wechat/Tel: 0086 15322105263

E-mail: abby@excvtorboomarm.com





**Jiangmen Kaiping Zhonghe Machinery Manufacturing Co., Ltd**



+86 13822325403



aria@excavatorboomarm.com



excavatorlongarm.com

9 Huancui West Road, Cuishanhu New Area, Kaiping City, Guangdong Province, China