



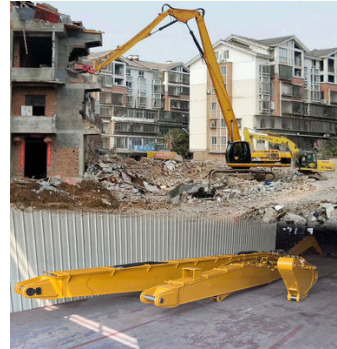
High Reach Demolition Equipment Boom Arm Multi Functional Excavator Boom

Our Product Introduction

for more products please visit us on excavatorlongarm.com

Basic Information

- Place of Origin: China
- Brand Name: Zhonghe Machinery
- Certification: CE, patent, ISO
- Model Number: CLB0024
- Minimum Order Quantity: 1 set / piece
- Price: USD6500/sets
- Packaging Details: bubble / wooden cases
- Delivery Time: 20-30/works
- Payment Terms: T/T, L/C
- Supply Ability: 800 sets



Product Specification

- Material: Q355B, Q690D, Or Others As You Request
- Length: 17m, 20m, 25m, 30m
- Apply To: 25 Ton - 67 Ton Excavator
- Warranty: 6 Months
- Working Condition: Demolish Buildings
- Condition: New
- Color: As Customer Requires
- Application: Mining / Construction, mining, building Demolition And Special Engineering, rock, for Excavators
- Type: High Reach Demolition Boom
- Certification: ISO9001, ISO CE
- Oem: Available
- After-sales Service Provided: Online Support, Video Technical Support
- Technique: Advanced Techniques



More Images



Product Description

Demolition Equipment for Excavators Excavator Boom for Building Demolition Multi-Functional Excavator Boom

Our Product

Excavator Demolition Boom Arm
More details, contact Ada:
Whatsapp: +86 15322105263
Wechat/Tel: 0086 15322105263



Product Description-----Excavator Demolition Boom

High reach demolition boom/front

Application:

Primarily employed in the demolition of high-rise buildings, this method stands out for its efficiency and safety compared to traditional approaches.

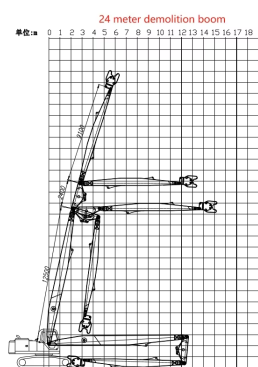
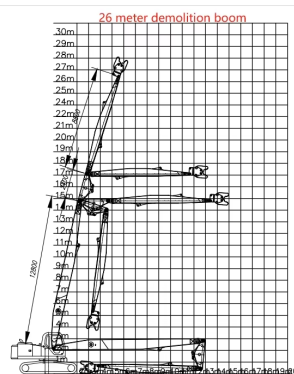
Highlights:

The boom consists of three segments specifically designed for the safe and flexible dismantling of tall structures. Modular joints facilitate rapid assembly and disassembly, catering to transport needs while allowing conversion into a long-distance boom.

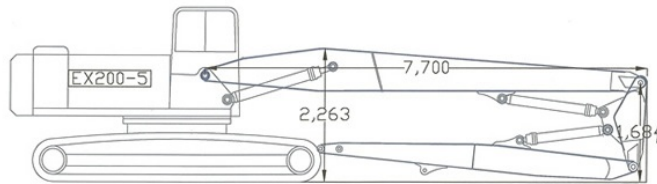
An optional camera can be installed.

Available materials include Q355B and Q690D.

Some common size references



Excavator (ton)	Total Length (mm)	Transport Height(mm)	Max Lift Height (mm)	Limit weight of hydraulic shear(kg)	Cylinder (Ton)	Counterweight (ton)
25 Ton	16000	3160	14900	2000	20 Ton	4T
30 Ton	18000	3300	17000	2000	20 Ton	4.5T
35 Ton	20000	3300	19000	2000	20 Ton	4.5T
40 Ton	22000	3400	21050	2000	20 Ton	5T
40 Ton	24000	3400	23100	2000	20 Ton	5T



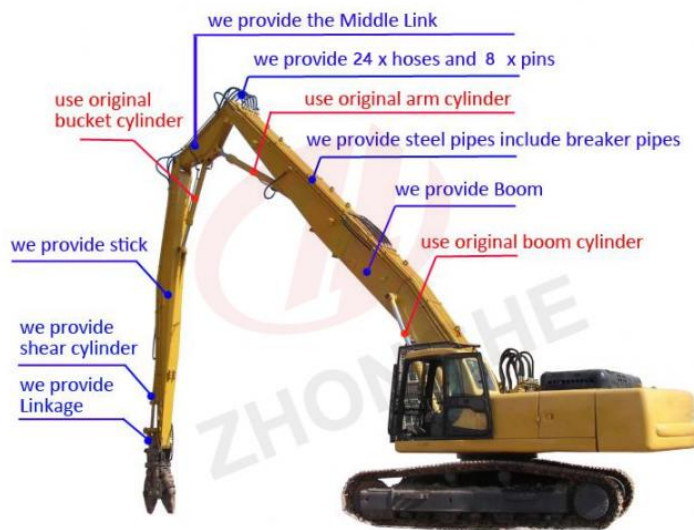
Excavator demolition arm supports customization, the following is general data reference.

Our innovative three-section demolition arm is designed to achieve lengths between 16 and 35 meters, suitable for excavators that weigh from 25 to 70 tons.

Material Composition: Utilizes Q355B, Q690D, along with a strong reinforcement plate for enhanced strength.

Color Customization: Clients can request specific colors or paint finishes as needed.

Applications: This arm excels in high-rise demolitions, urban demolition projects, heavy material handling, renovations of aging structures, and interior demolition tasks.



A complete set of demolition arm includes the following configurations:

- 8 pins
- 24 high-pressure hoses
- 1 set of connecting rod assembly
- 10 stop valves
- 1 bucket cylinder
- 5 butter hoses
- Several gaskets, installation tools, etc.

Customers need to prepare 1 or 2 spare valve blocks and 2 foot valves, of course, our factory can also provide them.

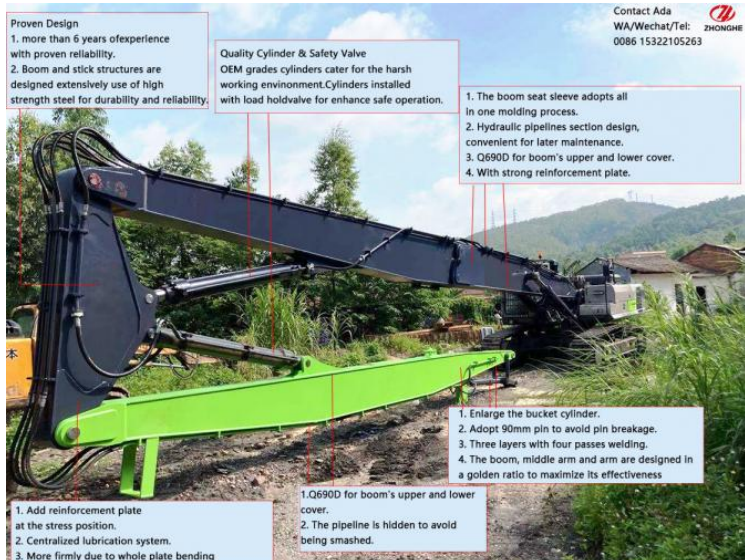
If you require additional cylinders or counterweights, we can provide them along with installation instructions for the demolition arms and counterweights. We also offer customization for various long arms based on your specific needs.

Primarily designed for high-rise building demolition, our products are made from high-strength steel plates and are fully compatible with crushers. They include water spray pipes to minimize dust.

You can choose from a range of materials, including Q345B, Q690D, and Weldox, based on your application requirements.

If you have the opportunity to visit China, we warmly invite you to our factory. We would be delighted to assist you.

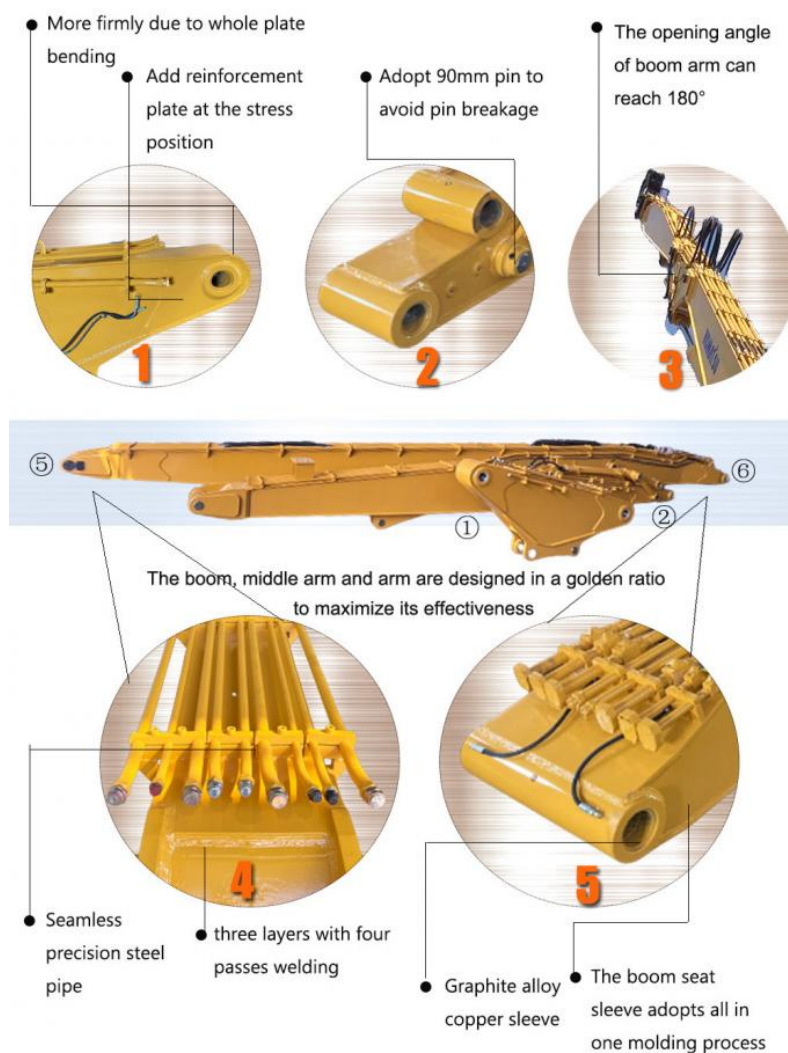
Zhonghe Machinery Factory Advantages of Three-section Demolition Boom



Why choose our three-stage demolition arm?

It can be fully lowered, and its accessories rotate freely without disassembly. In contrast to other manufacturers, our design allows for rotation during transport, avoiding collisions with the track plate. With a near 180-degree opening angle, the arm achieves higher demolition heights. We've reinforced the bucket cylinder pin with a 90-degree design to prevent issues during intense use. Our pipes, materials, and joints are the best available on the market. We enforce rigorous processing standards, including groove openings for welding and trial assemblies before shipment, ensuring precision. Shortening the distance between internal ribs boosts rigidity and toughness while adding weight for superior quality.

Details Advantage



Product Advantages

Process:

Every part of the demolition arm, from the pin sleeve to the steel plate, is carefully selected from reliable suppliers, and professional processing equipment plays an important role in each stage. CNC flame cutting machine is used to cut the steel into a good shape, beveling machine is used to bevel the plate edge for better welding, and bending machine is used to bend some steel plates. All our technical workers have rich work experience.

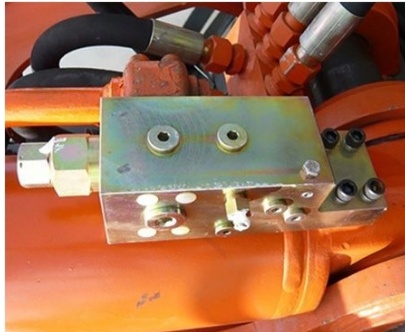
Applications:

1. Demolition of high-rise buildings and structures.
2. Typically connected to hydraulic breakers, multiprocessors or hydraulic shears.

Features:

- * Heavy-duty construction.
- * Designs are extensively simulated to ensure design integrity and detect potential stress and fatigue points
- * Attachment auxiliary hydraulic lines.
- * Hydraulic cylinders and safety check valves are supplied as a set
- * Modular joints on the main boom for easy transportation.
- * All surfaces are shot blasted.
- * Marine epoxy paint is used as a primer.

As people pay more and more attention to the safety of the working environment and industry regulations become more and more stringent, aerial work arms are quickly becoming the preferred attachment for demolishing old buildings, replacing the traditional, accident-prone excavator to perform high-risk tasks on the upper floors. The aerial work arm has changed the entire concept of demolishing buildings, not only improving the overall safety standards, but also expanding the working radius and range of the end attachments, while standard machines are insufficient in this regard, and the aerial demolition arm is becoming more and more important.



Safety Check Valves:

If customers require us to provide safety check valves, we can provide them. We offer customers the option of installing safety check valves on hydraulic cylinders as an additional safety feature.

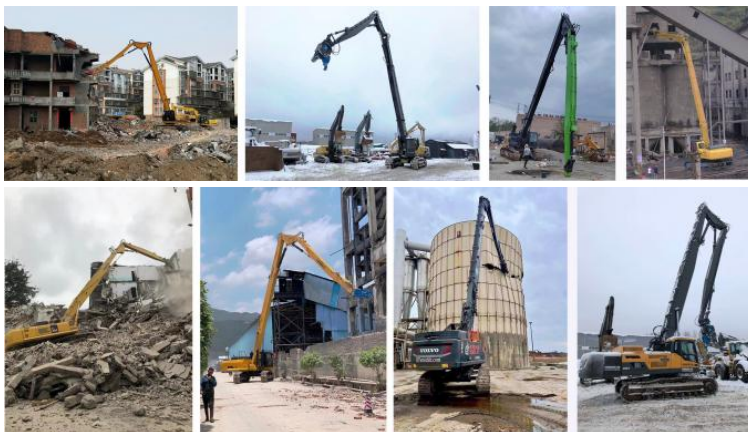
In the event of a failure in the hydraulic system, the safety valve will lock and hold the load in place. Under no circumstances should the safety valve be compromised. Reliable and proven technology is readily available. The aim is that the installation will not have any impact on the normal operating functions of the excavator.



High Reach Demolition Arm

- * Seamless precision steel pipe
- * Q690D for boom's upper and lower cover
- * Adopt 90mm pin to avoid pin breakage
- * The pipeline is hidden to avoid being smashed
- * Hydraulic pipelines section design, convenient for later maintenance

Excavator Demolition Boom Arm Engineering Case





Excavator demolition arms are suited for a wide range of working conditions, including the demolition of tall structures, urban environments, and industrial sites. They excel in tough terrains and can efficiently handle heavy debris, making them ideal for both large-scale projects and precise demolitions.

Some Demolition Attachments With Demolition Boom

Some Demolition Attachment with Demolition Boom



All demolition attachments and demolition
boom arms are made in Zhonghe Machinery !!!

Related building demolition attachments for excavator demolition arms

Hydraulic pulverizer: It is suitable for demolition operations such as separating reinforced concrete.

1. Made of Hardox 500, light weight and wear-resistant.
2. The oil cylinder adopts honed tube and imported HALLITE oil seal, with short working cycle and long life.
3. The pin is made of 42CRMO alloy steel with built-in oil channel, high strength and good toughness.
4. The blade is made of wear-resistant alloy steel, resistant to high temperature and deformation.

Multi crusher/Multi shear: It is suitable for the demolition of high-rise buildings in the old city renovation and the demolition of abandoned factories, solving the problem of high-altitude operations; at the same time, it prevents the occurrence of safety accidents.

1. The scissor body is made of Hardox steel plate, which ensures maximum strength and best wear resistance;
2. The oil cylinder is installed in reverse, mainly to protect the oil cylinder rod, avoid damage, and extend the service life of the oil cylinder.

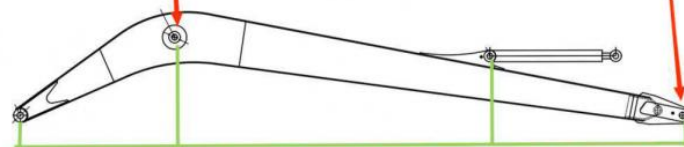
Double cylinder shear: The double cylinder shear adopts a specially made reinforced slewing bearing. The teeth of the slewing bearing are processed with high frequency, so it has better wear resistance and longer service life. This reinforced slewing bearing has a greater load-bearing capacity and can withstand loads in various directions at the same time. It is the one with the largest load-bearing capacity among slewing bearing products of the same level and can be used in harsh working conditions such as high-altitude demolition.

High precision machine of Zhonghe Machinery Manufacturers

Double-sided boring lathe



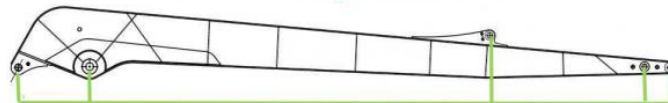
After the excavator boom and arm are assembled, the pins on the boom are drilled to ensure that the pins on the boom are parallel to each other and the cross section of the pin hole is perpendicular to the pin. The double-sided boring machine of the boom makes the hole position more accurate and the quality higher.



Make sure the cross section of the pin hole is perpendicular to the shaft.



Make sure the axis is parallel to the axis



Make sure the cross section of the pin hole is perpendicular to the shaft



Make sure the axis is parallel to the axis

Large Floor-Standing Double-Sided Boring and Milling Lathe:

Improved Accuracy and Consistency: The double-sided boring and milling lathe enhances the precision and uniformity of operations, ensuring consistent results.

Post-Welding Processing: After the welding process, the machine performs overall boring, ensuring the parallelism and perpendicularity of shaft holes.

Primary Applications: Primarily used for post-weld boring of the boom, small arm, and bucket, ensuring the accuracy and proper alignment of the boom.

Simultaneous Boring on Both Sides: The lathe performs boring on both sides at the same time, guaranteeing identical precision and consistency on both sides.

About Zhonghe Machinery Company Profile:



Kaiping Zhonghe Machinery Manufacturing Co., Ltd.

Kaiping Zhonghe Machinery Manufacturing Co., Ltd. was established in 2018. It is an enterprise integrating production and trade. It specializes in customizing different types of excavator booms arms and attachments, such as excavator long arms, demolition arms, sliding arms, 2-3 section telescopic arms, tunnel arms, standard/rock buckets, grabs, ripper, etc., which are sold well in more than 60 countries and regions.

The following are our advantages:

1. Covers an area of about 18000 square meters
2. Staff size 120 people.
3. Technical equipment (2 sets of plasma, CNC cutting machines, 3 milling machines, a set of precision floor boring machines, One set of chamfering and beveling machines, two large lathes/drilling machines, a large shot blasting workshop, a stress relief workshop, a large plate rolling machine, and a high -purity mixed gas supply station, etc.)
4. Our company offers customers a comprehensive production line of custom-designed, custom-made, and delivered products.
5. Prompt lead time: 7-25 days
6. Annual production amount 600 sets of excavator booms We adhere to "Merit Quality, Sincerity Management and Customer Satisfaction", honestly greet customers from home and abroad to negotiate and cooperate with us.

CE certification & Utility model patent certificates



Our products have been exported to over 60 countries, utilizing various transportation methods such as sea, land, and air freight. For packaging, we use either wooden crates or stretch film to secure the products. Before shipment, the goods are carefully packaged and then loaded into containers to ensure their safety during transit.

Packaging & Shipping



FAQ(Some frequently asked questions):

Q: Are you a manufacturer?

A: Zhonghe machinery offered a wide range of attachment parts for excavators and dozers. Such as long reach arm, demolition arm, telescopic arm, standard bucket, rock bucket, cleaning bucket, tilting bucket, etc. We know that the perfect combination of high-quality cast steel products and a moderate price is the key to the success.

Q: What material is the excavator demolition boom made of?

A: Shaogang Q355B, Shaogang's material has the advantages of good toughness, high welding performance, and not easy to crack. Q355B has good welding performance and can be processed at room temperature. The standard arm material of the host manufacturer is also Q355B, which is easier to purchase on the market and the subsequent maintenance cost is also simple. If the customer's working conditions are bad, we will also use Q690 material, the long arm will be made lighter and more efficient

Q: Why choose Zhonghe over other companies?

A: We offer a highly skilled production and design team that delivers high-quality, customized solutions tailored to each customer's needs. Our commitment to precision and customer service has earned us a strong reputation in China, with annual sales consistently ranking among the top in the industry.

Q: What are your terms of payment?

A: We prefer T/T (50/50) payment terms, and for trial orders, we recommend using **Ali Credit Insurance** for added security.

Any information, pls contact Ada!!!!

Whatsapp: +86 15322105263

Wechat/Tel: 0086 15322105263

E-mail: abby@excavatorboomarm.com



Jiangmen Kaiping Zhonghe Machinery Manufacturing Co., Ltd



+86 13822325403



aria@excavatorboomarm.com



excavatorlongarm.com

9 Huancui West Road, Cuishanhu New Area, Kaiping City, Guangdong Province, China